

2727 S. BEECH DALY ROAD  
DEARBORN HEIGHTS, MICHIGAN

INDUSTRIAL FOR SALE OR LEASE  
144,000 Square Feet Available



**SIGNATURE  
ASSOCIATES**  
KNOW SIGNATURE | KNOW RESULTS

**THE ARMORED GROUP**



## PROPERTY FEATURES

- Two buildings totaling 144,000 sq. ft. available
- 4,000 sq. ft. of office in main building (124,000 sq. ft.)
- Zoned heavy industrial
- (18) 12x14, 10x24 grade level doors, (9) truckwells
- (2) 10-ton cranes have been removed from building and are located behind building
- Great for manufacturing with heavy power, buss duct, and air drops
- Power is primary, 6,000 amps at 240 volts available – power panels throughout shop
- Sprinkler system throughout except office area
- Two paint booths and security system
- Survey and environmental reports available
- Lease Rate: \$5.95/sq. ft. NNN
- Asking Price: \$6,900,000 (\$47.92/sq. ft)



For more information, please contact:

**JACK TOWNSEND**  
(248) 948 0115  
jtowndsend@signatureassociates.com

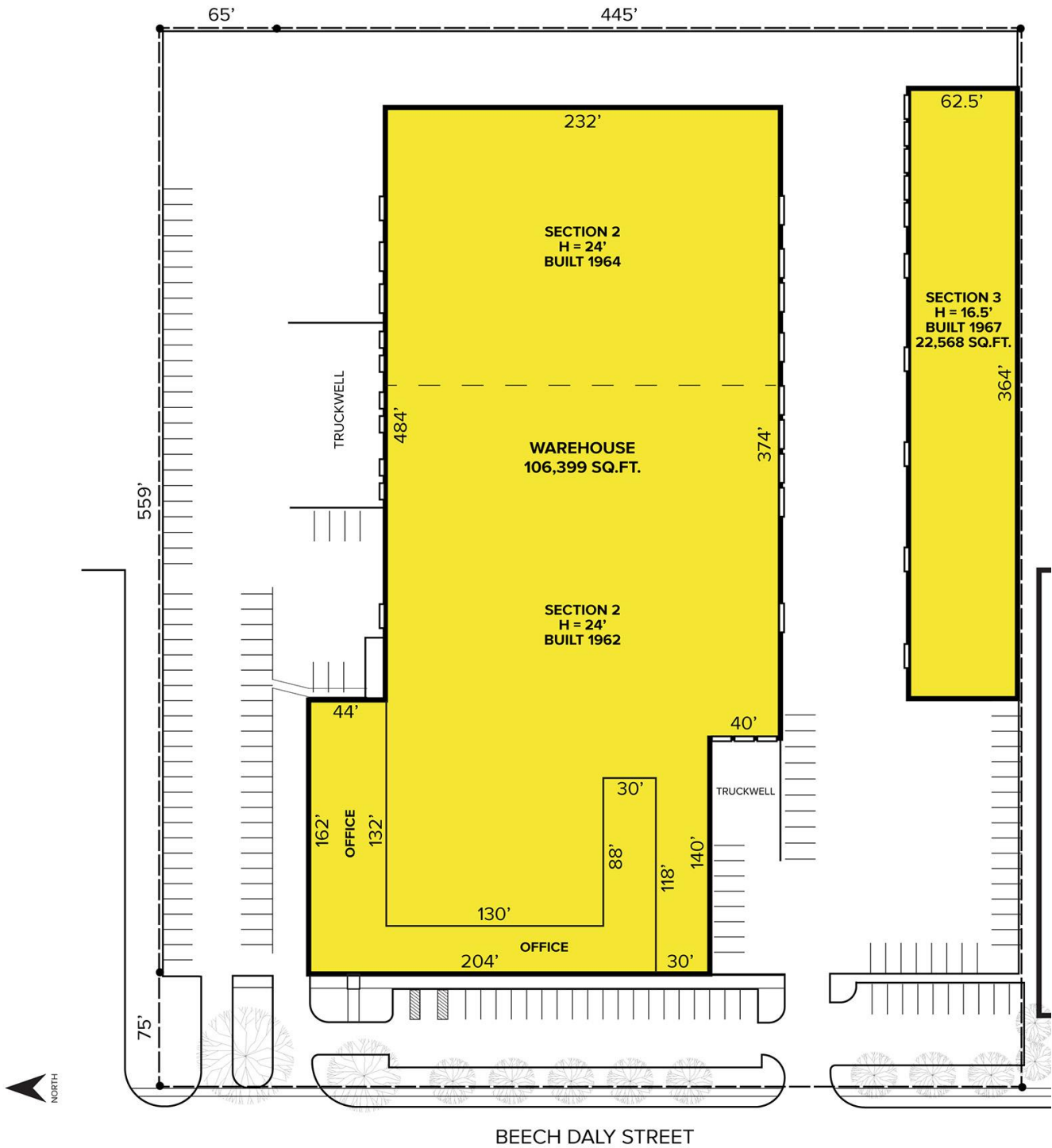
**SIGNATURE ASSOCIATES**  
One Towne Square, Suite 1200  
Southfield, MI 48076  
www.signatureassociates.com

# 2727 S. Beech Daly Rd. – Dearborn Heights, Michigan

Industrial For Sale or Lease

144,000  
Square Feet  
AVAILABLE

## Site Plan



For more information, please contact:

**JACK TOWNSEND**  
(248) 948 0115  
jtownsend@signatureassociates.com

**SIGNATURE ASSOCIATES**  
One Towne Square, Suite 1200  
Southfield, MI 48076  
www.signatureassociates.com

# 2727 S. Beech Daly Rd. – Dearborn Heights, Michigan

Industrial For Sale or Lease

144,000  
Square Feet  
AVAILABLE

Aerial



For more information, please contact:  
**JACK TOWNSEND**  
(248) 948 0115  
jtowndsend@signatureassociates.com

**SIGNATURE ASSOCIATES**  
One Towne Square, Suite 1200  
Southfield, MI 48076  
www.signatureassociates.com

Information is subject to verification and no liability for errors or omissions is assumed. Price is subject to change and listing withdrawal.