

FOR LEASE

# 519 Flushing Avenue

519 Flushing Avenue, Brooklyn, NY 11205



## Property Description

Prime Williamsburg Location

Lots of food in the area: Mozzarella Kosher Restaurant, Sprinkles Ice cream, W Fresh supermarket, Lee Gardens Supermarket, G'shmak Bakery and more

Next to Lee Gardens Shul

Chase Bank around the corner

## Property Highlights

- 1600 SF
- Several offices/rooms with different sizes
- Big Windows
- Center of new Williamsburg

## Offering Summary

Lease Rate:	Negotiable
Available SF:	1,600 SF
Building Size:	1,600 SF

Demographics	0.25 Miles	0.5 Miles	1 Mile
Total Households	4,517	14,745	73,844
Total Population	18,964	55,658	194,529
Average HH Income	\$58,609	\$61,226	\$79,048

## Yossi Zicherman

646.461.4000

yossi@workplacerealty.com

FOR LEASE

# 519 Flushing Avenue

519 Flushing Avenue, Brooklyn, NY 11205



**Yossi Zicherman**

646.461.4000

yossi@workplacerealty.com

Workplace Realty

| 88 Union Ave, Brooklyn, NY 11206

| 646.461.4000

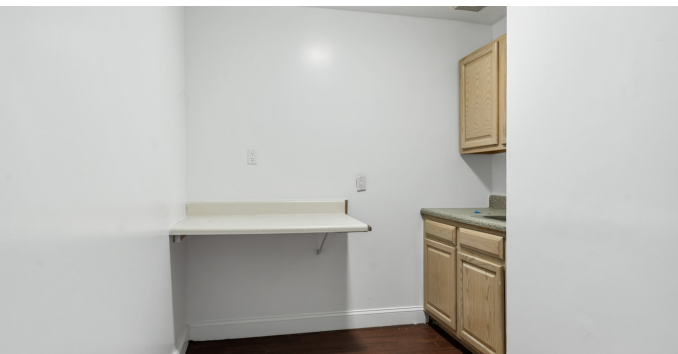
| workplacerealty.com



FOR LEASE

# 519 Flushing Avenue

519 Flushing Avenue, Brooklyn, NY 11205



**Yossi Zicherman**

646.461.4000

yossi@workplacerealty.com

Workplace Realty

| 88 Union Ave, Brooklyn, NY 11206

| 646.461.4000

| workplacerealty.com



FOR LEASE

# 519 Flushing Avenue

519 Flushing Avenue, Brooklyn, NY 11205



Population	0.25 Miles	0.5 Miles	1 Mile
Total Population	18,964	55,658	194,529
Average Age	18.8	20.6	28.9
Average Age (Male)	18.6	19.4	26.9
Average Age (Female)	19.5	21.8	30.9

Households & Income	0.25 Miles	0.5 Miles	1 Mile
Total Households	4,517	14,745	73,844
# of Persons per HH	4.2	3.8	2.6
Average HH Income	\$58,609	\$61,226	\$79,048
Average House Value	\$270,325	\$424,865	\$492,584

\* Demographic data derived from 2020 ACS - US Census



Map data ©2023 Google

**Yossi Zicherman**

646.461.4000

yossi@workplacerealty.com