



3284 Deseret Drive  
St. George, UT 84790

**NAIExcel**

COMMERCIAL REAL ESTATE SERVICES, WORLDWIDE

Offered By: **Curren Christensen**

243 E. St. George Blvd. Suite 200  
St George, Utah 84770  
(435) 628.1609 | [naixel.com](http://naixel.com)

office: 435.628.1609  
direct: 435.627.5752  
email: [curren@naixel.com](mailto:curren@naixel.com)

**Kayla Callahan**

direct: 435.632.3475  
email: [kayla@sprental.com](mailto:kayla@sprental.com)



# Property Summary

ADDRESS **3284 Deseret Drive  
St. George, UT 84790**

LEASE SIZE | SQFT **1,500±**

LOT SIZE | ACRES **2.80±**

ZONING **M-2**

- Clear height ranges from 16'4" to 17'7"
- Overhead doors are 10'x14'
- Convenient location in Millcreek Industrial Park
- 3-Phase power available
- NNN fees \$.18/SF/Month

## OFFERING TERMS

LEASE PRICE

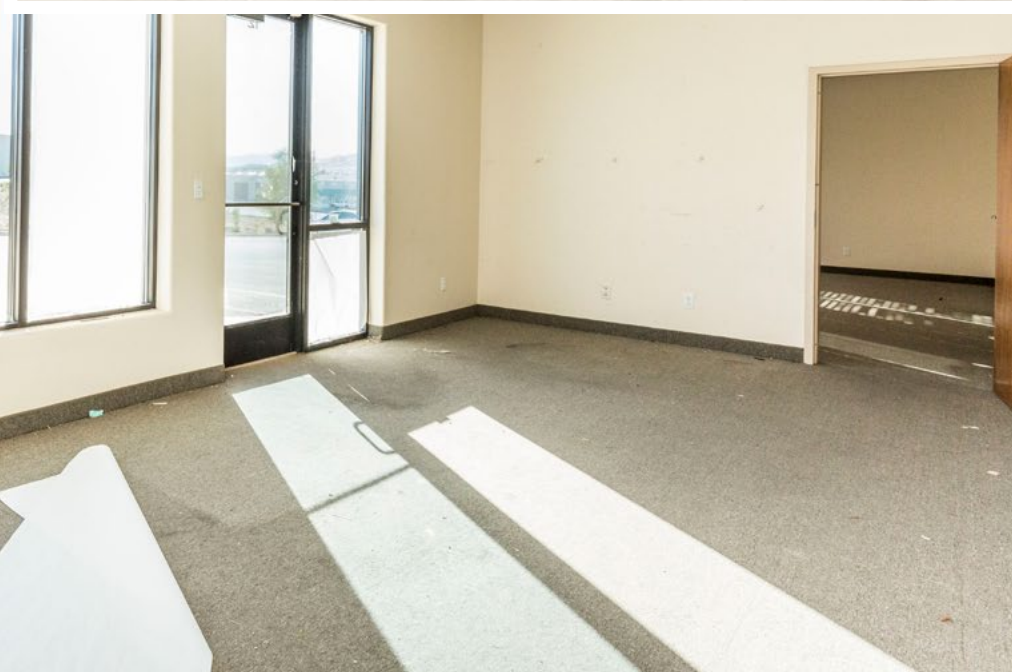
**\$.85/MO/NNN**

> FOR MORE INFORMATION  
<http://helloarti.com/view/26335>











FOR LEASE | INDUSTRIAL



### Population/Economy

- Washington County — 155,602
- St. George — 76,817
- Median Income of \$49,498
- Cost of Living Index of 102
- Unemployment Rate of 3.6%
- Median house value of \$234,800

### Days of Sunshine

- St. George — 300 days a year
- United States — 205 days a year

### Sporting Events

- 42 major sports events bring approx. 62,000 participants & 116,000 out of town visitors — bringing approx. \$78 million to the economy (The Spectrum)
- Ironman 70.3 St. George — 2,500 triathletes
- St. George Marathon — 7,800 runners
- Huntsman Senior Games — 11,000 competitors
- NJCAA Softball Championship tournament — 16 teams from around the nation

VIEW MARKET STATISTICS FOR OFFICE, RETAIL, INDUSTRIAL & MULTIFAMILY AT <https://excelcres.com/market-research/>

### Distance to Major Cities

	FROM ST. GEORGE
Salt Lake City, Utah	303 MILES
Las Vegas, Nevada	123 MILES
Los Angeles, California	387 MILES
San Diego, California	449 MILES
Denver, Colorado	631 MILES
Phoenix, Arizona	417 MILES

### Regional Parks Visitation

	2016	2011	2007	Distance
Zion National Park	4,317,028	2,847,403	2,679,181	46.5 MILES
Bryce Canyon National Park	2,365,110	1,285,492	1,012,563	141 MILES
Canyonlands National Park	776,218	435,908	417,560	347 MILES
Capitol Reef National Park	1,064,904	662,661	554,907	209 MILES
Arches National Park	1,585,718	1,014,405	860,181	335 MILES
Grand Canyon National Park	1,064,904	662,661	554,907	146 MILES



COMMERCIAL REAL ESTATE SERVICES, WORLDWIDE

243 E. St. George Blvd. Suite 200  
 St George, Utah 84770  
 (435) 628.1609 | [naixel.com](http://naixel.com)

Offered By: **Curren Christensen**

office: 435.628.1609  
 direct: 435.627.5752  
 email: [currenc@naixel.com](mailto:currenc@naixel.com)

**Kayla Callahan**

direct: 435.632.3475  
 email: [kayla@sprental.com](mailto:kayla@sprental.com)

