



Ladera Shopping Center 3301 Coors Blvd NW Albuquerque, NM 87120

\$12 Inline
\$8 Anchor
NNN



- 1 mile north of I-40
- Join Planet Fitness, Burger King, Bank of ABQ, Dollar Tree, and more.
- C-1 Zoning
- 5.5/1000 Parking
- Spaces from 1,280 SF to 43,900 SF
- May demise anchor suite to 5,000—20,000 SF



Cauwels & Stuve
8814 Horizon Blvd NE
Suite 400
Albuquerque, NM 87113
505.266.5711
www.cauwels-stuve.com

Contact

Barbara Haase or Jessica Tonjes

505.266.5711



Ladera Shopping Center

3301 Coors Blvd NW

Albuquerque, NM 87120

\$12 Inline

\$8 Anchor

NNN



Cauwels & Stuve

8814 Horizon Blvd NE

Suite 400

Albuquerque, NM 87113

505.266.5711

www.cauwels-stuve.com



Ladera Shopping Center
3301 Coors Blvd NW
Albuquerque, NM 87120

\$12 Inline

\$8 Anchor

NNN

Anchor Space: 43,000 SF. Can be demised to 20,000 SF

Suite 5: 1,600 SF

Suite 6: 1,280 SF



Cauwels & Stuve

8814 Horizon Blvd NE

Suite 400

Albuquerque, NM 87113

505.266.5711

www.cauwels-stuve.com

Contact: Barbara Haase or Jessica Tonjes



Ladera Shopping Center

3301 Coors Blvd NW

Albuquerque, NM 87120

\$12 Inline

\$8 Anchor

NNN

Cauwels & Stuve

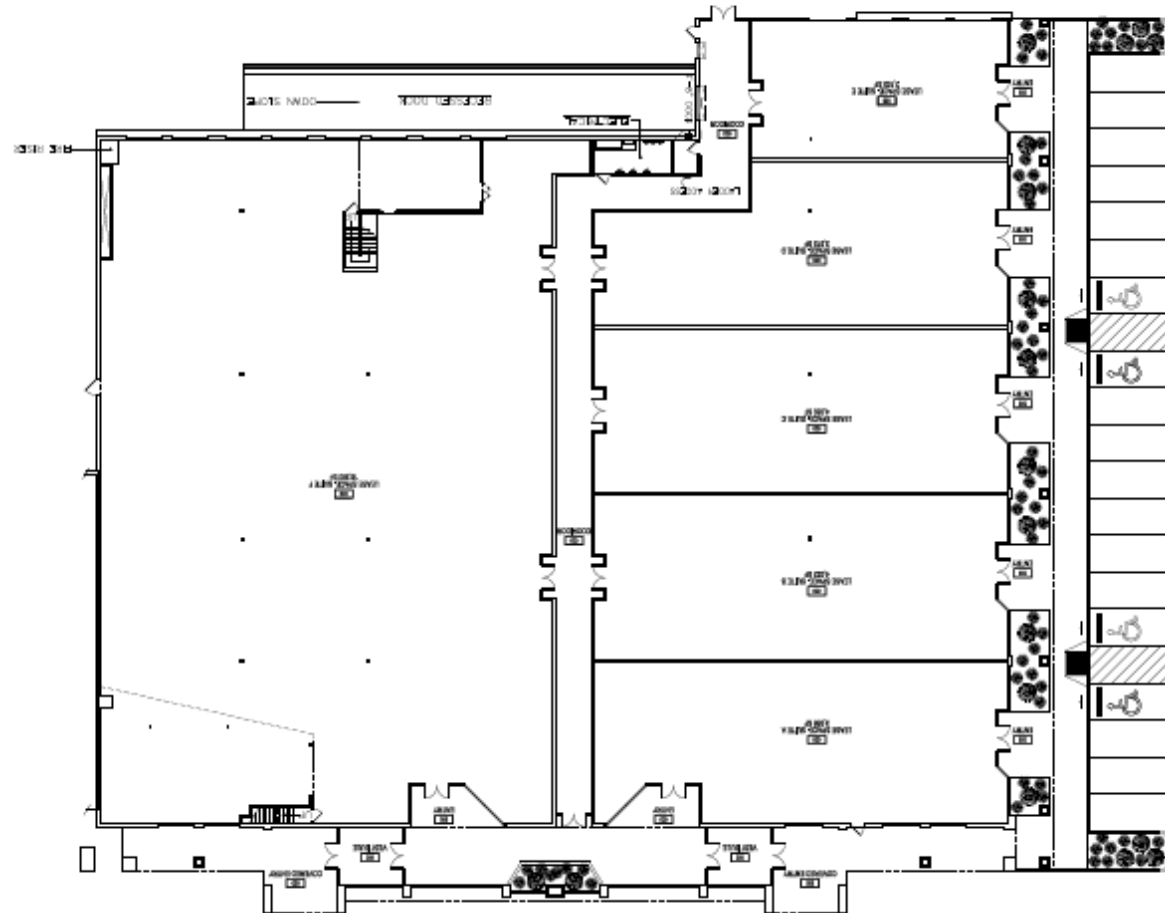
8814 Horizon Blvd NE

Suite 400

Albuquerque, NM 87113

505.266.5711

www.cauwels-stuve.com



**Demising plan to deliver in line space of 2,100 SF—5,500 SF
or 20,000 SF junior anchor**