

LEASE

PARTIAL
BUILDING

OFFICE
SHOP

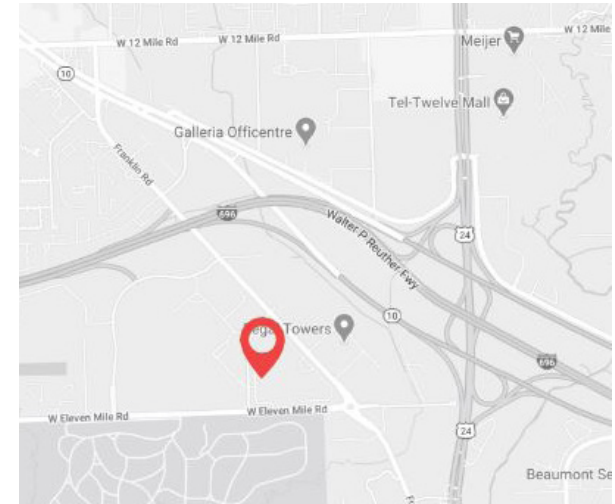
25,956 SF
AVAILABLE


TRANSWESTERN

REAL ESTATE
SERVICES

SOUTHFIELD CROSSING I

25650 W Eleven Mile Road, Southfield, MI 48034
Suite #300



Availability:

- Suite 300
- Approximately 24,000 square feet
- Shop area with overhead door access
- 1 overhead door
- Recently renovated
- Immediate occupancy
- 5000 square feet warehouse
- Extensive glass offices thru out
- Premium kitchen & lounge

\$11.50/SF

NNN CHARGES ARE ESTIMATED AT \$4.85/SF

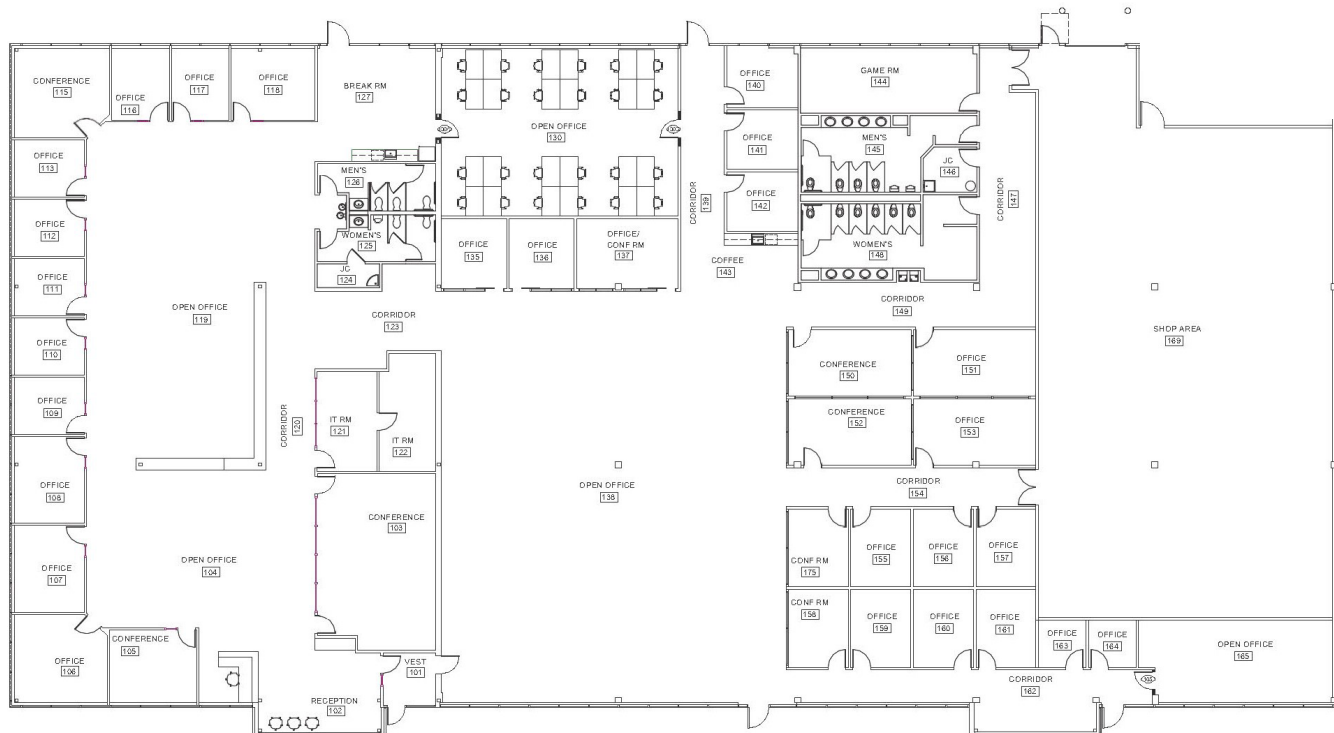
Leasing Information:

Chuck Howard
248.821.7722
charles.howard@transwestern.com

Bill Harvey
248.797.9455
bill.harvey@transwestern.com

SOUTHFIELD CROSSING I

25650 W Eleven Mile Road, Southfield, MI 48034
Suite #300



SUITE 300 - APPROX 24,000 SF