

TOK

COMMERCIAL



663 W CANFIELD

OFFICE SPACE FOR LEASE | COEUR D'ALENE, ID 83815

CONTACT

DANNY DAVIS, CCIM

208.691.6003

danny@tokcommercial.com

HIGHLIGHTS

- Quality stand alone building
- Excellent curb appeal
- Central location and easily accessible
- Ample parking

DETAILS

SPACE	SIZE	RATE
Suite B	2,400 SF	\$18.00/SF, NNN
LOT SIZE:	.64 Acres	LEASE TYPE: NNN
BLDG SIZE:	5,390 SF	EST. NNN: \$5.27/SF
YEAR BUILT:	2006	AVAILABLE: Immediately
PARKING:	Ample	BASE RENT: ± \$3,600/Mo
ZONING:	C-17	NNN EXPENSES: ± \$1,204/Mo

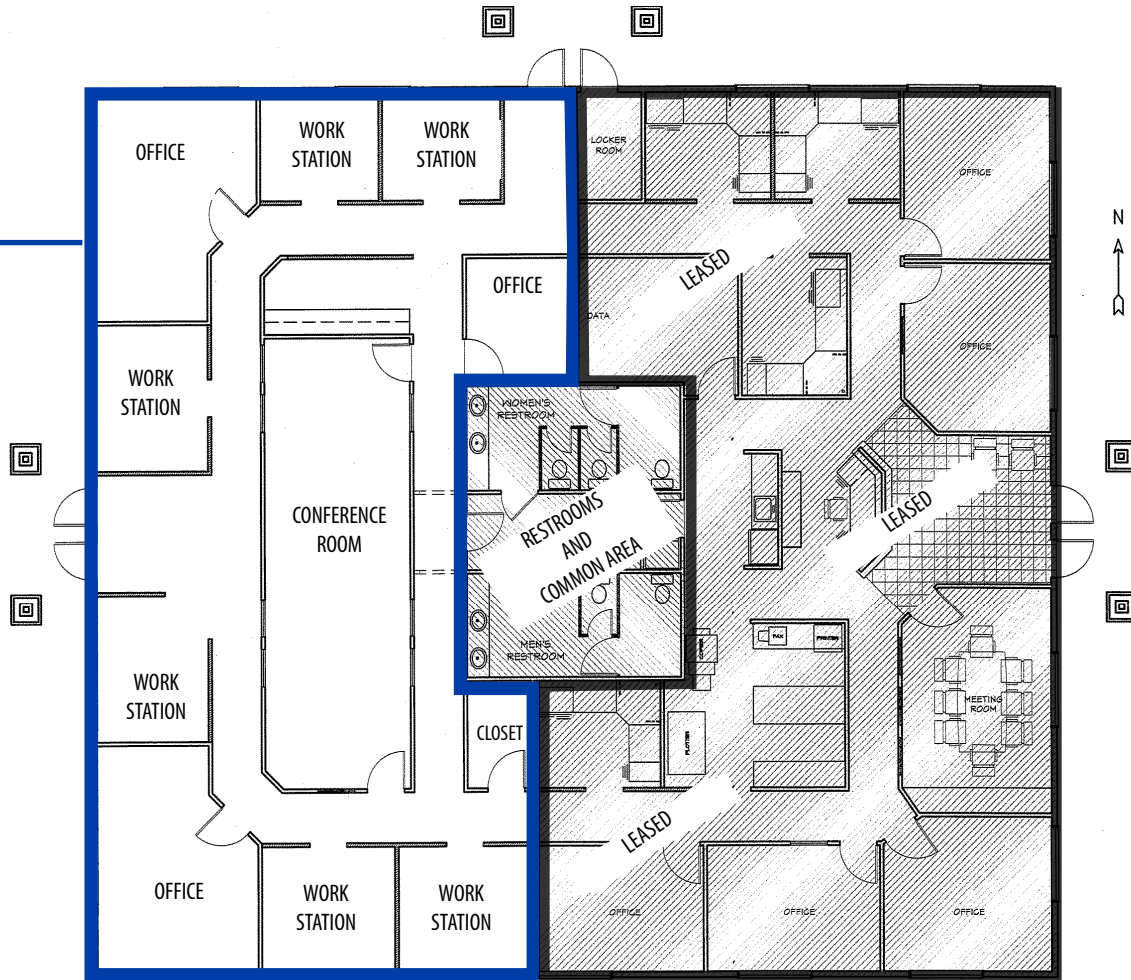


THIS PROPERTY IS EXCLUSIVELY MARKETED BY TOK INLAND NORTHWEST LLC DBA TOK COMMERCIAL. This information was obtained from sources believed reliable but cannot be guaranteed. Any opinions or estimates are used for example only.

TOKCOMMERCIAL.COM

FLOOR PLAN

AVAILABLE
± 2,400 SF



PHASE 2 PROPOSED
T.I. FLOOR PLAN
2470 SQ. FT.

EXISTING
T.I. FLOOR PLAN
2950 SQ. FT.

W CANFIELD AVE







DOWNTOWN CDA



SILVERLAKE MALL



33,403 VPD



W CANFIELD AVE

SITE

W CANFIELD AVE

Tok
COMMERCIAL

THIS PROPERTY IS EXCLUSIVELY MARKETED BY TOK INLAND NORTHWEST LLC DBA TOK COMMERCIAL. This information was obtained from sources believed reliable but cannot be guaranteed. Any opinions or estimates are used for example only.



35,189 VPD



SITE

N MINERAL DR

TOK
COMMERCIAL

AERIAL MAP SURROUNDED BY AMENITIES

