

Likewise



# For Lease



**EXCELLENT BAR/RETAIL  
SPACE IN DOWNTOWN AVL**

**81 Coxe Avenue, Asheville, NC 28801**

**Likewise**  
COMMERCIAL REAL ESTATE

**Stacy Wheeler** LISTING BROKER

423.504.8167 | [stacy@likewisecommercial.com](mailto:stacy@likewisecommercial.com) | [likewisecommercial.com](http://likewisecommercial.com)



## OFFERING SUMMARY

LEASE PRICE \$26/SF NNN

---

BUILDING SIZE ± 2,906 SF

---

ZONING CBD

## PROPERTY FEATURES

- Highly visible in prime location **in the heart of downtown Asheville**, adjacent to a busy, signalized intersection
- Steps from Asheville Yards music venue and vibrant South Slope
- **Modern amenities**, including radiant floor heating
- **Newly constructed rooftop bar**, spacious patio and additional restrooms
- **Walkable** to established Asheville shops and restaurants like Wicked Weed Funkatorium, Chai Pani, and Bear's BBQ
- MLS# 4318180



81 Coxe Avenue, Asheville, NC 28801



**Likewise**  
COMMERCIAL REAL ESTATE

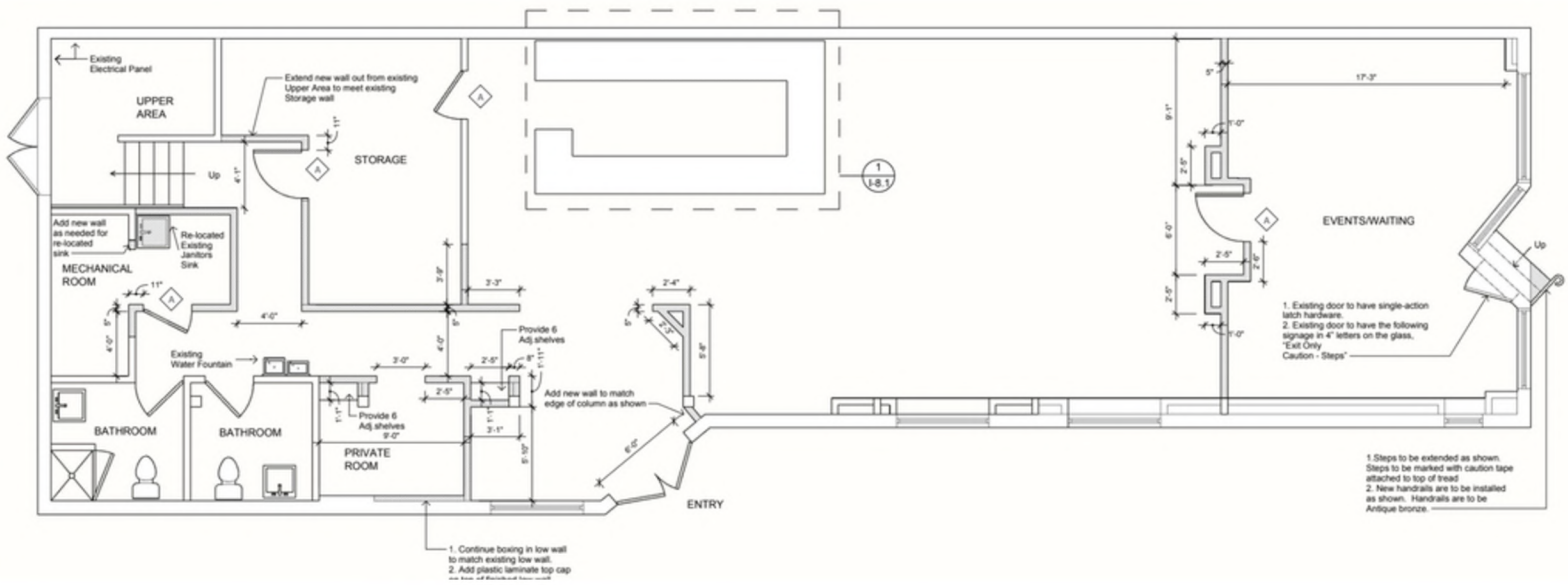
**Stacy Wheeler** LISTING BROKER

423.504.8167 | [stacy@likewisecommercial.com](mailto:stacy@likewisecommercial.com) | [likewisecommercial.com](http://likewisecommercial.com)

We obtained the information above from sources we believe to be reliable. However, we have not verified its accuracy and make no guarantee, warranty or representation about it. It is submitted subject to the possibility of errors, omissions, change of price, rental or other conditions, prior sale, lease or financing, or withdrawal without notice. We include projections, opinions, assumptions or estimates for example only, and they may not represent current or future performance of the property. You and your tax and legal advisors should conduct your own investigation of the property and transaction.



± 2,906 SF

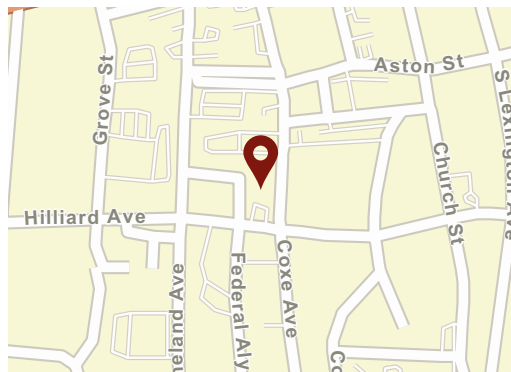
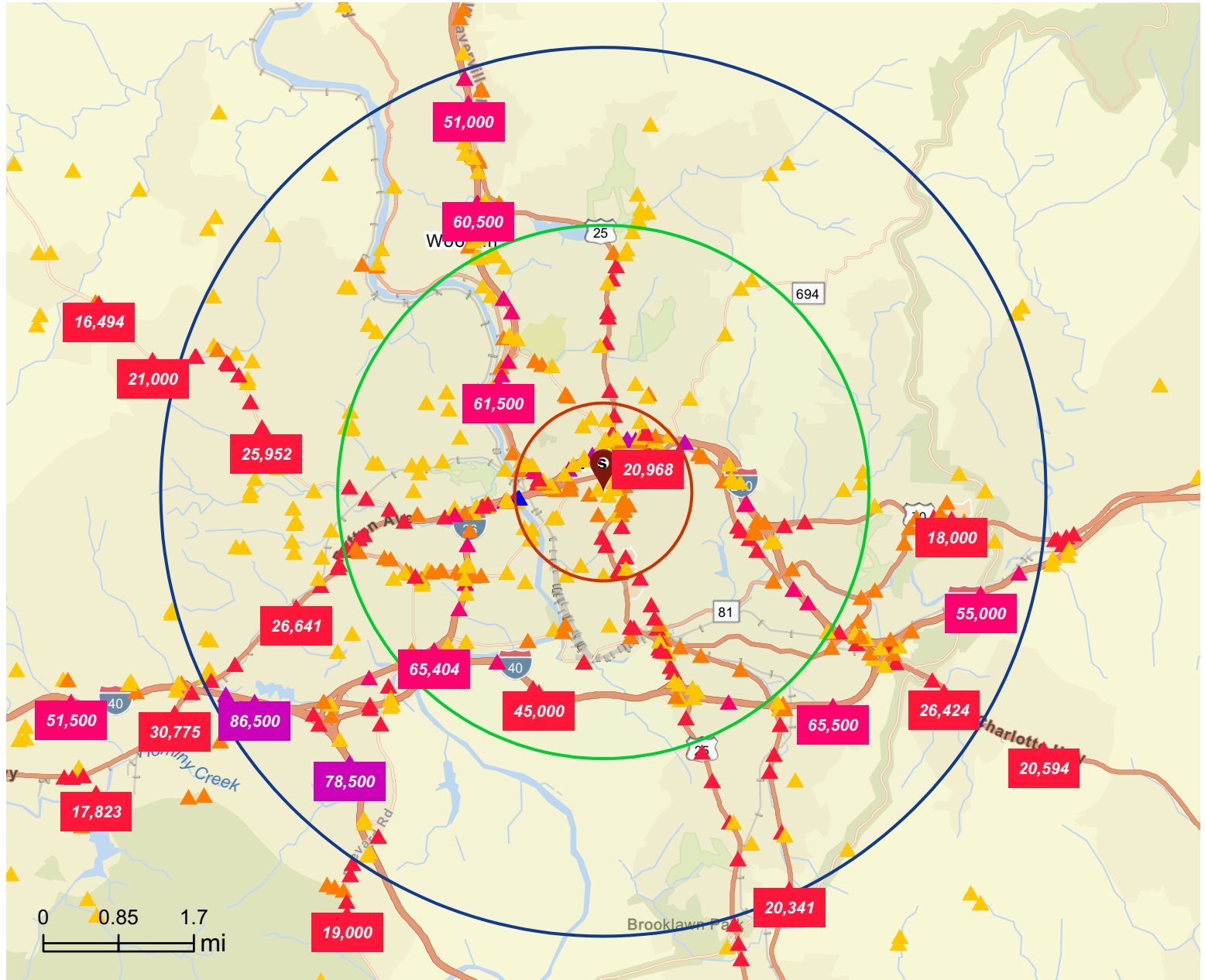


\*Tenant to Verify Square Footage

# Traffic Count Map

81 Coxe Ave, Asheville, North Carolina, 28801

Rings: 1, 3, 5 mile radii



## Average Daily Traffic Volume

- ▲ Up to 8,000 vehicles per day
- ▲ 8,001 - 15,000
- ▲ 15,001 - 50,000
- ▲ 50,001 - 70,000
- ▲ 70,001 - 100,000
- ▲ More than 100,000 per day

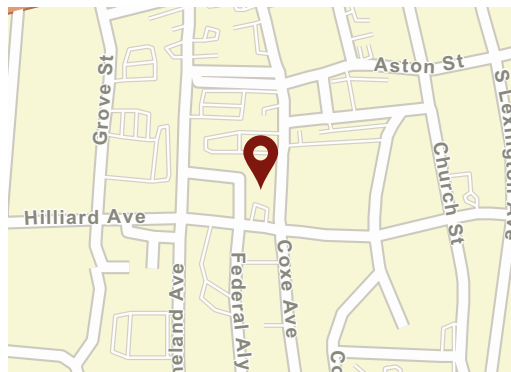
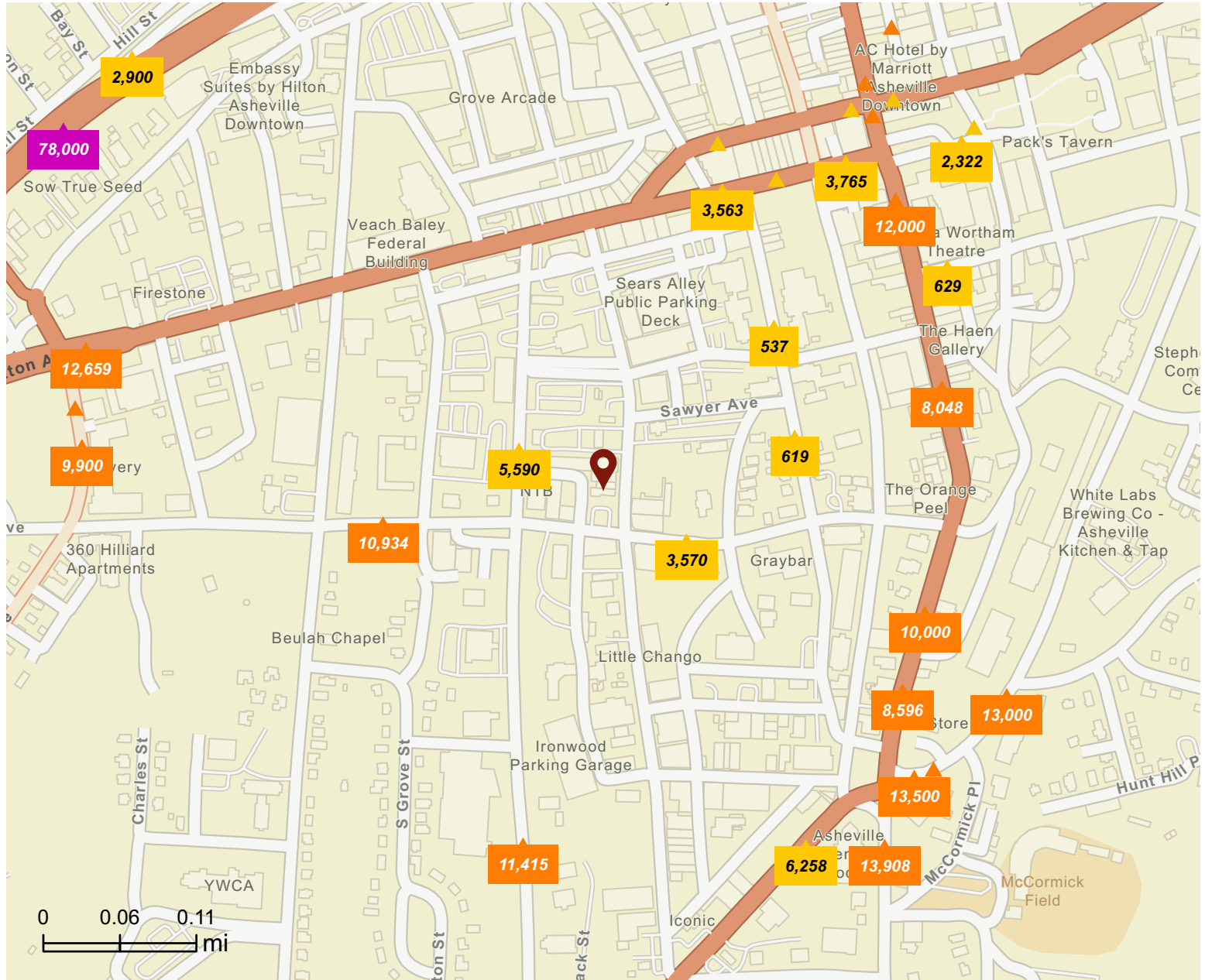


Source: Traffic Counts (2025)

# Traffic Count Map - Close Up

81 Coxe Ave, Asheville, North Carolina, 28801

Rings: 1, 3, 5 mile radii



## Average Daily Traffic Volume

- ▲ Up to 8,000 vehicles per day
- ▲ 8,001 - 15,000
- ▲ 15,001 - 50,000
- ▲ 50,001 - 70,000
- ▲ 70,001 - 100,000
- ▲ More than 100,000 per day



Source: Traffic Counts (2025)

81 Coxe Ave, Asheville, North Carolina, 28801  
Ring: 1 mile radius

## Emerging Hub (D1)

Dominant Tapestry Segment

### KEY FACTS



9,505

Total Population



\$553,859

Median Home Value



2,385

Businesses



29,301

Daytime Population



40.8

Median Age



2.1%

2025-2030  
Pop Growth  
Rate



\$43,152

Per Capita  
Income



1.8

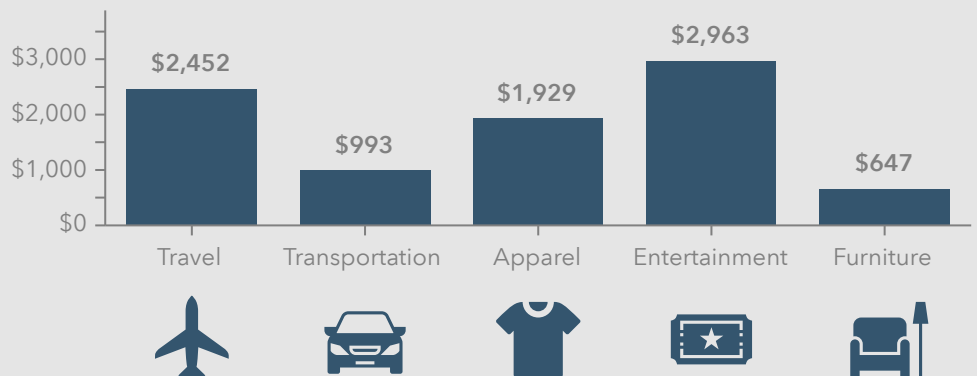
Avg Household  
Size



\$52,720

Median Household  
Income

### KEY SPENDING FACTS



Source: This infographic contains data provided by Esri (2025, 2030), Esri-Data Axle (2025), Esri-U.S. BLS (2025).

© 2026 Esri

Spending facts are average annual dollars per household

# Business Summary Report (NAICS)

81 Coxe Ave, Asheville, North Carolina, 28801



Rings: 1, 3, 5 mile radii

Data for all businesses in area	1 mile	3 miles	5 miles
Total Businesses	2,385	5,430	7,381
Total Employees	24,322	63,097	84,570
Total Population	9,505	57,295	106,988
Employee/Population Ratio (per 100)	255.9	110.1	79.0

by NAICS Codes	Businesses		Employees		Businesses		Employees		Businesses		Employees	
	Number	%	Number	%	Number	%	Number	%	Number	%	Number	%
Agriculture, Forestry, Fishing & Hunting (11)	10	0.4%	42	0.2%	22	0.4%	72	0.1%	31	0.4%	91	0.1%
Mining (21)	0	0.0%	0	0.0%	1	0.0%	20	0.0%	4	0.1%	36	0.0%
Utilities (22)	2	0.1%	53	0.2%	3	0.1%	94	0.1%	5	0.1%	217	0.3%
Construction (23)	63	2.6%	329	1.4%	203	3.7%	1,603	2.5%	351	4.8%	3,583	4.2%
Building Construction	31	1.3%	166	0.7%	91	1.7%	697	1.1%	147	2.0%	1,496	1.8%
Heavy/Civil Eng Construction	5	0.2%	21	0.1%	15	0.3%	126	0.2%	30	0.4%	319	0.4%
Specialty Trade Contractor	27	1.1%	141	0.6%	98	1.8%	780	1.2%	174	2.4%	1,768	2.1%
Manufacturing (31-33)	52	2.2%	497	2.0%	152	2.8%	1,880	3.0%	219	3.0%	3,248	3.8%
Wholesale Trade (42)	24	1.0%	232	0.9%	101	1.9%	853	1.4%	147	2.0%	1,538	1.8%
Durable Goods	15	0.6%	191	0.8%	68	1.3%	613	1.0%	100	1.4%	863	1.0%
Nondurable Goods	8	0.3%	40	0.2%	30	0.6%	232	0.4%	43	0.6%	662	0.8%
Trade Broker	1	0.0%	2	0.0%	3	0.1%	7	0.0%	5	0.1%	12	0.0%



**Source:** This infographic contains data provided by Esri-Data Axle (2025), Esri (2025). Data note: Not all NAICS subcategories for a 2 digit major category are being shown.

# Business Summary Report (NAICS)

81 Coxe Ave, Asheville, North Carolina, 28801



Rings: 1, 3, 5 mile radii

by NAICS Codes	1 mile				3 miles				5 miles			
	Businesses		Employees		Businesses		Employees		Businesses		Employees	
	Number	%	Number	%	Number	%	Number	%	Number	%	Number	%
Retail Trade (44-45)	200	8.4%	1,564	6.4%	633	11.7%	7,055	11.2%	912	12.4%	10,100	11.9%
Motor Vehicle & Parts Dealers	5	0.2%	29	0.1%	35	0.6%	332	0.5%	70	0.9%	702	0.8%
Furniture & Home Furnishing Stores	9	0.4%	81	0.3%	36	0.7%	313	0.5%	57	0.8%	481	0.6%
Electronics & Appliance Stores	5	0.2%	35	0.1%	17	0.3%	123	0.2%	24	0.3%	142	0.2%
Building & Garden Equipment	5	0.2%	165	0.7%	32	0.6%	626	1.0%	52	0.7%	1,016	1.2%
Food & Beverage Stores	35	1.5%	508	2.1%	96	1.8%	1,450	2.3%	139	1.9%	2,240	2.6%
Health & Personal Care Stores	10	0.4%	41	0.2%	64	1.2%	538	0.8%	89	1.2%	823	1.0%
Gasoline Stations	2	0.1%	7	0.0%	18	0.3%	77	0.1%	32	0.4%	137	0.2%
Clothing, Shoe and Jewellery Stores	49	2.0%	298	1.2%	119	2.2%	1,125	1.8%	144	1.9%	1,272	1.5%
Sporting Goods, Hobby & Music Stores	72	3.0%	379	1.6%	167	3.1%	990	1.6%	226	3.1%	1,285	1.5%
General Merchandise Stores	8	0.3%	20	0.1%	49	0.9%	1,481	2.4%	80	1.1%	2,001	2.4%
Transportation & Warehousing (48-49)	18	0.8%	252	1.0%	56	1.0%	675	1.1%	93	1.3%	943	1.1%
Truck Transportation	4	0.2%	60	0.3%	16	0.3%	143	0.2%	27	0.4%	264	0.3%
Information (51)	57	2.4%	855	3.5%	116	2.1%	1,275	2.0%	154	2.1%	1,747	2.1%
Finance & Insurance (52)	131	5.5%	940	3.9%	240	4.4%	1,500	2.4%	325	4.4%	1,997	2.4%
Central Bank/Credit & Related Activities	42	1.8%	451	1.9%	81	1.5%	736	1.2%	111	1.5%	1,000	1.2%
Securities & Commodity Contracts	66	2.8%	351	1.4%	101	1.9%	469	0.7%	123	1.7%	548	0.7%
Funds, Trusts & Other Financial	23	1.0%	139	0.6%	58	1.1%	295	0.5%	91	1.2%	449	0.5%
Real Estate, Rental & Leasing (53)	165	6.9%	1,481	6.1%	336	6.2%	2,925	4.6%	462	6.3%	3,534	4.2%
Professional, Scientific & Tech Services (54)	361	15.1%	2,209	9.1%	634	11.7%	3,771	6.0%	788	10.7%	4,672	5.5%
Legal Services	153	6.4%	853	3.5%	202	3.7%	1,050	1.7%	221	3.0%	1,106	1.3%



**Source:** This infographic contains data provided by Esri-Data Axle (2025), Esri (2025). Data note: Not all NAICS subcategories for a 2 digit major category are being shown.

# Business Summary Report (NAICS)

81 Coxe Ave, Asheville, North Carolina, 28801



Rings: 1, 3, 5 mile radii

by NAICS Codes	1 mile				3 miles				5 miles			
	Businesses		Employees		Businesses		Employees		Businesses		Employees	
	Number	%	Number	%	Number	%	Number	%	Number	%	Number	%
Management of Companies (55)	13	0.6%	84	0.3%	21	0.4%	114	0.2%	28	0.4%	136	0.2%
Administrative, Support & Waste Mgmt (56)	63	2.6%	653	2.7%	163	3.0%	1,268	2.0%	242	3.3%	1,801	2.1%
Educational Services (61)	47	2.0%	869	3.6%	122	2.3%	2,416	3.8%	179	2.4%	3,631	4.3%
Health Care & Social Assistance (62)	333	14.0%	4,073	16.8%	736	13.6%	17,178	27.2%	938	12.7%	21,780	25.8%
Ambulatory Health Care	216	9.1%	2,443	10.0%	495	9.1%	7,209	11.4%	643	8.7%	9,922	11.7%
Hospital	22	0.9%	774	3.2%	46	0.8%	7,395	11.7%	58	0.8%	8,082	9.6%
Nursing/Residential Care	4	0.2%	39	0.2%	25	0.5%	521	0.8%	36	0.5%	963	1.1%
Social Assistance	90	3.8%	817	3.4%	171	3.1%	2,053	3.3%	201	2.7%	2,813	3.3%
Arts, Entertainment & Recreation (71)	56	2.4%	521	2.1%	156	2.9%	2,155	3.4%	201	2.7%	3,292	3.9%
Accommodation & Food Services (72)	238	10.0%	3,597	14.8%	539	9.9%	9,500	15.1%	686	9.3%	11,791	13.9%
Accommodation	35	1.5%	876	3.6%	98	1.8%	2,704	4.3%	127	1.7%	3,061	3.6%
Food & Drinking Places	203	8.5%	2,720	11.2%	440	8.1%	6,796	10.8%	559	7.6%	8,730	10.3%
Other Services Except Public Admin (81)	288	12.1%	1,527	6.3%	703	12.9%	3,449	5.5%	979	13.3%	4,663	5.5%
Repair & Maintenance	21	0.9%	82	0.3%	84	1.6%	394	0.6%	150	2.0%	672	0.8%
Auto Repair & Maintenance	13	0.6%	64	0.3%	59	1.1%	294	0.5%	106	1.4%	491	0.6%
Personal & Laundry Service	96	4.0%	444	1.8%	255	4.7%	1,098	1.7%	346	4.7%	1,481	1.8%
Civic and Other Orgs	171	7.2%	1,001	4.1%	364	6.7%	1,957	3.1%	483	6.5%	2,510	3.0%
Public Administration (92)	116	4.9%	4,520	18.6%	155	2.9%	5,256	8.3%	184	2.5%	5,719	6.8%
Unclassified Establishments (99)	149	6.3%	23	0.1%	338	6.2%	37	0.1%	453	6.1%	51	0.1%
<b>Total (11-99)</b>	<b>2,385</b>	<b>100.0%</b>	<b>24,322</b>	<b>100.0%</b>	<b>5,430</b>	<b>100.0%</b>	<b>63,097</b>	<b>100.0%</b>	<b>7,381</b>	<b>100.0%</b>	<b>84,570</b>	<b>100.0%</b>



**Source:** This infographic contains data provided by Esri-Data Axle (2025), Esri (2025). Data note: Not all NAICS subcategories for a 2 digit major category are being shown.

# Business Summary Report (SIC)

81 Coxe Ave, Asheville, North Carolina, 28801



Rings: 1, 3, 5 mile radii

Data for all businesses in area	1 mile	3 miles	5 miles
Total Businesses	2,385	5,430	7,381
Total Employees	24,322	63,097	84,570
Total Population	9,505	57,295	106,988
Employee/Population Ratio (per 100 )	255.9	110.1	79.0

by SIC Codes	Businesses		Employees		Businesses		Employees		Businesses		Employees	
	Number	%	Number	%	Number	%	Number	%	Number	%	Number	%
Agriculture & Mining (01-14)	21	0.9%	117	0.5%	78	1.4%	407	0.7%	151	2.0%	813	1.0%
Construction (15-17)	57	2.4%	296	1.2%	190	3.5%	1,456	2.3%	327	4.4%	3,364	4.0%
Manufacturing (20-39)	57	2.4%	861	3.5%	148	2.7%	2,160	3.4%	215	2.9%	3,562	4.2%
Transportation (40-47)	22	0.9%	269	1.1%	81	1.5%	750	1.2%	136	1.8%	1,190	1.4%
Communication (48)	14	0.6%	137	0.6%	39	0.7%	318	0.5%	56	0.8%	668	0.8%
Utility (49)	3	0.1%	56	0.2%	9	0.2%	202	0.3%	16	0.2%	512	0.6%
Wholesale Trade (50-51)	25	1.1%	236	1.0%	103	1.9%	860	1.4%	149	2.0%	1,545	1.8%
Retail Trade Summary (52-59)	410	17.2%	4,320	17.8%	1,095	20.2%	14,007	22.2%	1,505	20.4%	19,026	22.5%
Home Improvement	5	0.2%	165	0.7%	32	0.6%	626	1.0%	53	0.7%	1,019	1.2%
General Merchandise Stores	4	0.2%	12	0.1%	29	0.5%	1,429	2.3%	43	0.6%	1,765	2.1%
Food Stores	38	1.6%	561	2.3%	110	2.0%	1,624	2.6%	154	2.1%	2,432	2.9%
Auto Dealers & Gas Stations	7	0.3%	37	0.1%	52	1.0%	401	0.6%	99	1.3%	821	1.0%
Apparel & Accessory Stores	41	1.7%	275	1.1%	96	1.8%	961	1.5%	115	1.6%	1,090	1.3%
Furniture & Home Furnishings	17	0.7%	120	0.5%	62	1.1%	498	0.8%	97	1.3%	715	0.8%
Eating & Drinking Places	197	8.3%	2,665	11.0%	425	7.8%	6,606	10.5%	539	7.3%	8,499	10.1%
Miscellaneous Retail	101	4.2%	486	2.0%	290	5.3%	1,863	3.0%	406	5.5%	2,686	3.2%

**Source:** This infographic contains data provided by Esri-Data Axle (2025), Esri (2025).

# Business Summary Report (SIC)

81 Coxe Ave, Asheville, North Carolina, 28801



Rings: 1, 3, 5 mile radii

by SIC Codes	1 mile				3 miles				5 miles			
	Businesses		Employees		Businesses		Employees		Businesses		Employees	
	Number	%	Number	%	Number	%	Number	%	Number	%	Number	%
Finance, Insurance, Real Estate (60-67)	314	13.2%	2,682	11.0%	572	10.5%	4,513	7.2%	769	10.4%	5,609	6.6%
Banks, Savings & Lending	44	1.8%	458	1.9%	86	1.6%	717	1.1%	117	1.6%	1,002	1.2%
Securities Brokers	64	2.7%	341	1.4%	98	1.8%	458	0.7%	119	1.6%	532	0.6%
Insurance Carriers & Agents	23	1.0%	139	0.6%	58	1.1%	295	0.5%	90	1.2%	445	0.5%
Real Estate, Investment Offices	183	7.7%	1,744	7.2%	330	6.1%	3,043	4.8%	443	6.0%	3,629	4.3%
Services Summary (70-89)	1,199	50.3%	10,879	44.7%	2,623	48.3%	33,199	52.6%	3,419	46.3%	42,577	50.4%
Hotels & Lodging	35	1.5%	876	3.6%	98	1.8%	2,704	4.3%	127	1.7%	3,061	3.6%
Automotive Services	16	0.7%	86	0.3%	78	1.4%	367	0.6%	136	1.8%	594	0.7%
Movies & Amusements	59	2.5%	366	1.5%	164	3.0%	939	1.5%	218	3.0%	1,236	1.5%
Health Services	233	9.8%	3,210	13.2%	542	10.0%	15,006	23.8%	707	9.6%	18,419	21.8%
Legal Services	147	6.2%	830	3.4%	195	3.6%	1,024	1.6%	214	2.9%	1,080	1.3%
Education Inst. & Libraries	40	1.7%	924	3.8%	96	1.8%	2,443	3.9%	141	1.9%	3,618	4.3%
Other Services	669	28.1%	4,588	18.9%	1,449	26.7%	10,717	17.0%	1,876	25.4%	14,569	17.2%
Government (91-97)	113	4.7%	4,441	18.3%	152	2.8%	5,174	8.2%	182	2.5%	5,640	6.7%
Unclassified Establishments (99)	151	6.3%	29	0.1%	341	6.3%	51	0.1%	456	6.2%	65	0.1%
Totals (01-99)	2,385	100.0%	24,322	100.0%	5,430	100.0%	63,097	100.0%	7,381	100.0%	84,570	100.0%



**Source:** This infographic contains data provided by Esri-Data Axle (2025), Esri (2025).

# Key Facts

81 Coxe Ave, Asheville, North Carolina, 28801  
Ring: 1 mile radius

## KEY FACTS

9,505

Population



1.8

Average Household Size

40.8

Median Age

\$52,720

Median Household Income

## EDUCATION

9.1%

No High School Diploma



18.7%

High School Graduate



16.5%

Some College/  
Associate's Degree



55.7%

Bachelor's/Grad/  
Prof Degree

## BUSINESS



2,385

Total Businesses



24,322

Total Employees

## EMPLOYMENT



67.5%

White Collar



10.9%

Blue Collar



21.6%

Services



Unemployment Rate

## INCOME



\$52,720

Median Household Income



\$43,152

Per Capita Income



\$14,628

Median Net Worth

## 2025 Households by income (Esri)

The largest group: <\$15,000 (26.2%)

The smallest group: \$25,000 - \$34,999 (5.6%)

Indicator ▲	Value	Diff	
<\$15,000	26.2%	+17.8%	
\$15,000 - \$24,999	9.5%	+2.5%	
\$25,000 - \$34,999	5.6%	-1.0%	
\$35,000 - \$49,999	7.5%	-3.0%	
\$50,000 - \$74,999	13.2%	-3.7%	
\$75,000 - \$99,999	7.8%	-5.4%	
\$100,000 - \$149,999	13.1%	-2.7%	
\$150,000 - \$199,999	7.3%	-3.1%	
\$200,000+	9.9%	-1.3%	

Bars show deviation from Buncombe County

# Demographic and Income Profile

81 Coxe Ave, Asheville, North Carolina, 28801



Ring: 1 mile radius

Summary	Census 2020	2025	2030
Total Population	8,901	9,505	10,559
Total Households	4,611	4,952	5,545
Family Households	1,646	1,697	1,887
Average Household Size	1.76	1.76	1.77
Owner Occupied Housing Units	1,400	1,507	1,589
Renter Occupied Housing Units	3,211	3,445	3,956
Median Age	39.7	40.8	41.9

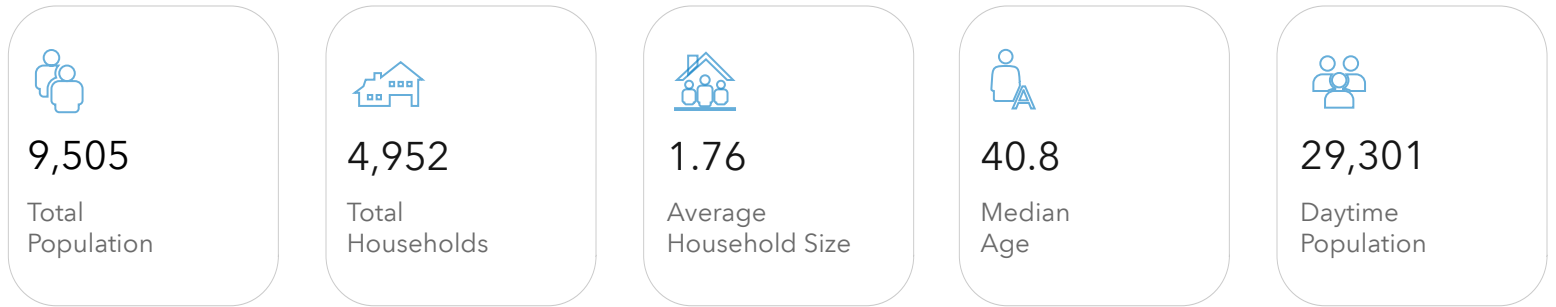
Trends 2025 - 2030	Area	State	National
Population	2.1%	0.8%	0.4%
Households	2.3%	1.1%	0.6%
Family Population	2.1%	0.9%	0.5%
Owner Occupied Housing Units	1.1%	1.2%	0.0%
Median Household Income	3.3%	2.6%	2.5%

Population by Age	Census 2020		2025		2030	
	Number	Percent	Number	Percent	Number	Percent
0-4	363	4.1%	370	3.9%	400	3.8%
5-9	357	4.0%	340	3.6%	344	3.3%
10-14	305	3.4%	329	3.5%	322	3.0%
15-19	275	3.1%	345	3.6%	375	3.5%
20-24	529	5.9%	589	6.2%	720	6.8%
25-29	969	10.9%	863	9.1%	991	9.4%
30-34	945	10.6%	944	9.9%	880	8.3%
35-39	754	8.5%	862	9.1%	907	8.6%
40-44	639	7.2%	725	7.6%	880	8.3%
45-49	584	6.6%	646	6.8%	763	7.2%
50-54	560	6.3%	610	6.4%	693	6.6%
55-59	574	6.5%	583	6.1%	658	6.2%
60-64	581	6.5%	558	5.9%	598	5.7%
65-69	558	6.3%	584	6.1%	599	5.7%
70-74	452	5.1%	551	5.8%	606	5.7%
75-79	253	2.8%	347	3.6%	444	4.2%
80-84	114	1.3%	167	1.8%	239	2.3%
Age 85+	89	1.0%	95	1.0%	139	1.3%

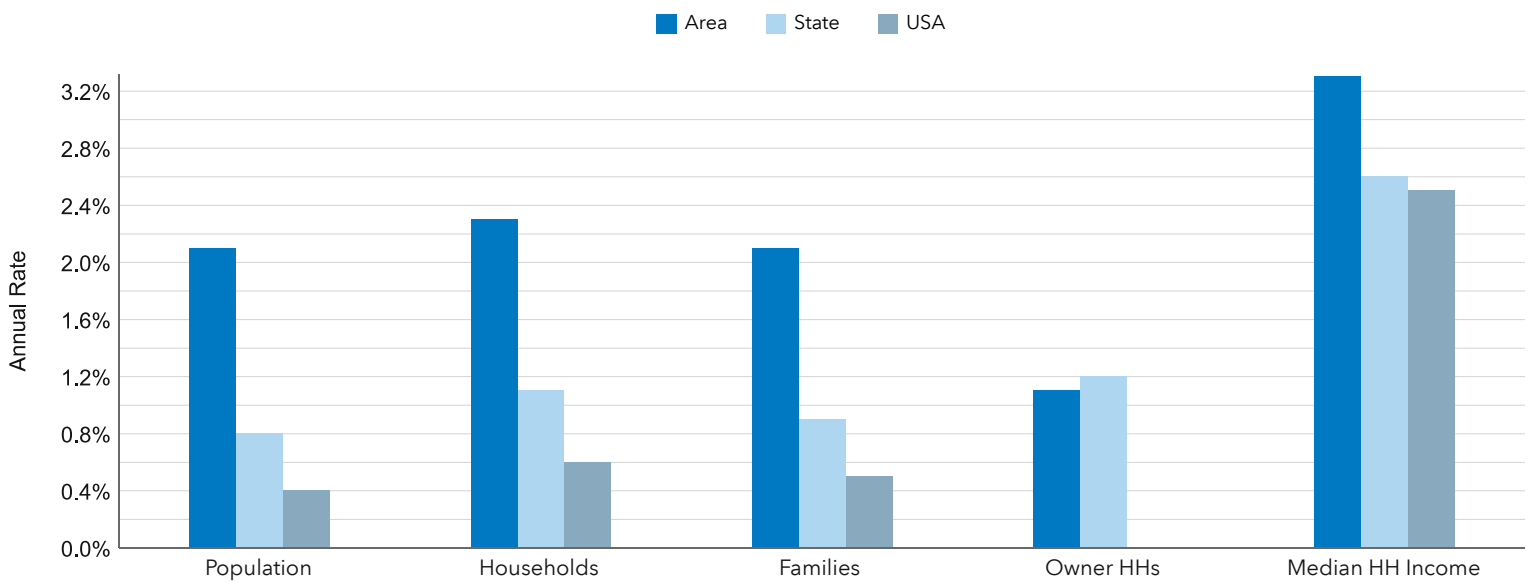
Households by Income	2025		2030	
	Number	Percent	Number	Percent
<\$10,000	885	17.9%	923	16.6%
\$10,000-14,999	413	8.3%	435	7.8%
\$15,000-19,999	236	4.8%	221	4.0%
\$20,000-24,999	235	4.8%	235	4.2%
\$25,000-29,999	111	2.2%	102	1.8%
\$30,000-34,999	164	3.3%	163	2.9%
\$35,000-39,999	166	3.4%	162	2.9%
\$40,000-44,999	108	2.2%	114	2.1%
\$45,000-49,999	95	1.9%	95	1.7%
\$50,000-59,999	212	4.3%	237	4.3%
\$60,000-74,999	441	8.9%	518	9.3%
\$75000-99999	386	7.8%	445	8.0%
\$100,000-124,999	361	7.3%	431	7.8%
\$125,000-149,999	289	5.8%	367	6.6%
\$150000-199999	362	7.3%	441	8.0%
\$200,000-249,999	183	3.7%	246	4.4%
\$250,000-299,999	106	2.1%	148	2.7%
\$300,000-399,999	92	1.9%	137	2.5%
\$400,000-499,999	34	0.7%	30	0.5%
\$500,000+	74	1.5%	94	1.7%
Median Household Income	\$52,720	-	\$62,056	-
Average Household Income	\$84,261	-	\$92,592	-
Per Capita Income	\$43,152	-	\$47,775	-

Race and Ethnicity	Census 2020		2025		2030	
	Number	Percent	Number	Percent	Number	Percent
White Alone	6,028	67.7%	6,423	67.6%	7,021	66.5%
Black Alone	1,976	22.2%	2,060	21.7%	2,327	22.0%
American Indian	38	0.4%	39	0.4%	45	0.4%
Asian Alone	99	1.1%	114	1.2%	139	1.3%
Pacific Islander	50	0.6%	62	0.7%	73	0.7%
Some Other Race	191	2.1%	219	2.3%	262	2.5%
Two or More Races	519	5.8%	588	6.2%	694	6.6%
Hispanic (Any Race)	391	4.4%	467	4.9%	569	5.4%

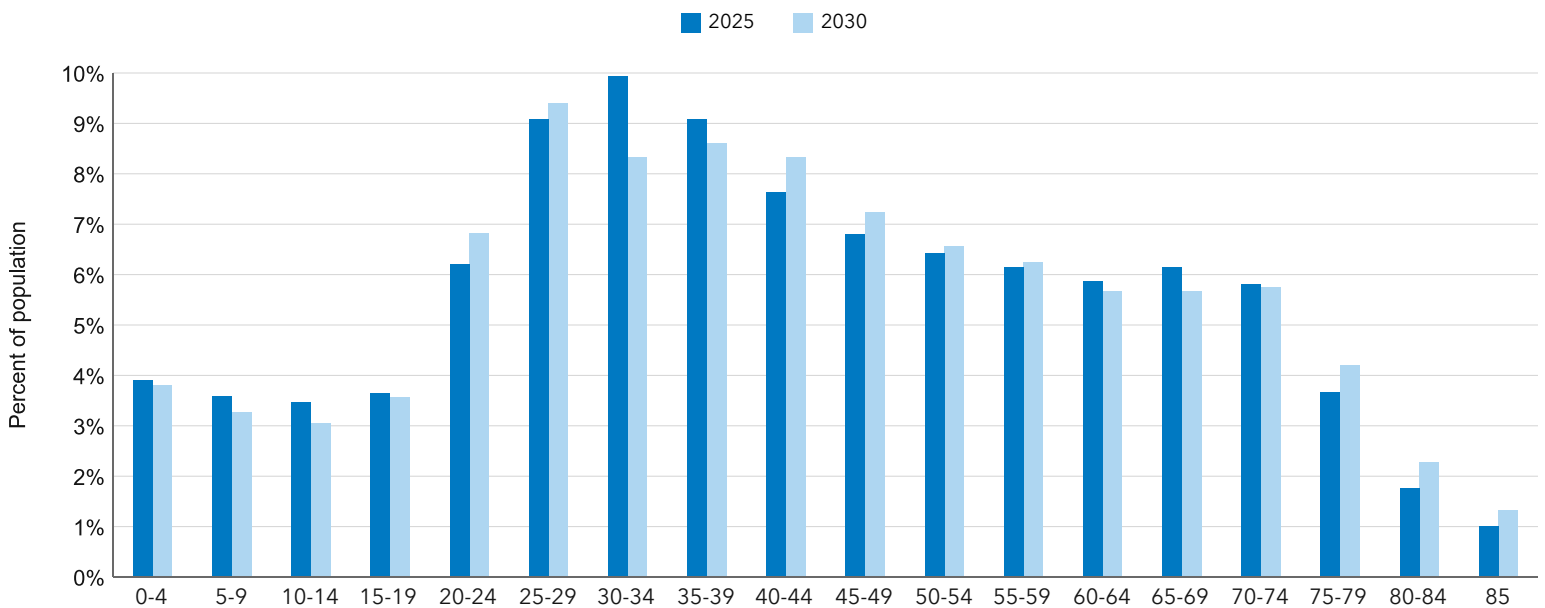
## Key Indicators for 2025



## Trends: 2025 - 2030 Annual Rate



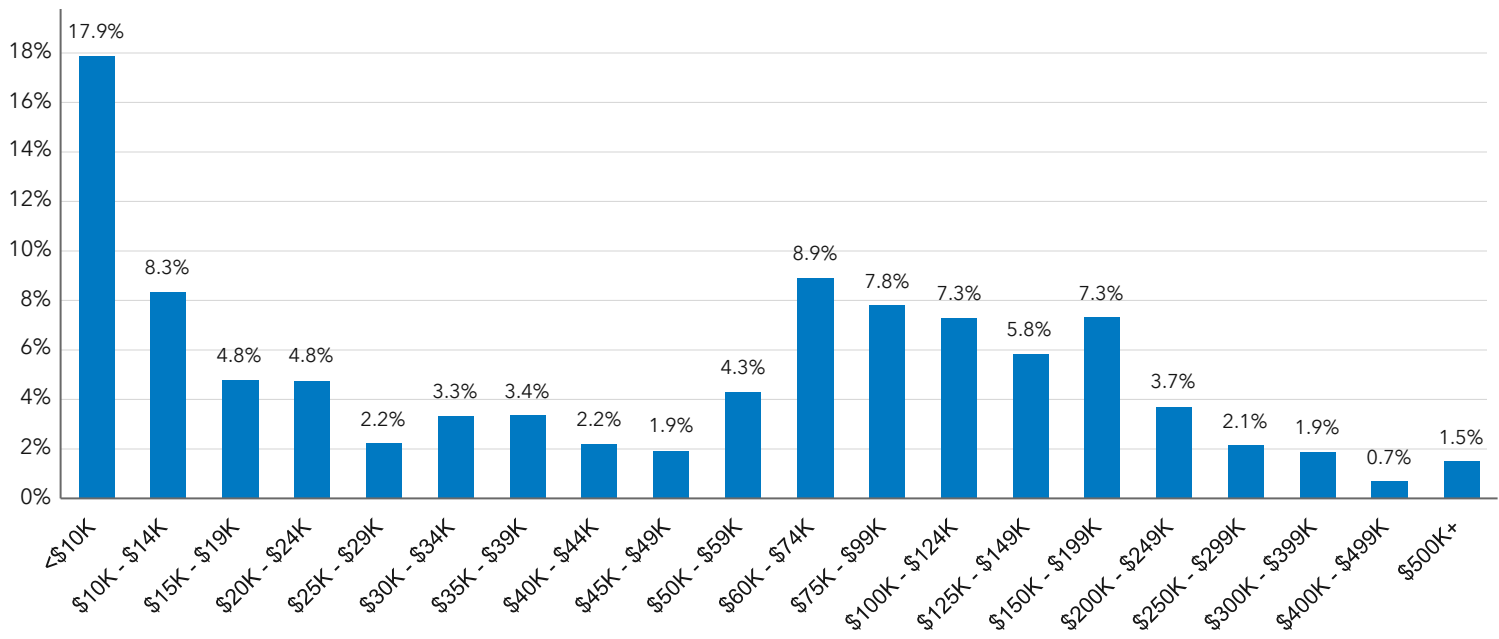
## Population by Age



## Key Indicators for 2025



## Households by Income for 2025



## Population by Race

