



## Building K

416 Pirkle Ferry Rd, Cumming, GA 30040



**Andrew Lovejoy**

Mydogjack, LLC

4994 Lower Roswell Rd, Suite 17, Marietta, GA 30068

[Andy@cecincga.com](mailto:Andy@cecincga.com)

(404) 717-5809

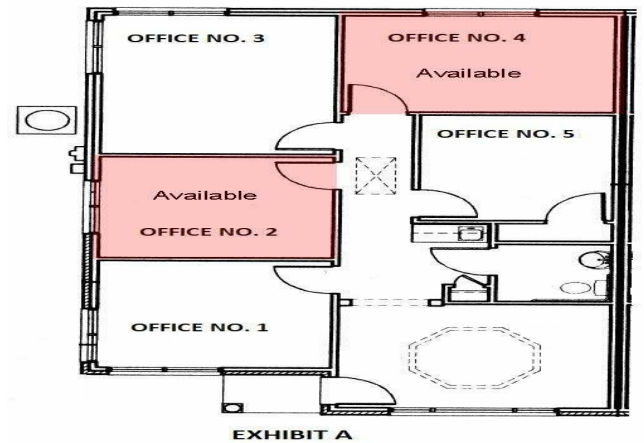


## Building K

\$38.90 /SF/YR

Large executive offices available on the first floor and perfect for someone who needs to work outside the house. Office No. 2 (128 sf) is available for \$415 per month and No. 4 is available for \$615 (138 sf) per month. All utilities included (business class internet, electricity, water & sewer, and weekly janitorial services). Offices include desk and side chair....

- High traffic area

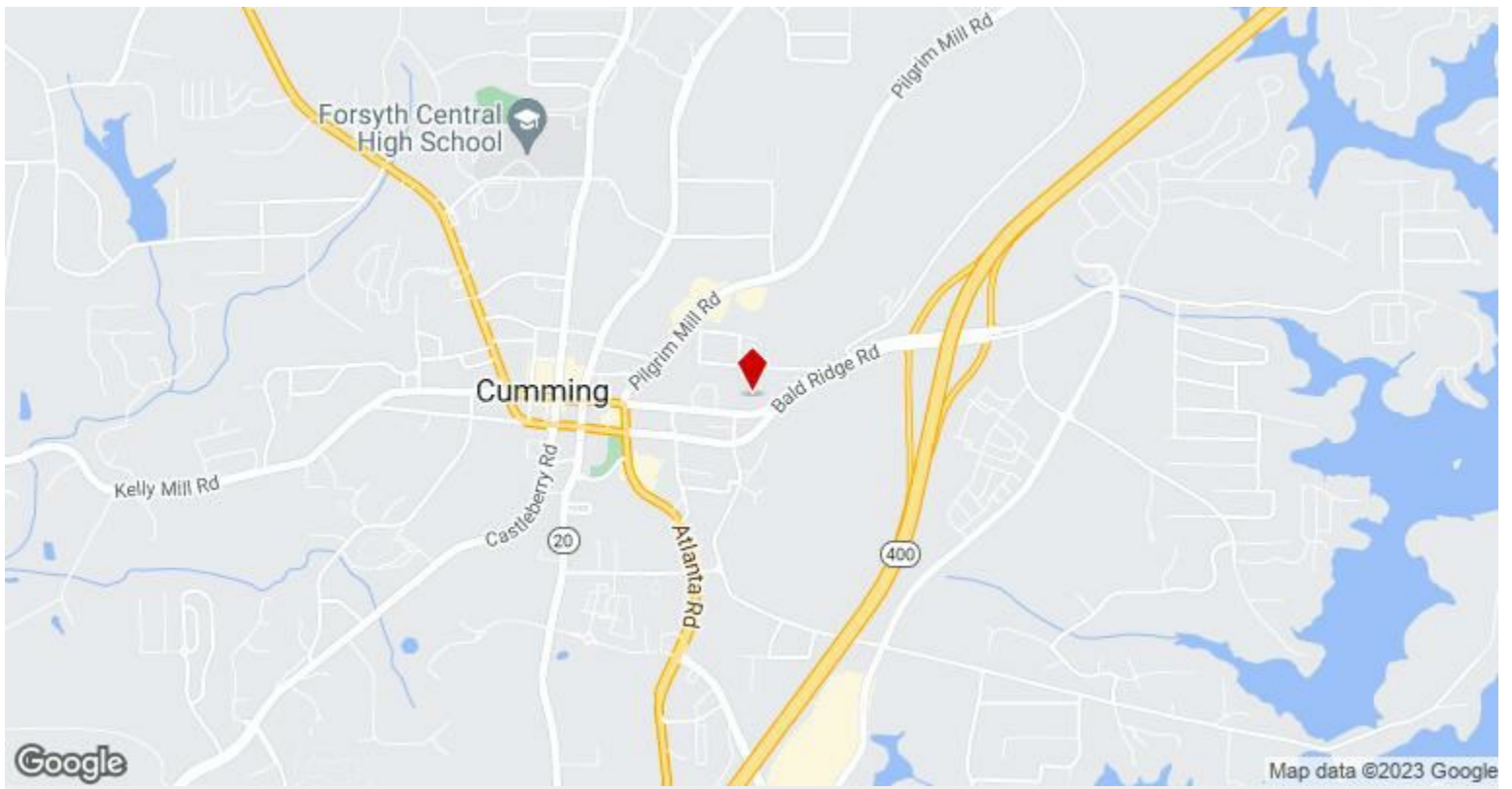


Rental Rate:	\$38.90 /SF/YR
Min. Divisible:	128 SF
Property Type:	Office
Building Class:	C
Rentable Building Area:	1,124 SF
Year Built:	2005
Walk Score ®:	40 (Car-Dependent)
Rental Rate Mo:	\$3.24 /SF/MO

## 1st Floor Ste 300

Space Available	128 - 138 SF
Rental Rate	\$38.90 /SF/YR
Date Available	Now
Service Type	Full Service
Built Out As	Standard Office
Space Type	Relet
Space Use	Office
Lease Term	1 - 5 Years

Large executive offices available on the first floor and perfect for someone who needs to work outside the house. Office No. 2 (128 sf) is available for \$415 per month and No. 4 is available for \$615 (138 sf) per month. All utilities included (business class internet, electricity, water & sewer, and weekly janitorial services). Offices include desk and side chair.



## 416 Pirkle Ferry Rd, Cumming, GA 30040

Large executive offices available on the first floor and perfect for someone who needs to work outside the house. Office No. 2 (128 sf) is available for \$415 per month and No. 4 is available for \$615 (138 sf) per month. All utilities included (business class internet, electricity, water & sewer, and weekly janitorial services). Offices include desk and side chair.

# Property Photos



Floor Plan



Web Size-13

# Property Photos

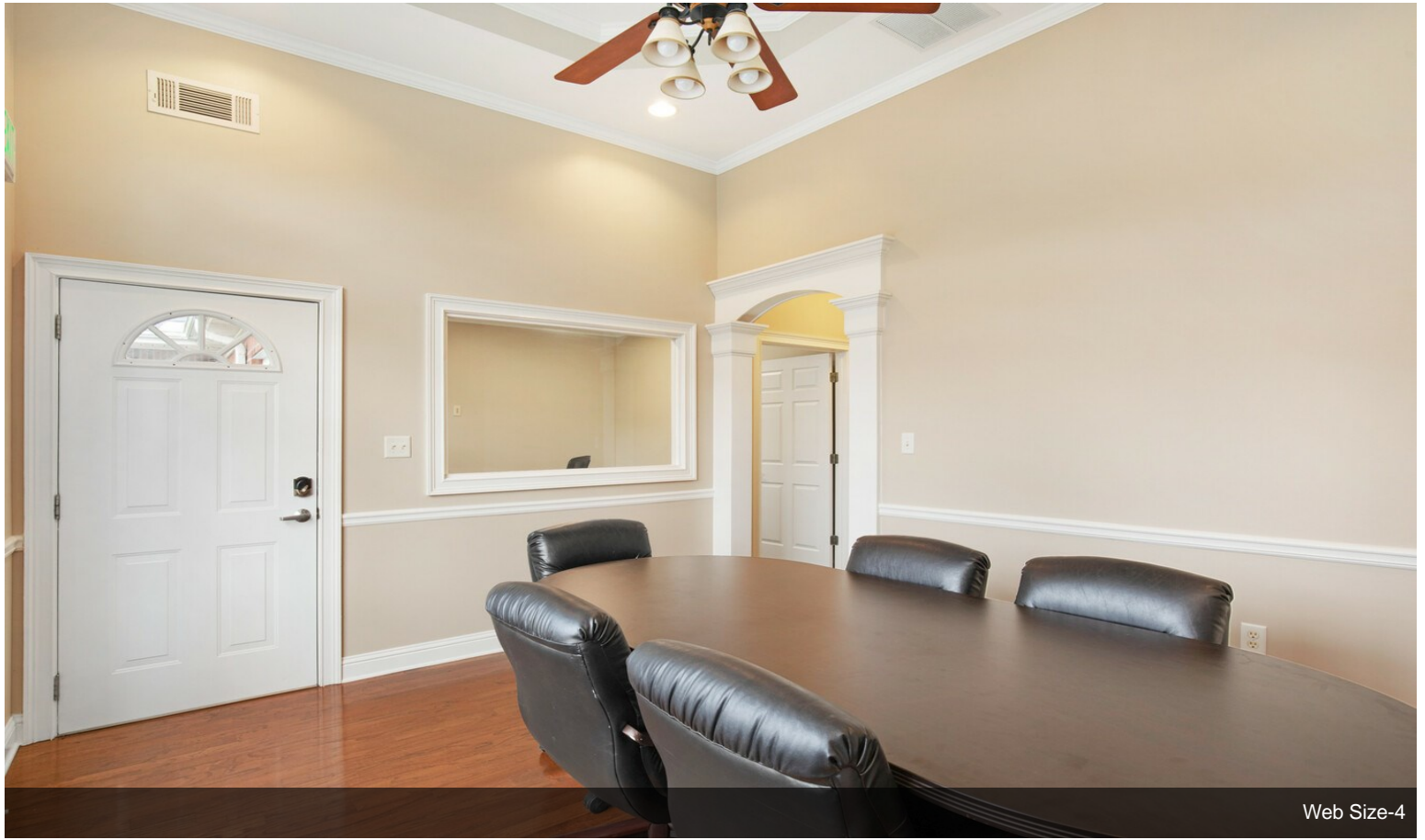


Web Size-20

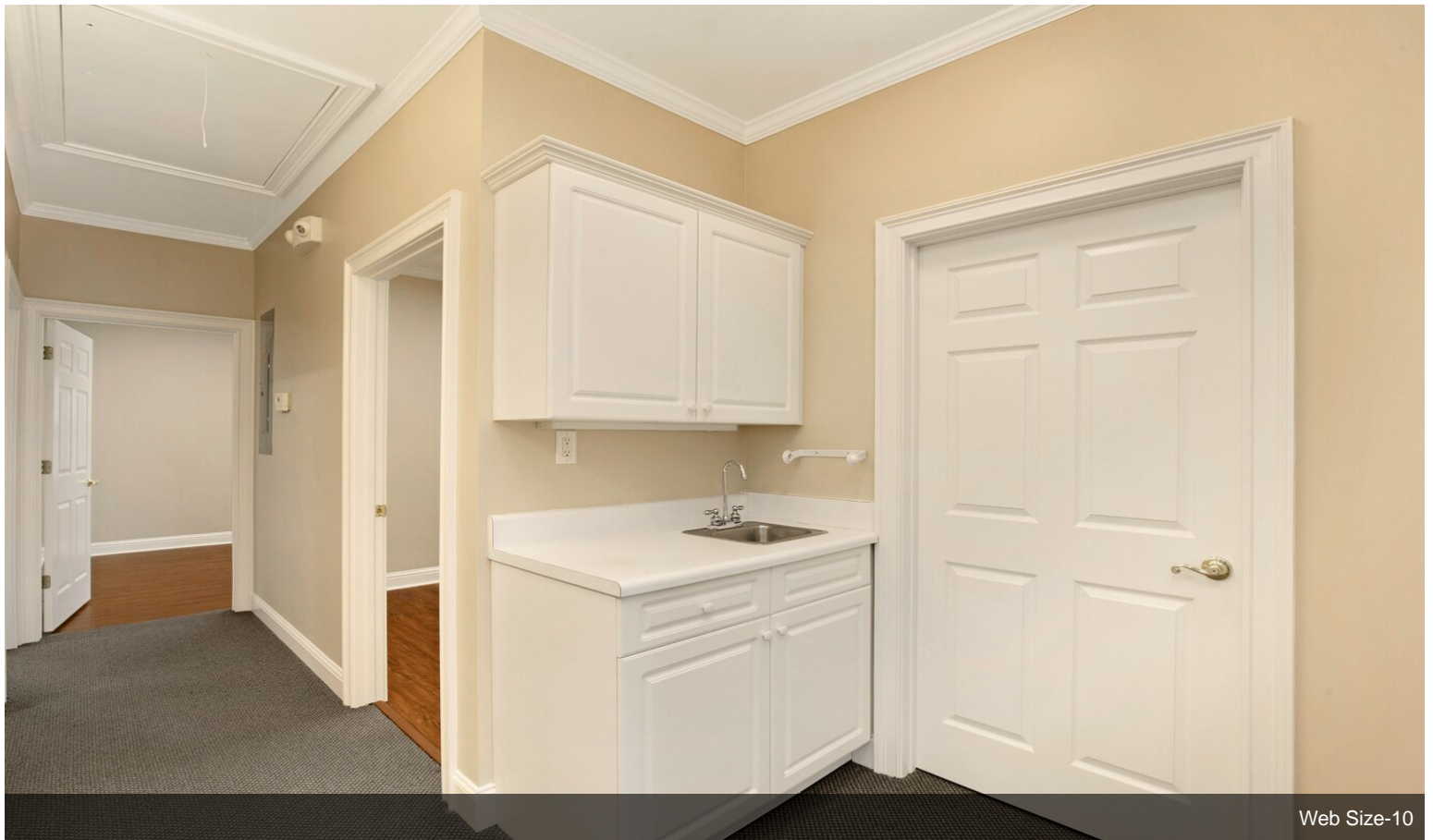


Web Size-5

# Property Photos



Web Size-4



Web Size-10

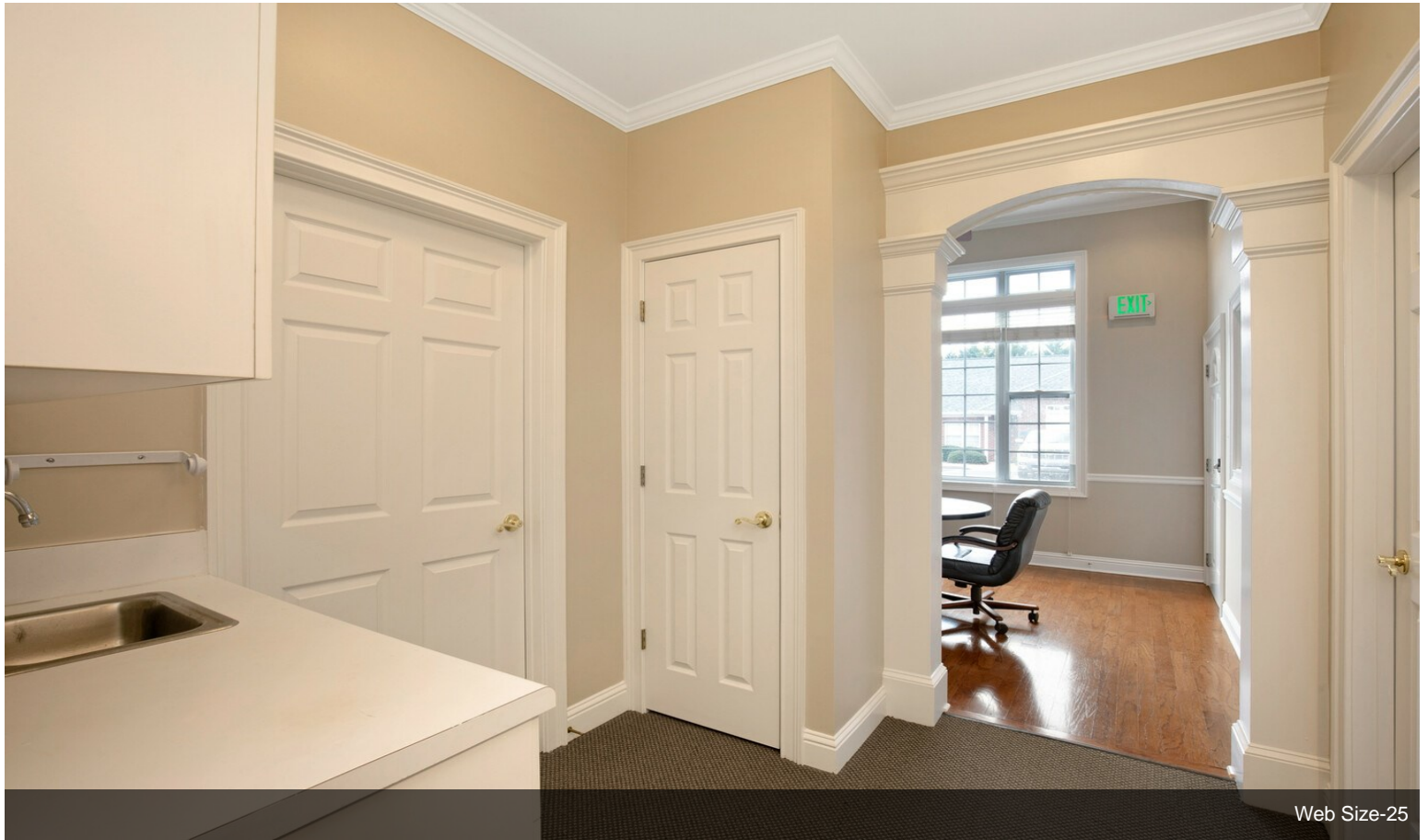
# Property Photos



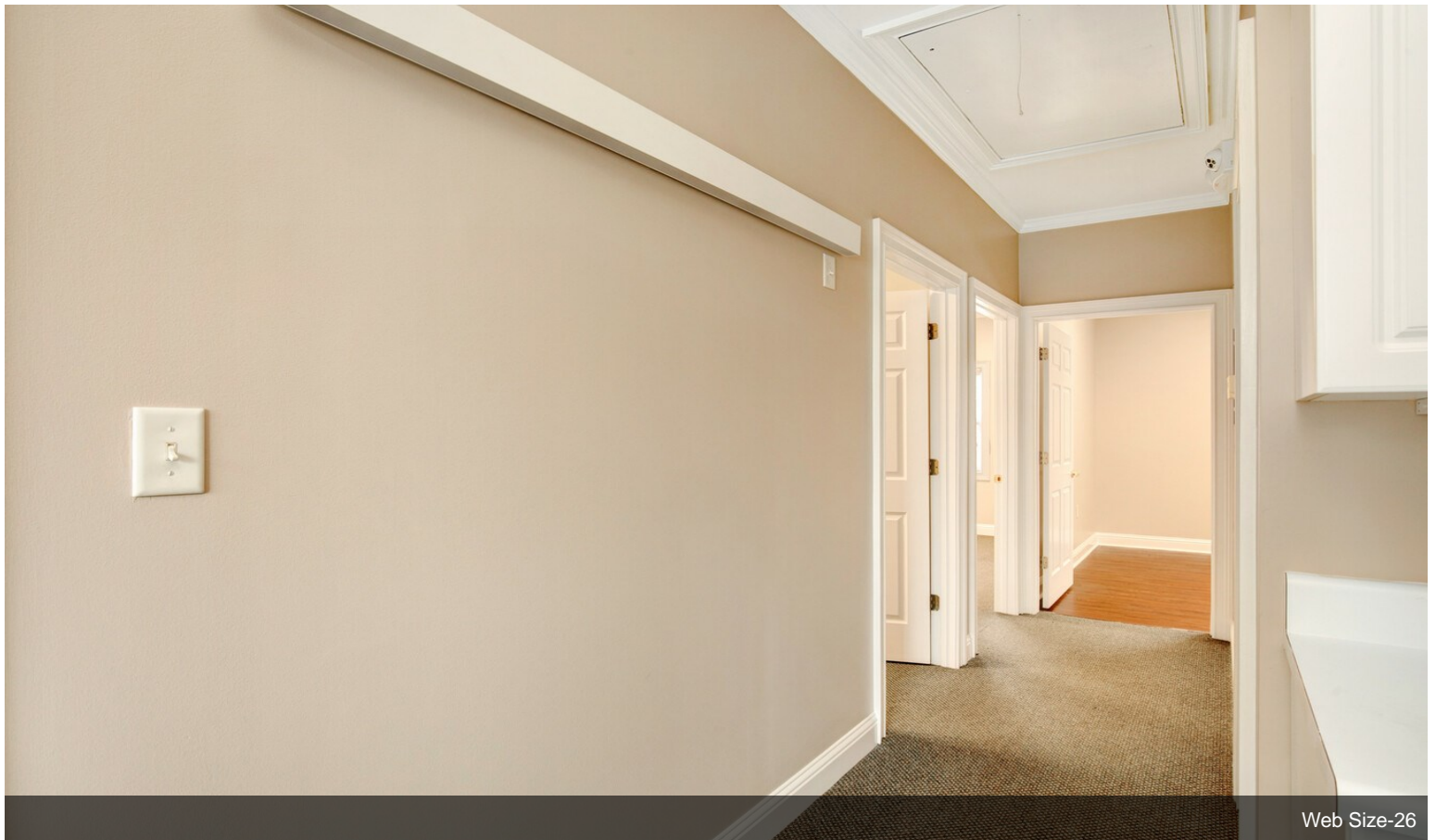
# Property Photos



# Property Photos



Web Size-25



Web Size-26