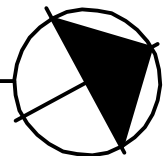



# 1 SITE PLAN

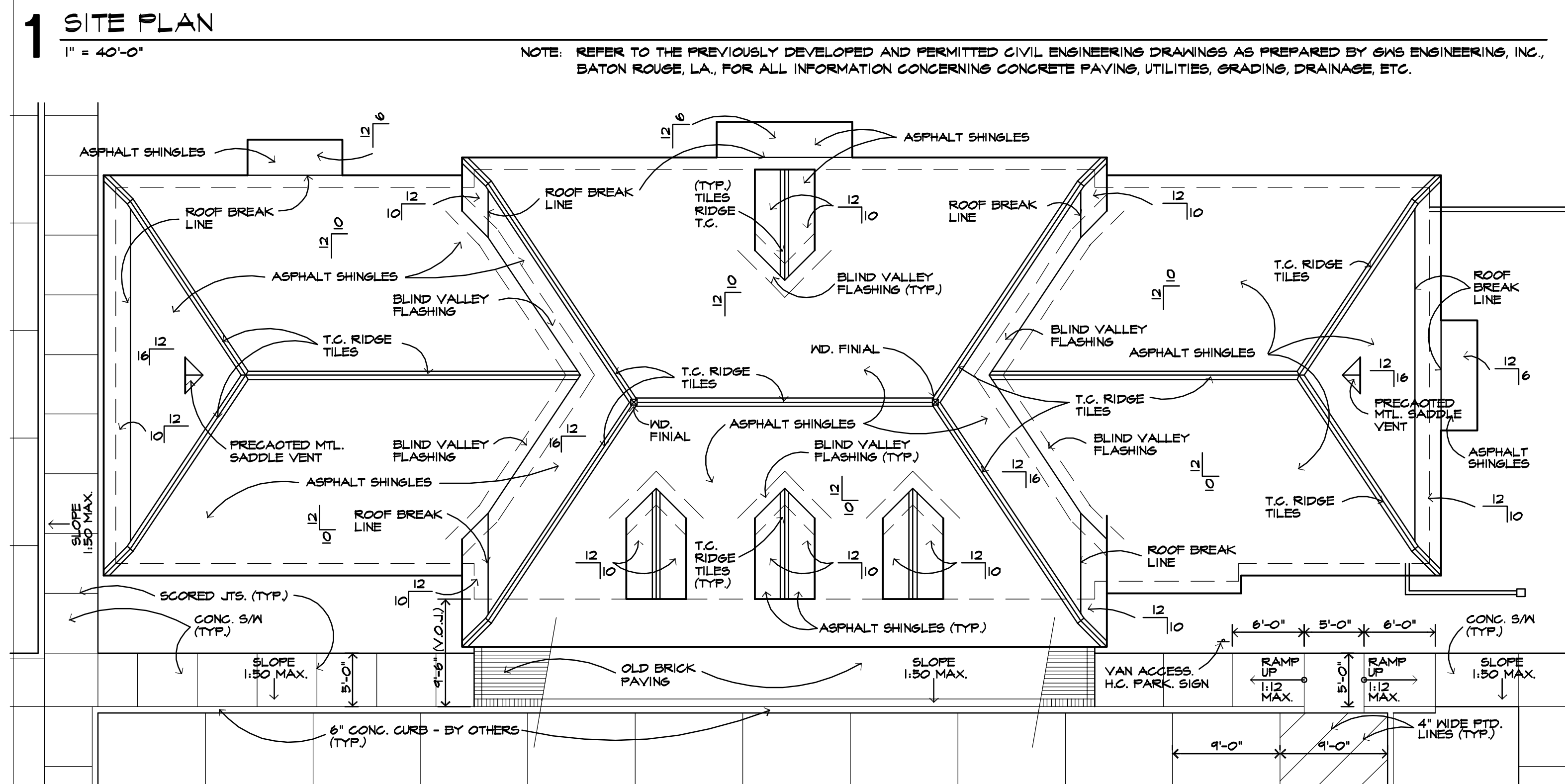
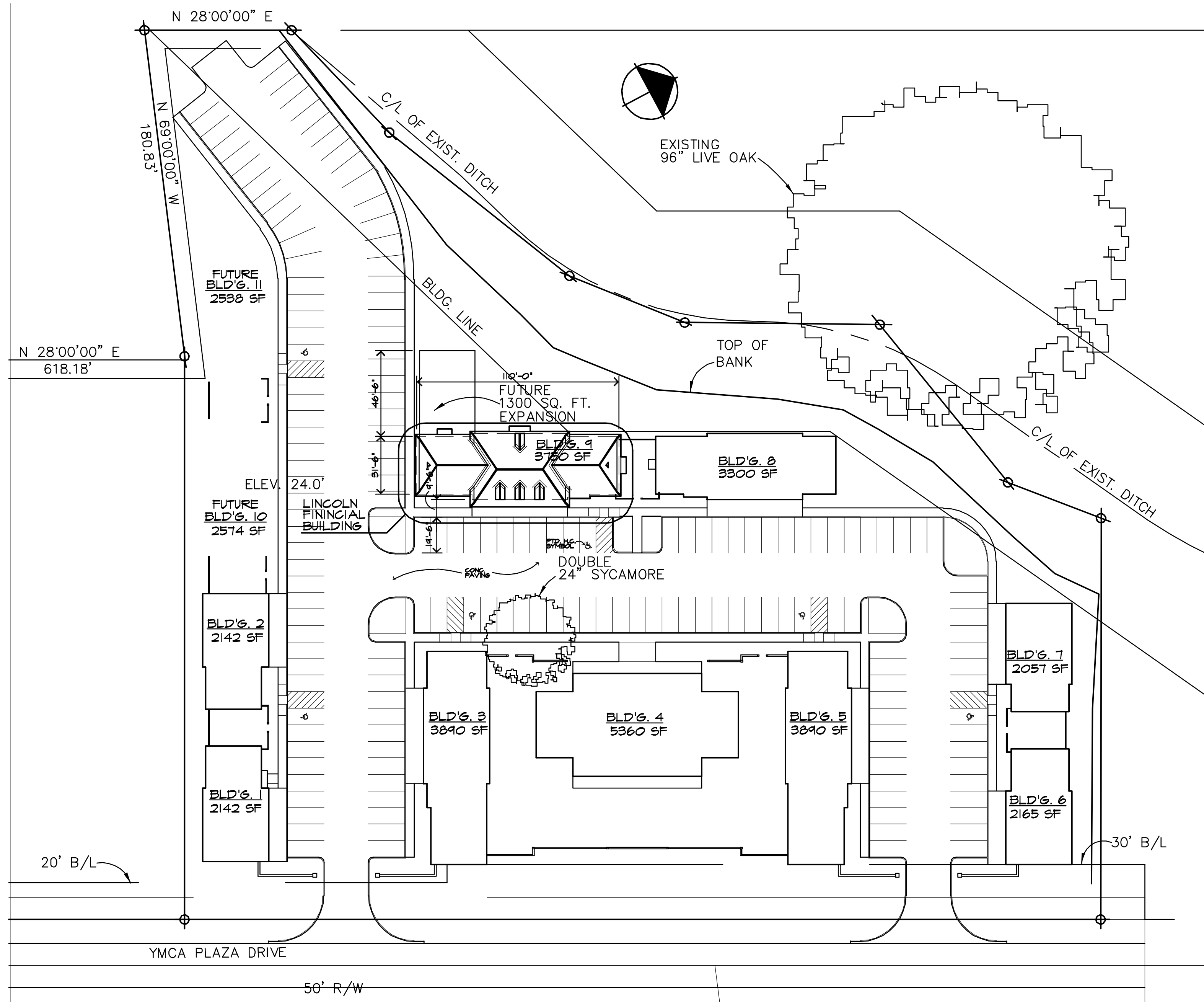
1" = 100'-0"



NOTE: REFER TO THE PREVIOUSLY DEVELOPED AND PERMITTED CIVIL ENGINEERING DRAWINGS AS PREPARED BY GWS ENGINEERING, INC., BATON ROUGE, LA., FOR ALL INFORMATION CONCERNING CONCRETE PAVING, UTILITIES, GRADING, DRAINAGE, ETC.

PROJECT STATISTICS	
AREA CALCULATIONS	
CONDITIONED SPACE:	3,717 SQ. FT.
COVERED PORCHES / OVERHANGS	316 SQ. FT.
<b>TOTAL SQ.FT.:</b>	<b>4,033 SQ. FT.</b>
CONSTRUCTION TYPE = TYPE VI, UNPROTECTED, UNSPRINKLERED	
OCCUPANCY	
BUSINESS (SBC 1991)	
BUSINESS (LSC 1991)	
ZONING : B-1	

<b>LINCOLN FINANCIAL ADVISORS OFFICE BUILDING</b>		
ONE OAK SQUARE OFFICE PARK, YMCA PLAZA DRIVE	LOT 3, YMCA PLAZA	
 <b>COCKFIELD · JACKSON</b> <b>Architects</b> A LIMITED LIABILITY COMPANY		
6717 Perkins Road Baton Rouge, Louisiana 70808 (504) 761-1680		
DATE	OCTOBER 20, 1997	JOB NO. 34-97
		jcg



**2 FOUNDATION LAYOUT PLAN**  
1/8" = 1'-0"

NOTE: PLAN SHOWN FOR LAYOUT PURPOSES ONLY. REFER TO THE ATTACHED DRAWINGS BY POST TENSIONED SALES, INC., FOR POST-TENSIONED SLAB STRUCTURAL INFORMATION.

**3 FOUNDATION DETAIL**  
3/4" = 1'-0"

**4 FOUNDATION DETAIL**  
3/4" = 1'-0"

**6 FOUNDATION DETAIL**  
3/4" = 1'-0"

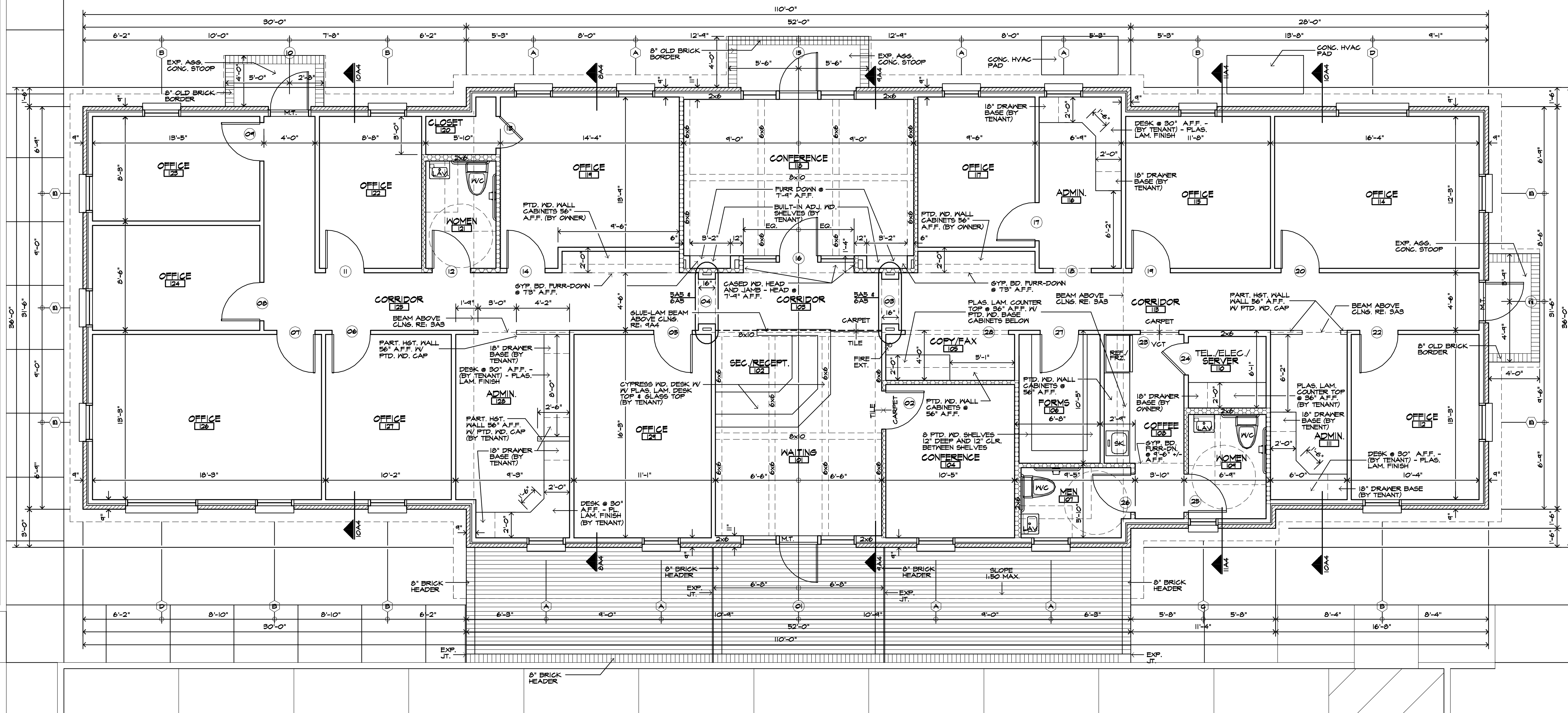
**PROJECT STATISTICS**  
AREA CALCULATIONS

CONDITIONED SPACE:	3,717 SQ. FT.
COVERED PORCHES:	316 SQ. FT.
TOTAL SQ.FT.:	4,033 SQ. FT.

CONSTRUCTION TYPE = TYPE VI, UNPROTECTED, UNSPRINKLERED  
OCCUPANCY  
BUSINESS (SBC 1991)  
BUSINESS (LSC 1991)

ZONING : B-1  
REFERENCE CODES  
STANDARD BUILDING CODE - 1991 EDITION  
NFPA 101, LIFE SAFETY CODE - 1991 EDITION  
ADA GUIDELINES

NOTE:  
1. ALL RAMP AND SIDEWALK CONSTRUCTION SHALL COMPLY WITH THE ADA ACCESSIBILITY GUIDELINES.



**1 FLOOR PLAN**  
1/4" = 1'-0"

**FLOOR PLAN LEGEND**

- DENOTES SOUND INSULATION FULL HEIGHT OF WALL.
- DIMENSIONS ARE TO THE OUTSIDE FACE OF BRICK OR WOOD STUDS AT EXTERIOR WALL. DIMENSIONS ARE TO THE FACE OF BRICK OR WOOD STUDS AT INTERIOR WALLS.
- DIMENSIONS ARE TO THE CENTERLINE OF INTERIOR WOOD STUD WALLS AND TO THE CENTER OF DOORS AND WINDOWS.

**FLOOR PLAN NOTES**

1. ALL EXTERIOR AND INTERIOR WALLS/PARTITIONS ARE TO BE FRAMED WITH 2x4 STUDS (2x6'S WHERE SHOWN) AT 16" O. C.
2. PROVIDE SAFETY SLIPZING IN HAZARDOUS LOCATIONS AS DEFINED BY SBC (1991) SECTION 2103.2
3. LOCKS ON DOORS IN MEANS OF EGRESS SHALL NOT REQUIRE THE USE OF A KEY, SPECIAL DEVICE OR SPECIAL KNOWLEDGE TO OPEN IN THE DIRECTION OF EGRESS.
4. INSULATION AND INSULATION ASSEMBLIES SHALL MEET THE REQUIREMENTS OF SECTION 714, STANDARD BUILDING CODE, 1991 EDITION
  - a. CONCEALED INSULATION SHALL HAVE A FLAME SPREAD OF 0-75 AND A SMOKE DEVELOPED OF 0-450 EXCEPT THAT IN COMBUSTIBLE (WOOD FRAME) CONSTRUCTION, FACING MAY COMPLY WITH SBC 714.2.2
  - b. EXPOSED INSULATION SHALL HAVE A FLAME SPREAD OF 0-25 AND A SMOKE DEVELOPED OF 0-450.

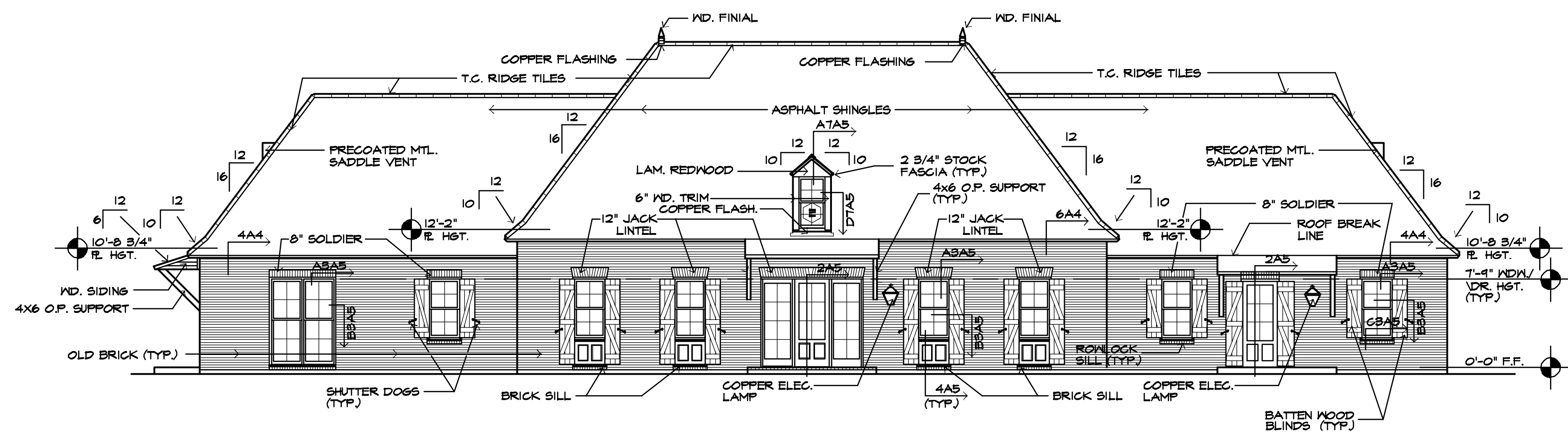
**ROOM FINISH SCHEDULE**

ROOM	FLOOR	BASE	TRIM	WALLS	CLG.	CROWN	WHT.	REMARKS
WAITING	101	12x12 SLATE TILE	5/16" STK. WD.	PTD. STYP. BD.	PTD. STYP. BD.	PTD. STYP. BD.	PTD. STYP. BD.	BEAMED CLG.
SEC. / RECEPT.	102	12x12 SLATE TILE	5/16" STK. WD.	PTD. STYP. BD.	PTD. STYP. BD.	PTD. STYP. BD.	PTD. STYP. BD.	BEAMED CLG.
CORRIDOR	103	CARPET	5/16" STK. WD.	PTD. STYP. BD.	PTD. STYP. BD.	PTD. STYP. BD.	PTD. STYP. BD.	
CONFERENCE	104	CARPET	5/16" STK. WD.	PTD. STYP. BD.	PTD. STYP. BD.	PTD. STYP. BD.	PTD. STYP. BD.	
COPY / FAX	105	CARPET	5/16" STK. WD.	PTD. STYP. BD.	PTD. STYP. BD.	PTD. STYP. BD.	PTD. STYP. BD.	
FORMS	106	CARPET	5/16" STK. WD.	PTD. STYP. BD.	PTD. STYP. BD.	PTD. STYP. BD.	PTD. STYP. BD.	
MEN	107	CARPET	5/16" STK. WD.	PTD. STYP. BD.	PTD. STYP. BD.	PTD. STYP. BD.	PTD. STYP. BD.	
COFFEE	108	CARPET	5/16" STK. WD.	PTD. STYP. BD.	PTD. STYP. BD.	PTD. STYP. BD.	PTD. STYP. BD.	FURR DN. CLNS. @ 9'-6" +/-
WOMEN	109	CARPET	5/16" STK. WD.	PTD. STYP. BD.	PTD. STYP. BD.	PTD. STYP. BD.	PTD. STYP. BD.	
TEL./ELEC./SERV.	110	CARPET	5/16" STK. WD.	PTD. STYP. BD.	PTD. STYP. BD.	PTD. STYP. BD.	PTD. STYP. BD.	
ADMINISTRATION	111	CARPET	5/16" STK. WD.	PTD. STYP. BD.	PTD. STYP. BD.	PTD. STYP. BD.	PTD. STYP. BD.	
OFFICE	112	CARPET	5/16" STK. WD.	PTD. STYP. BD.	PTD. STYP. BD.	PTD. STYP. BD.	PTD. STYP. BD.	
CORRIDOR	113	CARPET	5/16" STK. WD.	PTD. STYP. BD.	PTD. STYP. BD.	PTD. STYP. BD.	PTD. STYP. BD.	
OFFICE	114	CARPET	5/16" STK. WD.	PTD. STYP. BD.	PTD. STYP. BD.	PTD. STYP. BD.	PTD. STYP. BD.	
OFFICE	115	CARPET	5/16" STK. WD.	PTD. STYP. BD.	PTD. STYP. BD.	PTD. STYP. BD.	PTD. STYP. BD.	
ADMINISTRATION	116	CARPET	5/16" STK. WD.	PTD. STYP. BD.	PTD. STYP. BD.	PTD. STYP. BD.	PTD. STYP. BD.	
OFFICE	117	CARPET	5/16" STK. WD.	PTD. STYP. BD.	PTD. STYP. BD.	PTD. STYP. BD.	PTD. STYP. BD.	
CONFERENCE	118	CARPET	5/16" STK. WD.	PTD. STYP. BD.	PTD. STYP. BD.	PTD. STYP. BD.	PTD. STYP. BD.	BEAMED CLG.
OFFICE	119	CARPET	5/16" STK. WD.	PTD. STYP. BD.	PTD. STYP. BD.	PTD. STYP. BD.	PTD. STYP. BD.	
CLOSET	120	CARPET	5/16" STK. WD.	PTD. STYP. BD.	PTD. STYP. BD.	PTD. STYP. BD.	PTD. STYP. BD.	
WOMEN	121	CARPET	5/16" STK. WD.	PTD. STYP. BD.	PTD. STYP. BD.	PTD. STYP. BD.	PTD. STYP. BD.	
OFFICE	122	CARPET	5/16" STK. WD.	PTD. STYP. BD.	PTD. STYP. BD.	PTD. STYP. BD.	PTD. STYP. BD.	
OFFICE	123	CARPET	5/16" STK. WD.	PTD. STYP. BD.	PTD. STYP. BD.	PTD. STYP. BD.	PTD. STYP. BD.	
OFFICE	124	CARPET	5/16" STK. WD.	PTD. STYP. BD.	PTD. STYP. BD.	PTD. STYP. BD.	PTD. STYP. BD.	
CORRIDOR	125	CARPET	5/16" STK. WD.	PTD. STYP. BD.	PTD. STYP. BD.	PTD. STYP. BD.	PTD. STYP. BD.	
OFFICE	126	CARPET	5/16" STK. WD.	PTD. STYP. BD.	PTD. STYP. BD.	PTD. STYP. BD.	PTD. STYP. BD.	
OFFICE	127	CARPET	5/16" STK. WD.	PTD. STYP. BD.	PTD. STYP. BD.	PTD. STYP. BD.	PTD. STYP. BD.	
ADMINISTRATION	128	CARPET	5/16" STK. WD.	PTD. STYP. BD.	PTD. STYP. BD.	PTD. STYP. BD.	PTD. STYP. BD.	
OFFICE	129	CARPET	5/16" STK. WD.	PTD. STYP. BD.	PTD. STYP. BD.	PTD. STYP. BD.	PTD. STYP. BD.	

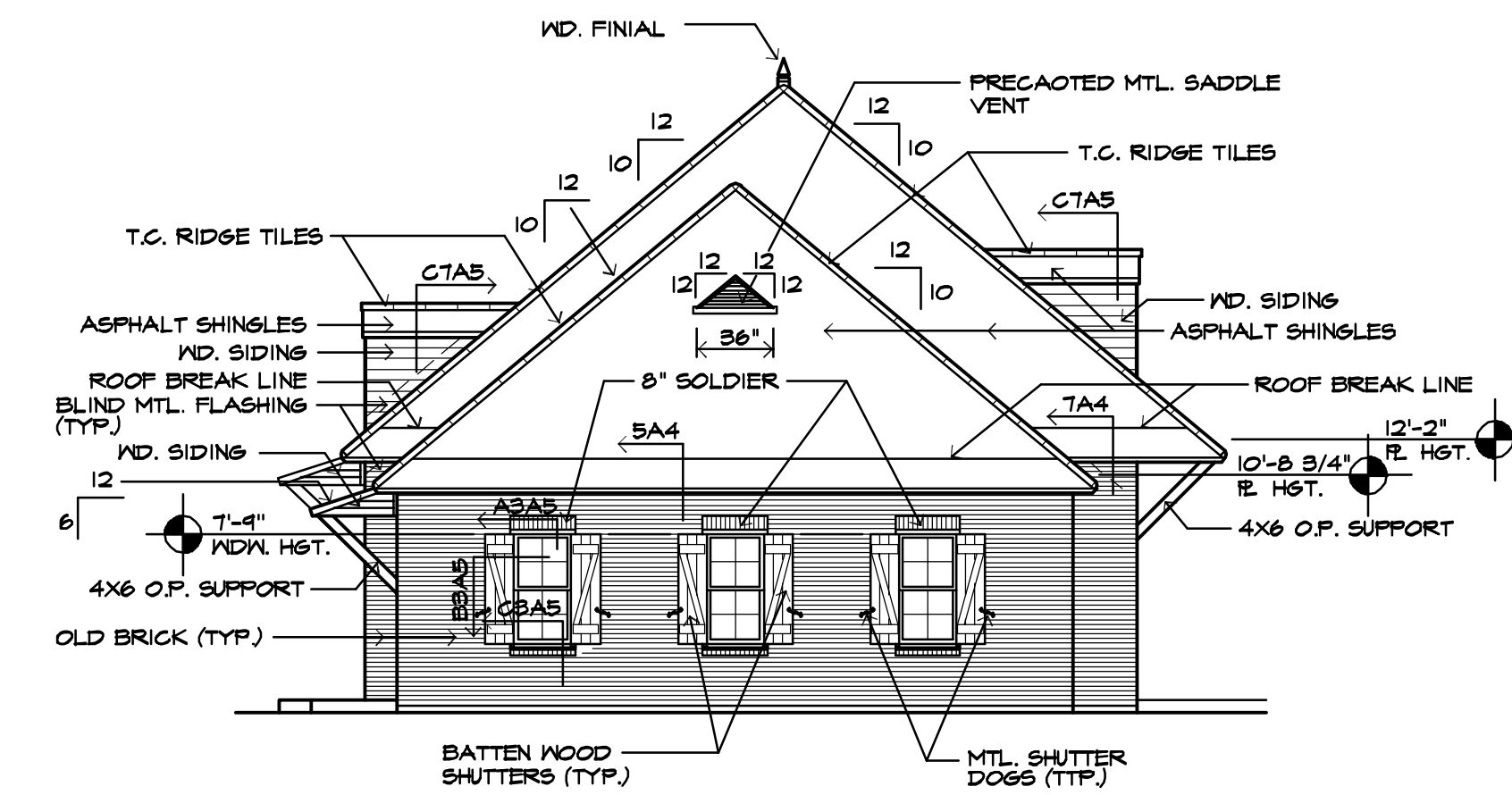
**OPENING SCHEDULE**

MARK	SIZE	DESCRIPTION	MARK	SIZE	DESCRIPTION
01	3'-0" x 7'-4" x 1 3/4"	CUSTOM WOOD EXTERIOR R. P. DOOR (6 LTS/2 PNL'S) W/ 2'-6" WIDE SIDELITES (6 LITES EA.) W/ 9 SEGMENTAL ARCHED TRANSOMS (2 LTS. EA/2'-0" OVERALL HST/1/4"-10 3/4" RADIUS) & 2 1/2" HEAD AND SIDE BARS RE: 5A5	26	3'-0" x 7'-0" x 1 3/8"	STOCK WOOD R.P. INTERIOR DOOR (4 PNL'S)
02	3'-0" x 7'-4" x 1 3/8"	CUSTOM WOOD R.P. INTERIOR DOOR (6 PNL'S)	27	3'-0" x 7'-0" x 1 3/8"	STOCK WOOD R.P. INTERIOR DOOR (4 PNL'S)
03	3'-6" x 7'-4"	CASED WOOD OPENINGS - RE: 5A5 & 6A5	28	3'-0" x 7'-0"	CASED WOOD OPENING
04	3'-6" x 7'-4"	CASED WOOD OPENINGS - RE: 5A5 & 6A5			
05	3'-0" x 7'-0" x 1 3/8"	STOCK WOOD R.P. INTERIOR DOOR (4 PNL'S)			
06	3'-0" x 7'-0" x 1 3/8"	STOCK WOOD R.P. INTERIOR DOOR (4 PNL'S)			
07	3'-0" x 7'-0" x 1 3/8"	STOCK WOOD R.P. INTERIOR DOOR (4 PNL'S)			
08	3'-0" x 7'-0" x 1 3/8"	STOCK WOOD R.P. INTERIOR DOOR (4 PNL'S)			
09	3'-0" x 7'-0" x 1 3/8"	STOCK WOOD R.P. INTERIOR DOOR (4 PNL'S)			
10	3'-0" x 7'-4" x 1 3/4"	CUSTOM WOOD R.P. EXTERIOR DOOR (2 PNL'S/6 LITES)			
11	3'-0" x 7'-0" x 1 3/8"	STOCK WOOD R.P. INTERIOR DOOR (4 PNL'S)			
12	3'-0" x 7'-0" x 1 3/8"	STOCK WOOD R.P. INTERIOR DOOR (4 PNL'S)			
13	2'-6" x 7'-0" x 1 3/8"	STOCK WOOD R.P. INTERIOR DOOR (4 PNL'S)			
14	3'-0" x 7'-0" x 1 3/8"	STOCK WOOD R.P. INTERIOR DOOR (4 PNL'S)			
15	3'-0" x 7'-4" x 1 3/4"	CUSTOM WOOD EXTERIOR R. P. DOOR (6 LTS/2 PNL'S) W/ 2'-6" WIDE SIDELITES (6 LITES EA.) AND 2 1/2" MULLIONS - RE: 1A4			
16	3'-0" x 7'-4" x 1 3/8"	CUSTOM WOOD EXTERIOR R. P. DOOR (6 LTS/2 PNL'S) W/ 2'-6" WIDE SIDELITES (6 LITES EA.) AND 2 1/2" MULLIONS - RE: 1A4 SIM.			
17	3'-0" x 7'-0" x 1 3/8"	STOCK WOOD R.P. INTERIOR DOOR (4 PNL'S)			
18	3'-0" x 7'-0"	CASED WOOD OPENINGS			
19	3'-0" x 7'-0" x 1 3/8"	STOCK WOOD R.P. INTERIOR DOOR (4 PNL'S)			
20	3'-0" x 7'-0" x 1 3/8"	STOCK WOOD R.P. INTERIOR DOOR (4 PNL'S)			
21	3'-0" x 7'-4" x 1 3/4"	CUSTOM WOOD R.P. EXTERIOR DOOR (2 PNL'S/6 LITES)			
22	3'-0" x 7'-0" x 1 3/8"	STOCK WOOD R.P. INTERIOR DOOR (4 PNL'S)			
23	3'-0" x 7'-0"	CASED WOOD OPENINGS			
24	3'-0" x 7'-0" x 1 3/8"	STOCK WOOD R.P. INTERIOR DOOR (4 PNL'S)			
25	3'-0" x 7'-0" x 1 3/8"	STOCK WOOD R.P. INTERIOR DOOR (4 PNL'S)			

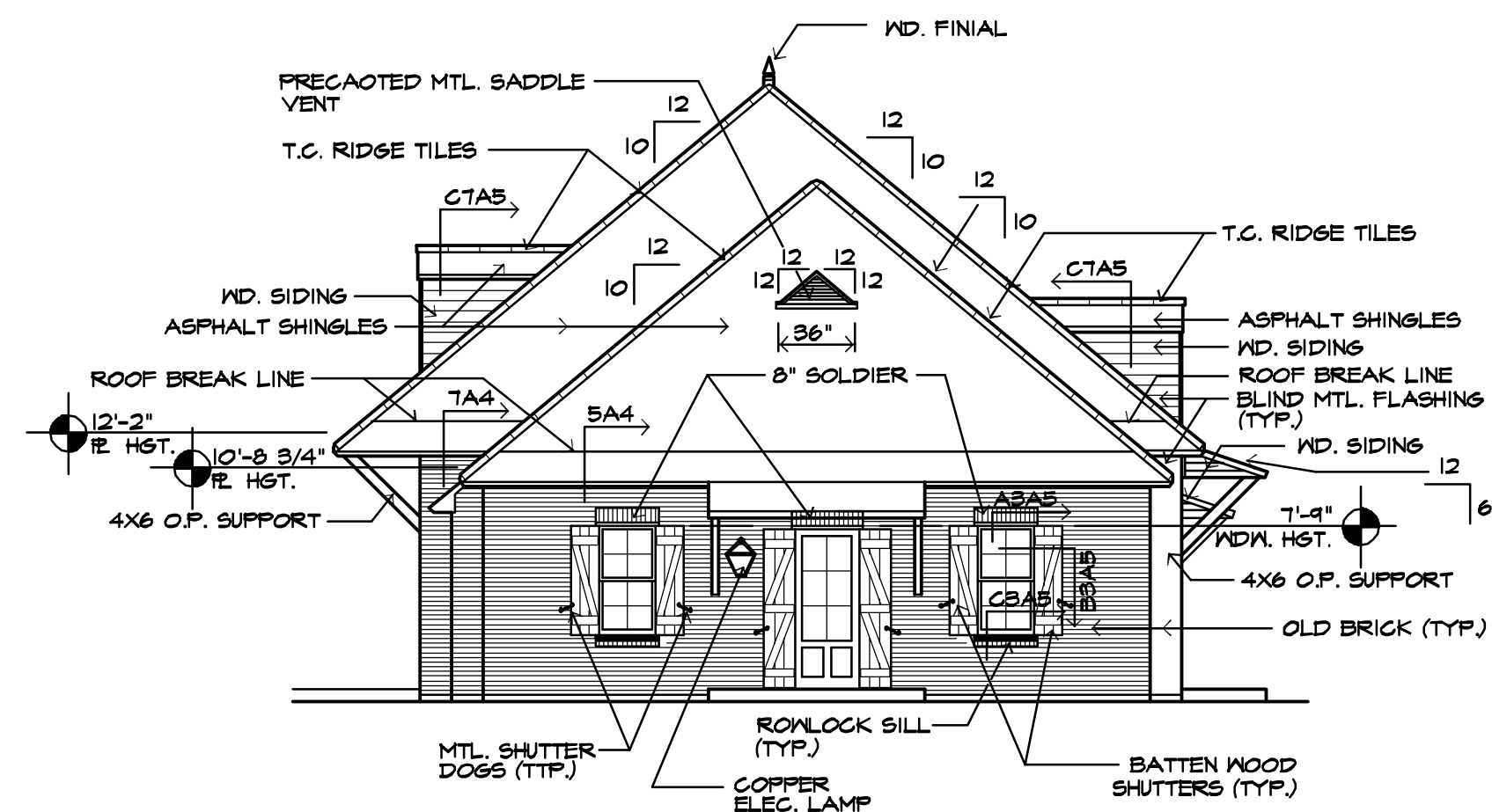




1 REAR ELEVATION  
1/8" = 1'-0"



2 SIDE ELEVATION  
1/8" = 1'-0"



3 SIDE ELEVATION  
1/8" = 1'-0"

4 ROOF EDGE DETAIL  
1" = 1'-0"

5 ROOF EDGE DETAIL  
1" = 1'-0"

6 ROOF EDGE DETAIL  
1" = 1'-0"

7 ROOF EDGE DETAIL  
1" = 1'-0"

8 BUILDING SECTION  
1/8" = 1'-0"

9 BUILDING SECTION  
1/8" = 1'-0"

10 BUILDING SECTION  
1/8" = 1'-0"

11 BUILDING SECTION  
1/8" = 1'-0"

NEW OFFICE BUILDING  
for  
**LINCOLN FINANCIAL ADVISORS**  
Building 9  
One Oak Square, Baton Rouge, Louisiana

**COCKFIELD • JACKSON**  
**Architects**  
A LIMITED LIABILITY COMPANY

6717 Perkins Road Baton Rouge, LA 70808 (504) 761-1680

Date  
October 20, 1997  
Drawn  
jcg  
Checked  
TLC  
Job Number  
54-97  
Sheet

**A4**