

1551 ROSA PARKS BLVD.
DETROIT, MICHIGAN

INDUSTRIAL FOR LEASE
6,000 – 28,274 Square Feet



**SIGNATURE
ASSOCIATES**
KNOW SIGNATURE | KNOW RESULTS



PROPERTY FEATURES

- 6,000 – 28,274 square feet available
- 3,808 square feet office
- 15'8" clear height
- (2) 12' x 10', (1) 12' x 12', (1) 14' x 14' grade level doors
- Situated on 2.91 acre site that allows for ample parking
- Lease Rate: \$7.00/sq ft. G+U



For more information, please contact:

SCOTT ELLIOTT
(248) 948 4182
sellott@signatureassociates.com

CHRIS MONSOUR
(248) 948 0107
cmonsour@signatureassociates.com

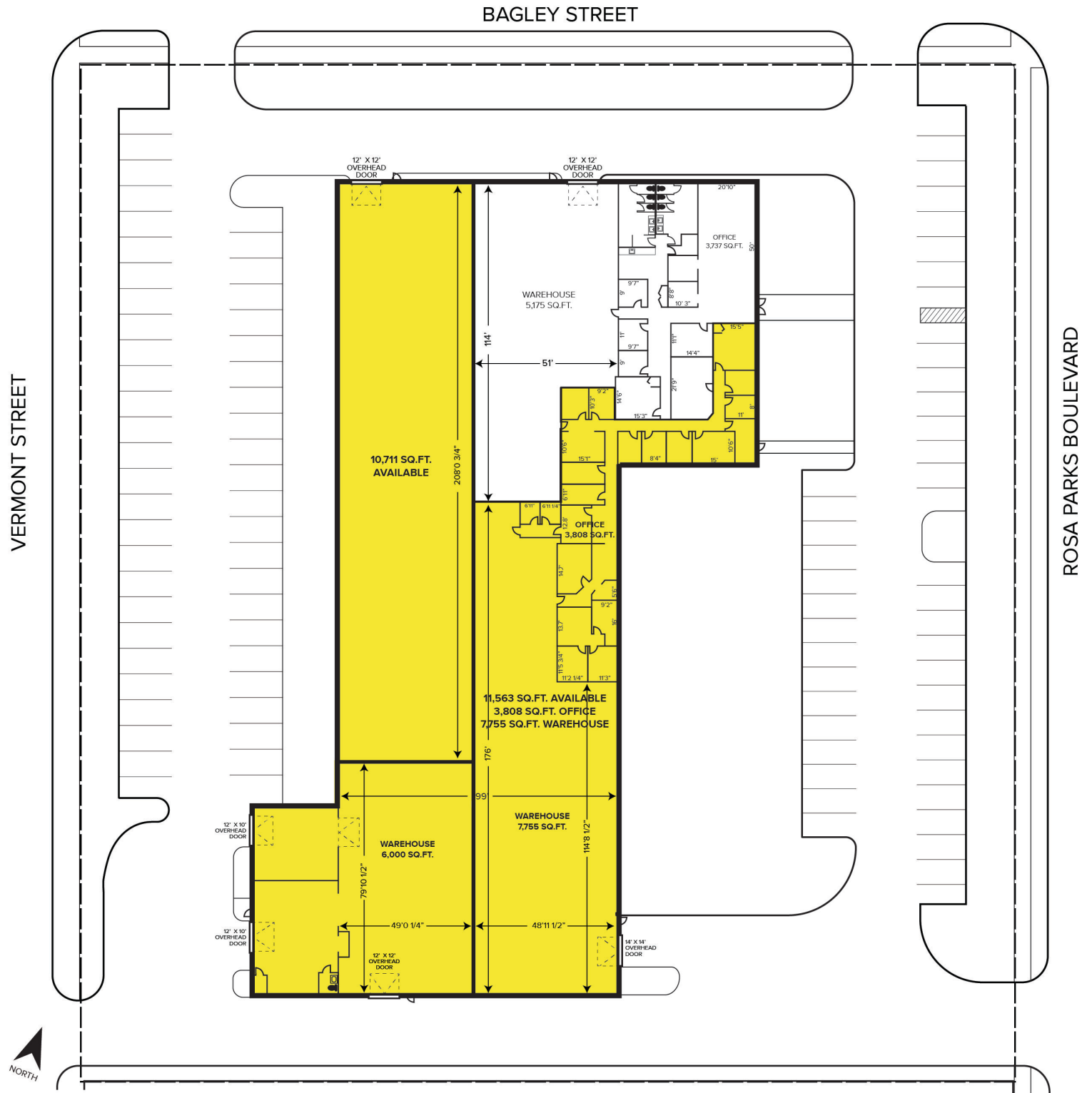
SIGNATURE ASSOCIATES
One Towne Square, Suite 1200
Southfield, MI 48076
www.signatureassociates.com

1551 Rosa Parks Boulevard – Detroit, Michigan

Industrial For Lease

6,000 – 28,274
Square Feet
AVAILABLE

Site Plan



For more information, please contact:

SCOTT ELLIOTT
(248) 948 4182
sellott@signatureassociates.com

CHRIS MONSOUR
(248) 948 0107
cmonsour@signatureassociates.com

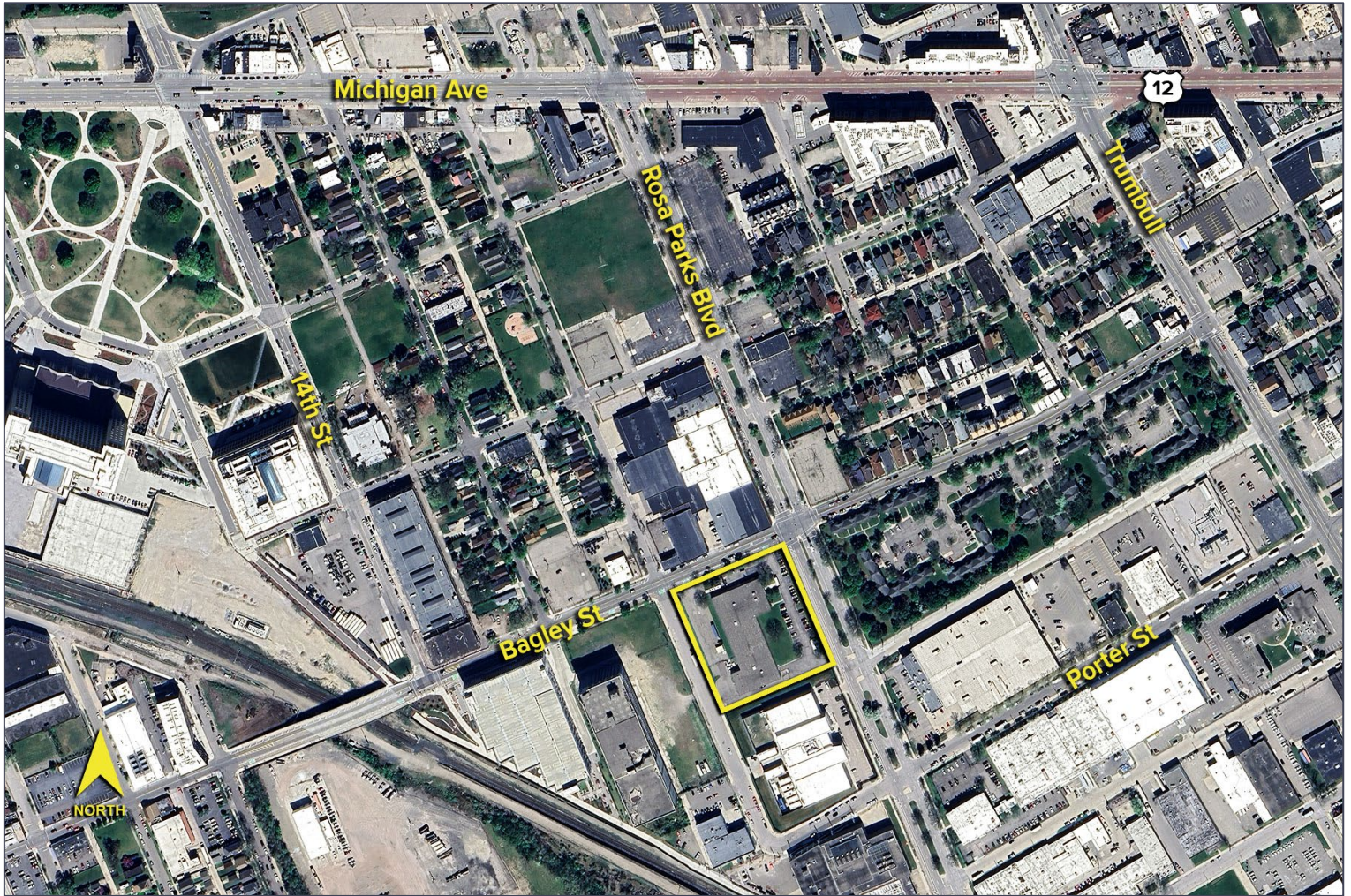
SIGNATURE ASSOCIATES
One Towne Square, Suite 1200
Southfield, MI 48076
www.signatureassociates.com

1551 Rosa Parks Boulevard – Detroit, Michigan

Industrial For Lease

6,000 – 28,274
Square Feet
AVAILABLE

Aerial



For more information, please contact:

SCOTT ELLIOTT
(248) 948 4182
sellott@signatureassociates.com

CHRIS MONSOUR
(248) 948 0107
cmonsour@signatureassociates.com

SIGNATURE ASSOCIATES
One Towne Square, Suite 1200
Southfield, MI 48076
www.signatureassociates.com