

AVAILABLE FOR LEASE

3900 Merton Dr.

NORTH HILLS PROFESSIONAL PARK



Welcome to North Hills Professional Park, offering a wide range of office and medical office space. The property is conveniently located off Six Forks Rd, neighboring the North Hills Shopping districts.

PROPERTY HIGHLIGHTS

- Easy access to the beltline and Six Forks
- Ample parking for patrons and staff
- Walking distance to North Hills
- Comfortable space with lobby area

CONTACT

Tyler Christensen, Broker

(C) 828.999.9459

tchristensen@atlasstark.com

Floorplans



SUITE

SIZE

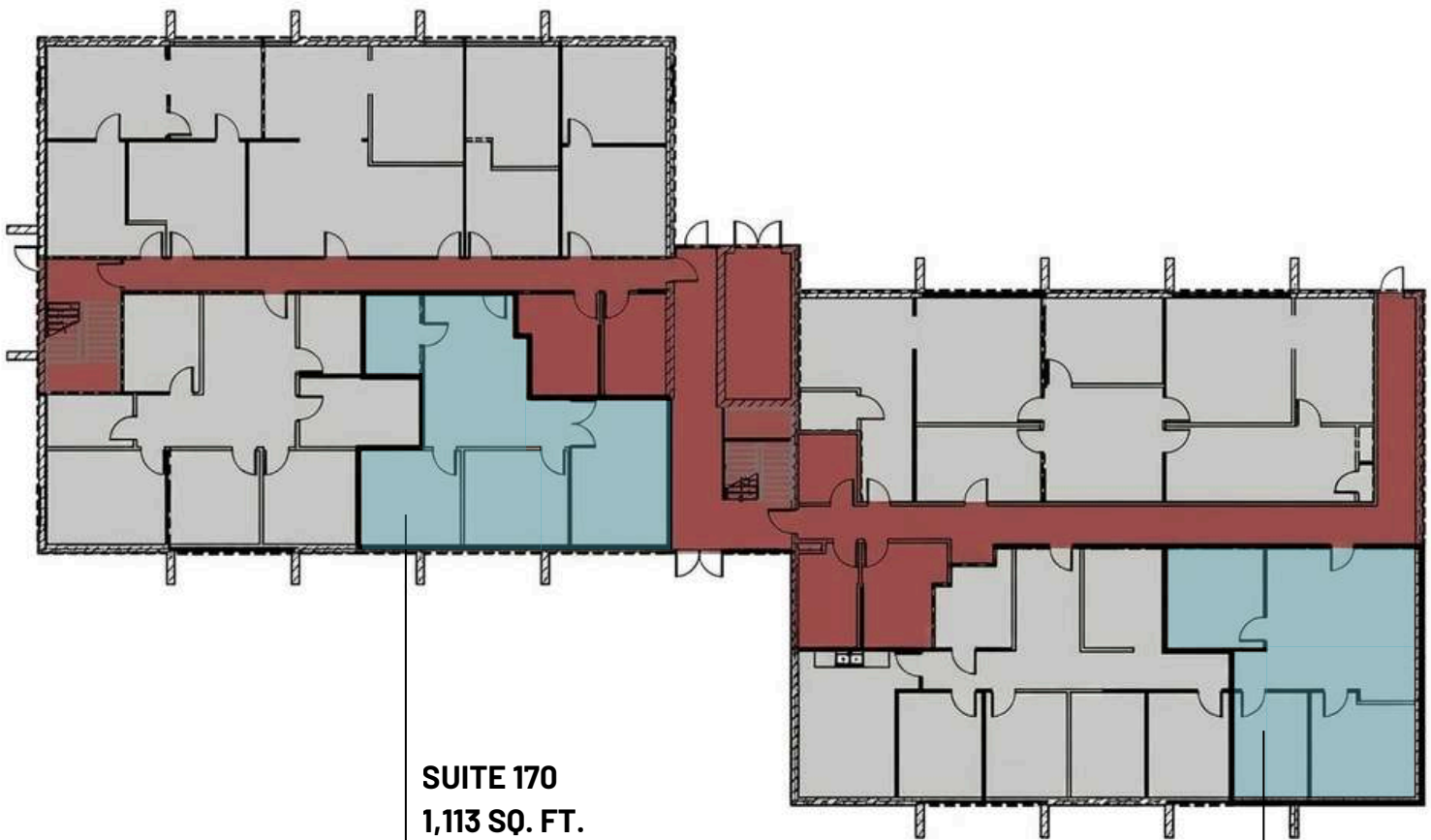
Suite 110

1,148 SF

Suite 170

1,113 SF

Rate: \$26.50 SF



SUITE 170
1,113 SQ. FT.

SUITE 110
1,148 SQ. FT.

Floorplans

SUITE

SIZE

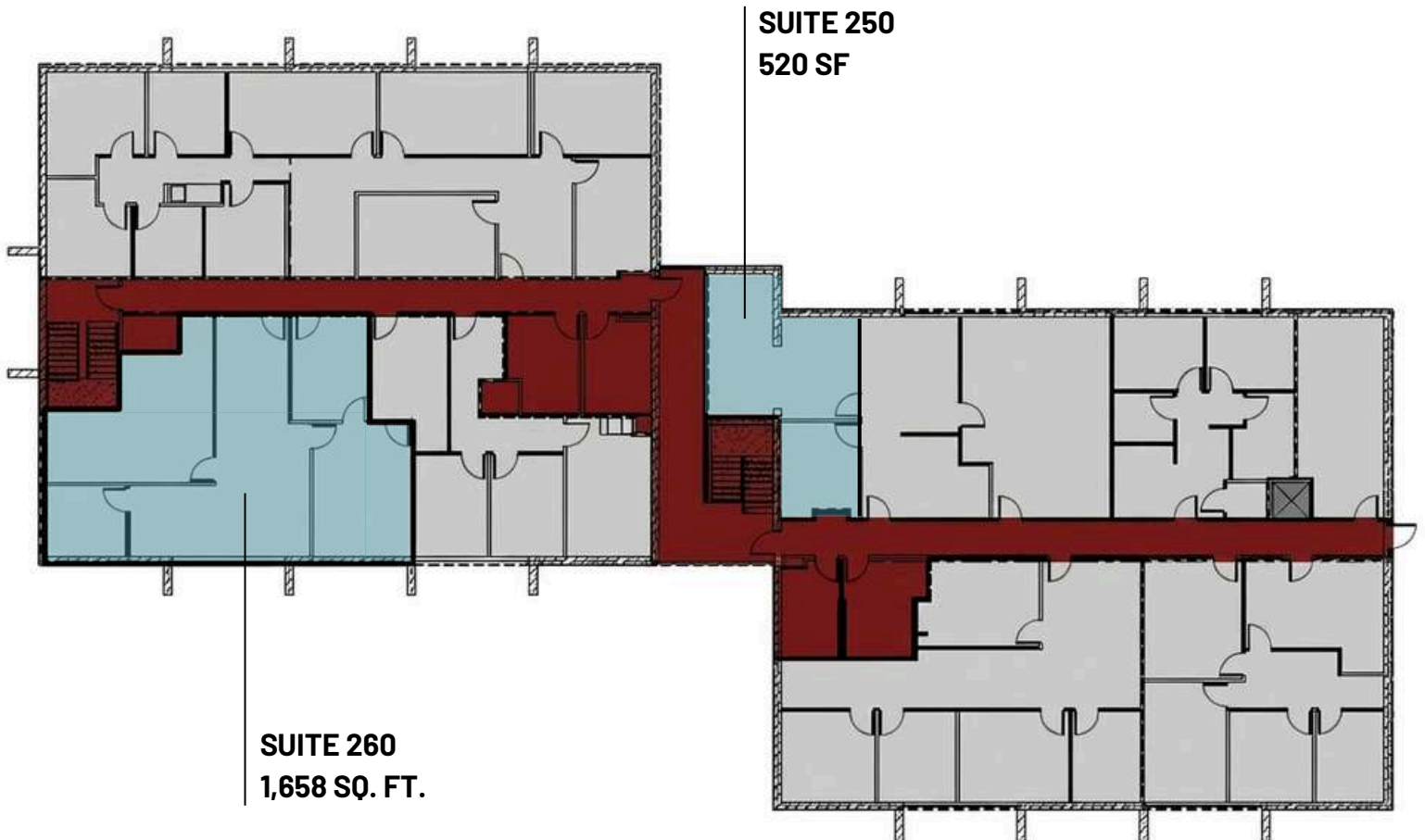
Suite 250

520 SF

Suite 260

1,658 SF

Rate: \$26.50 SF



NEIGHBORHOOD OVERVIEW



LOCAL AMENITIES





CONTACT BROKER

Tyler Christensen, Broker
(C) 828.999.9459
tchristensen@atlasstark.com

1020 E Whitaker Mill Road, Suite 110
Raleigh, NC 27608



ATLAS STARK