

RETAIL SPACE

1976 BROADWAY

Southeast corner of West 67th Street and Broadway at Lincoln Square

UPPER WEST SIDE

NEW YORK | NY

**14,884
SF**
For Lease



RIPCO
REAL ESTATE

SPACE DETAILS

LOCATION

Southeast corner of West 67th Street and Broadway at Lincoln Square

SIZE

Ground Floor	7,337 SF*
Lower Level	7,547 SF
Total	14,884 SF

**Divisible; includes 545 SF usable loading dock*

FRONTAGE

Broadway	109 FT 3 IN
West 67th Street	65 FT

STATUS

Currently Banana Republic

CEILING HEIGHTS

Ground Floor	20 FT 1 IN
Lower Level	14 FT 6 IN

POSSESSION

August 2021

RENT

Upon request

TERM

Long term

NEIGHBORS

Apple, AMC Lincoln Square Theaters, Bed Bath & Beyond, Brooks Brothers, Century 21 Department Store, Chase Bank, Equinox, J Jill, Lululemon, Pottery Barn, Raymour & Flanigan, Zara

COMMENTS

Offers a highly visible corner location with the ability to merchandise Ground and Lower Level
Features stairs and passenger elevator in place and dedicated off-street loading bay

BUSINESS DRIVERS

Central Park, Lincoln Center, Julliard School, 1 Train at 66th Street

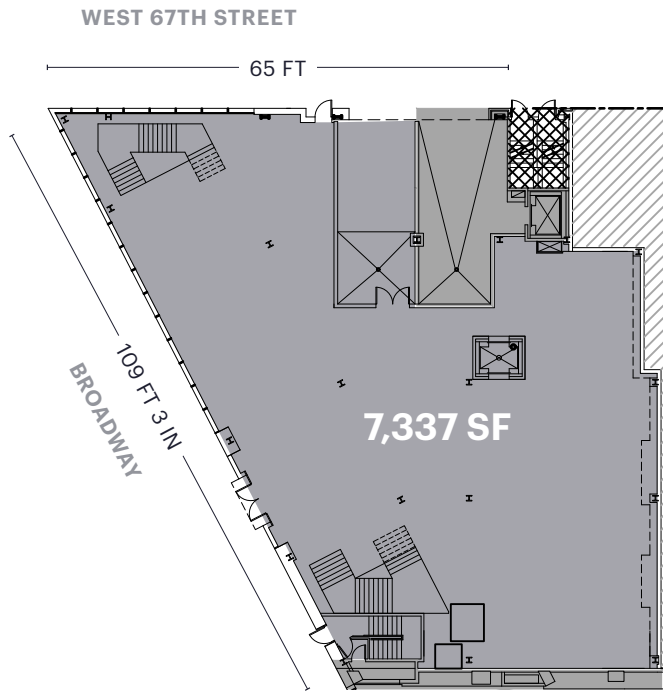
TRANSPORTATION

2018 Ridership Report

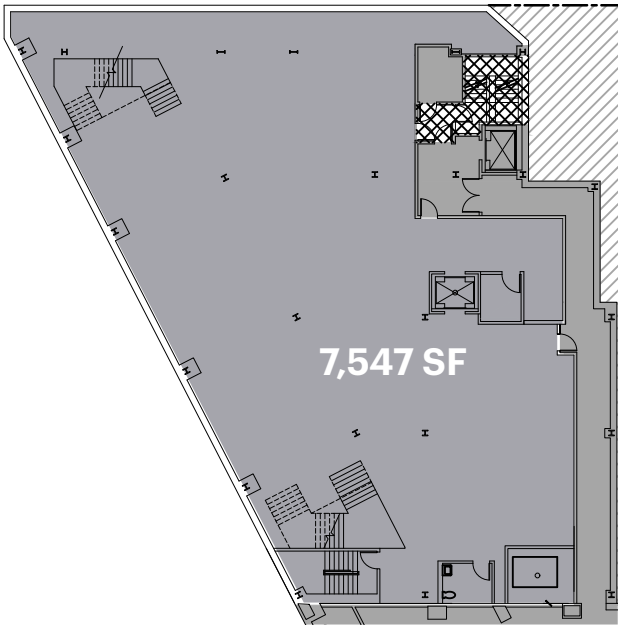
66th Street - Lincoln Center

Annual	7,606,975
Weekday	24,064
Weekend	27,001

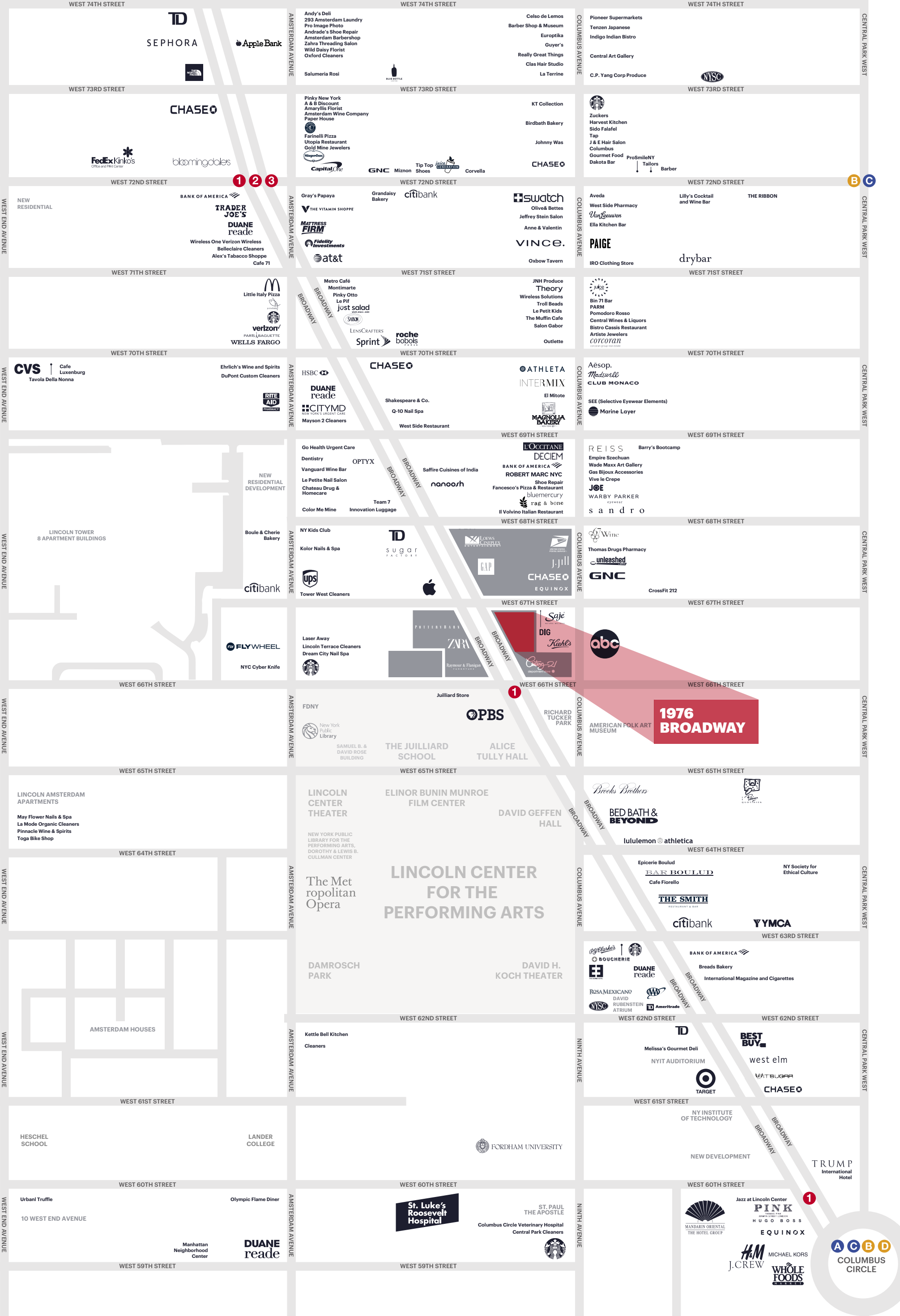
GROUND FLOOR



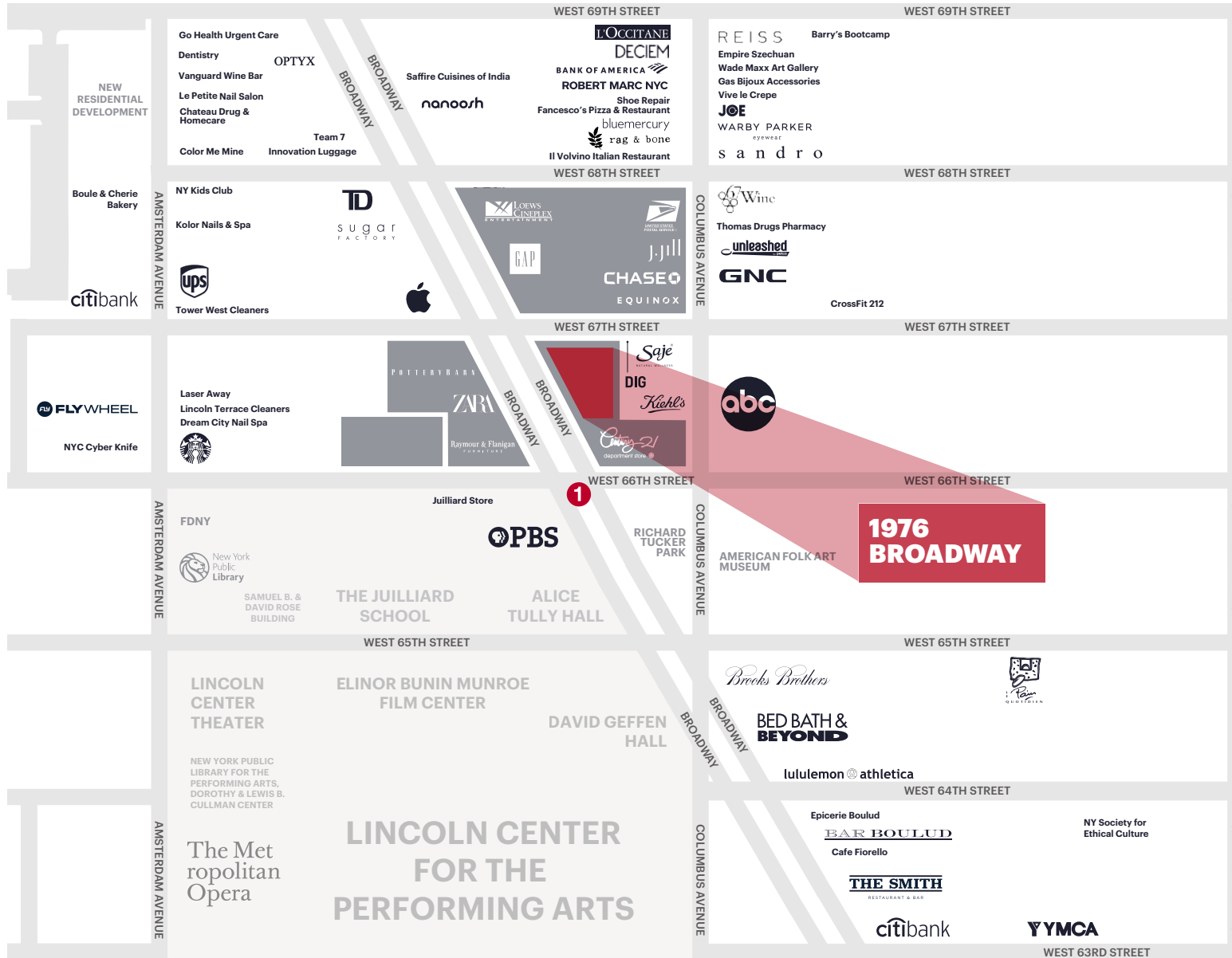
LOWER LEVEL







AREA RETAIL



CONTACT EXCLUSIVE AGENTS

GENE SPIEGELMAN

gspiegelman@ripcony.com
212.219.7045

DOUG KLEIMAN

dkleiman@ripcony.com
646.827.9980

+ Coming Soon

Millennium Partners Lincoln Square Portfolio

RIPCO
REAL ESTATE

150 East 58th Street
15th Floor
New York, NY 10155
212.750.6565

Please visit us at ripcony.com for more information

This information has been secured from sources we believe to be reliable, but we make no representations as to the accuracy of the information. References to square footage are approximate. Buyer must verify the information and bears all risk for any inaccuracies.

MP MILLENNIUM PARTNERS