

\$1600 NNN
General office space



726 S 1600 W, Suite 102, Mapleton Utah 84664



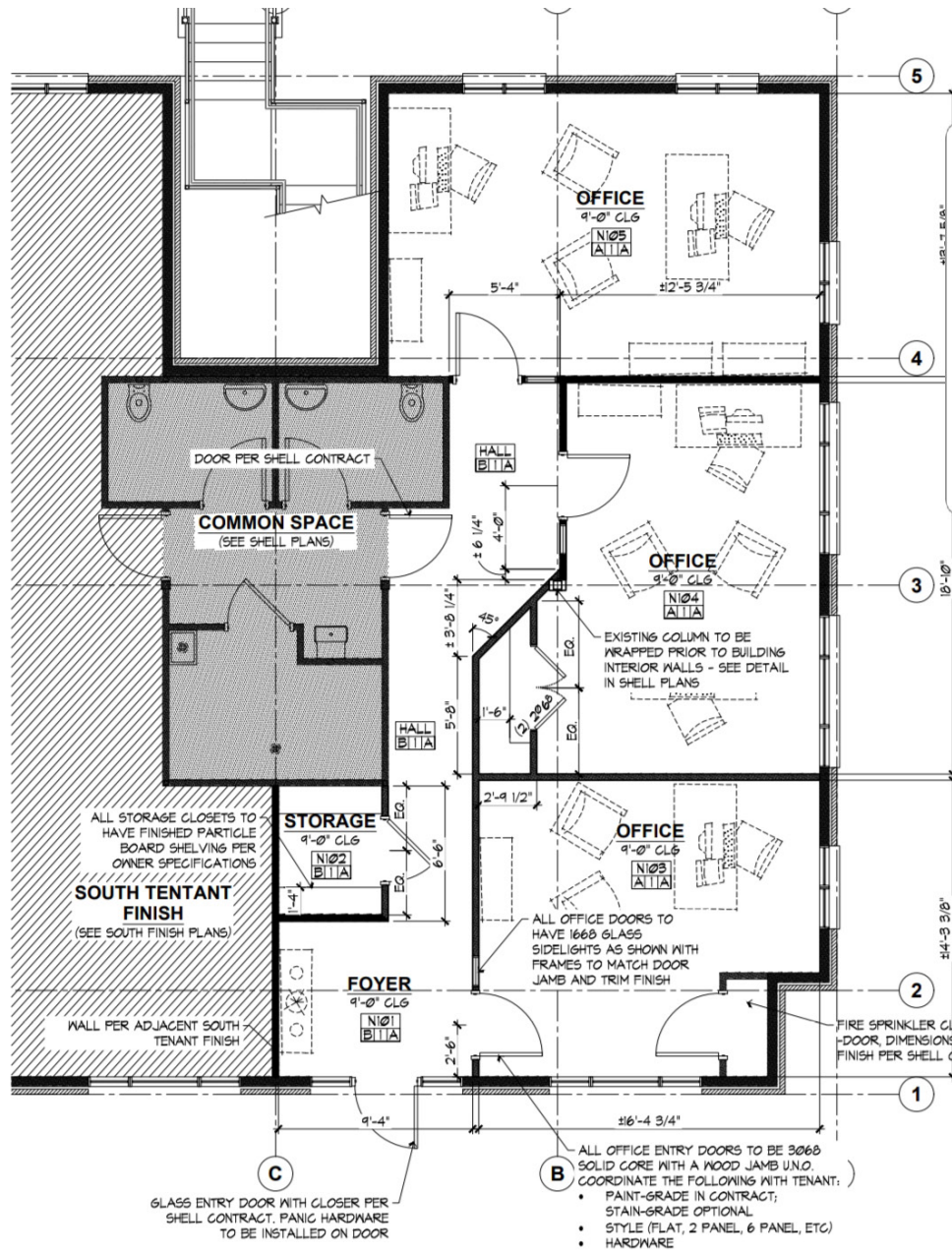
Property Information

- New beautiful building
- Proposed buildout suits many general office users
- 1,275 sf, all on ground level
- Excellent location within the Harvest Park development in Mapleton

Aaron Cook, MBA
801-787-7255
Aaron@coreutah.com

FLOOR PLANS

726 S 1600 W, Suite 102, Mapleton Utah 84660



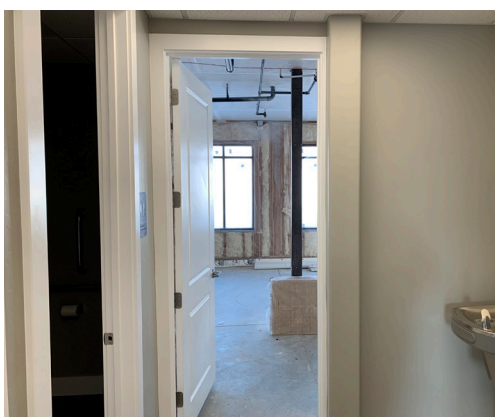
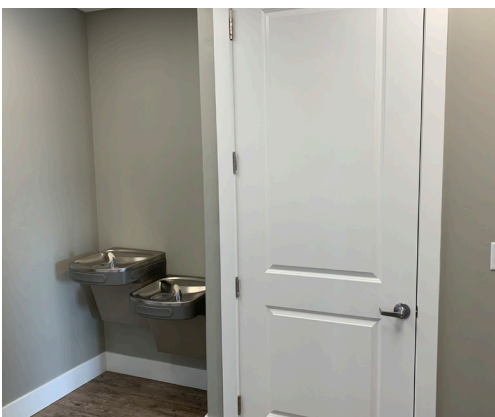
TENANT INSTALLATION - NORTH

1/4" = 1'-0"
(1/8" = 1'-0" ON 11x17 PAPER)

*Layouts are approximations only

HIGHLIGHTS

726 S 1600 W, Suite 102, Mapleton Utah 84660

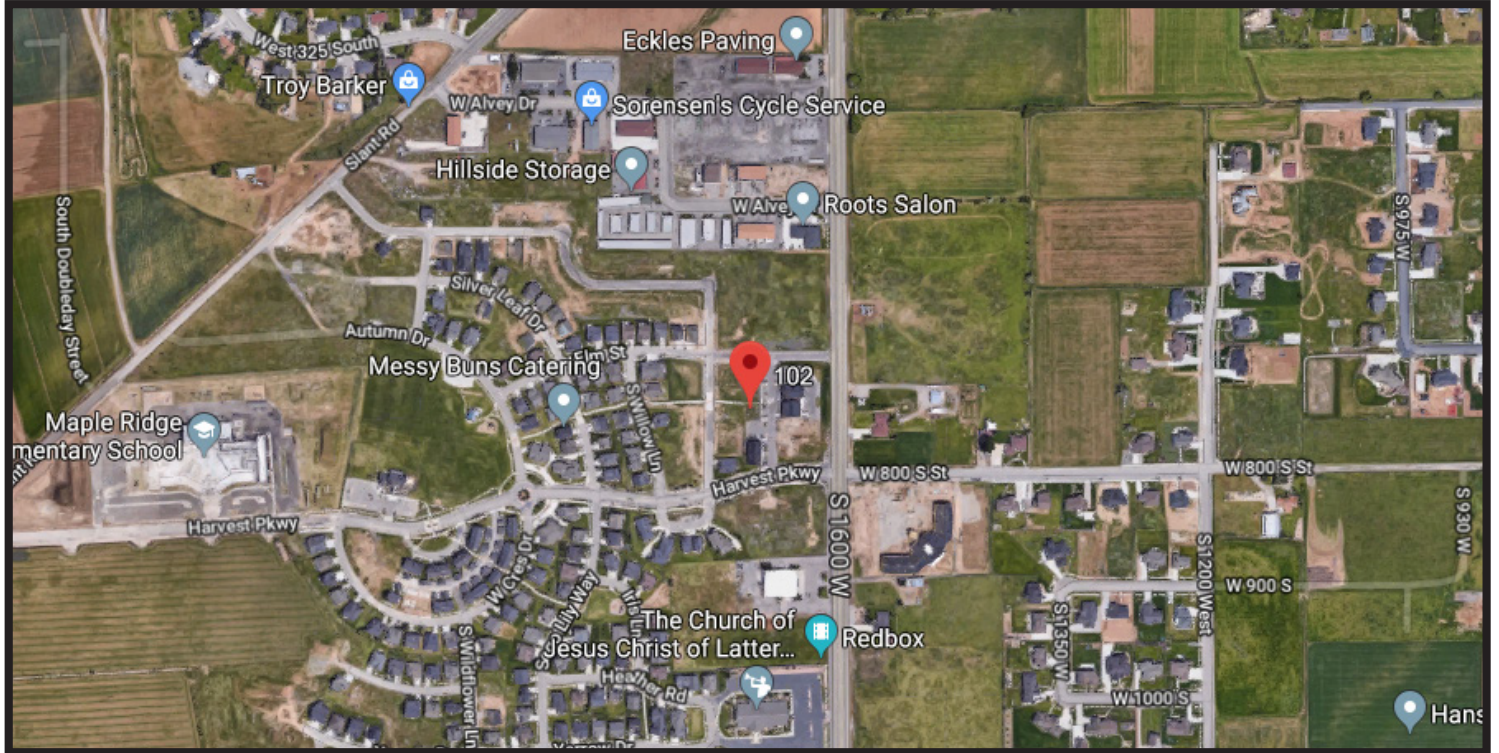


Aaron Cook, MBA
801-787-7255
Aaron@coreutah.com



LOCATIONS

726 S 1600 W, Suite 102, Mapleton Utah 84660



Aaron Cook, MBA
801-787-7255
Aaron@coreutah.com

