



**KnightFrank.com**



## **Proposed New Retail Scheme**

# London Road, Sheffield

## To Let

- Sought after South West Sheffield address.
- Prominent main road frontage on to London Road (A61).
- Scheme includes:
  - Ground floor retail units in main building of 2,000 – 10,000 sq ft
  - Detached single storey unit of 1,765 sq ft
  - 22 apartments on the upper floors
- Opportunity to influence design and layout as the scheme is not yet built.
- Rent – on application.

# 0114 2729750

Knight Frank LLP, Fountain Precinct, 7<sup>th</sup> Floor Balm Green, Sheffield, S1 2JA  
email: [sheffield@knightfrank.com](mailto:sheffield@knightfrank.com)



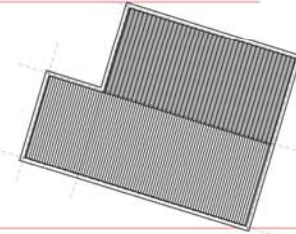
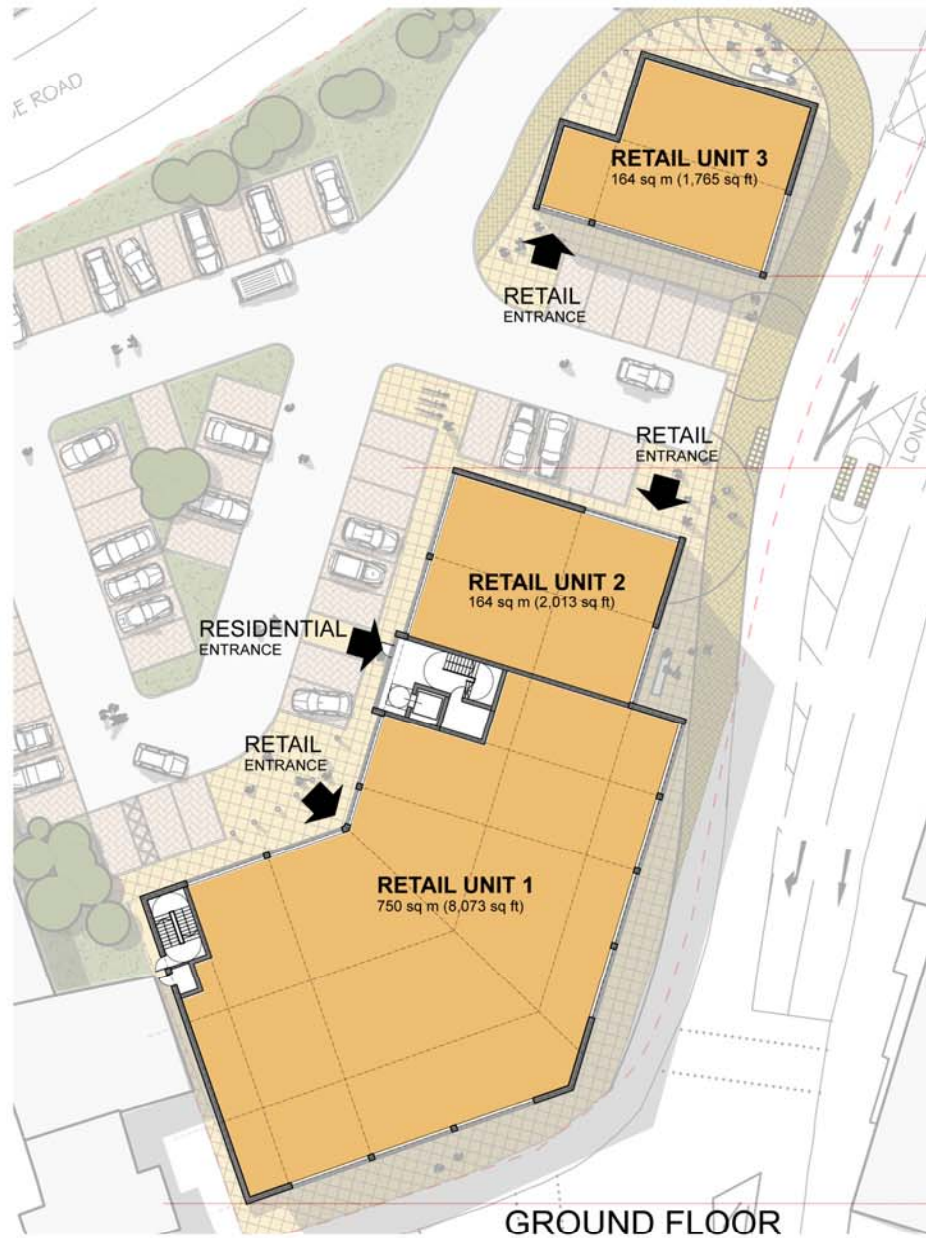
# LONDON ROAD SHEFFIELD



# LOCATION PLAN



# SITE PLAN



- 1. 1 BED - 39 sq m (424 sq ft)
- 2. 2 BED - 62 sq m (666 sq ft)
- 3. 1 BED - 39 sq m (424 sq ft)
- 4. 2 BED - 62 sq m (666 sq ft)
- 5. 2 BED - 70 sq m (750 sq ft)
- 6. 2 BED - 62 sq m (666 sq ft)
- 7. 1 BED - 53 sq m (573 sq ft)
- 8. 1 BED - 52 sq m (560 sq ft)
- 9. 2 BED - 62 sq m (666 sq ft)
- 10. 1 BED - 39 sq m (424 sq ft)
- 11. 2 BED - 62 sq m (666 sq ft)

UPPER FLOOR

# FLOOR PLANS



**AERIAL VIEW**