

# INDUSTRIAL WAREHOUSE

2522 109TH STREET  
GRAND PRAIRIE, TX

## PROPERTY INFORMATION

Located at the Southeast corner of 109th Street and Post & Paddock Street. Close proximity from DFW Airport as well as access from Highway 360 and is between Downtown Fort Worth and Downtown Dallas.

**SIZE:** 27,488 SF Warehouse

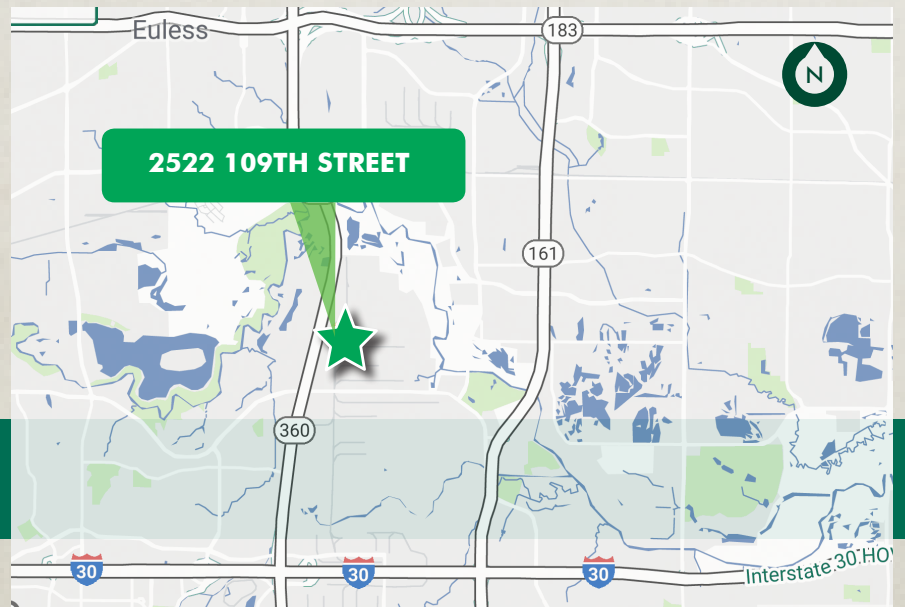
**LAND:** Approximately 1.83 acres

**YEAR BUILT:** 1991

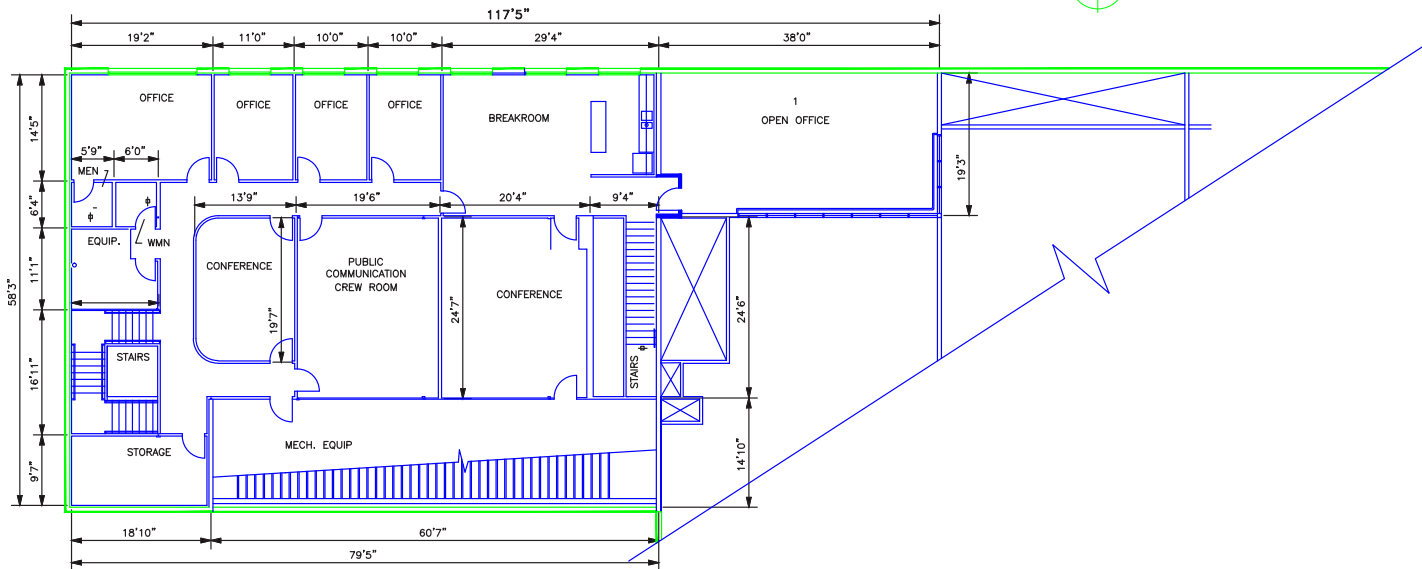
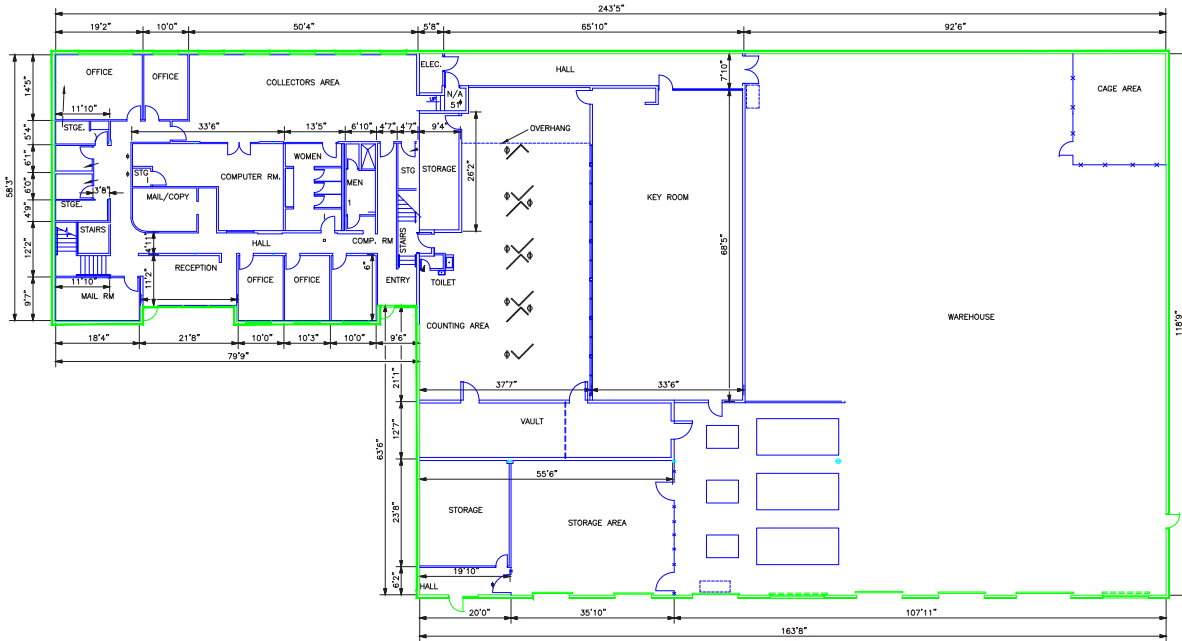
**CEILING HEIGHTS:** 18'

**TRUCK LOADING:** 6 Grade Level Doors  
2 Docks

**FENCED LOT**



# SITE PLAN



## STEVE KOLDYKE

Senior Vice President  
214 979 6381  
steve.koldyke@cbre.com

## KACY JONES

Senior Vice President  
214 979 6151  
kacy.jones@cbre.com

## BRIAN GILCHRIST

First Vice President  
214 979 6394  
brian.gilchrist@cbre.com

© 2019 CBRE, Inc. All rights reserved. This information has been obtained from sources believed reliable, but has not been verified for accuracy or completeness. You should conduct a careful, independent investigation of the property and verify all information. Any reliance on this information is solely at your own risk.