



181 Fremont

35th & 36th Floor Sublease

RSF: 22,045 across both floors

Date Available: 30-60 Days

Term: 2-3 Years

NEWMARK

AARON GILLESPIE

Senior Managing Director

720-495-7735

aaron.gillespie@nrmk.com

CA RE LIC #01971974

WILL MALLEN

Associate Director

415-310-8108

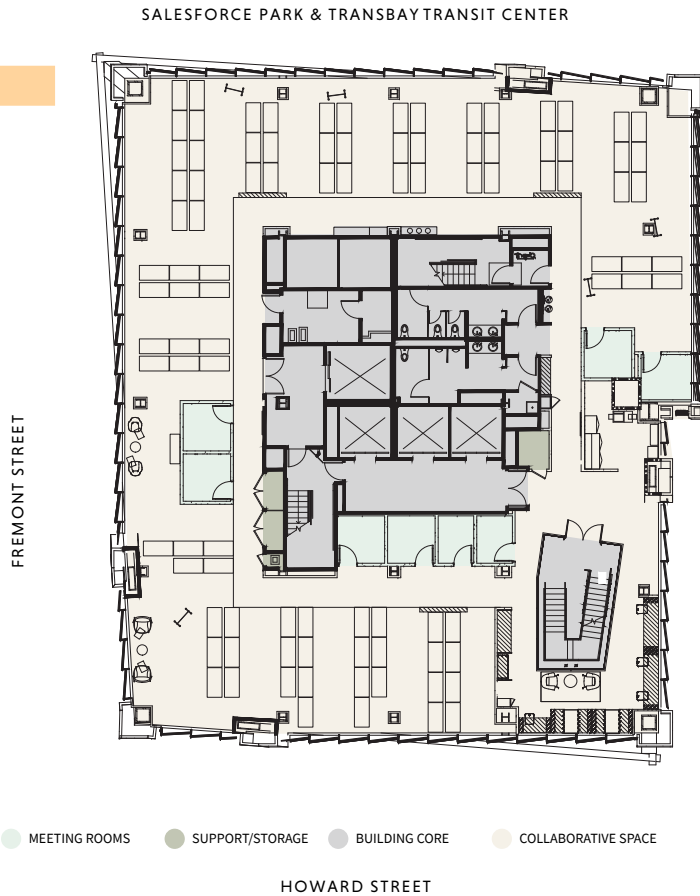
william.mallen@nrmk.com

CA RE LIC #02162516

Suite Notes

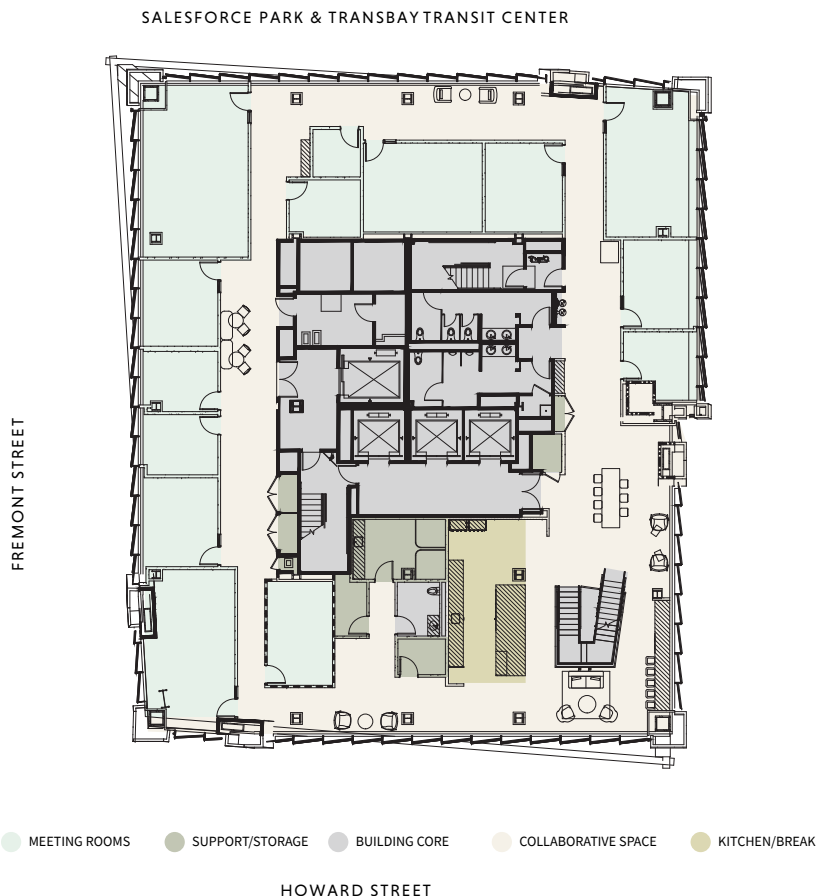
35TH FLOOR

Predominantly open plan office space with ~95 desks in place and eight (8) meeting rooms. There is a dramatic interconnecting staircase connecting the two floors.



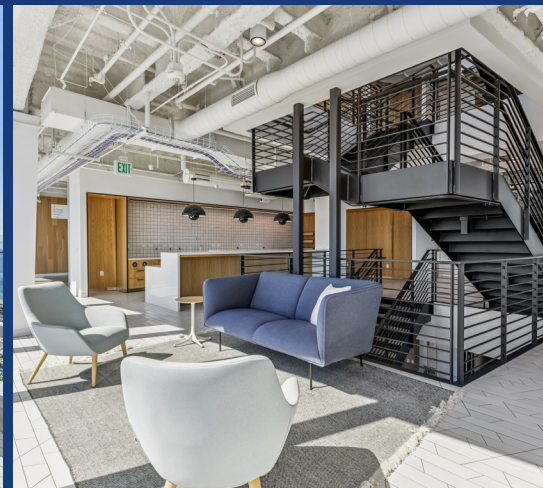
36TH FLOOR

Large kitchenette off of the elevator entrance to the suite with sweeping bay bridge views. There are fourteen (14) meeting rooms of various sizes on this floor including a boardroom and phone rooms.



Key Building Amenities

- Caltrain Shuttle (runs every 15 mins)
- Bike storage
- Day lockers & showers
- Event space & tenant conference center
- Andytown Coffee Roasters on-site
- Direct access to Salesforce Park



One Sansome St, Fl 41, San Francisco, CA 94104

The distributor of this communication is performing acts for which a real estate license is required. The information contained herein has been obtained from sources deemed reliable but has not been verified and no guarantee, warranty or representation, either express or implied, is made with respect to such information. Terms of sale or lease and availability are subject to change or withdrawal without notice. 11553239722 | 3/26

For more information:

AARON GILLESPIE
Senior Managing Director
720-495-7735
aaron.gillespie@nrmk.com
CA RE LIC #01971974

WILL MALLEN
Associate Director
415-310-8108
william.mallen@nrmk.com
CA RE LIC #02162516

NEWMARK