

FOR SALE

OFFICE BUILDING



652 New Street
Downtown Macon, Bibb County, Georgia 31201



- Located downtown Macon New Street @ Pine Street; 100 yards from Pine Street entrance to Medical Center of Central Georgia, Navicent Health
- 1,900± SF Professional Office Building
 - Lobby / Reception Area
 - Six private offices
 - Break room
 - Two single fixture restrooms (one handicap accessible)
 - Storage available under building
 - VCT tile flooring throughout
 - 10' ceilings; 2' X 2' acoustical drop ceiling
 - Chair rail and beaded board wainscot
 - Hardwood doors
 - Burglar alarm system
- Built in 1975; totally renovated in 1998
- .09± Acres
- On site parking for six vehicles plus on street parking. High rise parking garage next door available to the public.
- All public utilities on site.
- Zoned CBD-1
- 2015 Property Tax Bill: \$1,762.94

SALES PRICE: \$330,000

FOR MORE DETAILS CONTACT:

Created 4/22/16

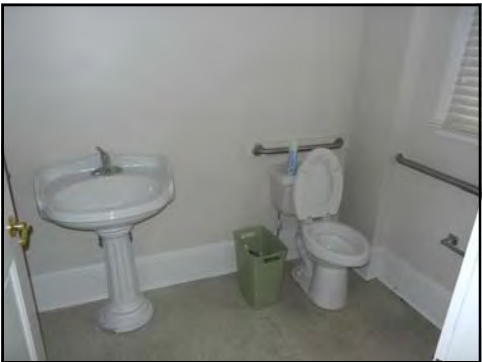
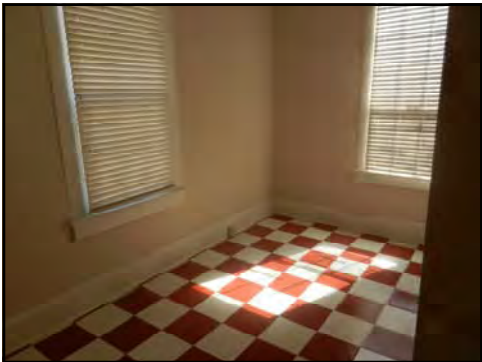
PATRICK BARRY - EXCLUSIVE AGENT
pbarry@cbcworldwide.com
Coldwell Banker Commercial Eberhardt & Barry Inc.

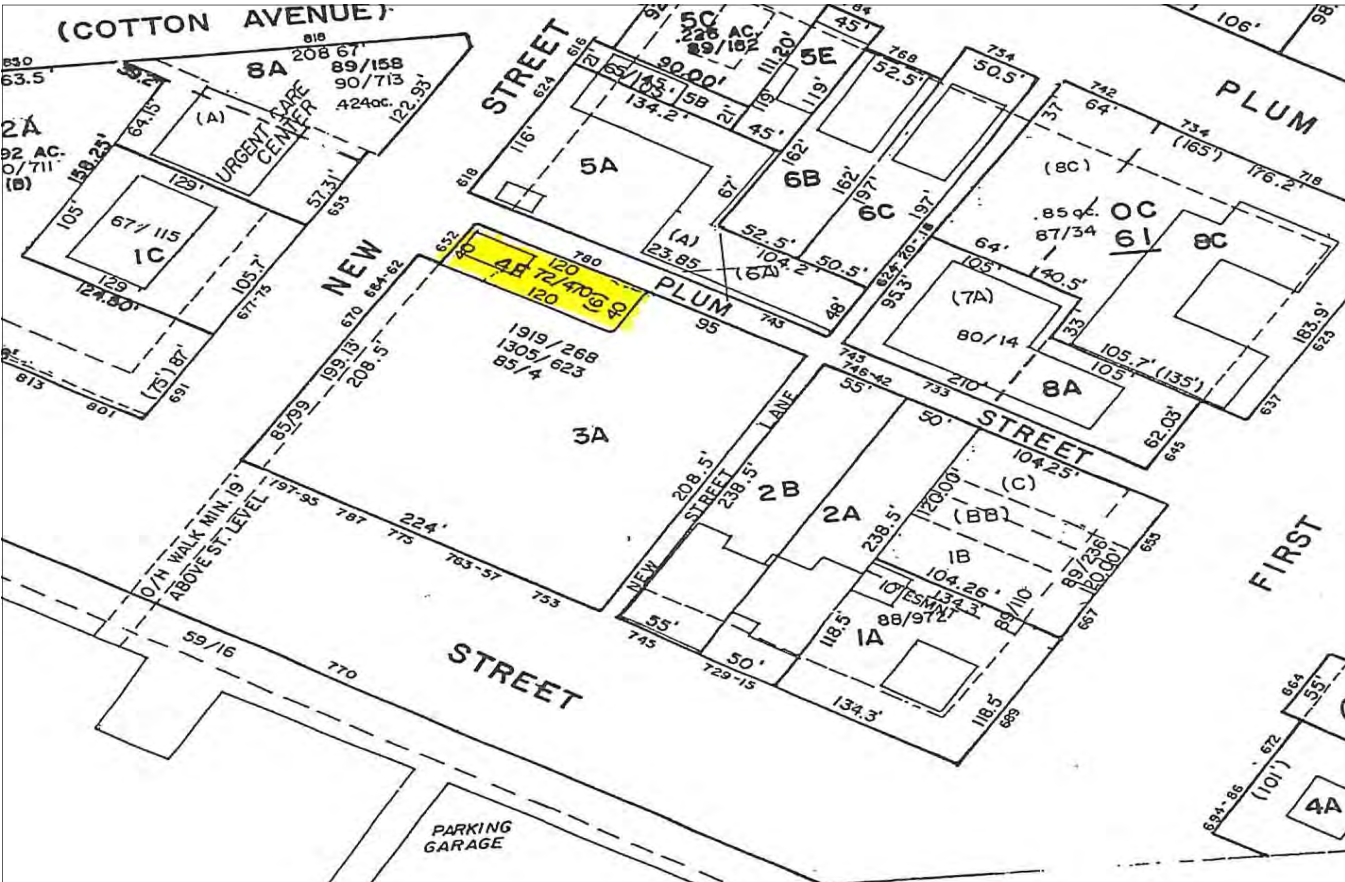
Main 478-746-8171 **Toll Free** 800-926-0990
Fax 478-746-1362 **Cell** 478-718-1806

990 Riverside Drive
Macon, GA 31201

Coldwellbankercommercialeb.com

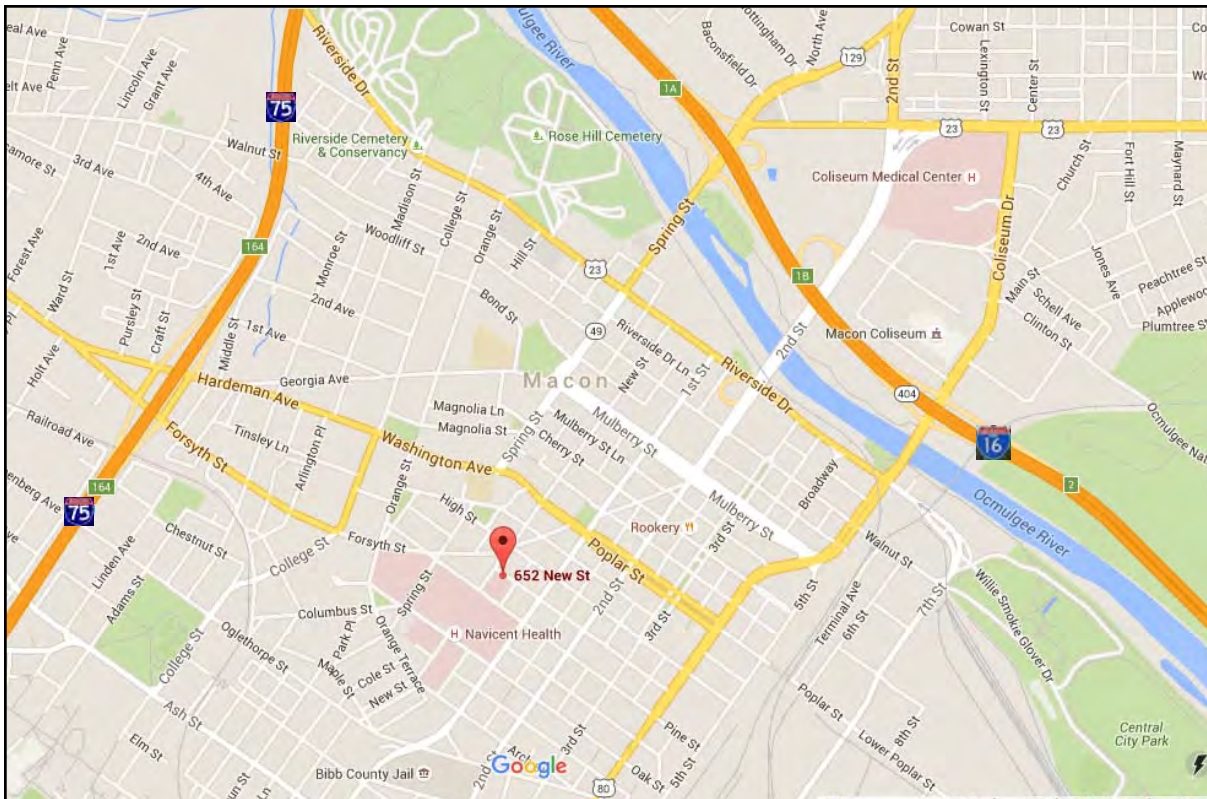
© 2016 Coldwell Banker Real Estate LLC, dba Coldwell Banker Commercial Affiliates. All Rights Reserved. Coldwell Banker Real Estate LLC, dba Coldwell Banker Commercial Affiliates fully supports the principles of the Equal Opportunity Act. Each Office is Independently Owned and Operated. Coldwell Banker Commercial and the Coldwell Banker Commercial Logo are registered service marks owned by Coldwell Banker Real Estate LLC, dba Coldwell Banker Commercial Affiliates. The information contained herein has been obtained from sources believed to be reliable; however, you are advised to verify this information through personal or professional inspections.





652 New Street - Macon, GA 31201

MAPS





Demographic and Income Profile

Bibb County, GA 5
 Bibb County, GA (13021)
 Geography: County

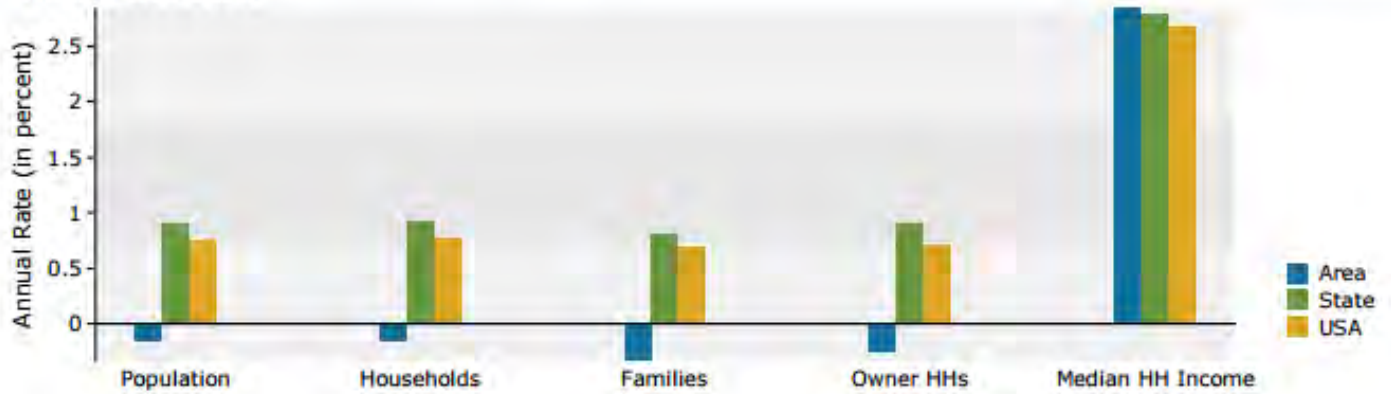
Prepared by Esri

Summary	Census 2010		2015		2020	
Population	155,547		154,314		152,905	
Households	60,295		59,879		59,332	
Families	38,714		37,947		37,298	
Average Household Size	2.48		2.47		2.47	
Owner Occupied Housing Units	33,537		31,146		30,742	
Renter Occupied Housing Units	26,758		28,733		28,590	
Median Age	35.5		36.3		37.2	
Trends: 2015 - 2020 Annual Rate	Area		State		National	
Population	-0.18%		0.90%		0.75%	
Households	-0.18%		0.93%		0.77%	
Families	-0.34%		0.80%		0.69%	
Owner HHs	-0.26%		0.90%		0.70%	
Median Household Income	2.85%		2.80%		2.66%	
Households by Income	2015			2020		
	Number	Percent	Number	Percent	Number	Percent
<\$15,000	13,679	22.8%	13,266	22.4%		
\$15,000 - \$24,999	8,121	13.6%	6,207	10.5%		
\$25,000 - \$34,999	7,015	11.7%	6,171	10.4%		
\$35,000 - \$49,999	7,470	12.5%	7,207	12.1%		
\$50,000 - \$74,999	8,965	15.0%	8,805	14.8%		
\$75,000 - \$99,999	6,196	10.3%	7,311	12.3%		
\$100,000 - \$149,999	5,296	8.8%	6,530	11.0%		
\$150,000 - \$199,999	1,461	2.4%	1,939	3.3%		
\$200,000+	1,676	2.8%	1,896	3.2%		
Median Household Income	\$36,714		\$42,256			
Average Household Income	\$55,641		\$63,179			
Per Capita Income	\$21,939		\$24,874			
Population by Age	Census 2010		2015		2020	
	Number	Percent	Number	Percent	Number	Percent
0 - 4	11,465	7.4%	10,709	6.9%	10,483	6.9%
5 - 9	10,931	7.0%	10,657	6.9%	9,969	6.5%
10 - 14	10,833	7.0%	10,435	6.8%	10,339	6.8%
15 - 19	11,777	7.6%	11,060	7.2%	10,767	7.0%
20 - 24	11,537	7.4%	11,430	7.4%	10,672	7.0%
25 - 34	20,188	13.0%	20,400	13.2%	19,854	13.0%
35 - 44	19,047	12.2%	18,499	12.0%	18,927	12.4%
45 - 54	21,631	13.9%	19,305	12.5%	17,956	11.7%
55 - 64	18,449	11.9%	19,592	12.7%	18,961	12.4%
65 - 74	10,462	6.7%	12,840	8.3%	14,806	9.7%
75 - 84	6,602	4.2%	6,472	4.2%	7,176	4.7%
85+	2,625	1.7%	2,915	1.9%	2,995	2.0%
Race and Ethnicity	Census 2010		2015		2020	
	Number	Percent	Number	Percent	Number	Percent
White Alone	67,199	43.2%	63,238	41.0%	59,133	38.7%
Black Alone	81,116	52.1%	82,984	53.8%	84,625	55.3%
American Indian Alone	332	0.2%	319	0.2%	329	0.2%
Asian Alone	2,531	1.6%	2,865	1.9%	3,246	2.1%
Pacific Islander Alone	120	0.1%	120	0.1%	126	0.1%
Some Other Race Alone	2,014	1.3%	2,324	1.5%	2,660	1.7%
Two or More Races	2,235	1.4%	2,464	1.6%	2,786	1.8%
Hispanic Origin (Any Race)	4,389	2.8%	5,216	3.4%	6,173	4.0%

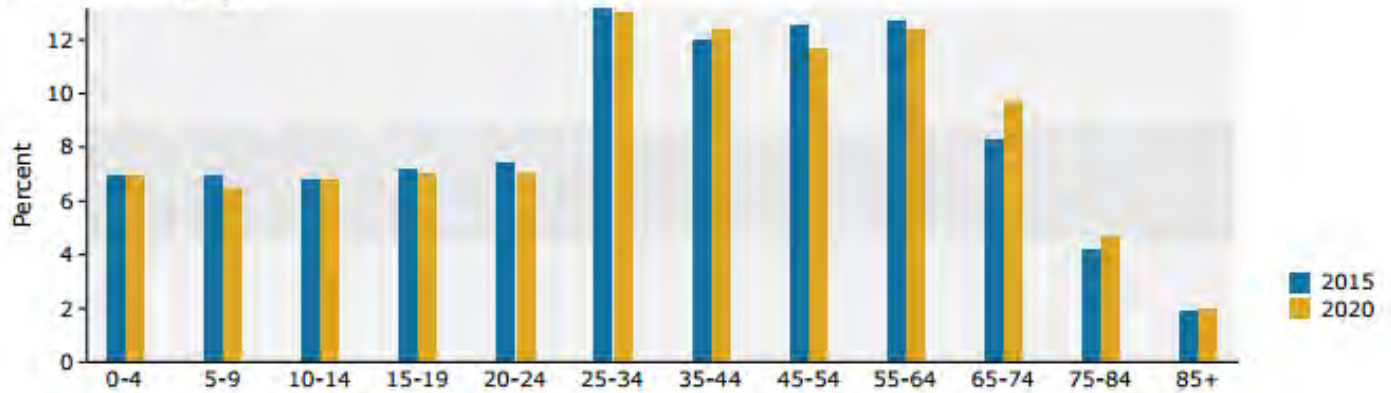
Data Note: Income is expressed in current dollars.

Source: U.S. Census Bureau, Census 2010 Summary File 1. Esri forecasts for 2015 and 2020.

Trends 2015-2020



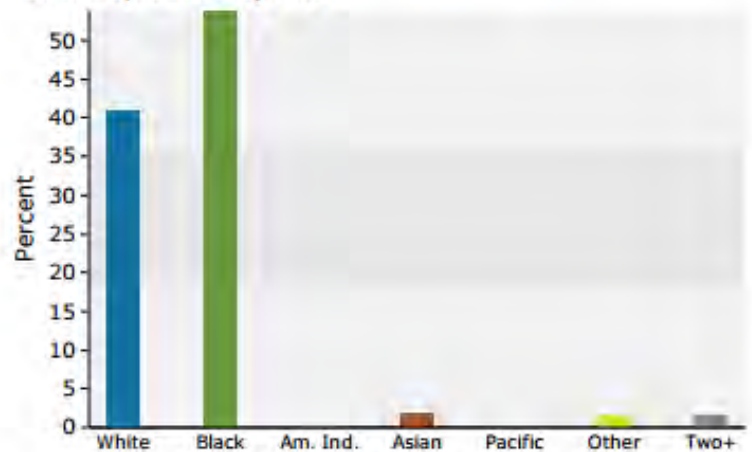
Population by Age



2015 Household Income



2015 Population by Race



2015 Percent Hispanic Origin: 3.4%

Source: U.S. Census Bureau, Census 2010 Summary File 1. Esri forecasts for 2015 and 2020.