



**MACKINTOSH, Inc.**  
COMMERCIAL BROKERAGE

**For Lease - \$14 PSF +NNN (\$3.72 PSF)  
1,594 SF with Mezzanine Office**

## **Office/Warehouse Condo For Lease Suite 105 - 1550 Mercantile Drive, Frederick, Md. 21703**



**1,594 SF Office / Warehouse Condo with Additional Large  
Open Office in the Mezzanine Level. 14 ft. ceilings.**

**[UNIT D – 5744 INDUSTRY LANE \(Click Here for Video Walkthrough\)](#)**

**Quick Access to Interstate 270 & Interstate 70.  
Networked Area with Phone Jacks Throughout  
10' x 10' Drive-In Door in Warehouse Area,  
Contact Listing Agent for More Information.**

---

*All information deemed reliable but not guaranteed.*

**FOR ADDITIONAL INFORMATION CONTACT:**

**Nancy Green - Call: 301-748-3321**

**Mackintosh Commercial Brokerage**

262 W. Patrick Street Frederick, Maryland 21701 O: 1-800-727-SOLD ext.235

Fax #: 301-846-4317

Email: [Nancy@ngreen.com](mailto:Nancy@ngreen.com)

Website: <http://www.ngreen.com/>

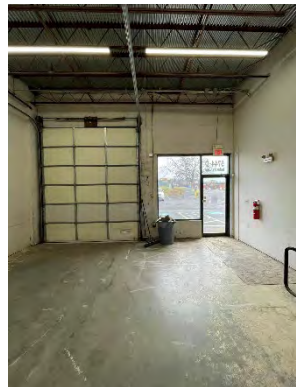


**MACKINTOSH, Inc.**  
COMMERCIAL BROKERAGE

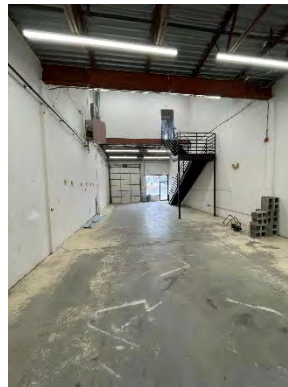
**Suite 105 - 1550 Mercantile Drive, Frederick, Md. 21703**



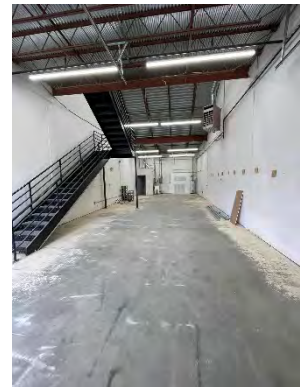
**Entrance Sign**



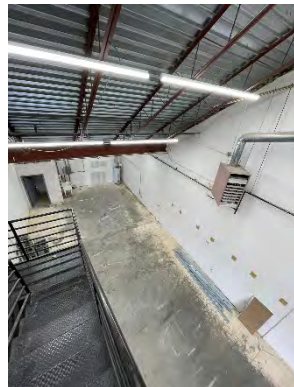
**View Inside Front**



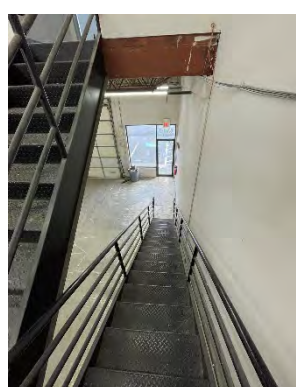
**View from Rear**



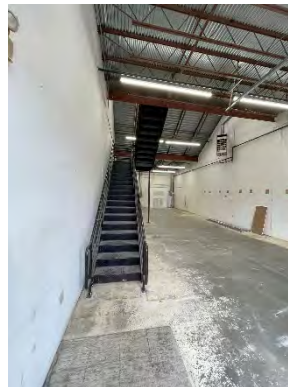
**View from Front**



**View from Mezzanine**



**View from Stairs**



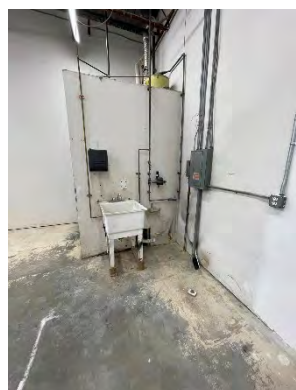
**View of Stairs**



**View Mezz. Office**



**Water Heater**



**Mop Sink**



**Restroom**



**Mezz. Storage Closet**



**Directions:**

From Interstate 70 Exit 54 continue West on Monocacy Blvd (which becomes New Design Road. Continue to Crestwood Blvd. Turn Right on Crestwood Blvd. Continue to Hannover Drive into standalone building Suite 105, 1550 Mercantile Drive, Frederick, Maryland 21703

---

**For Additional Info Call: Nancy Green – 301-748-3321 or 240-529-0135 Mackintosh Commercial Brokerage, 262 West Patrick Street, Frederick, Maryland 21701 Fax #: (301) 846-4317 / O: 1-800-727-SOLD ext.235**  
**Email: Nancy@ngreen.com / Website: www.ngreen.com**  
*All information deemed reliable, but not guaranteed.*