



## **Hidden Harbor Marina**

# **Hidden Harbor Marina**

10 Prawn Street  
St Augustine, FL 32084  
[www.hiddenharbor.biz](http://www.hiddenharbor.biz)

## **Established Marina with Development Opportunity**

---

Information herein has been provided by the property owner, public records, or other sources believed to be reliable. Broker and Sales Agent make no guarantee, warranty or representations about accuracy or completeness. Any projections, opinions, assumptions or estimates provided are not represented to be exact costs of materials or service. Buyer should conduct a careful, independent investigation of the material provided and determine to your satisfaction the suitability

**Hidden Harbor  
Marina**

# Hidden Harbor Marina

**45 SLIP MARINA AND  
2+ ACRE UPLAND DEVELOPMENT SITE**

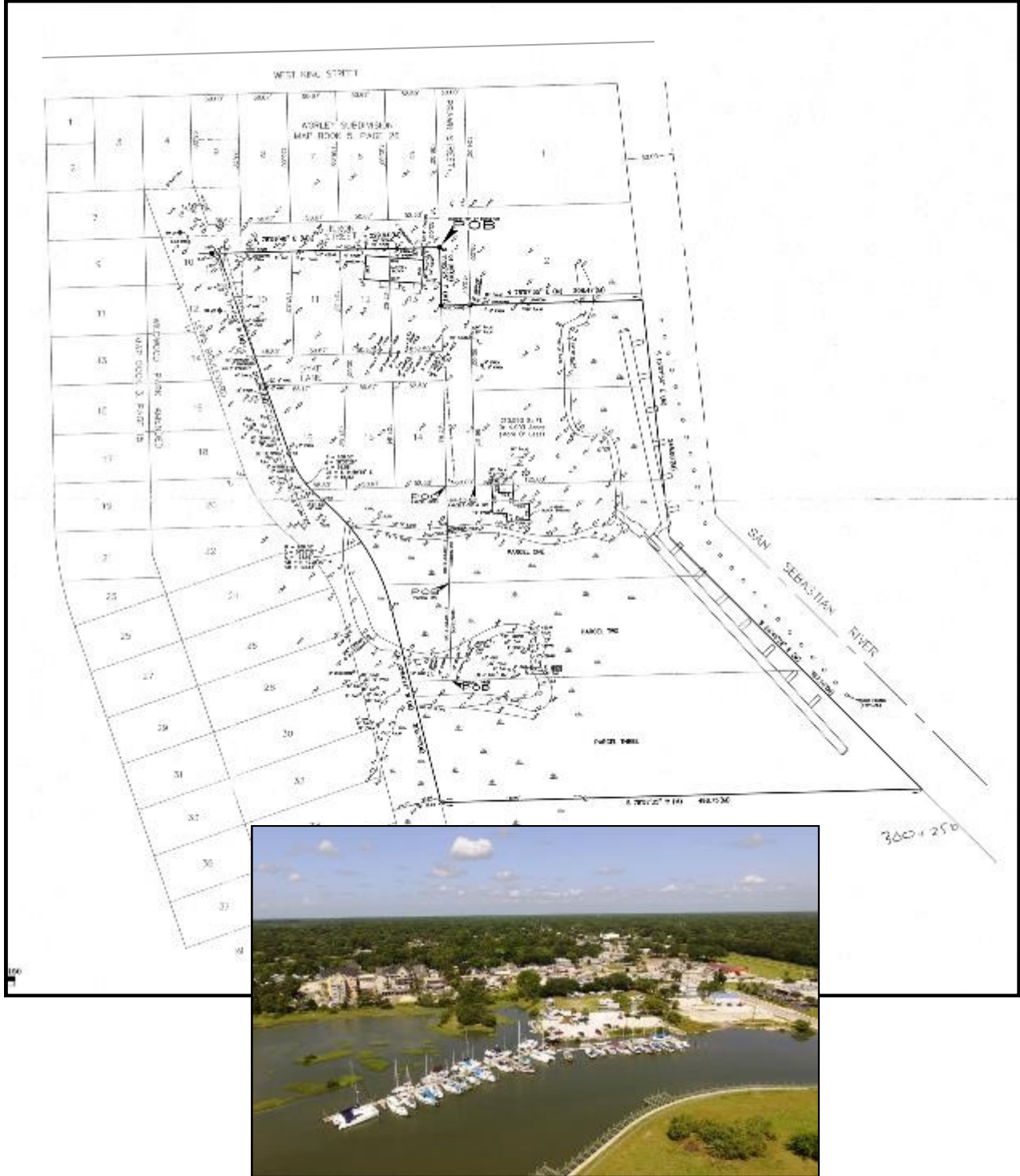
- **Great Location in the Heart of Old St Augustine. Short walk to the Historic District. Close to Flagler College.**
- **Easy access from US1 and King Street.**
- **RGO Zoning, 50' Building Height: Residential, Office, Restaurant, Hotel, Mixed Use.**
- **All utilities on site.**
- **Income from established 45 Slip Marina.**



**Hidden Harbor  
Marina**

# Hidden Harbor Marina

**45 SLIP MARINA AND  
2+ ACRE UPLAND DEVELOPMENT SITE**

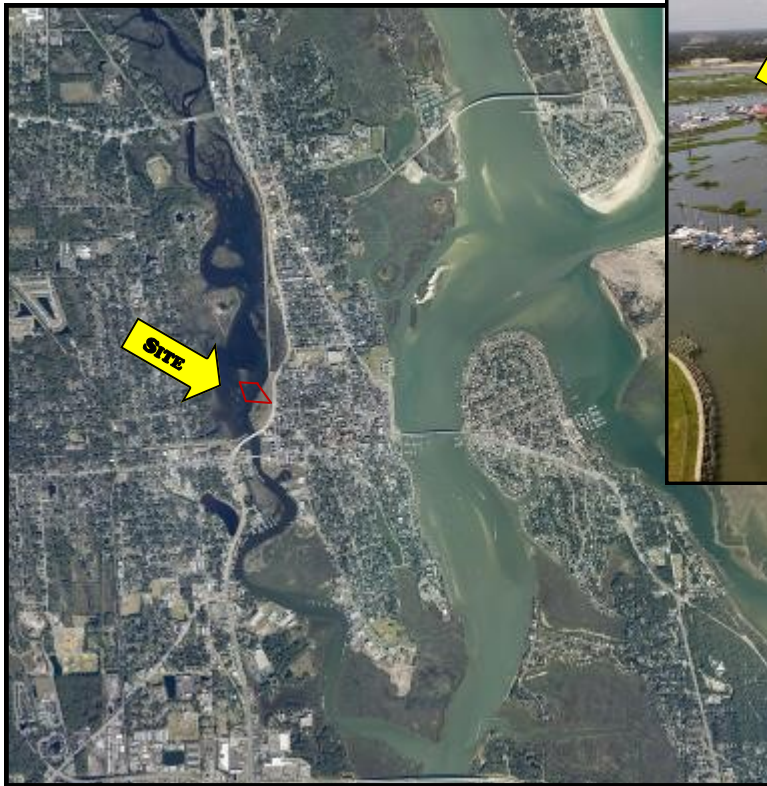


Information herein has been provided by the property owner, public records, or other sources believed to be reliable. Broker and Sales Agent make no guarantee, warranty or representations about accuracy or completeness. Any projections, opinions, assumptions or estimates provided are not represented to be exact costs of materials or service. Buyer should conduct a careful, independent investigation of the material provided and determine to your satisfaction the suitability

## Hidden Harbor Marina

# Hidden Harbor Marina

- In the Heart of Old St Augustine
- 50' Building Height: Residential,
- Office, Restaurant, Hotel, Mixed Use
- Direct Deep Water ICW Access
- Close to Flagler College



### Bob Million

Cell: 904-808-5606

Office: 904-495-0143

rbmillion@watsonrealtycorp.com



SJCMLS# 164345

Information herein has been provided by the property owner, public records, or other sources believed to be reliable. Broker and Sales Agent make no guarantee, warranty or representations about accuracy or completeness. Any projections, opinions, assumptions or estimates provided are not represented to be exact costs of materials or service. Buyer should conduct a careful, independent investigation of the material provided and determine to your satisfaction the suitability