

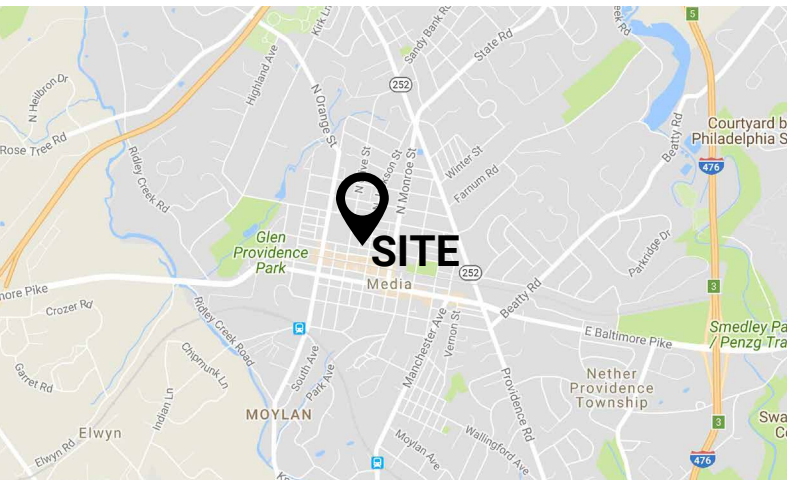
± 2,000 SF OFFICE BUILDING

9 W FRONT STREET, MEDIA, PA 19063

FOR LEASE
\$3,300 / MONTH
PLUS GAS & ELECTRIC

PROPERTY FEATURES

- ✓ ± 2,000 SF Office Building ideal for a law firm footsteps away from the Media Courthouse on prestigious Front Street!
- ✓ Each floor has 4 offices, a powder room and 2 fireplaces for a total of 8 offices, 2 powder rooms and 4 fireplaces in this light filled building.
- ✓ Baseboard heat and central air.
- ✓ There is an attic and a basement that offers some storage.
- ✓ Off-Street Parking



CONTACT US

CAROLYN CLINE, ASSOCIATE BROKER

Phone: 610.359.1100

Cell: 610.299.8306

Email: ccline@zmcre.com

1306 Wilmington Pike, Suite A-2

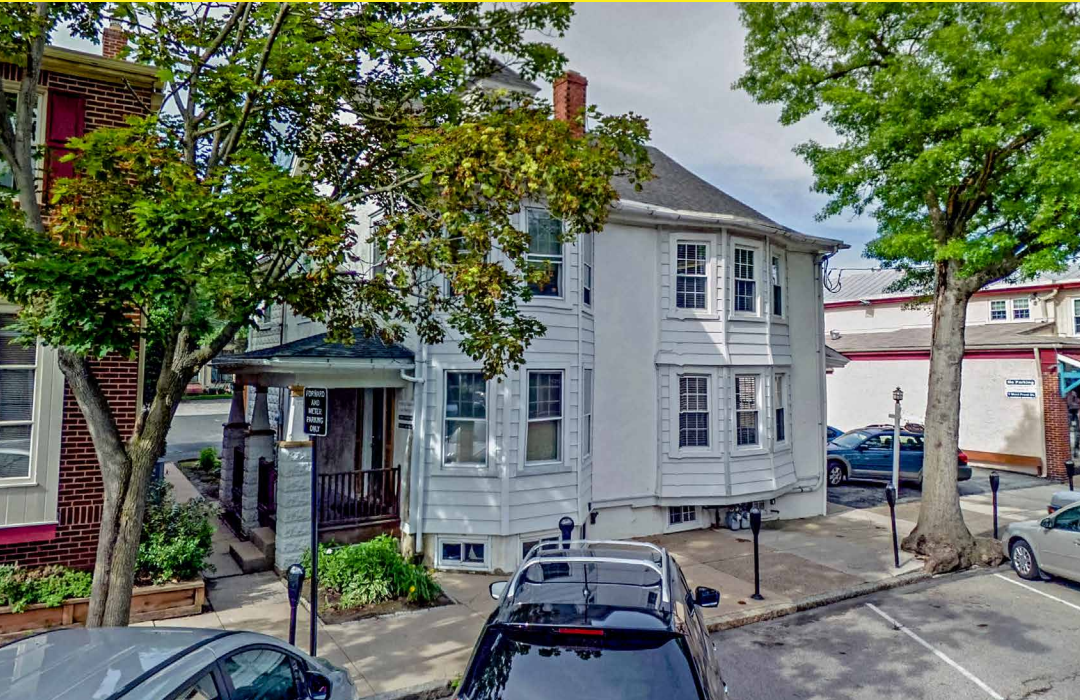
West Chester, PA 19382

610.359.1100

www.zmcre.com


ZOMMICK MCMAHON
COMMERCIAL REAL ESTATE

MEDIA PROPERTY PHOTOS - 9 W FRONT STREET



bright MLS

CONTACT US

CAROLYN CLINE, ASSOCIATE BROKER

Phone: 610.359.1100

Cell: 610.299.8306

Email: ccline@zmcre.com

1306 Wilmington Pike, Suite A-2

West Chester, PA 19382

610.359.1100

www.zmcre.com


ZOMMICK MCMAHON
COMMERCIAL REAL ESTATE

MEDIA SITE LOCATION AERIAL - 9 W FRONT STREET




ZOMMICK MCMAHON
COMMERCIAL REAL ESTATE

CONTACT US

CAROLYN CLINE, ASSOCIATE BROKER

Phone: 610.359.1100

Cell: 610.299.8306

Email: ccline@zmcre.com

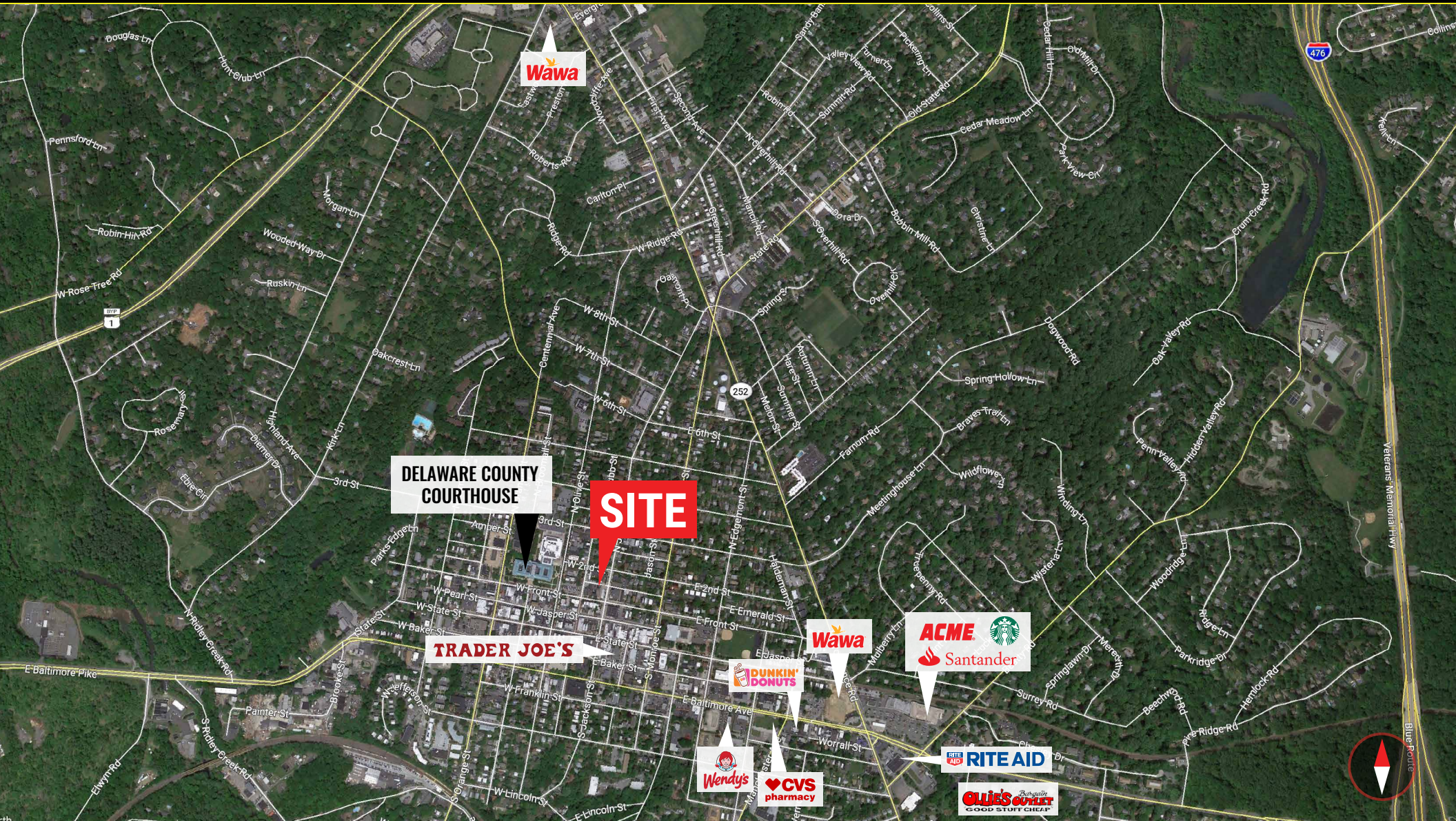
1306 Wilmington Pike, Suite A-2

West Chester, PA 19382

610.359.1100

www.zmcre.com

MEDIA MARKET AERIAL - 9 W FRONT STREET



CONTACT US

CAROLYN CLINE, ASSOCIATE BROKER

Phone: 610.359.1100

Cell: 610.299.8306

Email: ccline@zmcre.com

1306 Wilmington Pike, Suite A-2

West Chester, PA 19382

610.359.1100

www.zmcre.com

ABOUT ZOMMICK McMAHON COMMERCIAL REAL ESTATE

Zommick McMahon Commercial Real Estate, Inc. has been a Metro Philadelphia Area staple since its inception in 1949. The Company was founded by Joseph Zommick, and continues today with Ryan McMahon and his highly experienced staff, whom are all results-oriented professionals.

SOME OF OUR SATISFIED CLIENTS:



**ROYAL
FARMS**



WSFS bank
We Stand For Service



Regency
Centers.



Bank of America®



IRON HILL
BREWERY & RESTAURANT



**DUNKIN'
DONUTS**®



Express®
EMPLOYMENT PROFESSIONALS



ZOMMICK McMAHON
COMMERCIAL REAL ESTATE

CONTACT US

CAROLYN CLINE, ASSOCIATE BROKER

Phone: 610.359.1100

Cell: 610.299.8306

Email: ccline@zmcre.com

1306 Wilmington Pike, Suite A-2

West Chester, PA 19382

610.359.1100

www.zmcre.com