

JETPLEX CENTER

2995 WALL TRIANA HIGHWAY AND 799 JAMES RECORD ROAD, HUNTSVILLE, AL 35824

GrahamCompany.com



AVAILABLE
Suite 2995 - A1
9,139 SF

AVAILABLE
Suite 2995 - B1
9,180 SF

FOR LEASE | Industrial Flex at Jetplex Center, Huntsville, AL 35824

Suite 2995 - A1
9,139 SF



PROPERTY DESCRIPTION

Jetplex Center offers an exceptional leasing opportunity for clients needing industrial flex space. Its location within Jetplex Industrial Park offers many strategic advantages, and fast access to major traffic thoroughfares. The property offers flexible plans and is designed to accommodate a wide range of requirements.

PROPERTY HIGHLIGHTS

- Located in Jetplex Industrial Park
- 19' clear height
- Excellent visibility
- 1.5 miles to Interstate I-565

LOCATION DESCRIPTION

Located within Jetplex Industrial Park, Jetplex Center is an industrial flex multi-tenant property comprised of 3 buildings. Its proximity to Huntsville International Airport, the Intermodal Center, I-565 and I-65 make it a desirable location for industrial users and service providers serving the needs of North Alabama and Southern Tennessee.

OFFERING SUMMARY

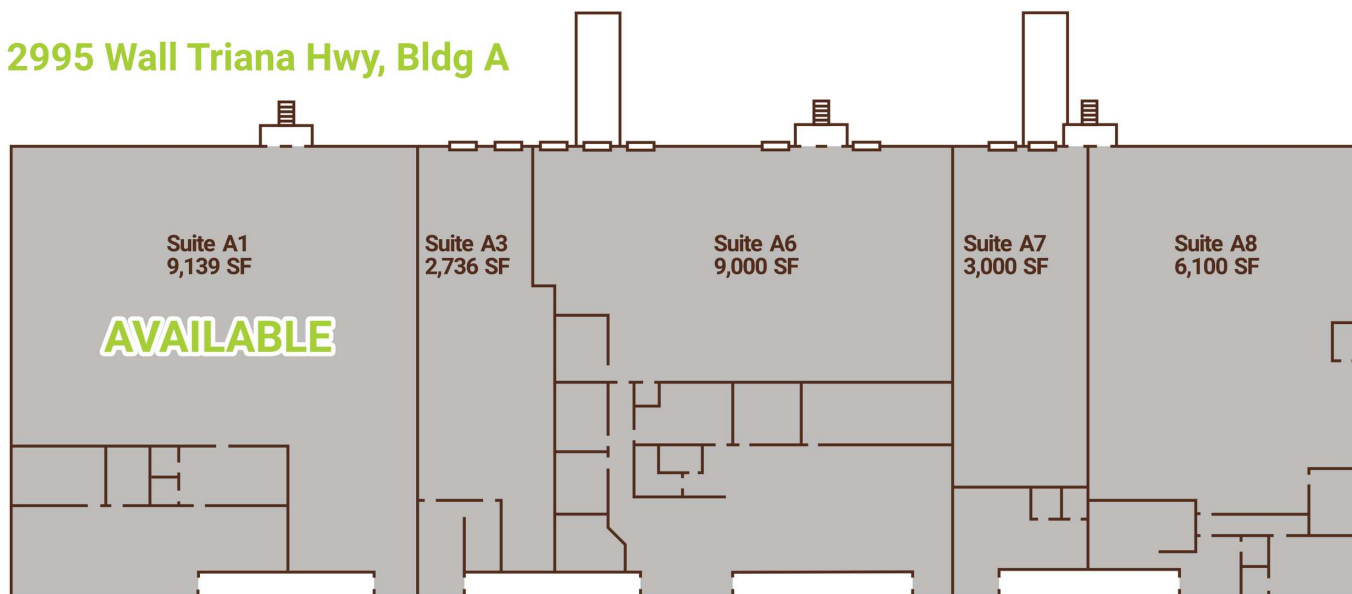
LEASE RATE:	\$9.00 SF/yr (NNN)
AVAILABLE SF:	9,139 - 9,180 SF
BUILDING SIZE:	145,497 SF



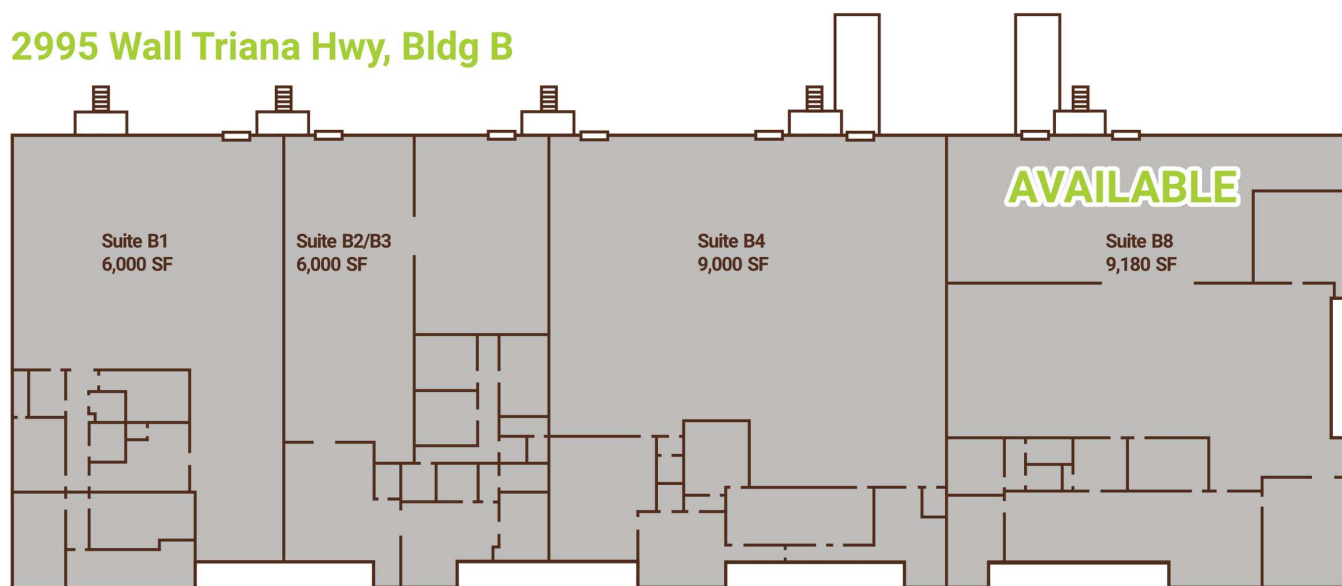
AVAILABLE SPACES

SUITE	SIZE (SF)	LEASE TYPE	LEASE RATE	DESCRIPTION
2995 Suite A1	9,139 SF	NNN	\$9.00 SF/yr	2995 Wall Triana Highway, Suite A1, offers 9,139 SF of industrial flex space. Approximately 3,139 SF offers office space and fully conditioned warehouse, including 10 offices, a conference room, break room, and two ADA restrooms. An additional 1,000 SF space offers conditioned storage with 19' clear height. The remaining 5,000 SF offers heated warehouse space and is 100% sprinklered. This 5,000 SF warehouse area offers two 9' x 10' dock high doors, and 19' clear height.
2995 Suite B8	9,180 SF	NNN	\$9.00 SF/yr	Suite B8 offers fully conditioned industrial flex space comprised of 2,700 sf of office space and 6,480 sf of warehouse space. The warehouse includes a 400 sb lab area with 1 office. The office portion includes a conference room, break area, 3 offices, 2 large open rooms for cubicles/work areas, and 2 restrooms with shower. The warehouse area offers one 10' x 12' dock with an 8' x 10' ramp.

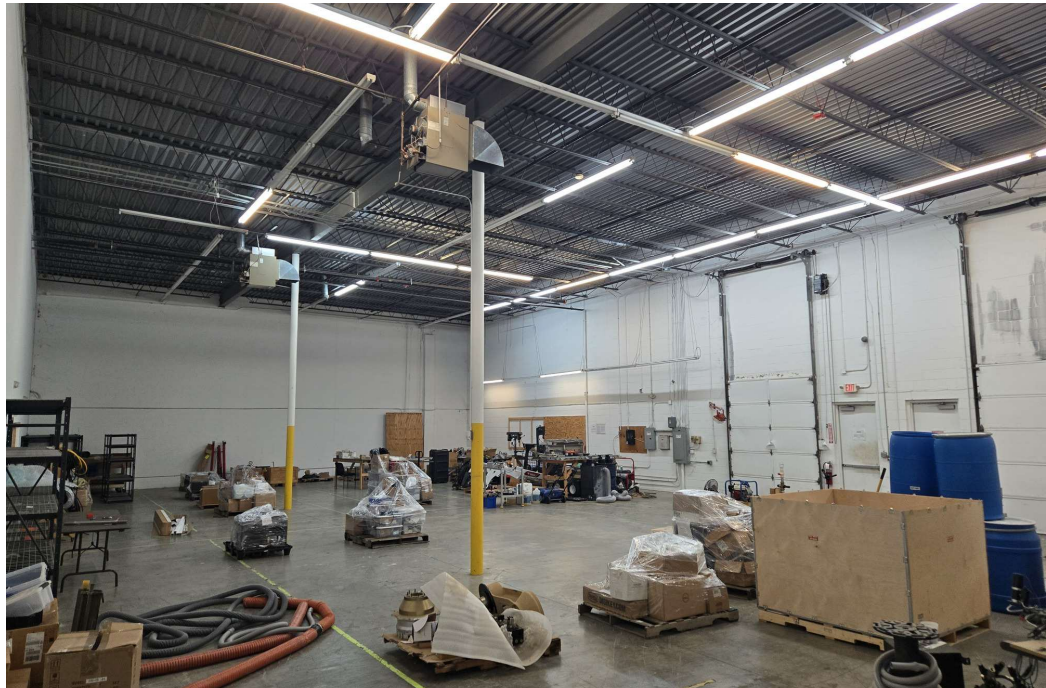
2995 Wall Triana Hwy, Bldg A



2995 Wall Triana Hwy, Bldg B



2995 WALL TRIANA HIGHWAY, SUITE A1 | FOR LEASE



2995 WALL TRIANA HIGHWAY, SUITE B8 | FOR LEASE



