



24 CONDOMINIUM RESIDENCES AT #80 - 88 RIVER STREET  
HAVERHILL, MASSACHUSETTS

A PROJECT OF  
VINCENT O'RORKE

SDA Schopf Design Associates, Salem, Massachusetts 01970



24 CONDOMINIUM RESIDENCES AT #80 - 88 RIVER STREET  
HAVERHILL, MASSACHUSETTS

A PROJECT OF  
VINCENT O'RORKE  
SDA Schopf Design Associates, Salem, Massachusetts 01970

ALTERNATIVE 3

APRIL 27, 2006



12 CONDOMINIUM RESIDENCES AT #80 - 88 RIVER STREET  
HAVERHILL, MASSACHUSETTS

A PROJECT OF  
VINCENT O'RORKE

SDA Schopf Design Associates, Salem, Massachusetts 01970

MERRIMACK RIVER

FLOW

ESTIMATED MEAN HIGH WATER = 4.5'  
EXISTING RIVER BANK - FACE OF RETAINING WALL  
TO BE RELOCATED BY OTHERS

EBB FLOOD

EXIST. 12" RCP OUTFALL  
INV. = 9.85

LOT #4 & 5  
AREA = 8,549 S.F.  
= 0.15 AC

FACE CEM. CONC.  
RET. WALL (2' WIDE)

FORMER PROPERTY LINE SHOWN  
ON PLAN 43 PL. BK. 25  
E.S.D.R.D.

FLOW

N/F RIVER ROCK  
REALTY TRUST

N/F HORSCH  
REALTY TRUST

EXISTING BUILDING  
#68-74

THRESHOLD  
EL. = 24.23

CEM. CONC. RET. WALL  
(2' WIDE)

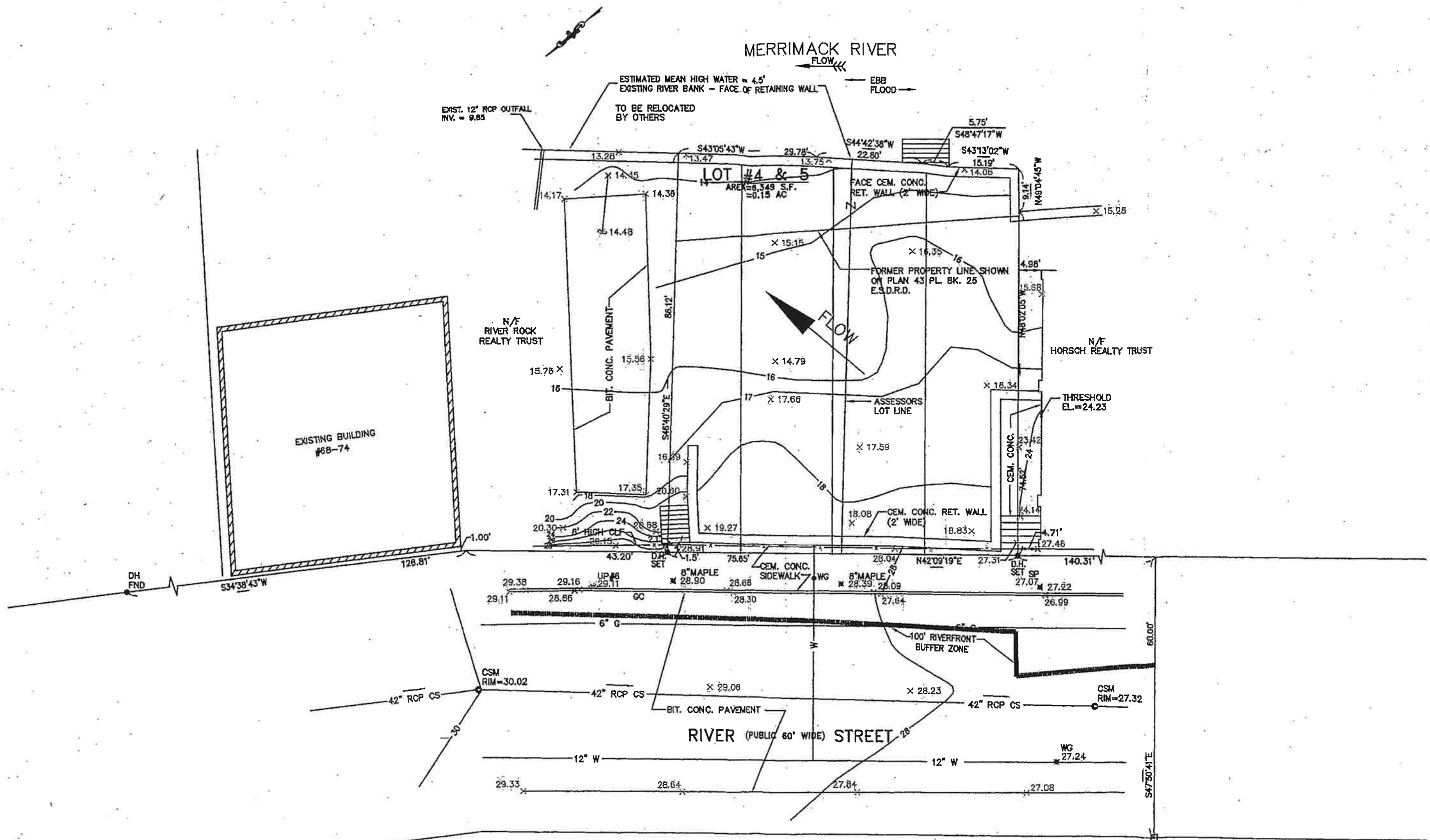
CEM. CONC. SIDEWALK

8" MAPLE

8" MAPLE

RIVER (PUBLIC 60' WIDE) STREET

PRE-10 YEAR  
SCALE 1" = 20'



SB  
FND

