

FOR SALE

# AVAILABLE LAND

STATE ROUTE 43

Aurora, Ohio 44202

7.58 ACRES



## LAND DETAILS

### PORTAGE COUNTY

- + Parcel:
  - #35-006-00-00-004-000; 7.58 Acres
- + Highly visible lot on SR-43
- + Taxes: \$6,107.28 per year
- + Zoning: I-1 Industrial, Research, Office (City of Streetsboro zoning)
- + On the corner of South Chillicothe Road and Crane Centre Drive
- + Under five (5) miles to SR-14 and Streetsboro
- + Sale Price: \$50,000 per acre



## CONTACT US

### DAVID COMERNISKY

Vice President  
+1 216 363-6427  
david.comernisky@cbre.com

### ZADA LINES

Associate  
+1 330 670 4418  
zada.lines@cbre.com

### CBRE INC.

3421 Ridgewood Road, Suite 150  
Akron, Ohio 44333  
www.cbre.com

[www.cbre.com/akron-canton](http://www.cbre.com/akron-canton)

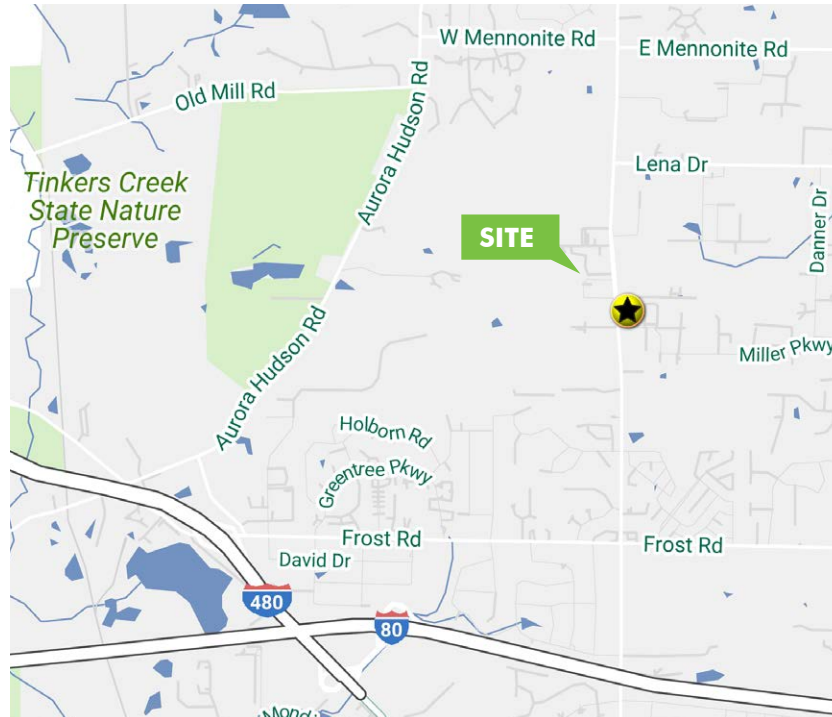
**CBRE**

# FOR SALE AVAILABLE LAND

**7.58 ACRES**  
State Route 43  
Aurora, Ohio 44202



## MAP



Aurora is a city in Portage County, Ohio. The population was 15,548 at the 2010 census. It is part of the Akron Metropolitan Statistical Area. Aurora High School is ranked tenth in the state by U.S. News & World Report and has been designated an “Excellent District” by the State Board of Education. The property is located in the heart of the Industrial/Manufacturing sector of Aurora. With over two (2) million Sq. Ft. and conveniently located to I-80, I-480, SR-43 and SR 14. It offers quick access to all of the major highways that service Northeast Ohio. Some of the major companies located in the area are Eaton Corporation, L’Oreal, McMaster-Carr Supply, Natural Essentials, Wagner Industries, Berry Plastics and Custom Pultrusions. This would be a great location for your company.

### 2016 Estimated Demographics

	1 Mile	3 Miles	5 Miles
Population	3,823	20,401	45,069
Average Age	38.3	40.9	41.5
Average HH Income	\$80,014	\$83,791	\$99,303
Households	1,469	8,152	17,451
Total Businesses	111	1,040	1,987
Total Employees	3,685	15,328	23,091

© 2016 CBRE, Inc. This information has been obtained from sources believed reliable. We have not verified it and make no guarantee, warranty or representation about it. Any projections, opinions, assumptions or estimates used are for example only and do not represent the current or future performance of the property. You and your advisors should conduct a careful, independent investigation of the property to determine to your satisfaction the suitability of the property for your needs. Photos herein are the property of their respective owners and use of these images without the express written consent of the owner is prohibited. CBRE and the CBRE logo are service marks of CBRE, Inc. and/or its affiliated or related companies in the United States and other countries. All other marks displayed on this document are the property of their respective owners.

[www.cbre.com/akron-canton](http://www.cbre.com/akron-canton)

**CBRE**