

9909-9911 Pflumm Road

Lenexa, Kansas



Office/Flex Space for Lease

- ◆ 3,600 sf available
- ◆ 100% office
- ◆ Unique high-finish space
- ◆ Excellent interstate access to I-35
- ◆ Lease rate \$9.50/sf IG

Exclusive Property Listing

Seamus M. McLaughlin 816.289.5288 smclaughlin@ngzimmer.com

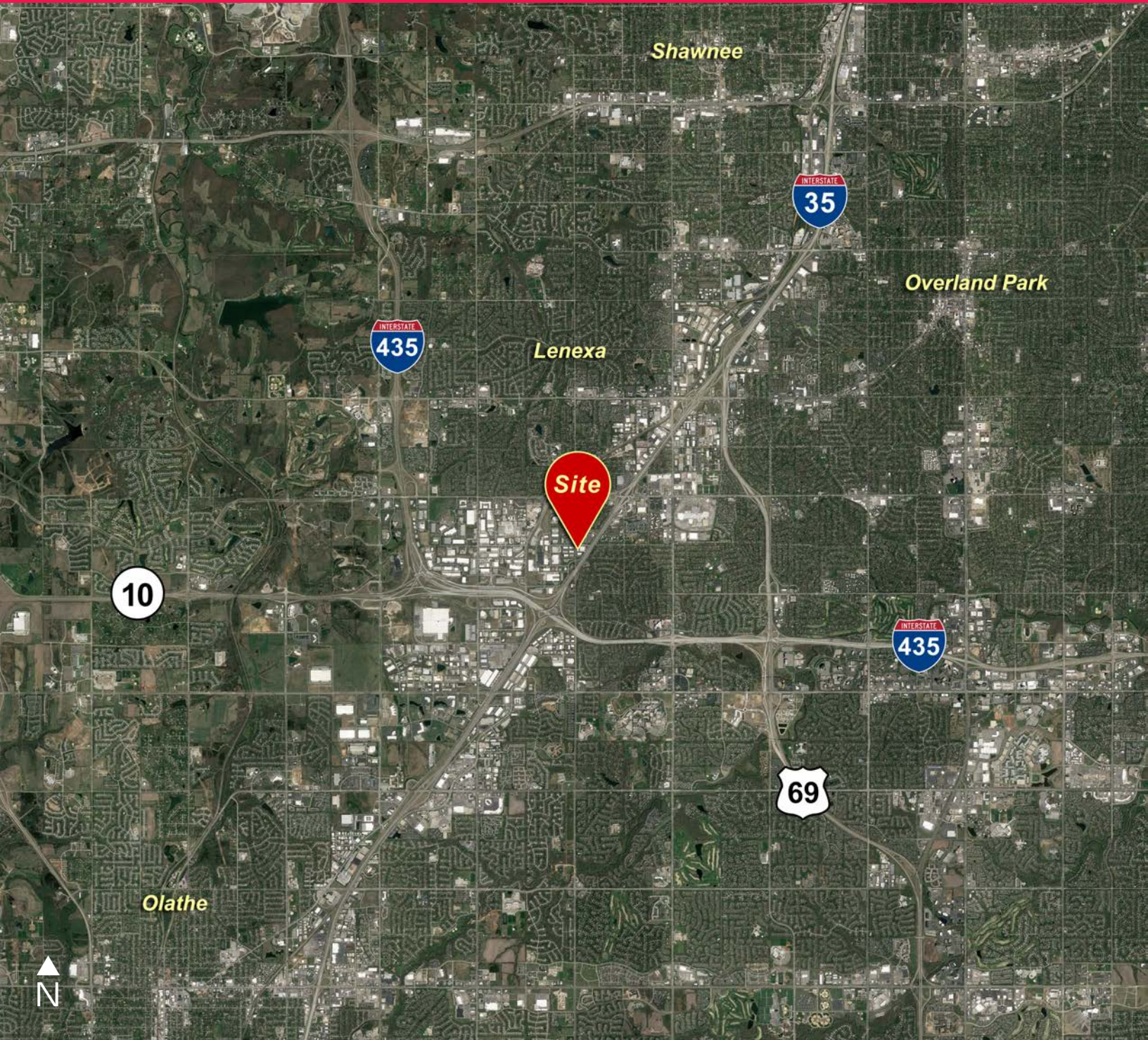
Tommy Gentry 816.268.4249 tgentry@ngzimmer.com



Procuring broker shall only be entitled to a commission calculated in accordance with the rates approved by our principal only if such procuring broker executes a brokerage agreement acceptable to us and our principal and the conditions as set forth in the brokerage agreement are fully and unconditionally satisfied. Although all information furnished regarding property for sale, rental, or financing is from sources deemed reliable, such information has not been verified and no express representation is made nor is any to be implied as to the accuracy thereof and it is submitted subject to errors, omissions, change of price, rental or other conditions, prior sale, lease or financing, or withdrawal without notice and to any special conditions imposed by our principal.

9909-9911 Pflumm Road

Lenexa, Kansas



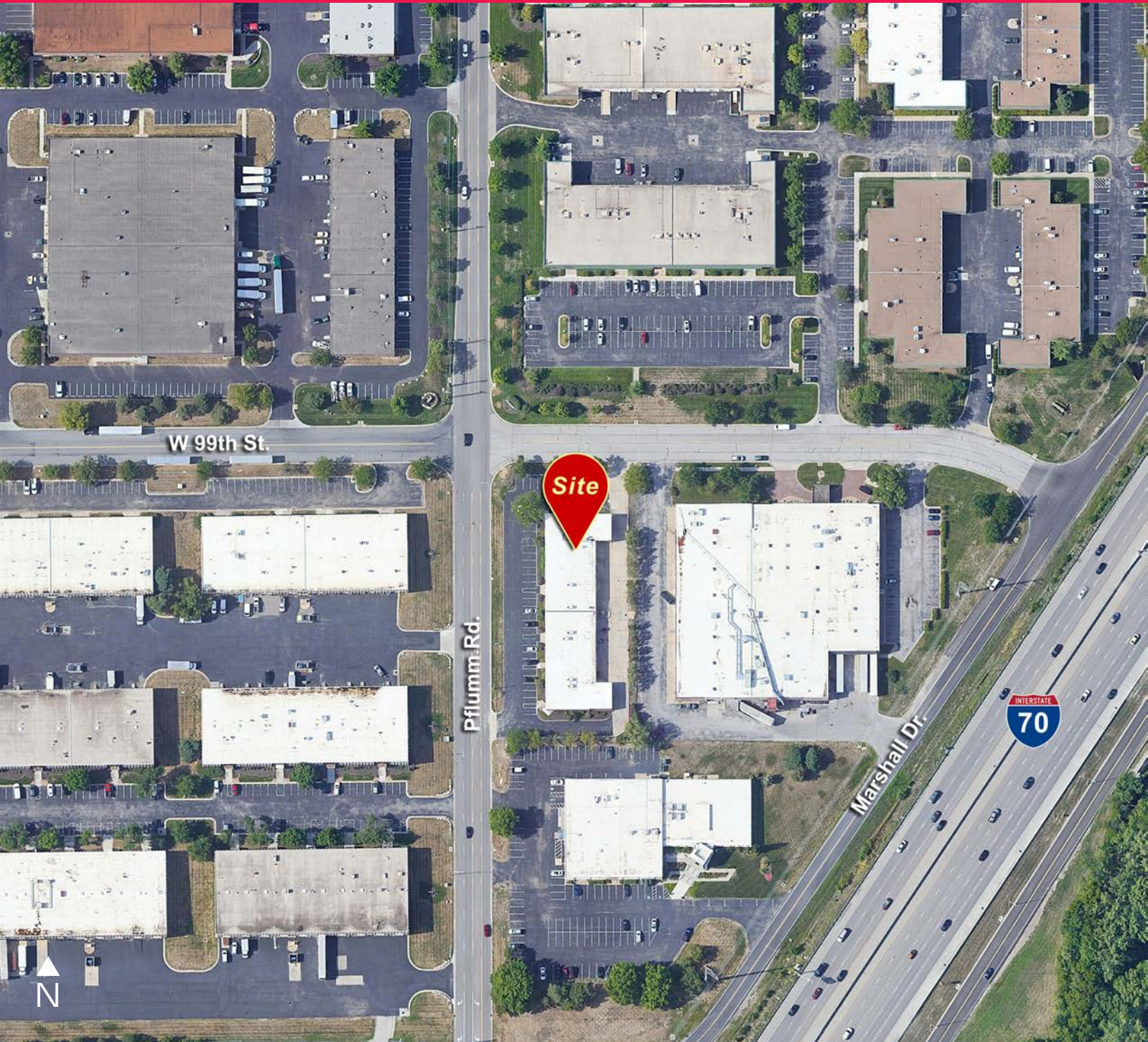
Exclusive Property Listing

Seamus M. McLaughlin 816.289.5288 smclaughlin@ngzimmer.com

Tommy Gentry 816.268.4249 tgentry@ngzimmer.com

9909-9911 Pflumm Road

Lenexa, Kansas



Exclusive Property Listing

Seamus M. McLaughlin 816.289.5288 smclaughlin@ngzimmer.com

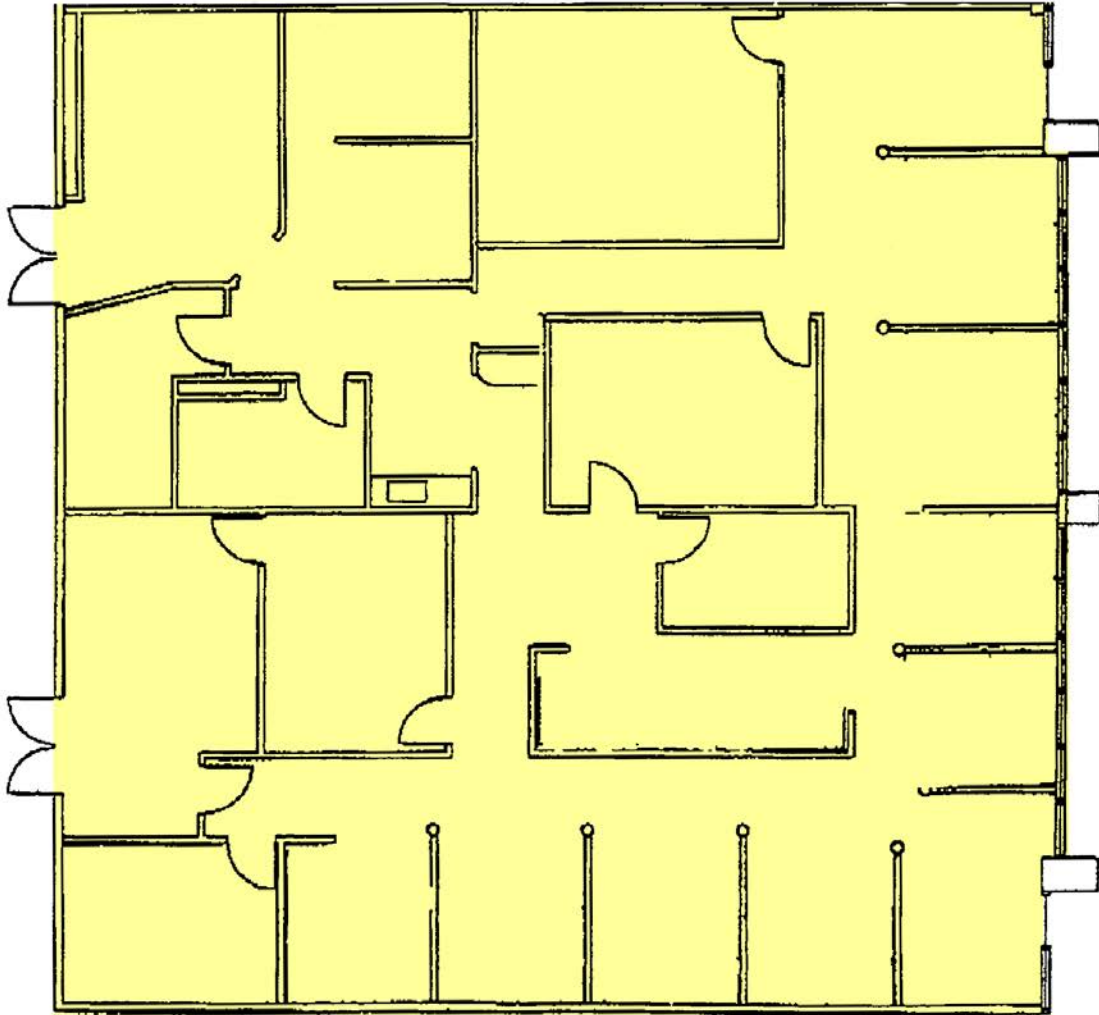
Tommy Gentry 816.268.4249 tgentry@ngzimmer.com

 **Newmark Grubb**
Zimmer

9909-9911 Pflumm Road

Lenexa, Kansas

Floor Plan:



Exclusive Property Listing

Seamus M. McLaughlin 816.289.5288 smclaughlin@ngzimmer.com

Tommy Gentry 816.268.4249 tgentry@ngzimmer.com