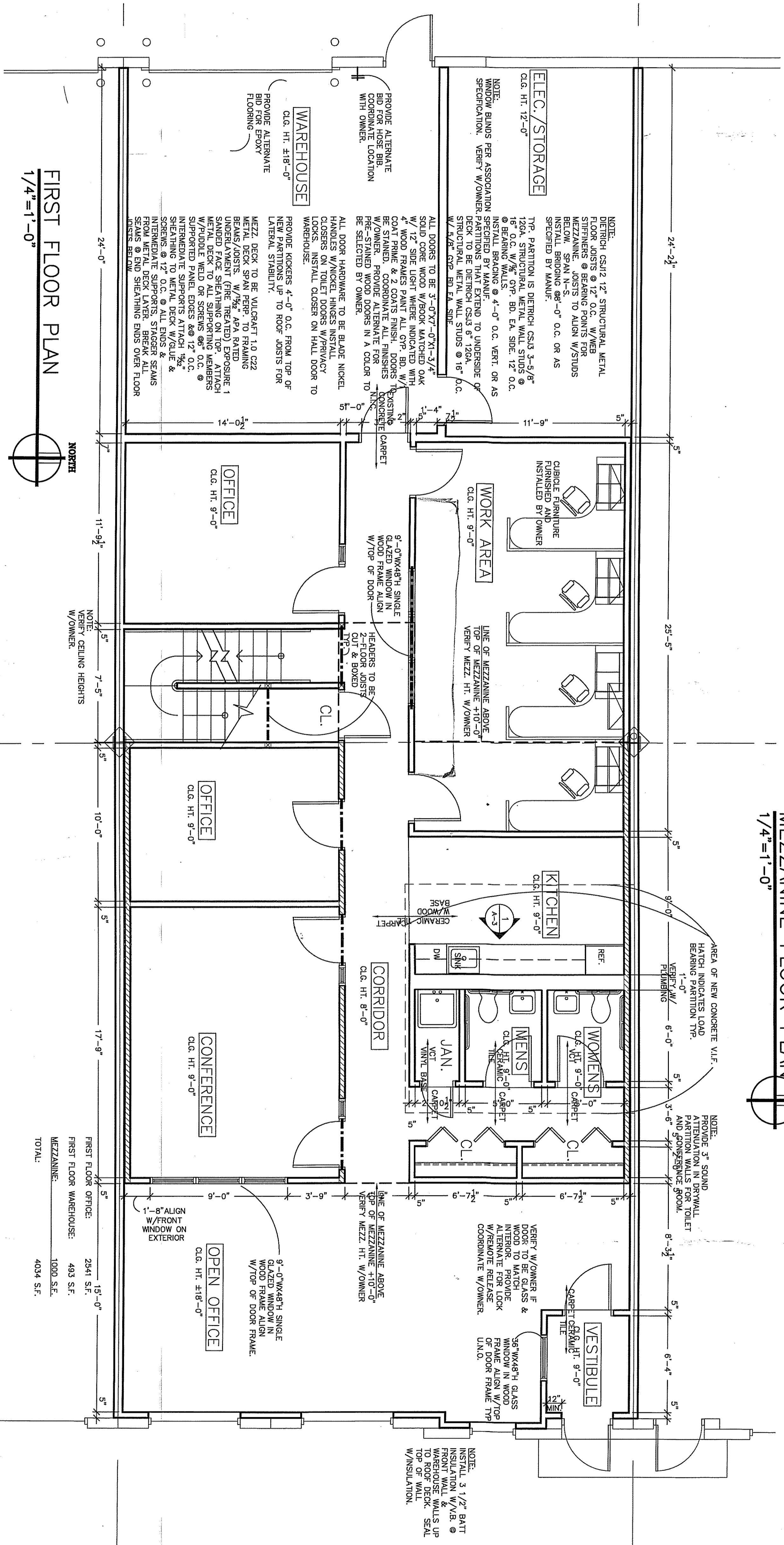


MEZZANINE FLOOR PLAN
1/4" = 1'-0"



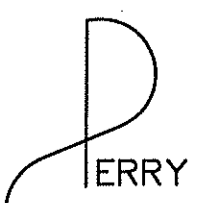
FIRST FLOOR PLAN
1/4" = 1'-0"

REVISIONS

FIRST FLOOR PLAN AND MEZZANINE FLOOR PLAN



2585 Millennium Drive Unit E Elgin, IL 60123



CONSULTING ARCHITECTS • PLANNERS • CONSTRUCTION MANAGERS • ENGINEERING SERVICES

1051 E. MAIN ST., STE. 211 • EAST DUNDEE, IL 60118 • 847/426-2772 • 815/432-2060 • 312/491-1776

A-1

06/04/08

PERRY CONSULTING © 2008

08-0510

FIRST FLOOR OFFICE:	2941 S.F.
FIRST FLOOR WAREHOUSE:	493 S.F.
MEZZANINE:	1000 S.F.
TOTAL:	4434 S.F.