

BRUNEL HOUSE

UP TO 59,165 SQ FT
GRADE A OFFICE HEADQUARTERS

\ FRIMLEY SQUARE, FRIMLEY
\ AN ESTABLISHED OFFICE CAMPUS WITH ON-SITE AMENITIES



BRUNEL HOUSE

59,165 SQ FT GRADE A OFFICE HEADQUARTERS
OPPORTUNITY SITUATED WITHIN FRIMLEY
SQUARE – A LANDMARK OFFICE CAMPUS,
LOCATED JUST OVER ONE MILE FROM M3
(JUNCTION 4), FRIMLEY, SURREY

A LANDMARK OPPORTUNITY

Brunel House forms part of a self-contained and secure Landmark headquarters office campus set in the affluent town of Frimley, Surrey. The opportunity provides the perfect solution for businesses looking to relocate to an established office location just 1.8 miles from the M3 Junction 4.

With superior road, rail and air connections, a highly skilled catchment population and major multinationals located nearby, such as BAE, Novartis, CSC and IBM, Brunel House offers high specification Grade A office accommodation on flexible terms.



UNRIVALLED CONNECTIVITY

Brunel House is accessed via the Chobham Road at the junction with the A325 Portsmouth Road, which links to the M3. The property is 1.8 miles (2.9 km) from Junction 4 of the M3 and 12 miles (19 km) south west of Junction 12 of the M25, offering quick access to the UK's national motorway network, airports and only 33 miles (53 km) from Central London.

Rail access is excellent with Frimley and Farnborough railway stations less than 7 minutes drive away. Accessible via the free shuttle service running every 15 minutes at peak times. Providing regular services to London Waterloo, Guildford, Reading and Southampton.

Farnborough Main railway station offers a direct service to London Waterloo in just 36 minutes.

A Exterior façade of Brunel House

B Gated entrance to Sir William Siemens Square

C Full height glazed reception

D Typical floorspace within Brunel House



SUPERIOR QUALITY
Grade A Office
Headquarters



ESTABLISHED OFFICE CAMPUS
Home to Siemens
UK Headquarters



FAST ACCESS
Located just 1 mile
from M3 (junction 4)



ENERGY EFFICIENT
BREEAM rating of
"Very Good"



PROVEN LOCATION
Local occupiers include BAE
Systems, Novartis, CSC and IBM



FAST CONNECTIONS
London Waterloo in 36 mins
from Farnborough Main Station



ON-SITE AMENITIES
300 seat restaurant,
Starbucks Coffee Shop
and Nuffield gym

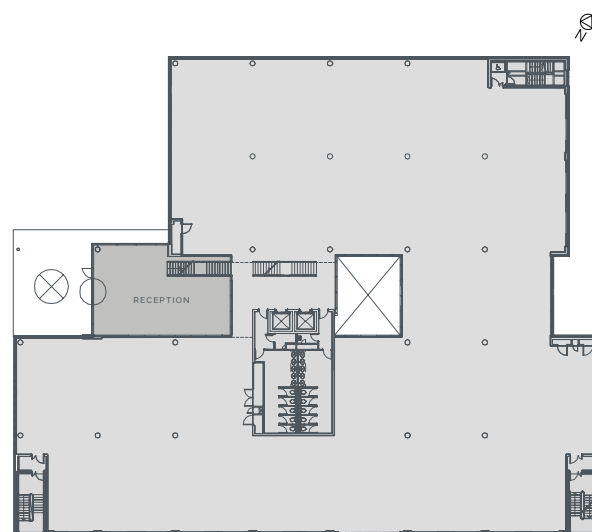


PARKING PROVISIONS
On-site multi-storey
car park

CONSIDERED SPECIFICATION

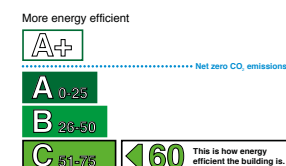
Brunel House provides Grade A office accommodation over ground and 2 upper floors, behind brick and glazed elevations and benefits from full height reception area.

The building benefits from a total of 94 on-site car parking spaces with a significant number of additional available across the campus and nearby.



Typical Floorplan (for indicative purposes only)

- Flexible floor plates from 18,700 sq ft
- Four pipe fan-coil air conditioning
- Metal tiled suspended ceilings
- Fully accessible raised floors
- EPC rating "C"
- Excellent car parking and regular shuttle bus
- Shower facilities
- 24/7 site security & car registration recognition cameras
- Office furniture could be made available
- Advanced energy-management systems including passing infra-red lighting and lux-sensor automatically operated window blinds.
- The campus has achieved a BREEAM rating of "Very Good" and won the British Council of Offices 2008 for "fit-out of workplace" South East award.



SECOND FLOOR	19,318 SQ FT	1,795 SQ M
FIRST FLOOR	18,752 SQ FT	1,742 SQ M
GROUND FLOOR	18,700 SQ FT	1,737 SQ M
RECEPTION	2,395 SQ FT	223 SQ M
TOTAL	59,165 SQ FT	5,497 SQ M

The property has been measured in accordance with the RICS Code of Measuring Practice (6th edition) and provides the following approximate net internal areas:

ON-SITE CONVENIENCE

The campus offers a 300 seat restaurant, Starbucks Coffee Shop, executive guest lounge, convenience shop and fully equipped gym. Brunel House is also conveniently located just a short walk to Frimley Town centre with all its town centre amenities.

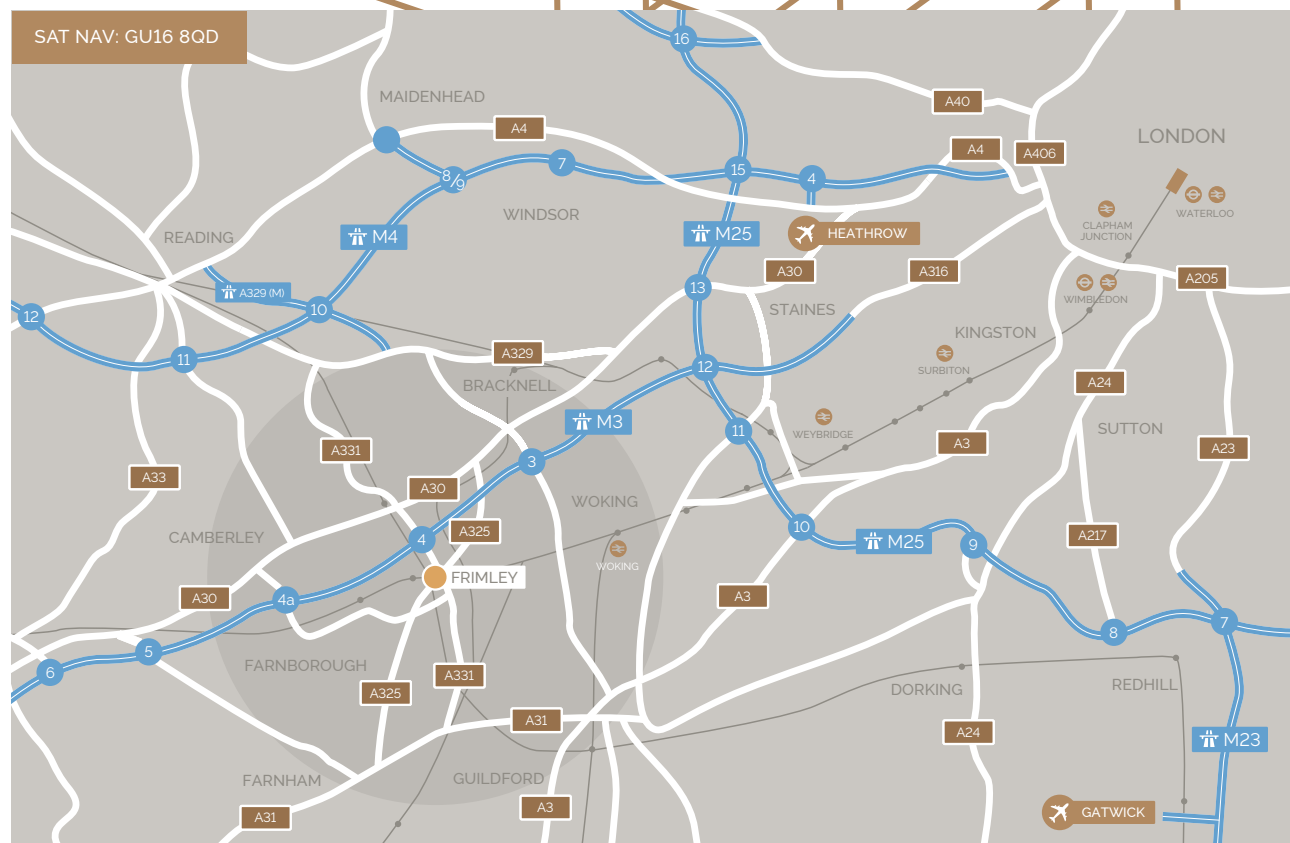


BRUNEL HOUSE

BRUNELHOUSEFRIMLEY.CO.UK

DRIVING DISTANCE

M3 (junction 4)	1.8 miles
M3 (junction 4a)	3.7 miles
M3/M25 Interchange	13.2 miles
M4 (junction 10)	14.3 miles
London Heathrow Airport	20.8 miles
London Gatwick Airport	44.8 miles
Reading	20.2 miles
Central London	38.3 miles



View - strictly by appointment only

Terms - flexible terms available



CHARLES WEST
020 7087 5668
charles.west@eu.jll.com

MATTHEW PARRY
020 7852 4120
matthew.parry@eu.jll.com



MARK EMBUREY
020 7344 6906
mark.emburey@colliers.com

MARK TAYLOR
020 7344 6575
mark.taylor@colliers.com

Misrepresentation Act: Important notice: Jones Lang LaSalle and their clients give notice that: 1. They are not authorised to make or give any representations or warranties in relation to the property either here or elsewhere, either on their own behalf or on behalf of their client or otherwise. They assume no responsibility for any statement that may be made in these particulars. These particulars do not form part of any offer or contract and must not be relied upon as statements or representations of fact. 2. Any areas, measurements or distances are approximate. The text, photographs and plans are for guidance only and are not necessarily comprehensive. It should not be assumed that the property has all necessary planning, building regulation or other consents and Jones Lang LaSalle have not tested any services, equipment or facilities. Purchasers must satisfy themselves by inspection or otherwise. November 2016.