

# FOR LEASE



## The Gates at Sugarloaf

1325 Satellite Blvd. Building 1300. Suwanee, GA 30024



- Class A office located on the main floor right by the entrance, wheelchair accessible.
- Plenty of parking spaces for employees and customers.
- Less than 1 mile from I-85.
- This suite is approx. 1500sqft and it includes 5 Offices, a spacious kitchen/breakroom, storage closet with built-ins, and mechanical room with more storage space.
- This is a **furnished** office with desks, chairs, and even filing cabinets. Just add your art pieces and decor.
- Monthly rate is \$2,625 plus \$300 for utilities(power, water, and internet). Bathrooms and shared areas are maintained by the HOA.

**For More Information:** Ruby Nash | 770-866-1978 | office: 470-400-9877

[RubyNashrealtor@gmail.com](mailto:RubyNashrealtor@gmail.com)

Information contained herein has been obtained from sources deemed reliable but we cannot guarantee its accuracy. No liability is assumed for errors or omissions

# FOR LEASE

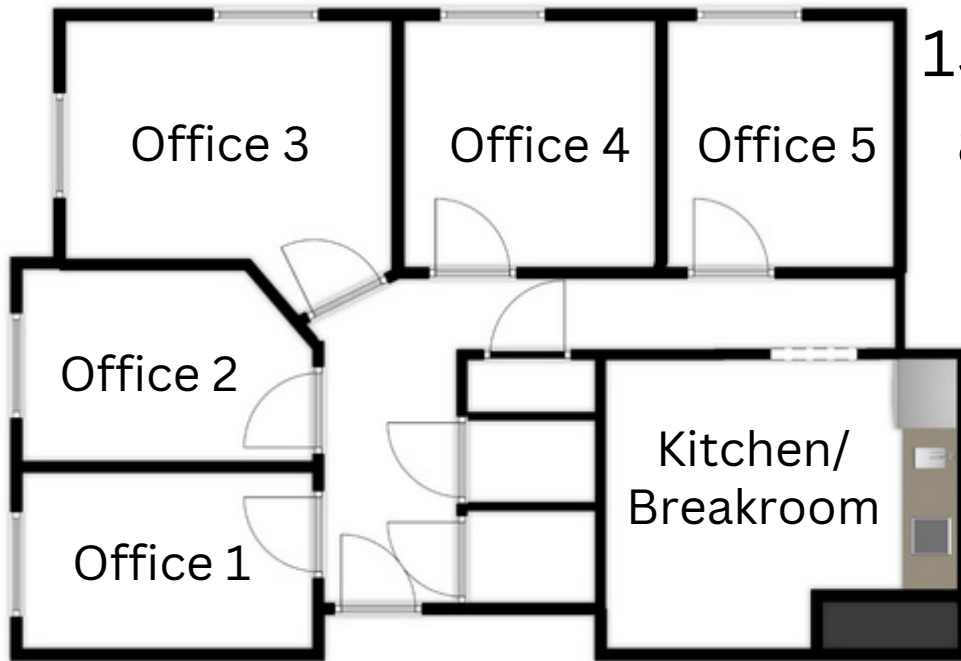


## The Gates at Sugarloaf

1325 Satellite Blvd. Building 1300. Suwanee, GA 30024

## Floorplan

Suite 1301:  
1500sqft.  
approx.



**For More Information:** Ruby Nash | 770-866-1978 | office: 470-400-9877

[RubyNashrealtor@gmail.com](mailto:RubyNashrealtor@gmail.com)

Information contained herein has been obtained from sources deemed reliable but we cannot guarantee its accuracy. No liability is assumed for errors or omissions

# FOR LEASE



## The Gates at Sugarloaf

1325 Satellite Blvd. Building 1300. Suwanee, GA 30024



Office 1



Office 2



Office 3



Hallway



Corner Office



Corner Office



Office 5



Kitchen/Breakroom



**For More Information:** Ruby Nash | 770-866-1978 | office: 470-400-9877

[IRubyNashrealtor@gmail.com](mailto:IRubyNashrealtor@gmail.com)

Information contained herein has been obtained from sources deemed reliable but we cannot guarantee its accuracy. No liability is assumed for errors or omissions