



WAREHOUSE FOR LEASE

PROPERTY TYPE: **INDUSTRIAL**

LEASE RATE: **\$16.50/SF NNN (EST. \$9.00 FOR 2024)**

AVAILABLE: **7,056 SF**

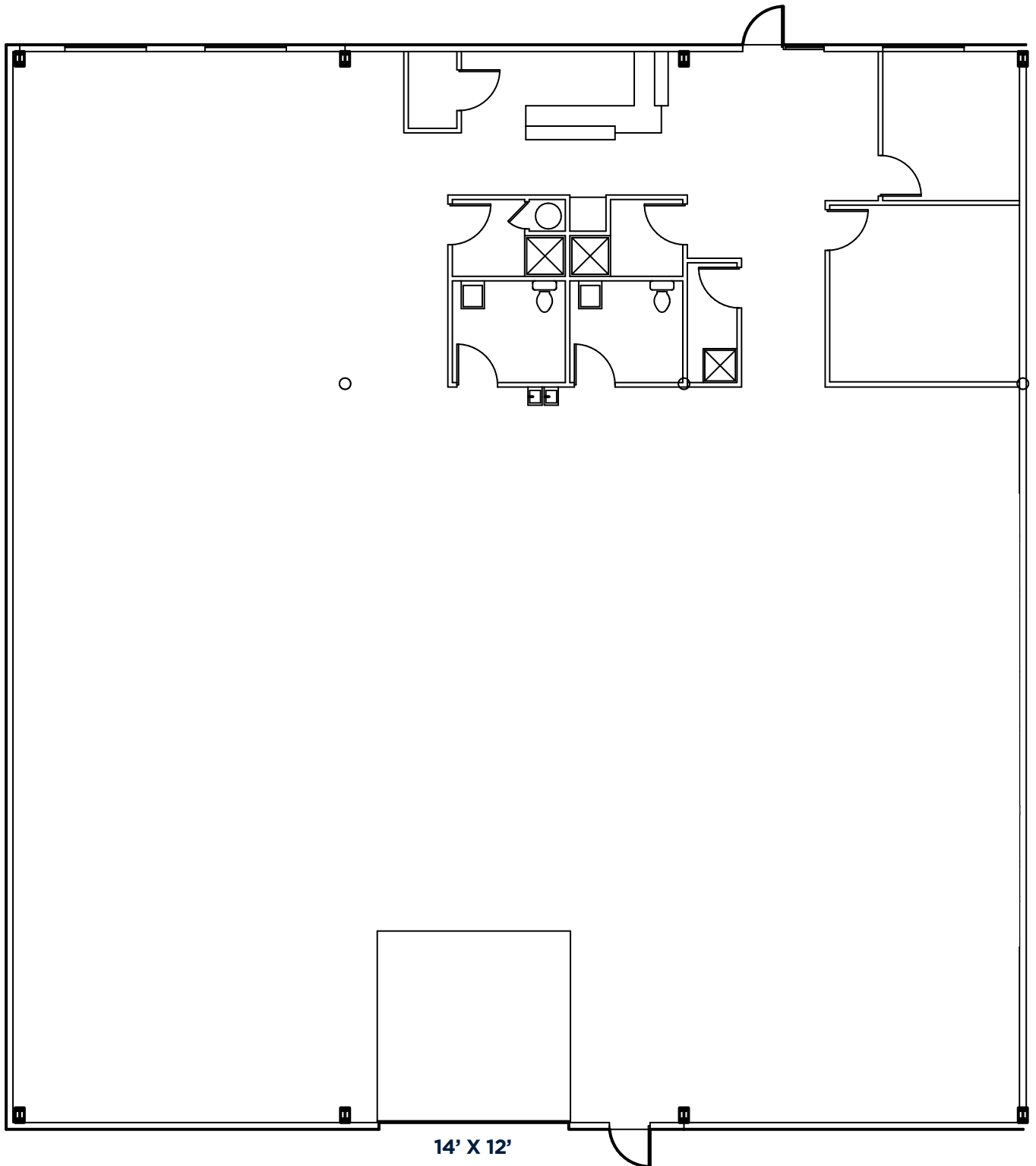
FEATURES:

- Centrally located with easy I-25 access
- Efficient layout with clear heights up to 25'
- Fully air conditioned
- 14' x 12' overhead door
- Finished mezzanine, providing bullpen and additional office space



FLOOR PLAN

6820 POWELL STREET • LOVELAND, CO 80538



LOCATION

6820 POWELL STREET • LOVELAND, CO 80538



Fort Collins

712 Whaler's Way, Bld. B, Suite 300
Fort Collins, CO 80525
970.229.9900

Loveland

200 E. 7th Street, Suite 418
Loveland, CO 80537
970.593.9900

Greeley

1711 61st Avenue, Suite 104
Greeley, CO 80634
970.346.9900

REALTEC
COMMERCIAL REAL ESTATE SERVICES