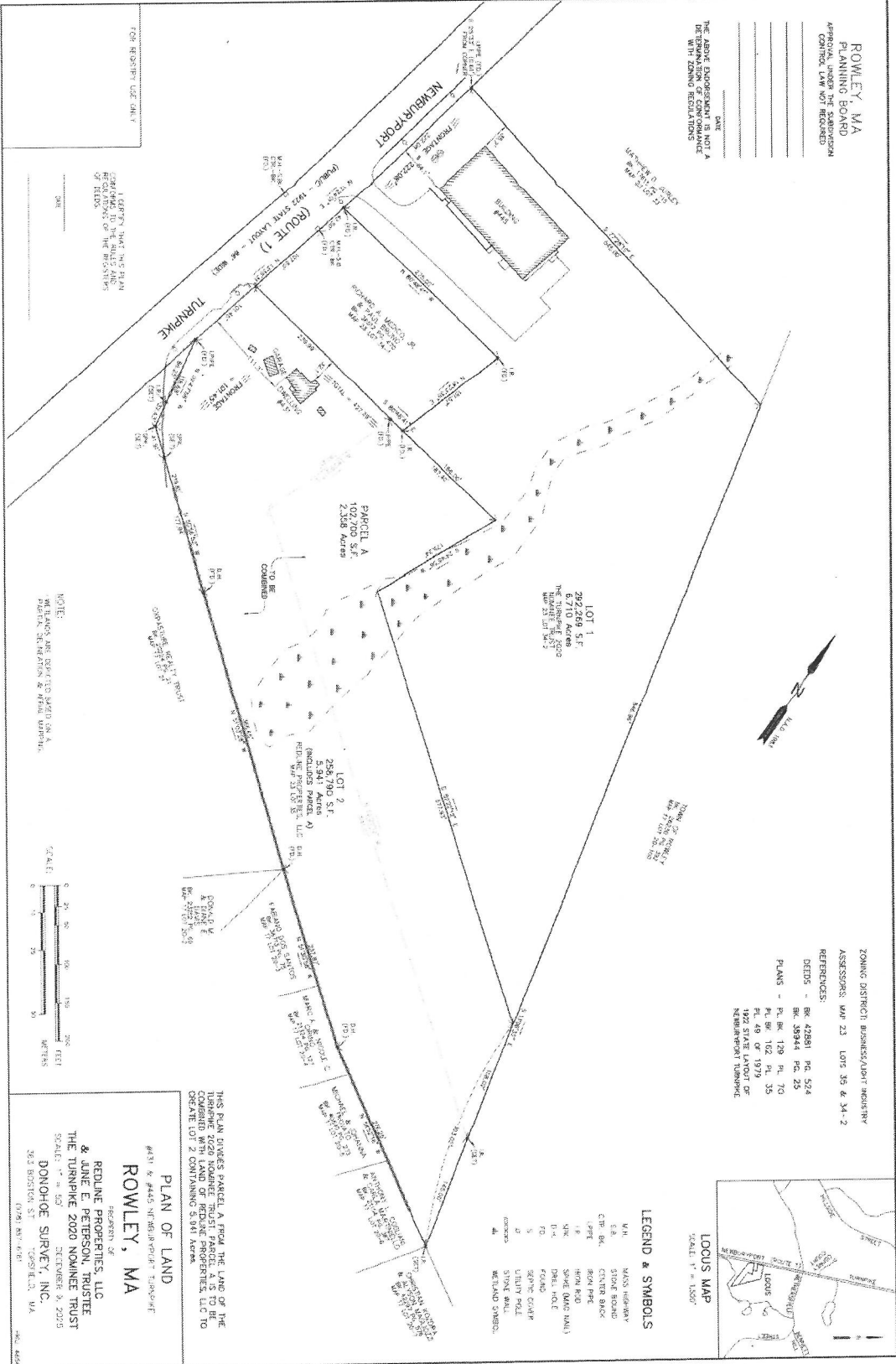
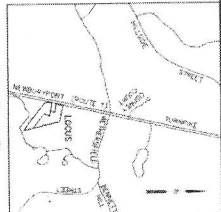


ROWLEY, MA
 PLANNING BOARD
 APPROVAL UNDER THE SUBDIVISION
 CONTROL LAW OF 1966

DATE: _____
 THE ABOVE EXPOSURE IS NOT A
 DEED WITH ZONING REGULATIONS



ZONING DISTRICT: BUSINESS/INDUSTRY
 ASSESSORS: MAP 23 LOTS 35 & 34-2
 REFERENCES:
 DEEDS - BK 42581 PG. 524
 BK 39544 PG. 25
 PLANS - PL BK 129 PL. 70
 PL BK 102 PL. 35
 PL 49 OF 1979
 1922 STATE LANDLOT OF
 NEWBURYPORT TURNPIKE



- LEGEND & SYMBOLS**
- W.H. WATER HIGHWAY
 - E.B. STONE BOUND
 - C.T. BK. CENTER BLOCK
 - L.P.P. LOT
 - R.O.N. ROAD
 - U.P. UTILITY POLE
 - D.B.-H. DRILL HOLE
 - F.O. FOUND
 - S. SERVICE CONDUIT
 - U. UTILITY POLE
 - D. DRIVE
 - S.W. STONE WALL
 - M. MEADOW SYMBOL

NOTE:
 MEASUREMENTS ARE TO CENTER OF
 PIPES OR MARKERS & OTHER OBJECTS



THIS PLAN DIVIDES PARCEL A FROM THE LAND OF THE
 TURNPIKE 2020 NOMINEE TRUST. PARCEL A IS TO BE
 COMBINED WITH LAND OF THE TURNPIKE 2020
 NOMINEE TRUST TO FORM PARCEL B.

PLAN OF LAND
 ROWLEY, MA

REDELINE PROPERTIES, LLC
 TRUSTEE OF
 & ALINE E. PETERSON, TRUSTEE
 THE TURNPIKE 2020 NOMINEE TRUST
 SCALE: 1" = 50'
 DECEMBER 3, 2025
 DONOHUE SURVEY, INC.
 563 DONOHUE ST., WENDELL, MA 01984
 (978) 897-4361

FOR REVISION USE ONLY