



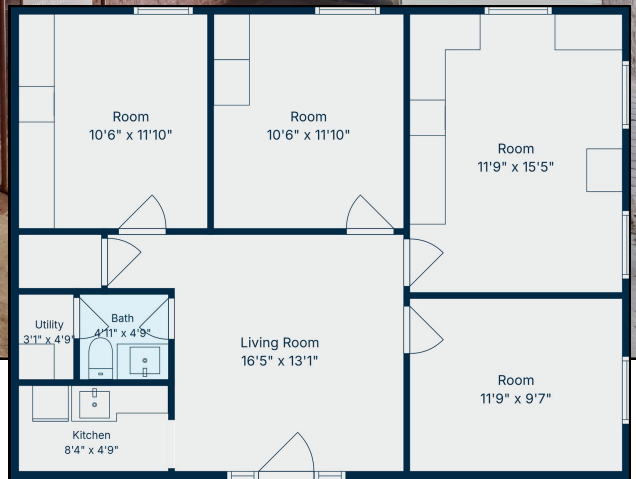
FOR SALE

425 E CROSSVILLE ROAD | ROSWELL, GA 30075

\$234,900

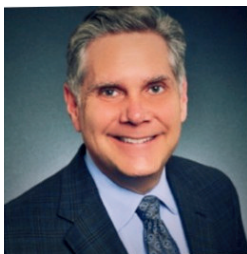
**BERKSHIRE
HATHAWAY**
HOMESERVICES

GEORGIA
PROPERTIES



PROPERTY HIGHLIGHTS

- 980 Sq. Ft
- Traffic Count: 47,600
- Demographics: Population 94,000 | Households 32,746 | Average Household Income \$108,700
- Built in 1983 | All Brick Building
- Minutes from 400 and Hwy 9. Highly accessible location near the heart of Roswell. Easy access to dining, retail, banking and professional services.



DAN WOODLEY
 REALTOR®

C: (404) 456-8313
 O: (770) 475-0505
 Dan.Woodley@bhhsgeorgia.com
 DanWoodley.bhhsgeorgia.com



Call Today.
Learn More.

SCAN HERE

Alpharetta Office | 33 South Main Street, Suite 201 | Alpharetta, GA 30009 | (404) 456-8313