

- Opportunity for a turn-key dealership/equipment rental or repurposing for many possible uses.
- For Sale: \$4,800,000
- For Lease: \$16.75/SF NNN

Highlights:

- Improvements:

Showroom & Office: ~ 6,277 SF

Warehouse: ~ 15,127 SF

Total: ~ 21,404 SF

- Approximately 4.2 Acres
- Zoned MUCD - Mixed Use Commercial District
- Centrally located to service the Westbank and 20 min. to Downtown N.O.
- Traffic counts of 44,000 vehicles per day on Lapalco Blvd.



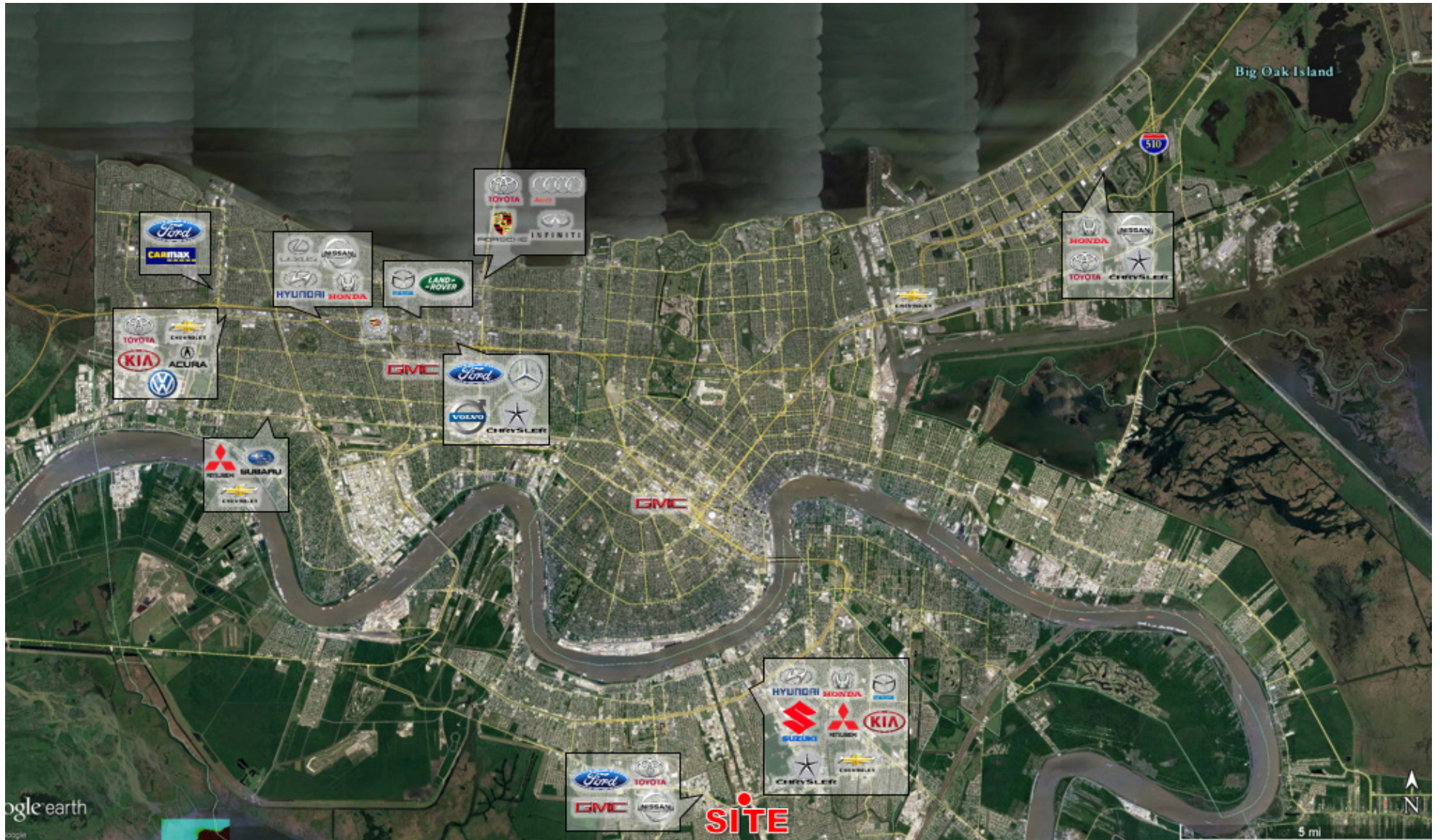
Matt Pittman

504.322.1275 | mpittman@beaubox.com

400 Poydras, Suite 1900, New Orleans, LA. 70130 | 504.525.1410 | www.beaubox.com

Broker of Record, Beau J. Box; Licensed by the Louisiana Real Estate Commission, Mississippi Real Estate Commission, and Alabama Real Estate Commission, USA. This information has been secured from sources we believe to be reliable, but we make no representations or warranties, expressed or implied, as to the accuracy of the information. References to square footage or age are approximate. Buyer must verify the information and bears all risk for any inaccuracies.

© Beau Box Commercial Real Estate. January 3, 2017 2:32 PM



Matt Pittman

504.322.1275 | mpittman@beaubox.com

400 Poydras, Suite 1900, New Orleans, LA. 70130 | 504.525.1410 | www.beaubox.com

Broker of Record, Beau J. Box; Licensed by the Louisiana Real Estate Commission, Mississippi Real Estate Commission, and Alabama Real Estate Commission, USA. This information has been secured from sources we believe to be reliable, but we make no representations or warranties, expressed or implied, as to the accuracy of the information. References to square footage or age are approximate. Buyer must verify the information and bears all risk for any inaccuracies.

© Beau Box Commercial Real Estate. January 3, 2017 2:32 PM



Former Car Dealership

3611 Lapalco Blvd, Harvey, LA 70058

Overview

Location

Map

Images



Matt Pittman

504.322.1275 | mpittman@beaubox.com

400 Poydras, Suite 1900, New Orleans, LA. 70130 | 504.525.1410 | www.beaubox.com

Broker of Record, Beau J. Box; Licensed by the Louisiana Real Estate Commission, Mississippi Real Estate Commission, and Alabama Real Estate Commission, USA. This information has been secured from sources we believe to be reliable, but we make no representations or warranties, expressed or implied, as to the accuracy of the information. References to square footage or age are approximate. Buyer must verify the information and bears all risk for any inaccuracies.

© Beau Box Commercial Real Estate. January 3, 2017 2:32 PM