

FOR LEASE

Troop Drive Office 2151 Troop Drive, Sartell, MN 56377



PROPERTY DESCRIPTION

Rare office space opportunity in Sartell, MN. Property is located right off of the highly traveled Pinecone Road. Location is only 1.5 miles from Highway 15. Second floor space available with a layout that includes 4 large private offices and a conference room.

PROPERTY HIGHLIGHTS

- Professionally finished office.
- Large windows providing ample natural light.
- Monument sign available for business name.
- Easy access from client parking to suites front door.
- Layout includes 5 large private rooms that can be utilized as offices and conference space.

OFFERING SUMMARY

Lease Rate:	\$2,000.00 per month (Gross)
Available SF:	1,232 SF
Building Size:	2,464 SF

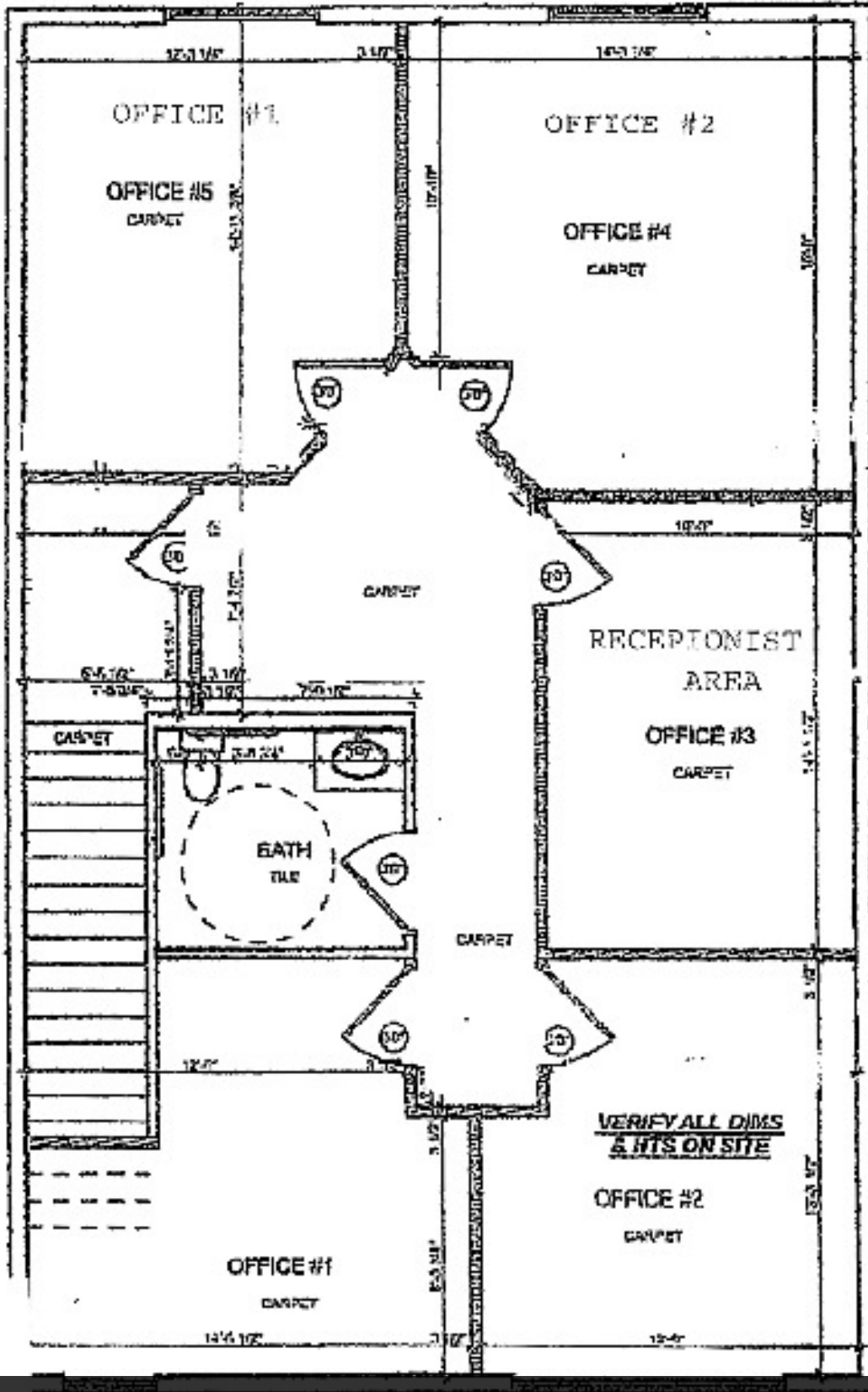


Maria Berdan
Senior Associate - Brokerage
320.493.1723
mariab@gcremn.com

FOR LEASE

Troop Drive Office

2151 Troop Drive, Sartell, MN 56377



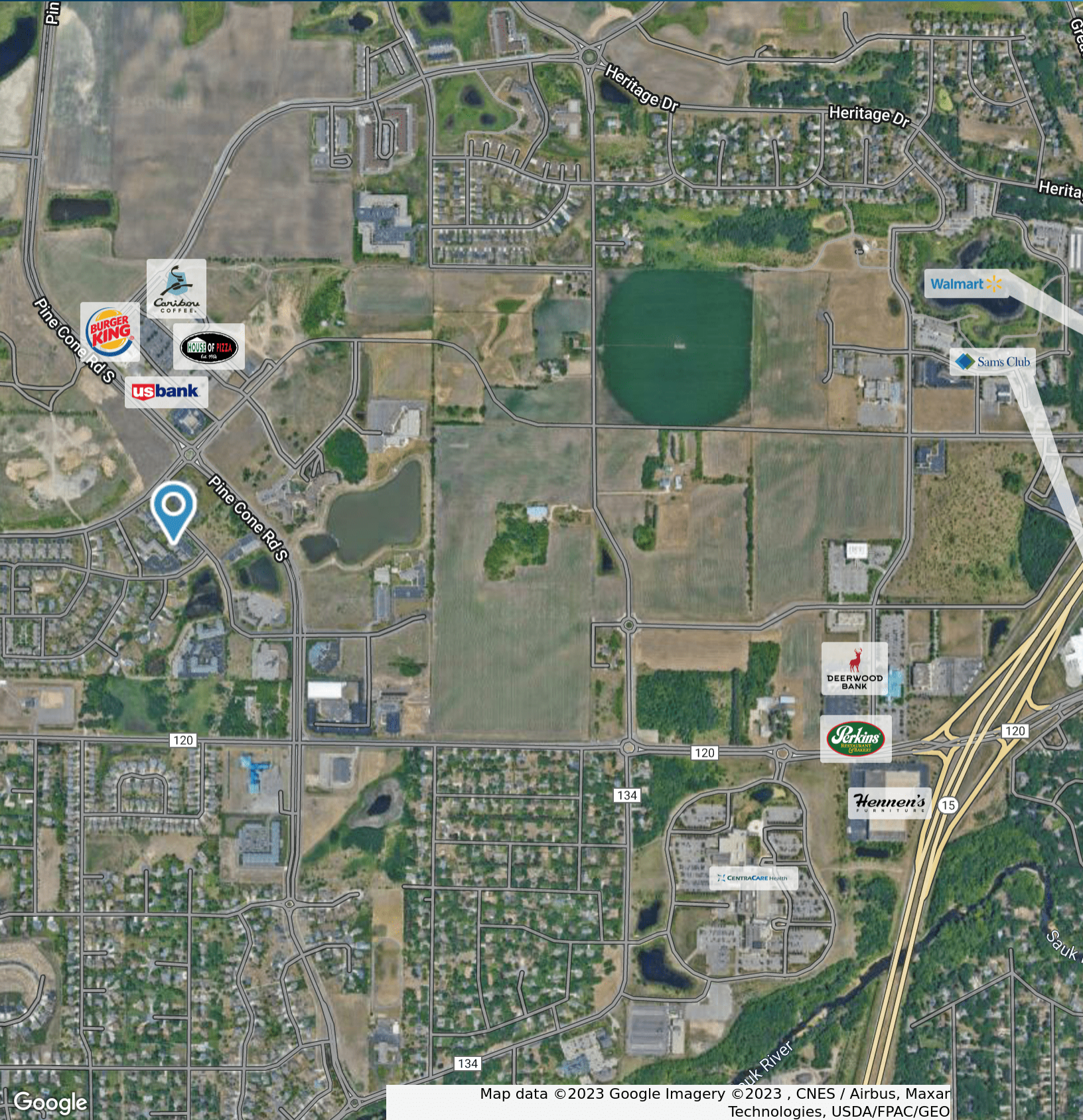
1st Floor



Maria Berdan
Senior Associate - Brokerage
320.493.1723
mariab@gcremn.com

FOR LEASE

Troop Drive Office 2151 Troop Drive, Sartell, MN 56377



Map data ©2023 Google Imagery ©2023, CNES / Airbus, Maxar Technologies, USDA/FPAC/Geo



Maria Berdan
Senior Associate - Brokerage
320.493.1723
mariab@gcremn.com