

AVAILABLE
FOR LEASE

9301 SANTA FE MEDICAL BUILDING

9301 W 74TH STREET | MERRIAM, KS 66204



OWNED AND MANAGED BY **welltower**

CBRE

www.cbre.us/kansascity

KEITH BAKER, CCIM

First Vice President
+1 816 968 5883
keith.baker@cbre.com

COLLEEN MCPHERSON ROBLE

Investment Properties, Healthcare
+1 816 968 5859
colleen.mcpherson@cbre.com

ELIZABETH TILSON

Client Service Coordinator
+1 816 968 5809
elizabeth.tilson@cbre.com

LAUREN STINDT

Client Service Assistant
+1 816 968 5853
lauren.stindt@cbre.com

**AVAILABLE SUITE:**

5,092 SF

BUILDING SIZE:

80,571 SF - 3 Floors

PROPERTY DESCRIPTION:

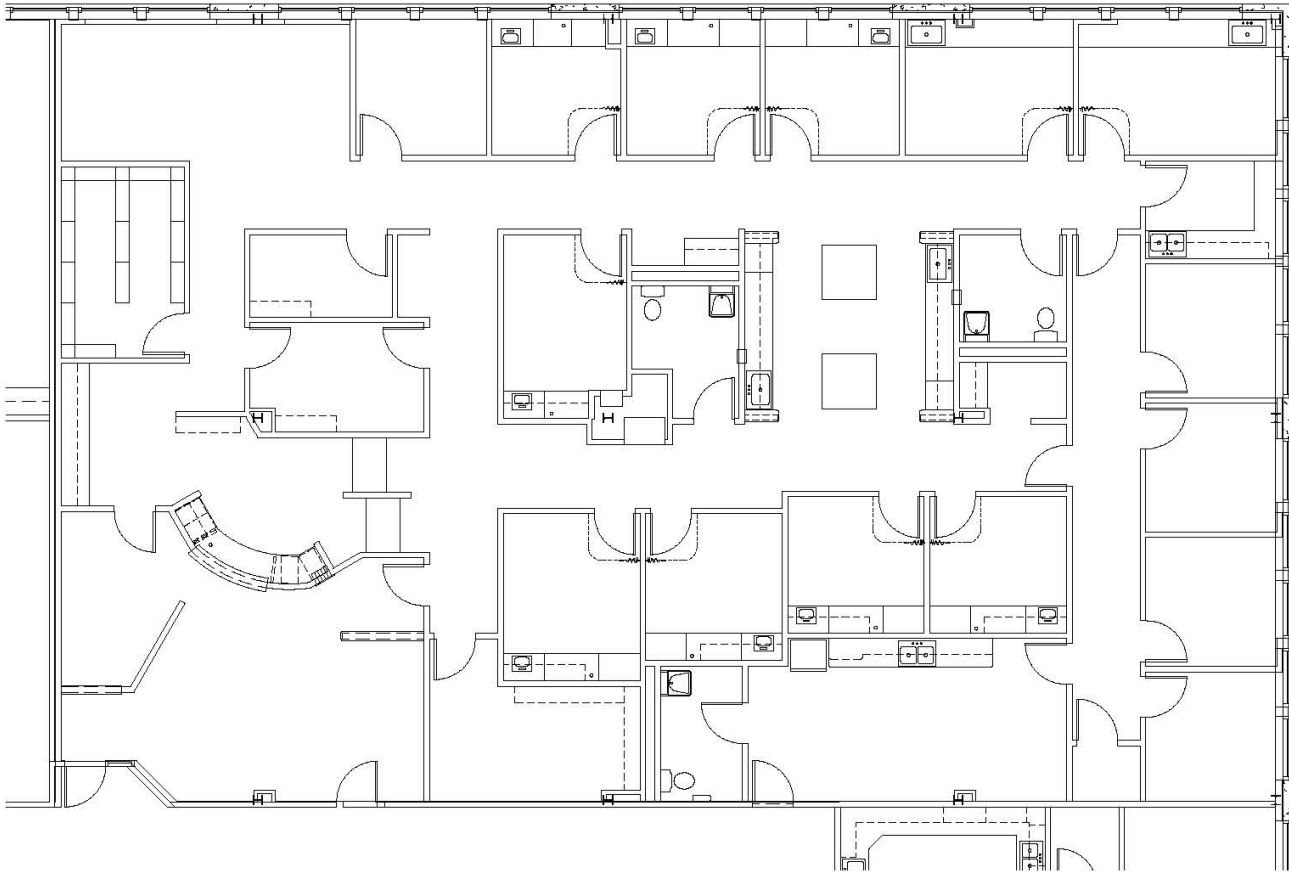
- On-Campus Class A Medical Office Building
- Immediate Access to I-35 off 75th Street
- Hospital Campus That Serves All of North Johnson County
- 5,921 SF Available - Second Floor
- Join These Specialty Practices:
 - Cancer Center
 - Eye Care
 - Surgery Center
 - OBGYN

AERIAL



FLOOR PLAN

SANTE FE BUILDING - SUITE 225



5,921 RSF

© 2020 CBRE, Inc. All rights reserved. This information has been obtained from sources believed reliable, but has not been verified for accuracy or completeness. You should conduct a careful, independent investigation of the property and verify all information. Any reliance on this information is solely at your own risk. CBRE and the CBRE logo are service marks of CBRE, Inc. All other marks displayed on this document are the property of their respective owners, and the use of such logos does not imply any affiliation with or endorsement of CBRE. Photos herein are the property of their respective owners. Use of these images without the express written consent of the owner is prohibited.

KEITH BAKER, CCIM

First Vice President
+1 816 968 5883
keith.baker@cbre.com

COLLEEN MCPHERSON ROBLE

Investment Properties, Healthcare
+1 816 968 5859
colleen.mcpherson@cbre.com

ELIZABETH TILSON

Client Service Coordinator
+1 816 968 5809
elizabeth.tilson@cbre.com

LAUREN STINDT

Client Service Assistant
+1 816 968 5853
lauren.stindt@cbre.com