

3155 SUTTON BLVD

MAPLEWOOD, MO 63143

1,333 SF
CREATIVE OFFICE SPACE
FOR LEASE

- 1,333 RSF Move-In Ready Suite
- Great Maplewood Location
- Creative Office Space
- Class A Building Constructed in 2006
- Elevator Served
- 4/1,000 SF Surface Parking
- Lease Rate: \$19.75 PSF, Full Service, Excluding Janitorial

FOR MORE INFORMATION CONTACT:

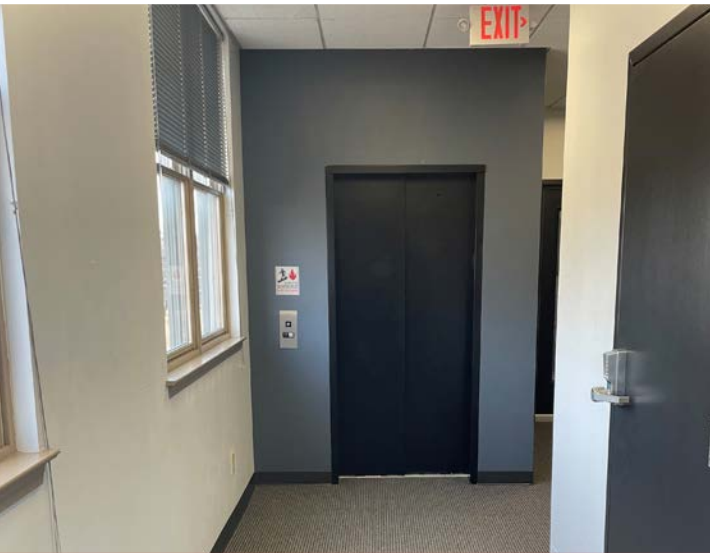
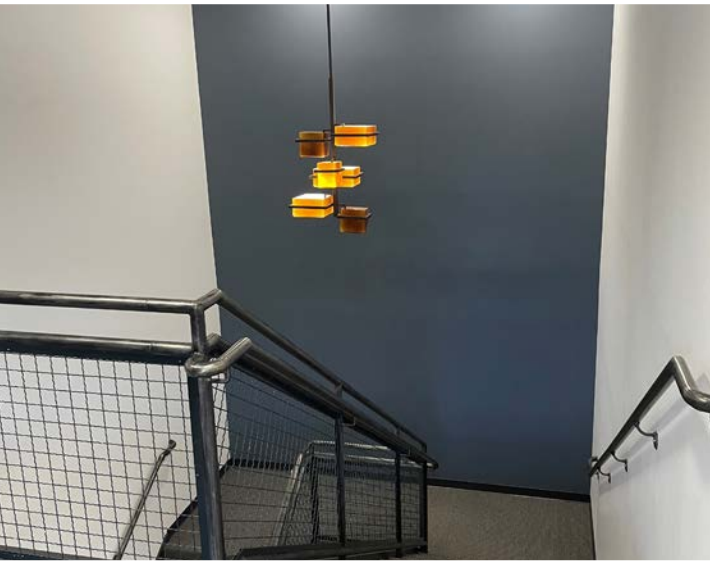
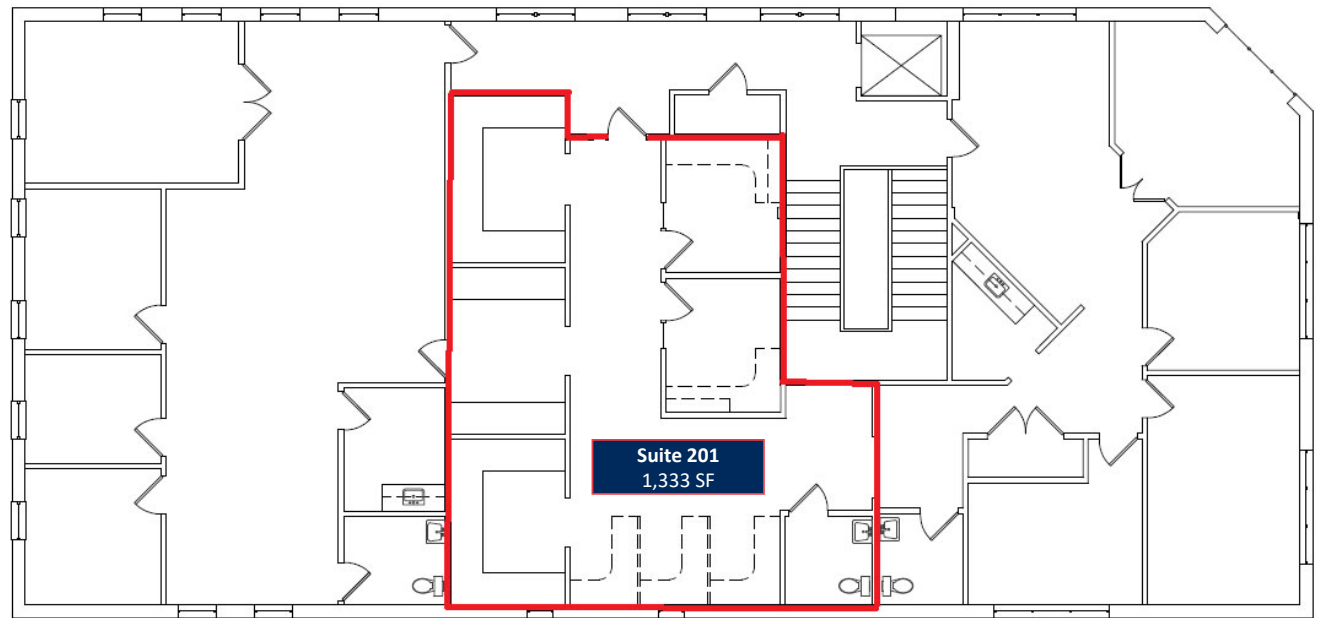
DAN FREELAND, CCIM, SIOR • 314-889-0605

JIM LOFT, CCIM, SIOR • 314-696-1400

FALLON CHAMBERS • 314-746-1425



3155 SUTTON BLVD



The information contained herein is not warranted, although it has been obtained from the owner of the property or from other sources we deem reliable. It is subject to change without notice. Owner and broker make no representation as to the environmental condition of the property and recommend purchaser's/tenant's independent investigation.

FOR MORE INFORMATION, CONTACT:

JIM LOFT, CCIM, SIOR • 314-969-1400
jloft@gershmancommercial.com

DAN FREELAND, CCIM, SIOR • 314-889-0605
dfreeland@gershmancommercial.com

FALLON CHAMBERS • 314-746-1425
fchambers@gershmancommercial.com

