

DOMINION ENERGY BUILDING

333 STATE STREET | SALT LAKE CITY, UT 84111



QUESTAR

For Leasing Information, Please Contact:

John Dahlstrom

801.961.1102

jdahlstrom@netwasatch.com



WASATCH
COMMERCIAL MANAGEMENT

DOMINION ENERGY BUILDING

333 STATE STREET | SALT LAKE CITY, UT 84111

SUMMARY

Leasing Space Available				
Floor	Suite	RSF	Rate/YR	Notes
2nd		35,842		
Total		35,842		



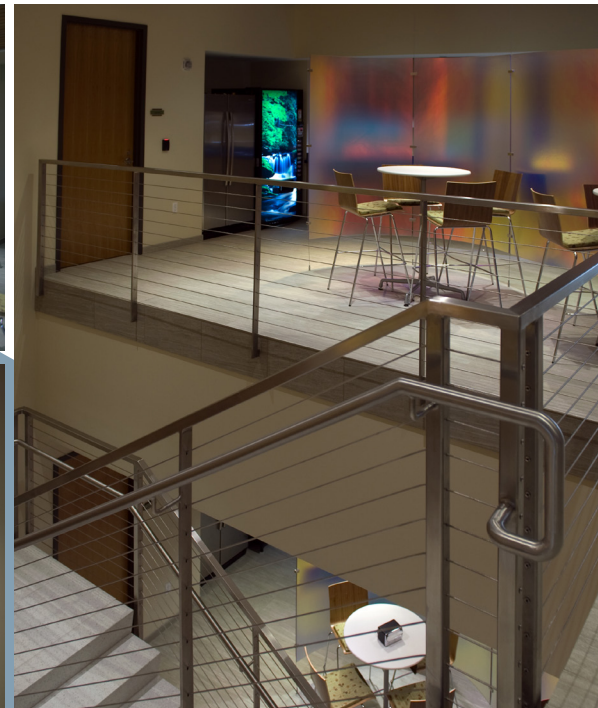
For Leasing Information, Please Contact:
John Dahlstrom
801.961.1102
jdahlstrom@netwasatch.com

DOMINION ENERGY BUILDING

333 STATE STREET | SALT LAKE CITY, UT 84111

BUILDING FEATURES

- Class “A” Office Space LEED-Certified
- Within walking distance of City Creek
- 66 parking stalls available
- Nearby TRAX and Bus Stops
- Close Access to I-15 & I-80
- Onsite Property Management
- Tenant Improvements available

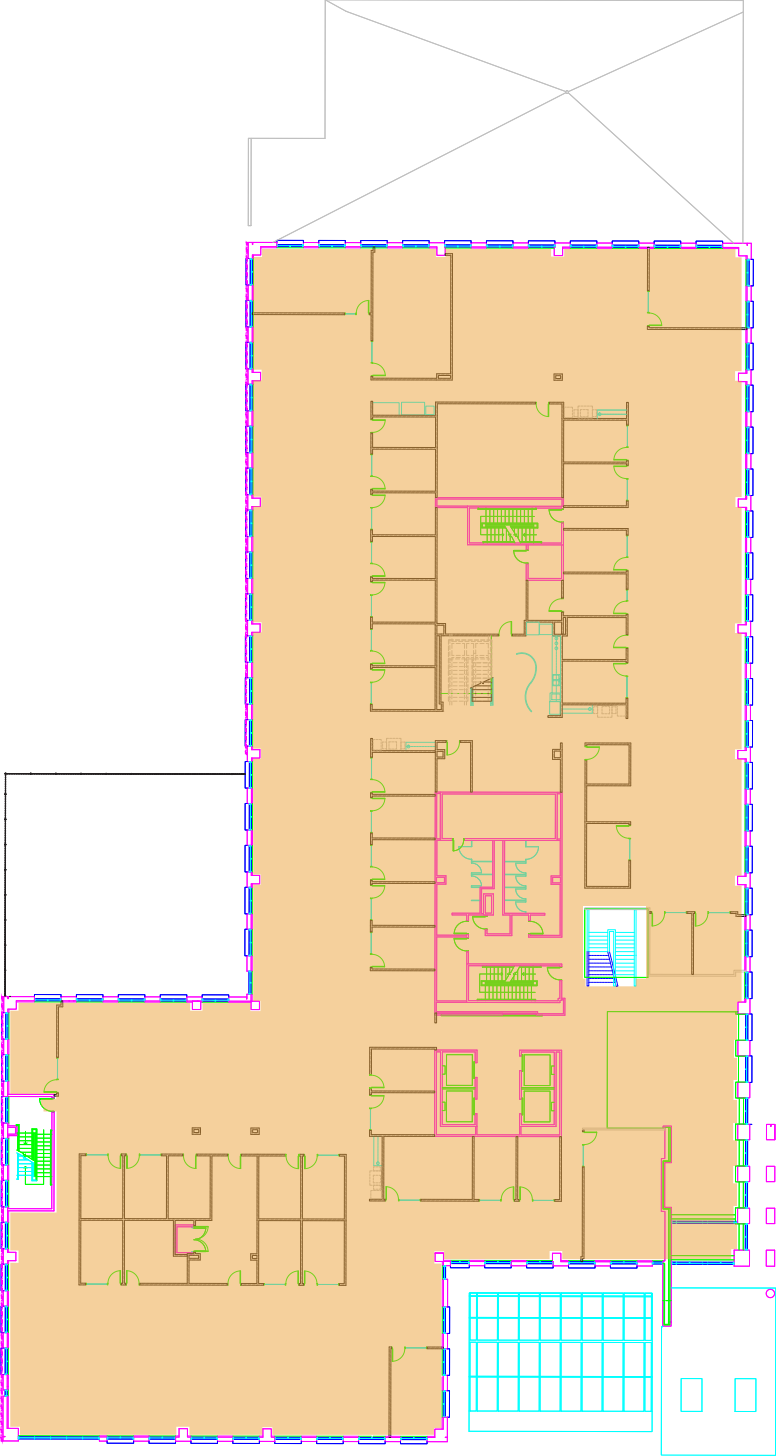


DOMINION ENERGY BUILDING

333 STATE STREET | SALT LAKE CITY, UT 84111

2ND FLOOR

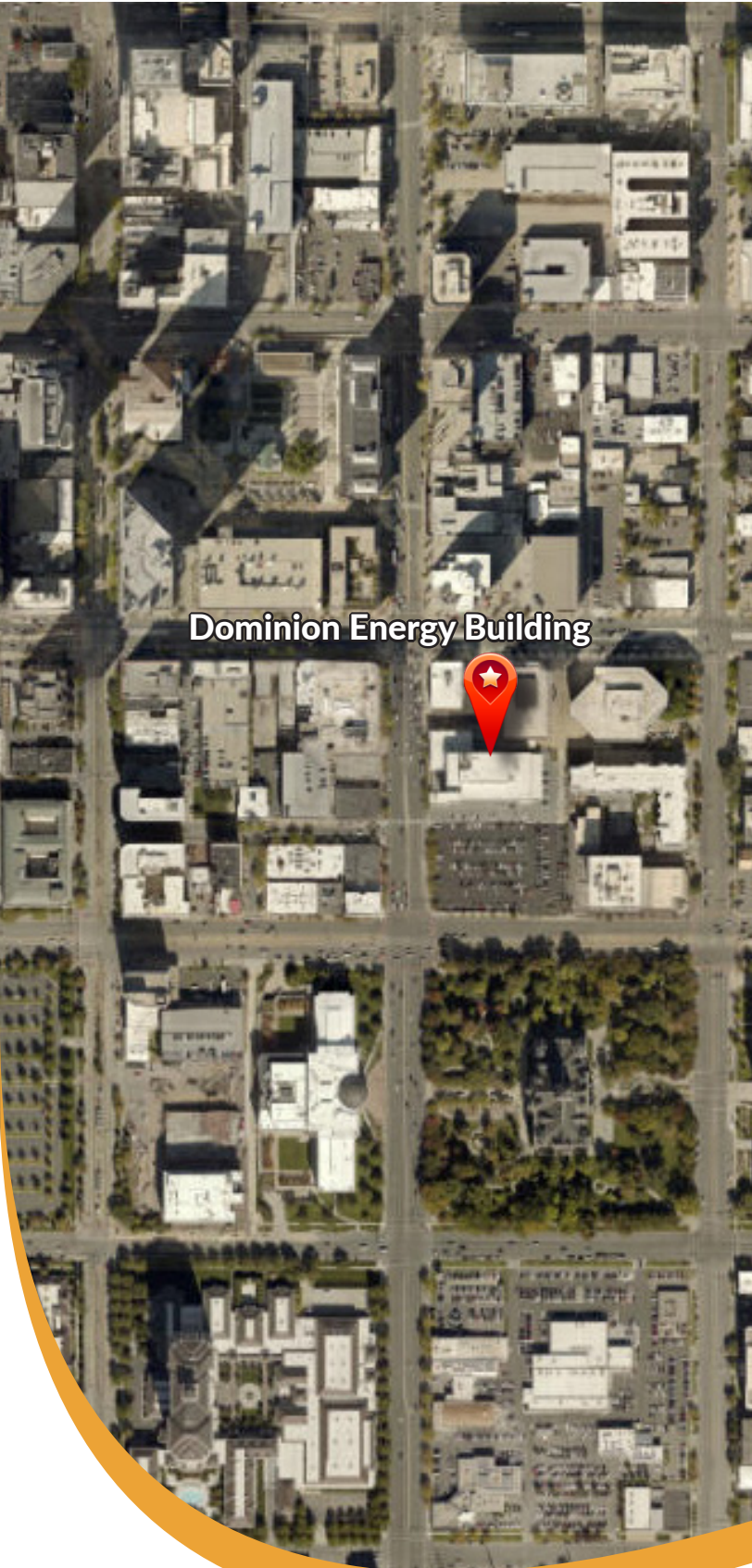
35,842 SF



For Leasing Information, Please Contact:
John Dahlstrom
801.961.1102
jdahlstrom@netwasatch.com

DOMINION ENERGY BUILDING

333 STATE STREET | SALT LAKE CITY, UT 84111



Dominion Energy Building



WASATCH
COMMERCIAL MANAGEMENT