

INDUSTRIAL/FLEX FOR LEASE: 5,247 SF

5400 Tech Circle, Moorpark, CA 93021



PROPERTY FEATURES:

- 5,247 SF Industrial / Flex Office Available
- Currently 85% Office / 15% Warehouse
- Two (2) Roll Up Doors Possible (Tenant to verify)
- Includes Five Offices
- Conference Room
- Full Kitchen Area
- Two Restrooms
- Immediate Occupancy



EXCLUSIVE AGENTS:

PAUL FORBAT

(805) 328-6348

paul@pciirealty.com

CAL DRE # 01097663

JUDY PITMAN

(805) 328-6359

judy@pciirealty.com

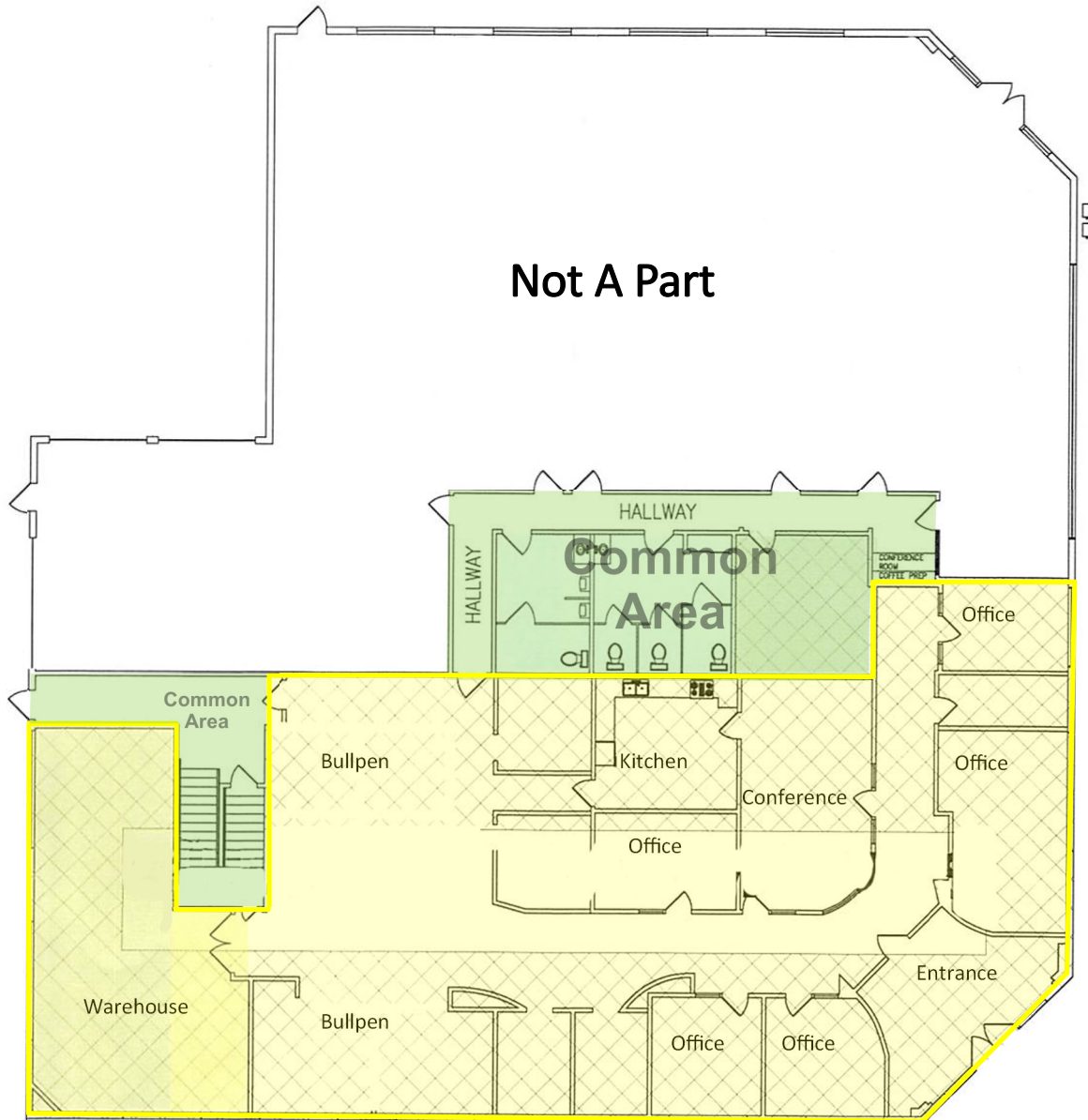
CAL DRE # 02109875

Disclaimer: Information contained herein is obtained from sources considered reliable but is not verified; the property owner and agent make no representation or warranty regarding its accuracy, express or implied. Prospective purchasers and lessees are responsible to conduct their own independent due diligence regarding the property and its suitability for their intended use, and are advised to consult with qualified professionals regarding tax, legal and other consequences of any transaction. All information is subject to errors, omissions, changes of price, terms or other conditions, prior sale, lease or financing, or withdrawal from the market without notice. All measurements are approximate. Logos are intended only to show the proximity of select businesses to the subject property, and do not imply endorsement. Offered for sale or lease exclusively by PCI Commercial Realty Group, CAL DRE # 01888984.

INDUSTRIAL/FLEX FOR LEASE: 5,247 SF

5400 Tech Circle, Moorpark, CA 93021

Current Floorplan



EXCLUSIVE AGENTS:

PAUL FORBAT
(805) 328-6348
paul@pciirealty.com
CAL DRE # 01097663

JUDY PITMAN
(805) 328-6359
judy@pciirealty.com
CAL DRE # 02109875



Disclaimer: Information contained herein is obtained from sources considered reliable but is not verified; the property owner and agent make no representation or warranty regarding its accuracy, express or implied. Prospective purchasers and lessees are responsible to conduct their own independent due diligence regarding the property and its suitability for their intended use, and are advised to consult with qualified professionals regarding tax, legal and other consequences of any transaction. All information is subject to errors, omissions, changes of price, terms or other conditions, prior sale, lease or financing, or withdrawal from the market without notice. All measurements are approximate. Logos are intended only to show the proximity of select businesses to the subject property, and do not imply endorsement. Offered for sale or lease exclusively by PCI Commercial Realty Group, CAL DRE # 01888984.