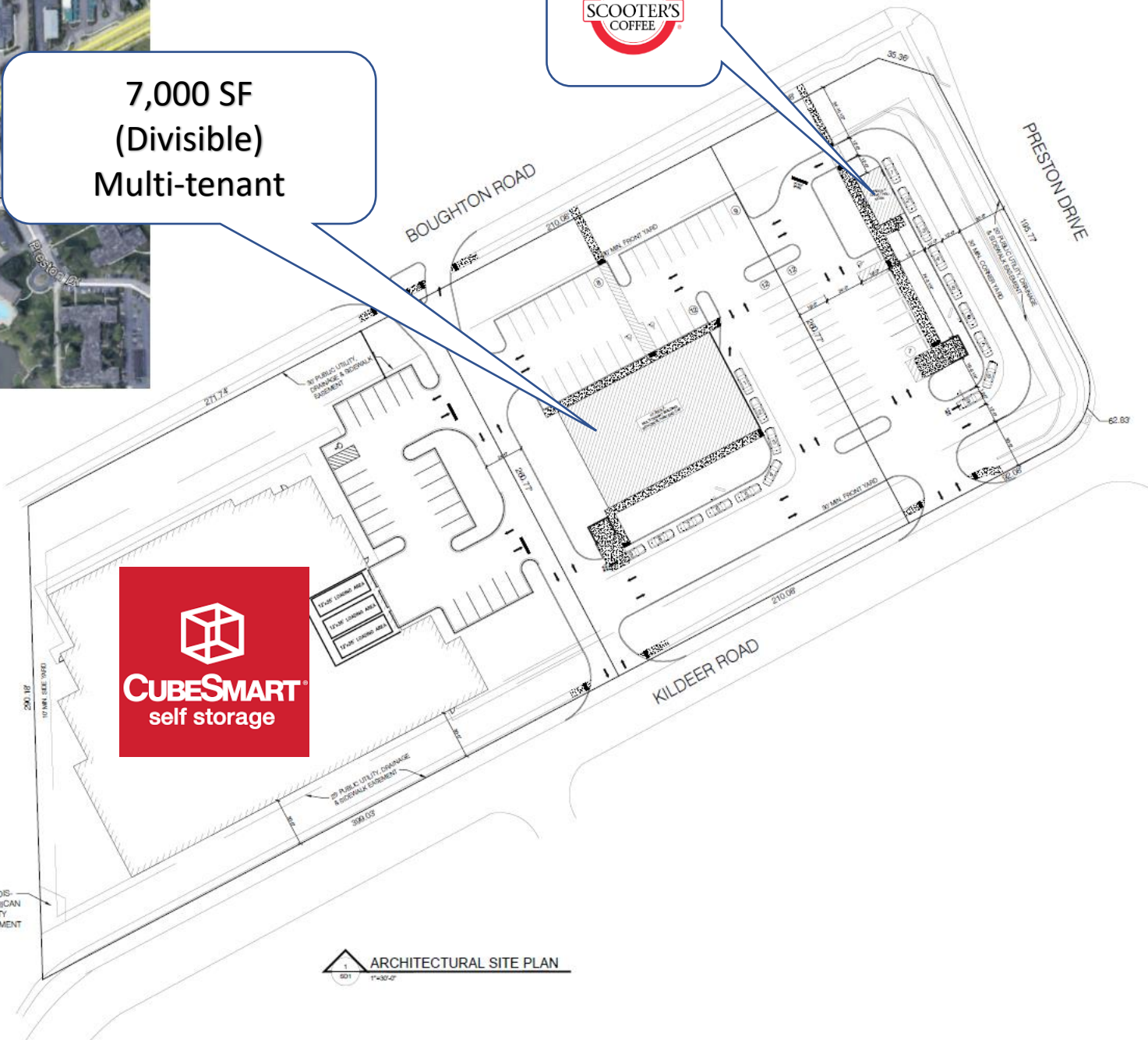




KEY PLAN
SD1
N.T.S.



7,000 SF
(Divisible)
Multi-tenant



ARCHITECTURAL SITE PLAN
SD1
1"=30'-0"



549 E. BOUGHTON RD.
BOLINGBROOK, IL 60440

ISSUE	DATE	REVISION
1		PRELIMINARY SITE PLAN
2		DESCRIPTION
3		DATE

OWNER: AMERICAN UTILITIES
 THESE DOCUMENTS ARE THE PROPERTY OF MRV ARCHITECTS, INC. & ARE NOT TO BE REPRODUCED OR REPRODUCED WITHOUT WRITTEN PERMISSION FROM THE OFFICE.
 DRAWN BY: J. THORNTON
 CHECKED BY: M. VALENTIN
 PROJECT NO: 2024

PREPARED BY
MRV ARCHITECTS, INC.

SD1

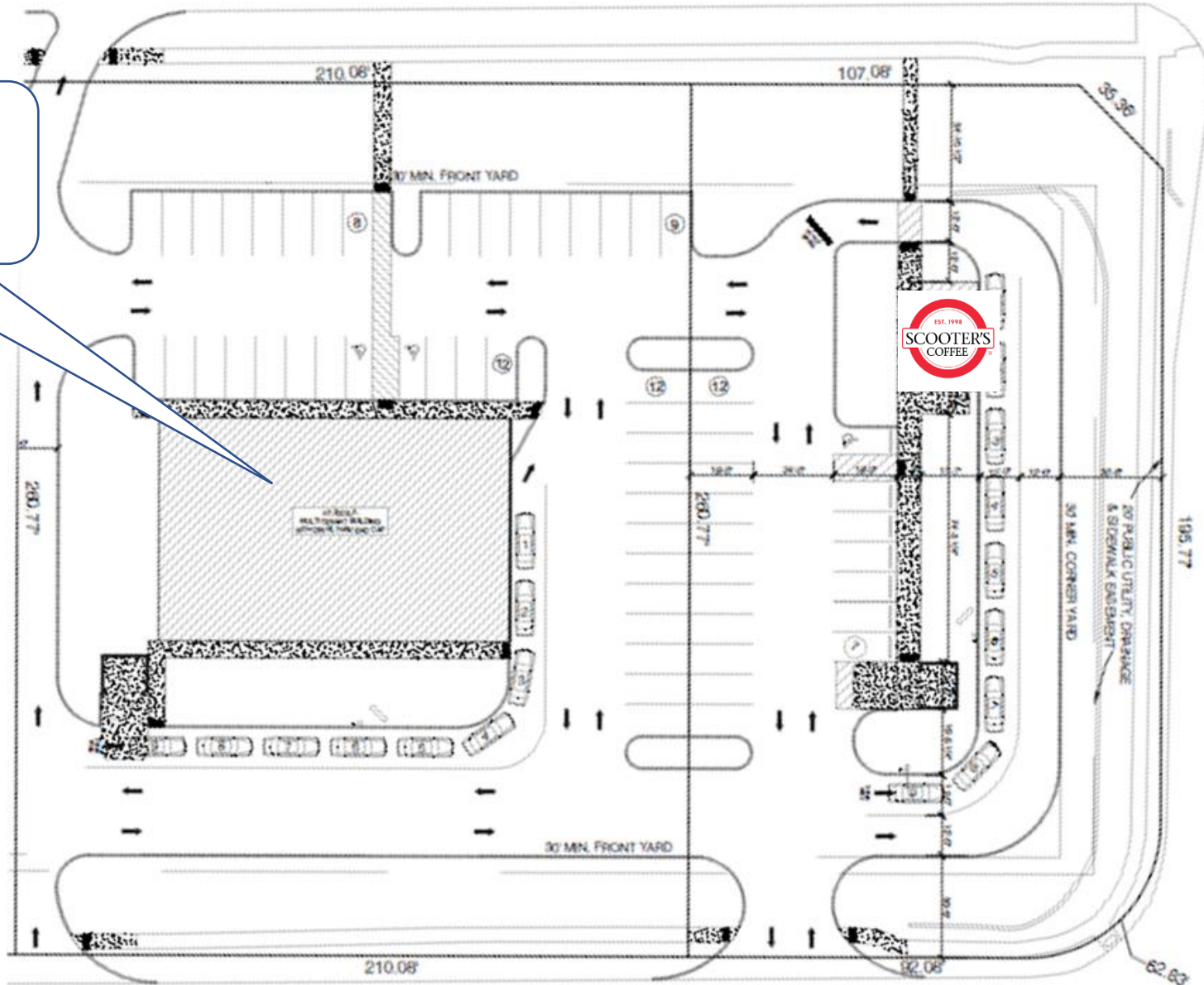
BOUGHTON ROAD

PRESTON DRIVE

KILDEER ROAD



7,000 SF
(Divisible)
Multi-tenant



210.08'

107.08'

35.38'

10' MIN. FRONT YARD

8

9

12

12

12

260.77'

260.77'

195.77'

30' MIN. CORNER YARD

20' PUBLIC UTILITY, OVERHANG & SIDEWALK ENCROACHMENT

30' MIN. FRONT YARD

210.08'

82.08'

62.83'