

FOR LEASE

# 331-333 Rutledge Street

331-333 Rutledge Street, Brooklyn, NY 11211



## Offering Summary

Lease Rate:	Negotiable
Building Size:	22,000 SF
Available SF:	750 SF
Lot Size:	

## Property Overview

Great location  
Right off the G train, and only 2 blocks from the J, M, Z lines  
Food in the area

## Property Highlights

- Beautiful, newly renovated, spacious office
- Nice spacious office
- Kitchenette, conference room, and bathroom
- Elevator and staircase
- Large windows attracting lots of natural light
- Professional tenants in the building
- 1,800 square feet

## Yossi Zicherman

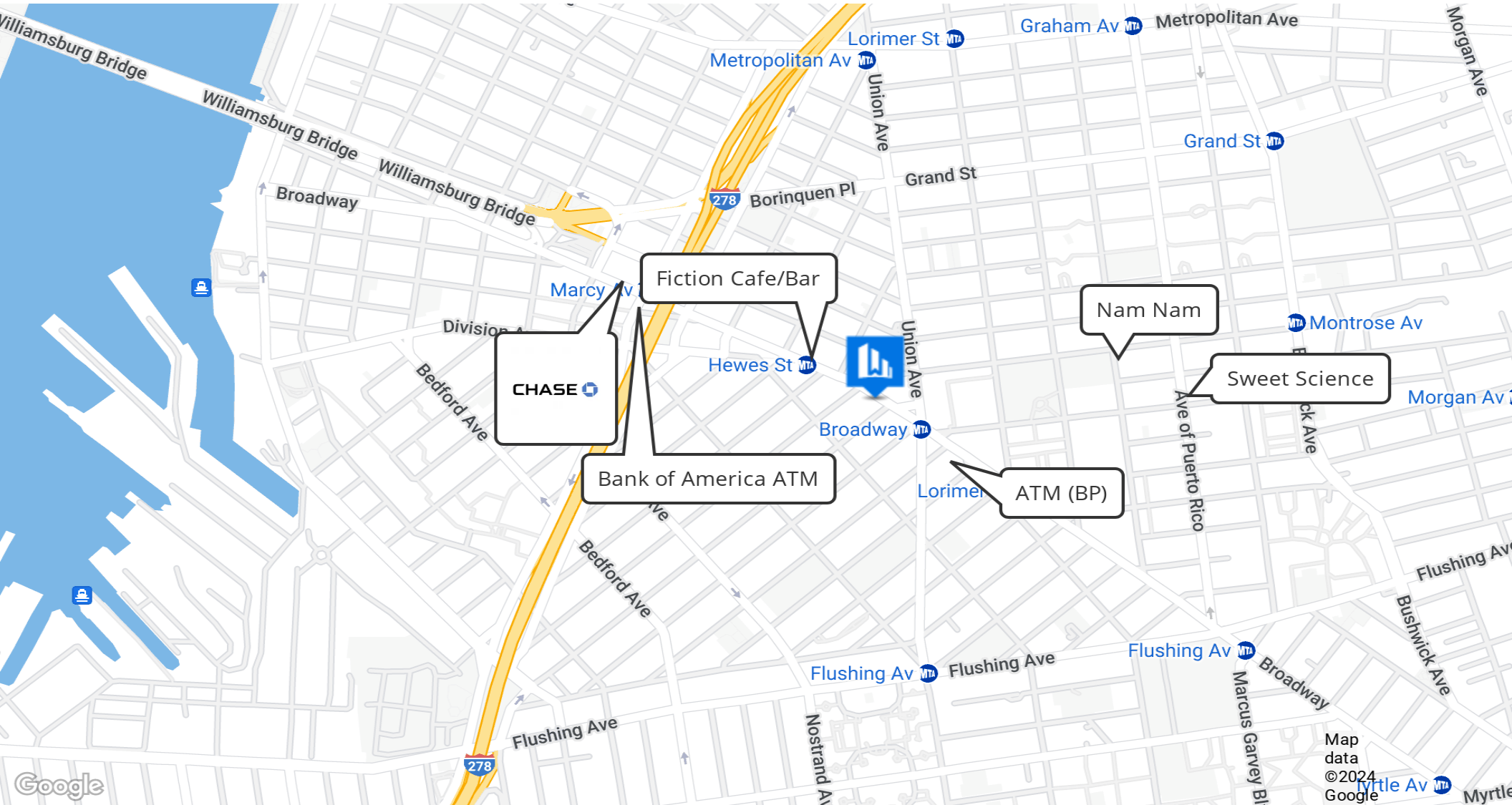
646.461.4000

yossi@workplacerealty.com

FOR LEASE

# 331-333 Rutledge Street

331-333 Rutledge Street, Brooklyn, NY 11211



**Yossi Zicherman**

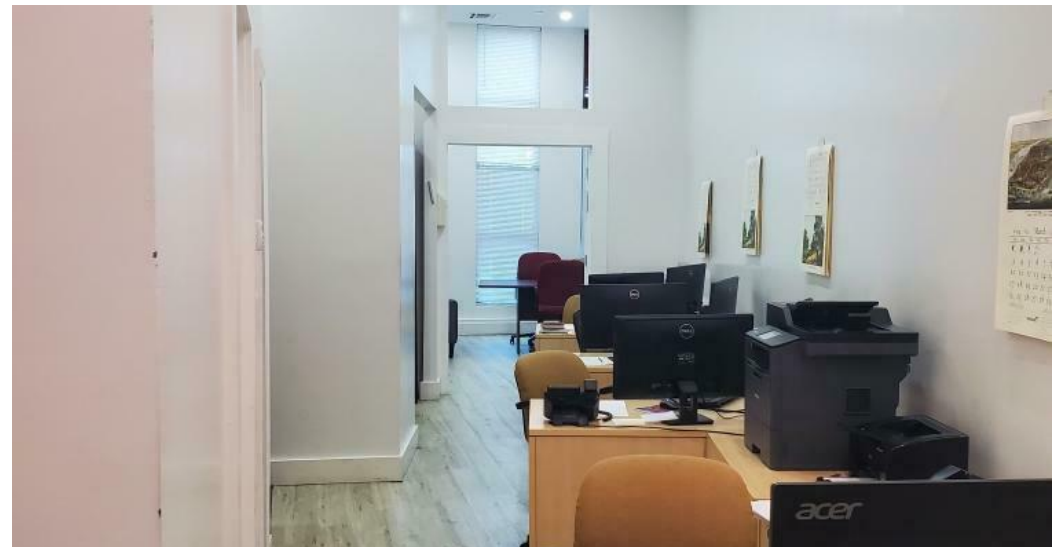
646.461.4000

yossi@workplacerealty.com

FOR LEASE

# 331-333 Rutledge Street

331-333 Rutledge Street, Brooklyn, NY 11211



**Yossi Zicherman**

646.461.4000

yossi@workplacerealty.com

FOR LEASE

# 331-333 Rutledge Street

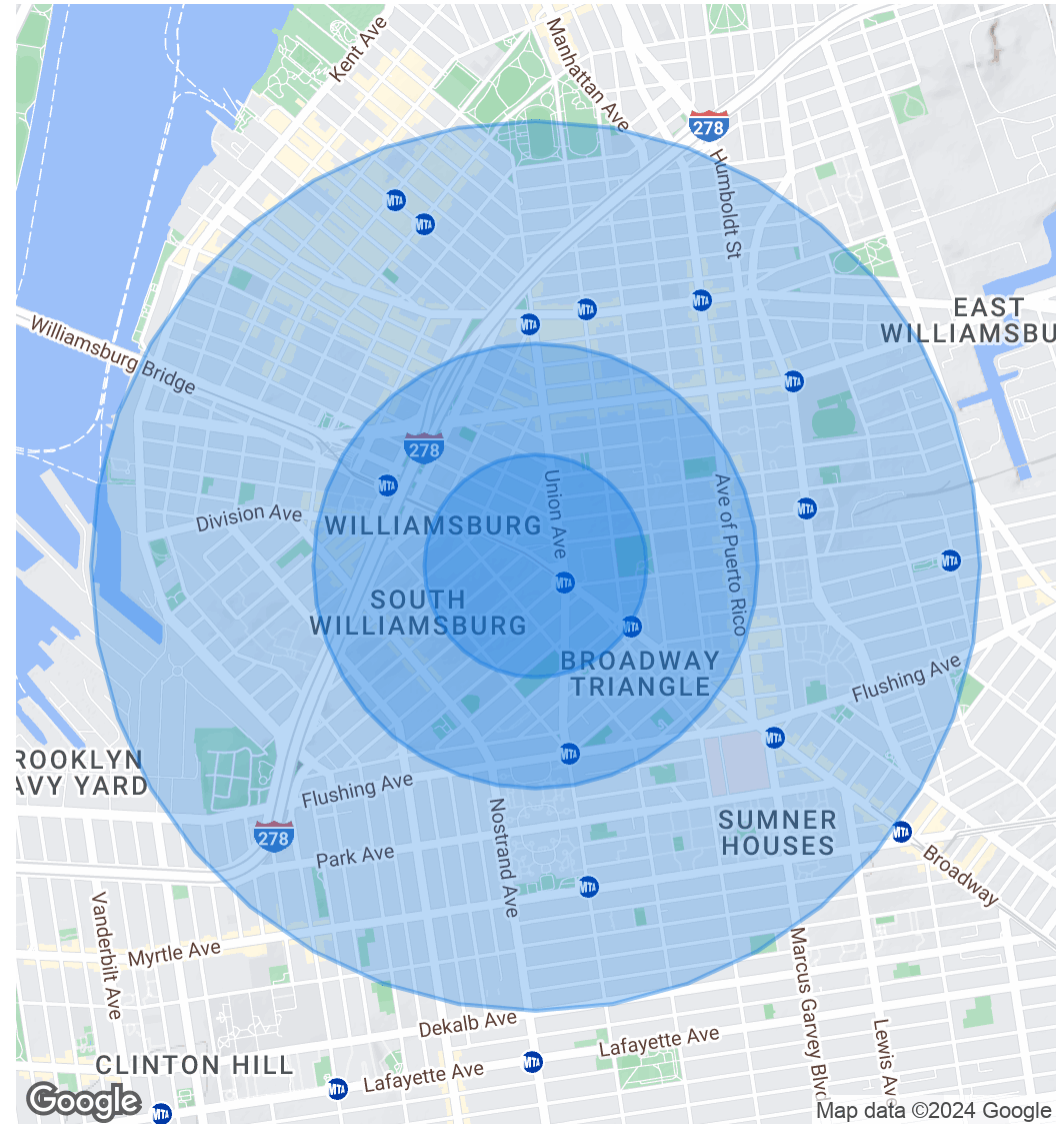
331-333 Rutledge Street, Brooklyn, NY 11211



Population	0.25 Miles	0.5 Miles	1 Mile
Total Population	13,960	54,256	183,129
Average age	24.2	24.3	26.2
Average age (Male)	23.5	23.5	25.2
Average age (Female)	24.9	25.2	27.3

Households & Income	0.25 Miles	0.5 Miles	1 Mile
Total households	4,167	16,625	62,311
# of persons per HH	3.4	3.3	2.9
Average HH income	\$41,423	\$42,290	\$47,272
Average house value	\$791,840	\$731,041	\$710,450

\* Demographic data derived from 2020 ACS - US Census



**Yossi Zicherman**

646.461.4000

yossi@workplacerealty.com