

150 EAST 42ND STREET

THE MOBIL BUILDING | BETWEEN 3RD AVENUE & LEXINGTON AVENUE
GRAND CENTRAL RETAIL CORRIDOR

GRAND CENTRAL TERMINAL



GRAND HYATT

NEW GRAND CENTRAL TERMINAL
AND MTA 42ND STREET
ENTRANCE NOW OPEN

SPACE A

SPACE B

42ND STREET AND LEXINGTON AVENUE

CONTACT EXCLUSIVE BROKERS FOR DETAILS:

KENNETH SCHUCKMAN

Real Estate Broker

ken@schuckmanrealty.com

TRENT E. DICKEY

Associate Real Estate Broker

trent@schuckmanrealty.com

12 E. 49TH STREET, SUITE 10-107 / NEW YORK, NY 10017
120 NORTH VILLAGE AVENUE / ROCKVILLE CENTRE, NY 11570

WWW.SCHUCKMANREALTY.COM

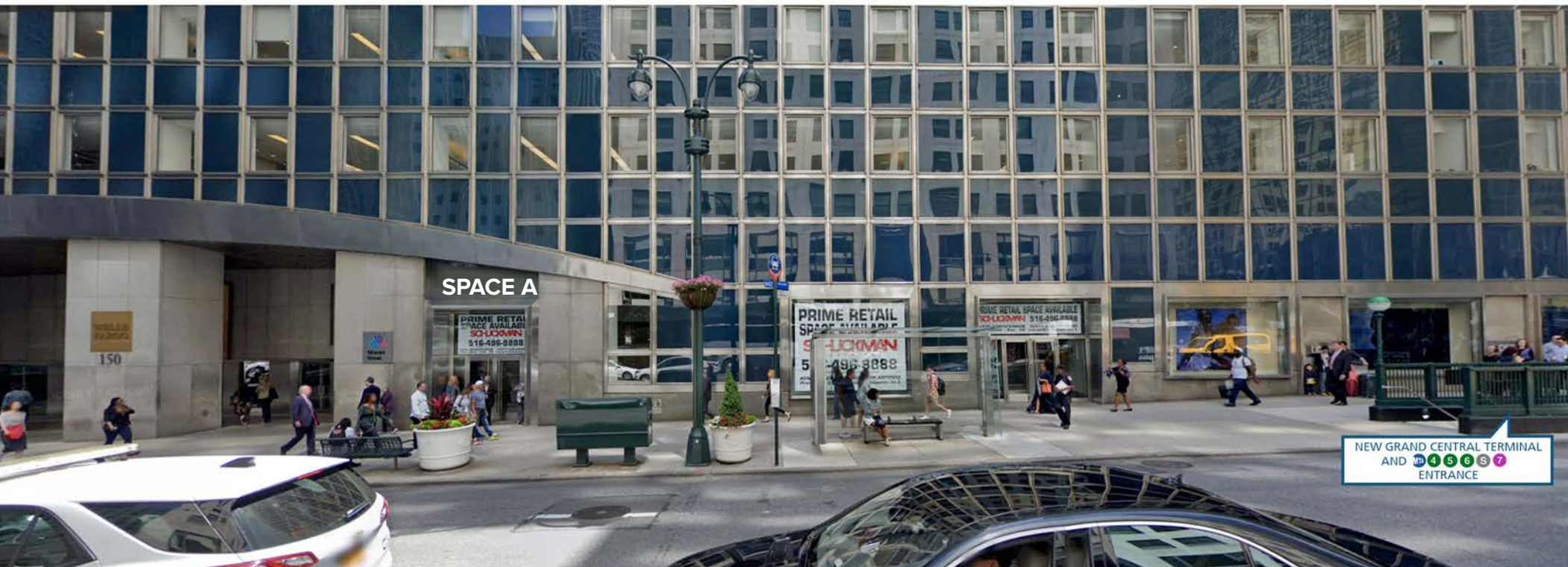
P. 516.496.8888

This information contained herein has been obtained from sources believed reliable. However, we have not verified it and make no guarantee, warranty or representation about it. It is submitted subject to the possibility of errors, omissions, change of price, rental and other conditions, prior sale, lease or financing, or withdrawal without notice. It is your responsibility to independently confirm its accuracy and completeness. Any projections, opinions, assumptions, or estimates used are for example only and they may not represent the current or future suitability, availability or performance of the property. You and your tax and legal advisors should conduct your own investigation of any property and transaction. We may or may not have an exclusive or nonexclusive contractual relationship with a tenant or the owner/landlord of a particular property; and if we do, such relationship shall be fully disclosed to you on a timely basis. Third-party trademarks, service marks, graphics, and logos belong to third parties. You are not granted any right or license with respect to Schuckman Realty Inc.'s trademarks service marks, graphics, and logos or the trademarks service marks, graphics, and logos of any third party. Kenneth Schuckman is Broker of record of Schuckman Realty Inc.

SCHUCKMAN
REALTY INC.

THE MOBIL BUILDING

150 EAST 42ND STREET | BETWEEN 3RD AVENUE & LEXINGTON AVENUE
GRAND CENTRAL RETAIL CORRIDOR



NEW GRAND CENTRAL TERMINAL
AND 4 5 6 S 7
ENTRANCE

SIZE: Space A: 1,775 SF

Space B: 2,400 SF (LEASE OUT)

AVAILABILITY: Immediate

ASKING RENT: Upon Request

COMMENTS:

- Located in close proximity to Grand Central Terminal with over 46M riders Annually on 4 5 6 S and 7 Subway lines and Metro North Railroad
- 88' of Frontage on 42nd Street
- Potential to combine for approximately 4,175 SF
- New subway entrances now open steps from storefront
- Exceptionally strong soft goods and restaurant sales

JOIN:



EXTRADE CHOP'T CHASE vineyard vines

DEMOGRAPHICS	.25 mile	.5 mile	.75 mile
Population	8,770	48,121	90,465
Households	5,407	29,799	55,073
Daytime Employees	117,055	321,381	649,811
Average Household Income	\$157,860	\$153,635	\$152,860

CONTACT EXCLUSIVE BROKERS FOR DETAILS:

KENNETH SCHUCKMAN
Real Estate Broker
ken@schuckmanrealty.com

TRENT E. DICKEY
Associate Real Estate Broker
trent@schuckmanrealty.com

SCHUCKMAN
REALTY INC.

12 E. 49TH STREET, SUITE 10-107 / NEW YORK, NY 10017
120 NORTH VILLAGE AVENUE / ROCKVILLE CENTRE, NY 11570

WWW.SCHUCKMANREALTY.COM
P. 516.496.8888

This information contained herein has been obtained from sources believed reliable. However, we have not verified it and make no guarantee, warranty or representation about it. It is submitted subject to the possibility of errors, omissions, change of price, rental and other conditions, prior sale, lease or financing, or withdrawal without notice. It is your responsibility to independently confirm its accuracy and completeness. Any projections, opinions, assumptions, or estimates used are for example only and they may not represent the current or future suitability, availability or performance of the property. You and your tax and legal advisors should conduct your own investigation of any property and transaction. We may or may not have an exclusive or nonexclusive contractual relationship with a tenant or the owner/landlord of a particular property; and if we do, such relationship shall be fully disclosed to you on a timely basis. Third-party trademarks, service marks, graphics, and logos belong to third parties. You are not granted any right or license with respect to Schuckman Realty Inc.'s trademarks service marks, graphics, and logos or the trademarks service marks, graphics, and logos of any third party. Kenneth Schuckman is Broker of record of Schuckman Realty Inc.

THE MOBIL BUILDING

150 EAST 42ND STREET | BETWEEN 3RD AVENUE & LEXINGTON AVENUE
GRAND CENTRAL RETAIL CORRIDOR

EAST 41ST STREET



EAST 42ND STREET

GRAND CENTRAL TERMINAL
AND      
ENTRANCE NOW OPEN

1,775 SF 2,400 SF

NEW GRAND CENTRAL TERMINAL
AND      
ENTRANCE NOW OPEN

CONTACT EXCLUSIVE BROKERS FOR DETAILS:

KENNETH SCHUCKMAN

Real Estate Broker
ken@schuckmanrealty.com

TRENT E. DICKEY

Associate Real Estate Broker
trent@schuckmanrealty.com

12 E. 49TH STREET, SUITE 10-107 / NEW YORK, NY 10017
120 NORTH VILLAGE AVENUE / ROCKVILLE CENTRE, NY 11570

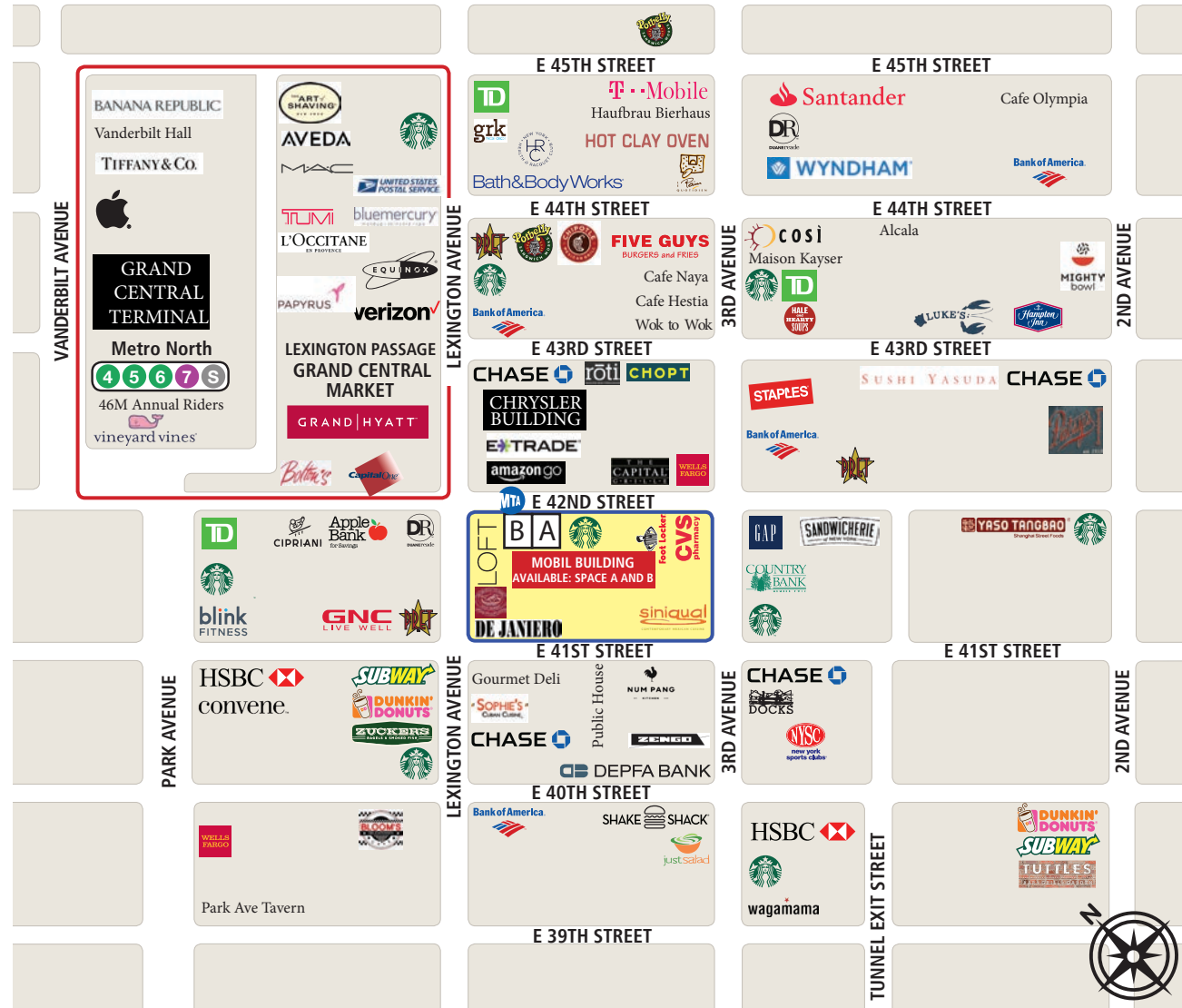
WWW.SCHUCKMANREALTY.COM

P. 516.496.8888

This information contained herein has been obtained from sources believed reliable. However, we have not verified it and make no guarantee, warranty or representation about it. It is submitted subject to the possibility of errors, omissions, change of price, rental and other conditions, prior sale, lease or financing, or withdrawal without notice. It is your responsibility to independently confirm its accuracy and completeness. Any projections, opinions, assumptions, or estimates used are for example only and they may not represent the current or future suitability, availability or performance of the property. You and your tax and legal advisors should conduct your own investigation of any property and transaction. We may or may not have an exclusive or nonexclusive contractual relationship with a tenant or the owner/landlord of a particular property; and if we do, such relationship shall be fully disclosed to you on a timely basis. Third-party trademarks, service marks, graphics, and logos belong to third parties. You are not granted any right or license with respect to Schuckman Realty Inc.'s trademarks service marks, graphics, and logos or the trademarks service marks, graphics, and logos of any third party. Kenneth Schuckman is Broker of record of Schuckman Realty Inc.

SCHUCKMAN
REALTY INC.

150 EAST 42ND STREET | BETWEEN 3RD AVENUE & LEXINGTON AVENUE
GRAND CENTRAL RETAIL CORRIDOR



This information contained herein has been obtained from sources believed reliable. However, we have not verified it and make no guarantee, warranty or representation about it. It is submitted subject to the possibility of errors, omissions, change of price, rental and other conditions, prior sale, lease or financing, or withdrawal without notice. It is your responsibility to independently confirm its accuracy and completeness. Any projections, opinions, assumptions, or estimates used are for example only and they may not represent the current or future suitability, availability or performance of the property. You and your tax and legal advisors should conduct your own investigation of any property and transaction. We may or may not have an exclusive or nonexclusive contractual relationship with a tenant or the owner/landlord of a particular property; and if we do, such relationship shall be fully disclosed to you on a timely basis. Third-party trademarks, service marks, graphics, and logos belong to third parties. You are not granted any right or license with respect to Schuckman Realty Inc.'s trademarks service marks, graphics, and logos or the trademarks service marks, graphics, and logos of any third party. Kenneth Schuckman is Broker of record of Schuckman Realty Inc.

SCHUCKMAN®
REALTY INC.