



**1N**

**One North Franklin**

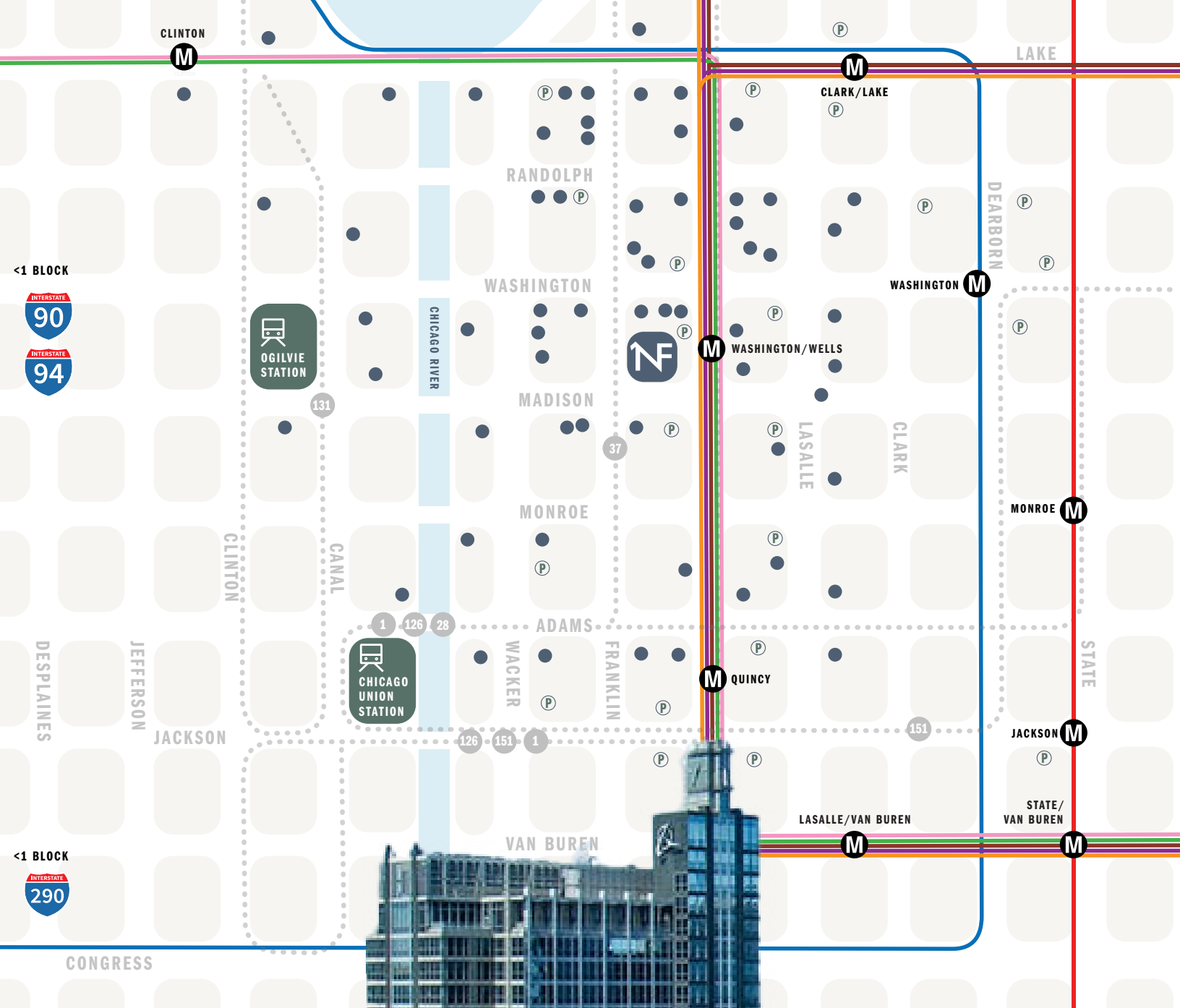
A modern office lobby with a high ceiling, large arched windows, and contemporary furniture. The space features a central circular reception desk, a large red circular ottoman, and several grey and blue armchairs. The architecture includes wooden columns and a light-colored marble floor. The text is overlaid on the left side of the image.

# Let's be *frank.*

**The New One North Franklin  
is a workplace that works.**






Ideally located, this office building is undergoing a transformation that will redefine office space. With a redesigned lobby and a newly introduced amenity floor, One North Franklin will exude a fresh contemporary feel, offering unparalleled views, abundant natural light, and a vibrant atmosphere.

**Frankly, it's fresh.**



## Location

Positioned at the corner of Madison Street and Franklin Street, One North Franklin offers convenient access to Ogilvie Transportation Center and Union Station, as well as proximity to the Washington & Wells CTA "El" stop and numerous CTA bus lines. Just steps from your office you can enjoy numerous restaurants, cafés and shopping.

-  Bus routes
-  CTA stations
-  Metra stations
-  Restaurants, coffee shops, bars
-  Parking



*clearly*  
the views rock.



## Amenities

One North Franklin provides an elevated tenant experience with high-quality amenities and customer service and amazing cityscape views.

- Penthouse tenant lounge
- Fitness and Wellness Center
- Conference Center
- Executive Parking
- Bike Room
- PNC Bank Branch

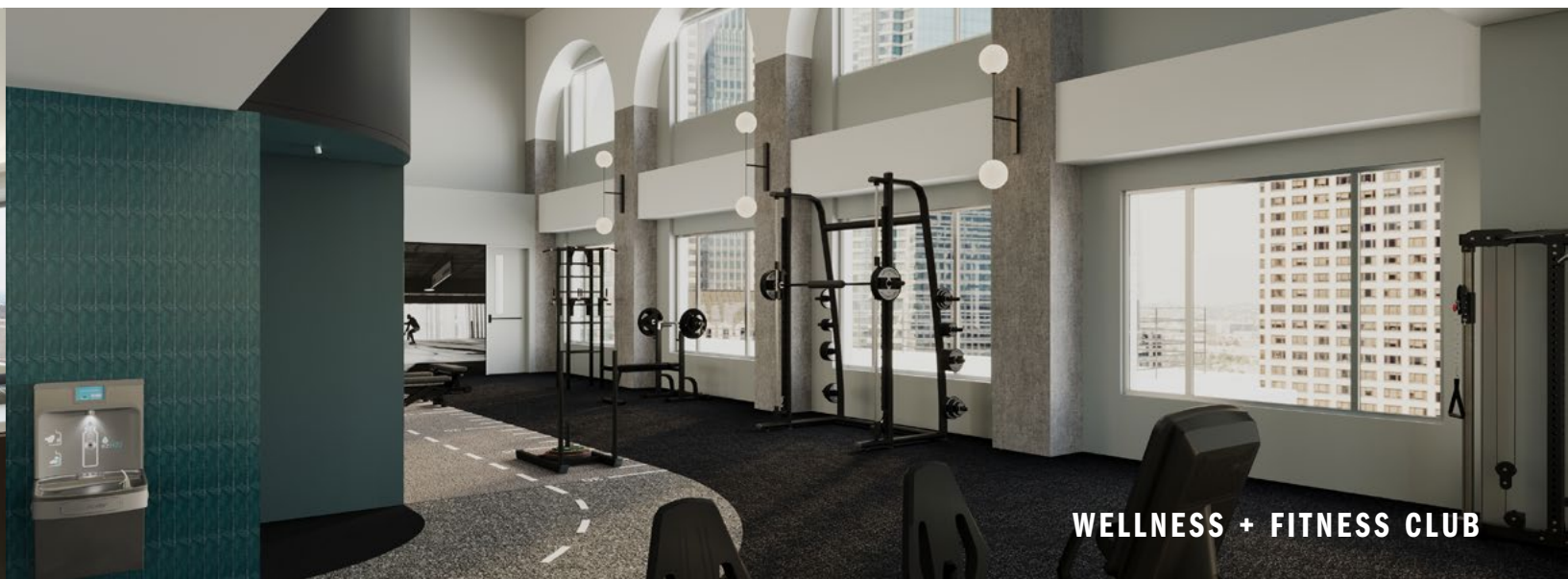
*candidly* the transformation is remarkable.



MUSIC ROOM AT THE TENANT LOUNGE



TENANT LOUNGE



WELLNESS + FITNESS CLUB

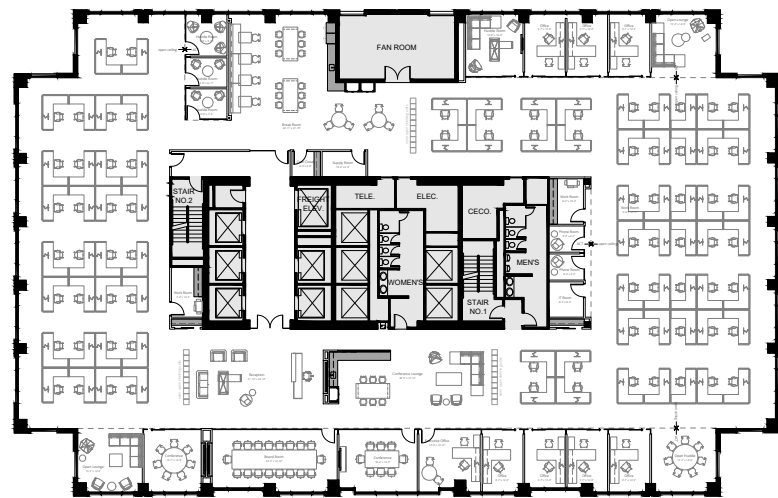


# surely

it's all that.  
and then some.

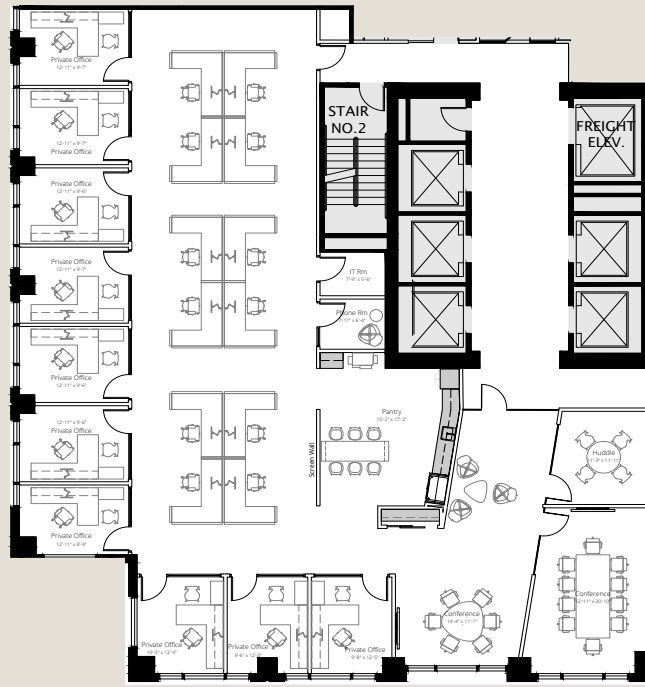
↓ Click here to  
download plan

📷 Virtual Tour



**FULL FLOOR OPPORTUNITIES**

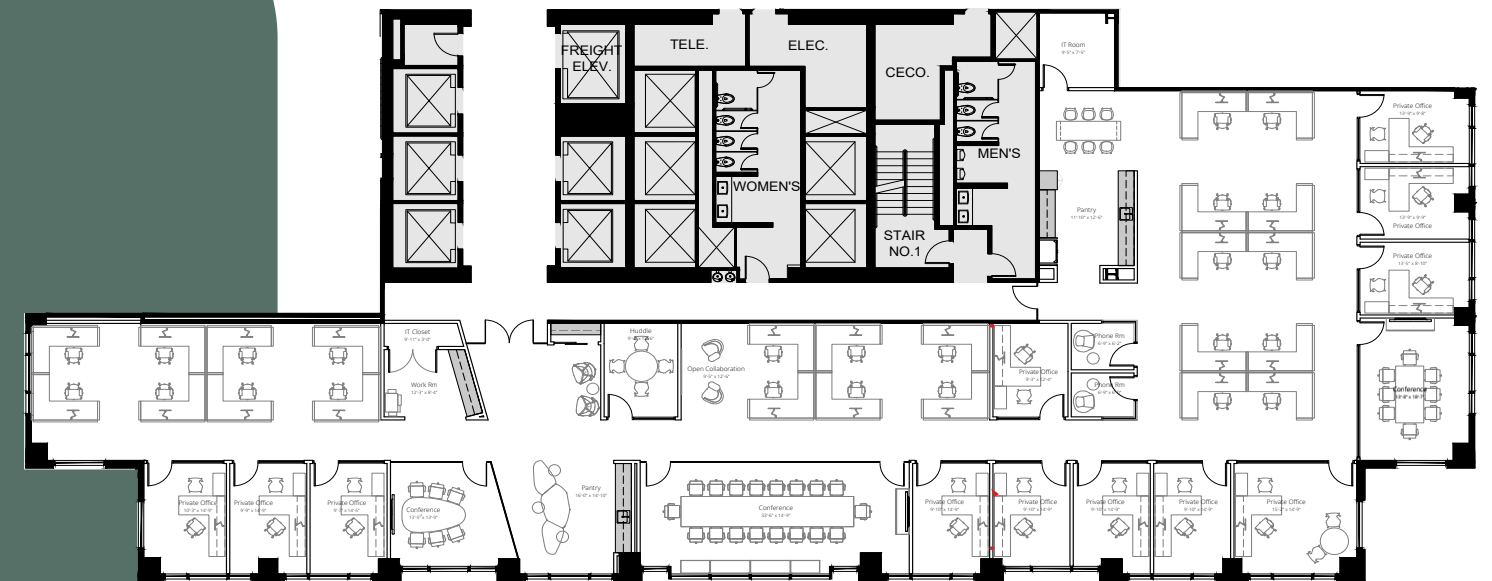




**Suite 1850**  
**5,327 RSF**

- 10 private offices
- 12 workstations
- 2 conference rooms
- 1 huddle room
- 1 phone room
- Pantry

[Click here to download plan](#)  
[Virtual Tour](#)



**Suite 1500**  
**8,936 RSF**

- 12 private offices
- 24 workstations
- 3 conference rooms
- 1 huddle room
- 2 phone rooms
- Reception/Pantry
- Kitchen

[Click here to download plan](#)  
[Virtual Tour](#)



*frankly*  
you need to tour.



**Brad Despot**  
+1 312 228 2033  
brad.despot@jll.com

**Kim Doyle**  
+1 312 228 3157  
kim.doyle@jll.com

Although information has been obtained from sources deemed reliable, JLL does not make any guarantees, warranties or representations, express or implied, as to the completeness or accuracy as to the information contained herein. Any projections, opinions, assumptions or estimates used are for example only. There may be differences between projected and actual results, and those differences may be material. JLL does not accept any liability for any loss or damage suffered by any party resulting from reliance on this information. If the recipient of this information has signed a confidentiality agreement with JLL regarding this matter, this information is subject to the terms of that agreement. ©2024 Jones Lang LaSalle Brokerage, Inc. All rights reserved.