

FOR LEASE

MULTI-TENANT INDUSTRIAL SPACE

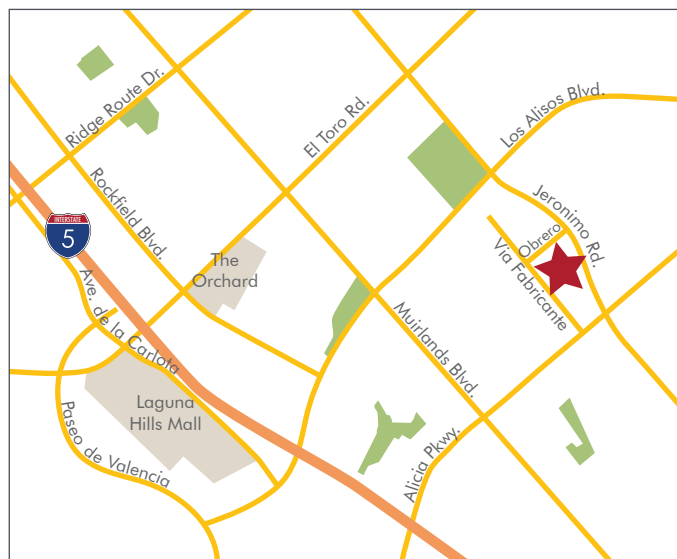
MISSION VIEJO
BUSINESS
CENTER



NEW REDUCED LEASE RATES! STARTING FROM \$0.80 PSF FOR 3 MONTHS WITH MINIMUM 37-MONTH LEASE

FEATURES

- High-image business park
- Office & warehouse suites available
- Surface free parking, 2:1,000
- 100 amp power
- 14' clearance
- Prominent signage
- Ground level loading
- Major street frontage



For more information, contact:

GUY LAFERRARA

Senior Vice President

CaIDRE 01012355

949.790.3115

glaferrara@leeirvine.com

BROCK STRYKER

Vice President

CaIDRE 01928271

949.790.3131

bstryker@leeirvine.com

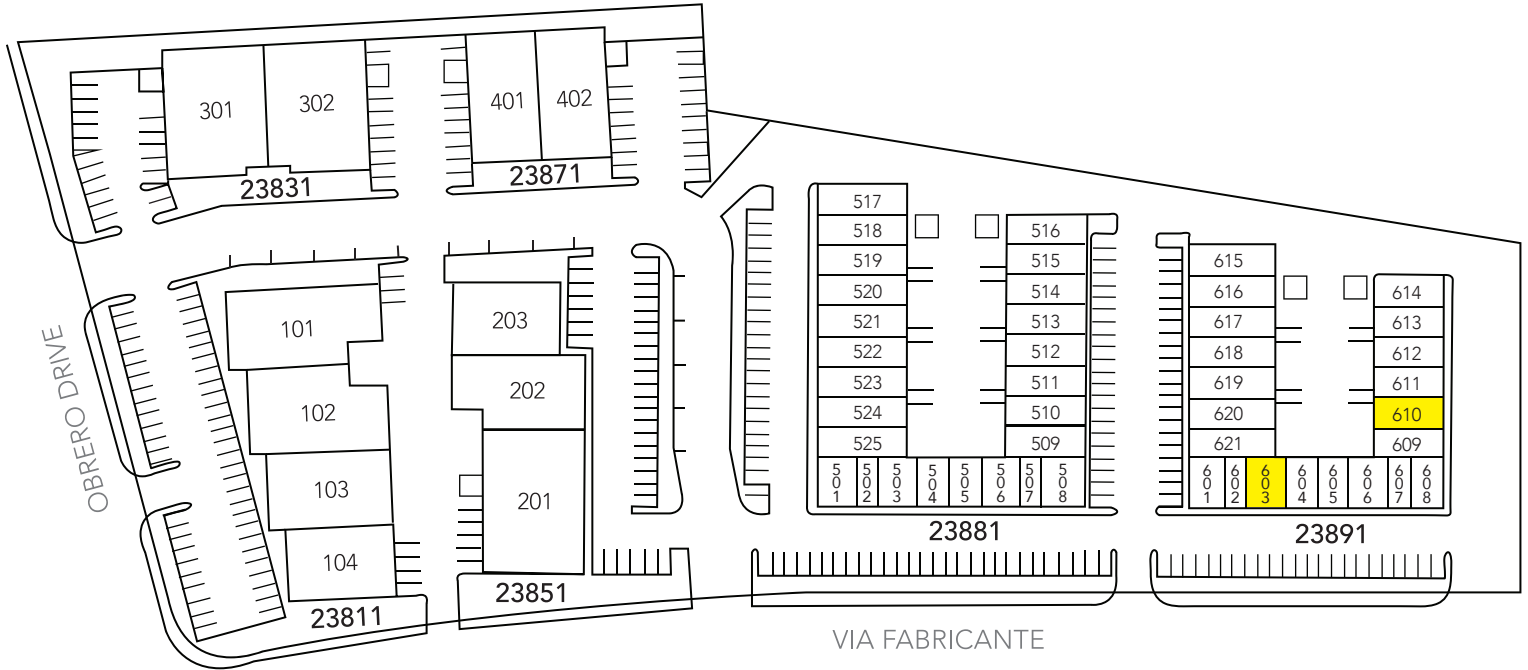


All information furnished regarding property for sale, rental or financing is from sources deemed reliable, but no warranty or representation is made to the accuracy thereof and same is submitted to errors, omissions, change of price, rental or other conditions prior to sale, lease or financing or withdrawal without notice. No liability of any kind is to be imposed on the broker herein.

FOR LEASE

MULTI-TENANT INDUSTRIAL SPACE

MISSION VIEJO
BUSINESS
CENTER



PROJECT AVAILABILITY

ADDRESS	SUITE	SIZE	RATE	OFFICE SIZE	COMMENTS
23891 Via Fabricante	603	919 SF	\$1.85 MG	100% Office/Retail	Available 11/15/2021
23891 Via Fabricante	610	1,013 SF	\$1.60 MG	300 SF	Available Now

CAM Expenses Estimated at \$0.26 PSF

GUY LAFERRARA

Senior Vice President

CalDRE 01012355

949.790.3115

glaferrara@leeirvine.com

BROCK STRYKER

Vice President

CalDRE 01928271

949.790.3131

bstryker@leeirvine.com

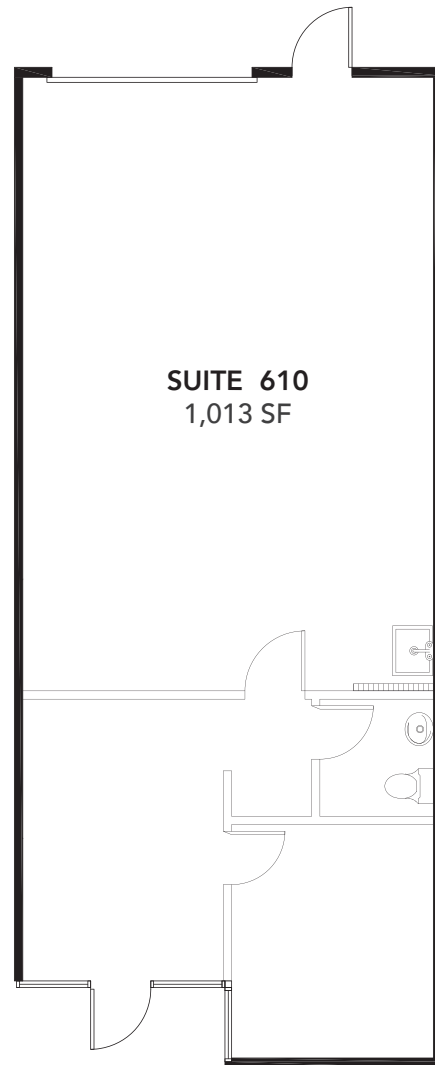
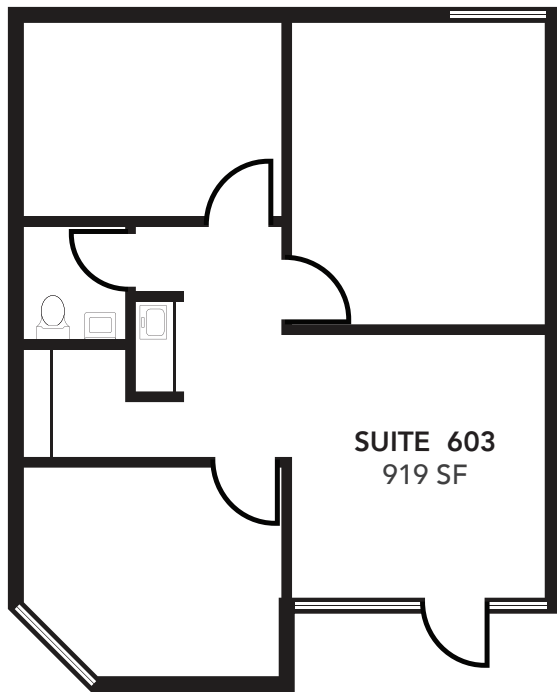


FOR LEASE

MULTI-TENANT INDUSTRIAL SPACE

MISSION VIEJO
BUSINESS
CENTER

23891 VIA FABRICANTE



BUILDING 23891



BUILDING 23881



BUILDING 23891

