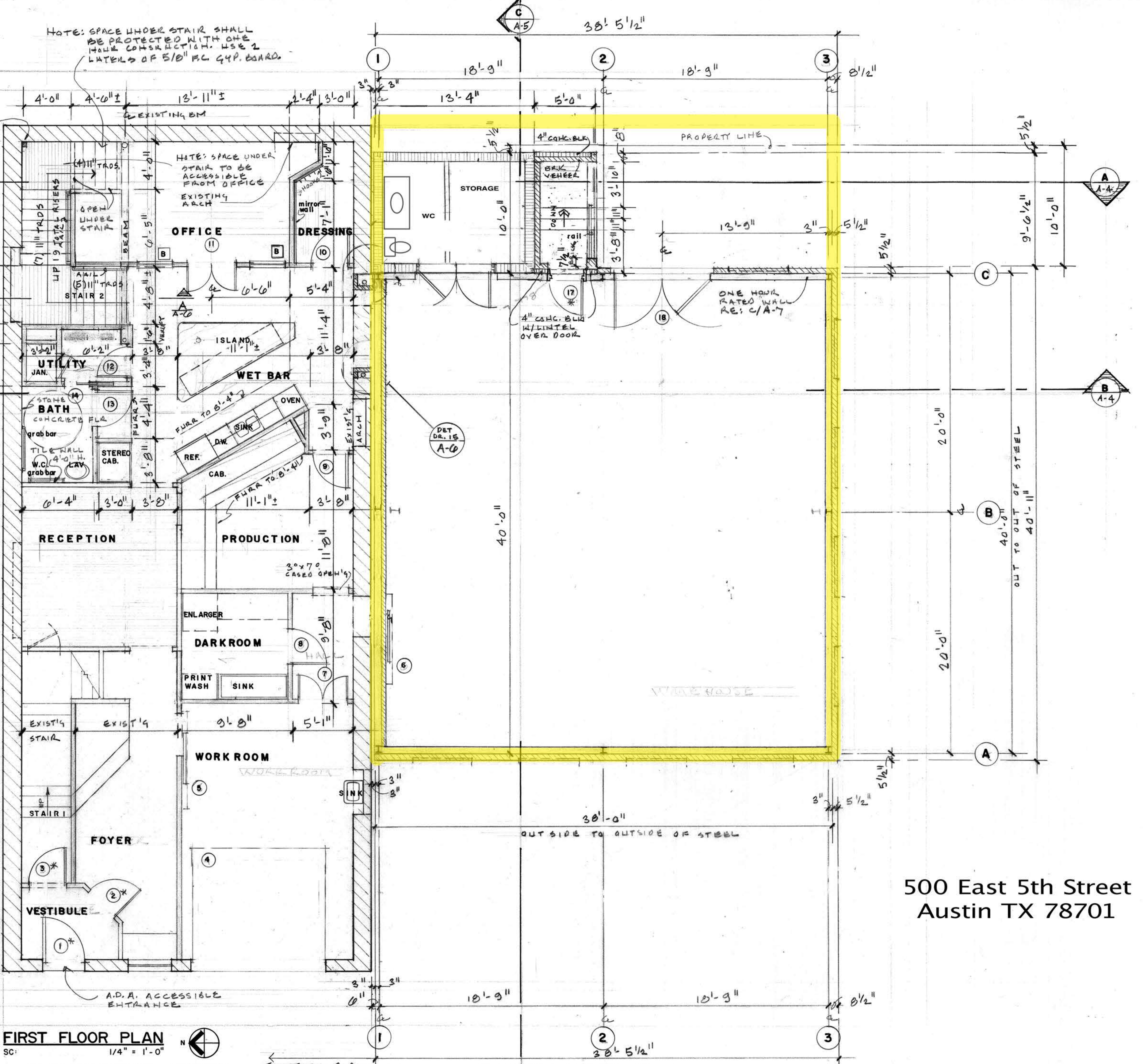


NOTE: SPACE UNDER STAIR SHALL BE PROTECTED WITH ONE HOUR CONSTRUCTION. USE 2 LAYERS OF 5/8" PL GYP. BOARD.



500 East 5th Street
Austin TX 78701

FIRST FLOOR PLAN
SC: 1/4" = 1'-0"
PLAN NORTH

HARDWARE NOTE:
* PANIC PROOF EXIT HARDWARE. SIMULTANEOUS RETRACTION OF BOTH BOLT & LATCH FROM THE INSIDE BY TURNING THE LEVER. (SCHLAGE INTER CONNECTED H SERIES LOCK OR EQUAL)

EXISTING BLDG
NEW BUILDING