

# ANCONA OFFICE CENTRE



21410 NORTH 19TH AVENUE PHOENIX, ARIZONA 85027

Exclusively represented by:

**ASHLEY A. BROOKS, JR., SIOR**

Senior Vice President

602.735.1758

ashley.brooks@cbre.com

**JASMINA SUBASIC**

Client Service Specialist

602.735.5262

jasmina.subasic@cbre.com

**CBRE**

**PROPERTY FEATURES:**

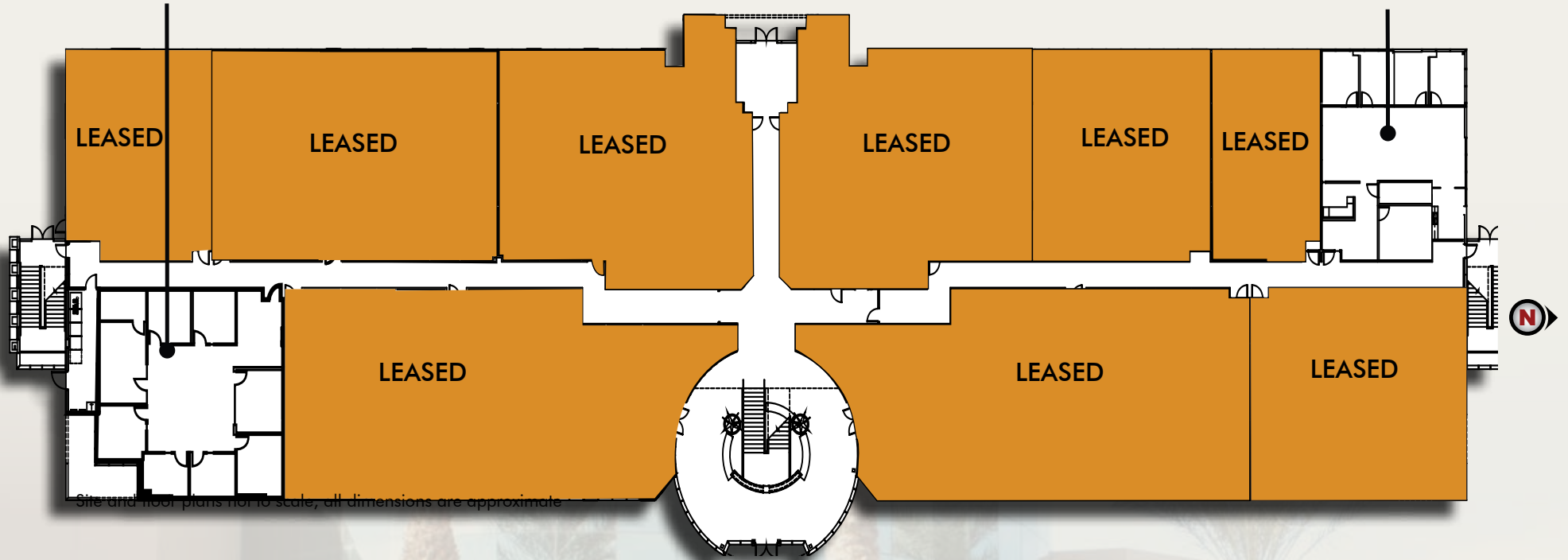
- » ±81,000 square foot, office building
- » Frontage on 19th Avenue
- » Excellent visibility
- » Corporate neighbors include USAA, Cigna, Honeywell, and Cox Communications
- » Easy access to freeways, northwest labor markets, amenities, and residential areas
- » 5/1,000 parking including covered reserved
- » Fiber available
- » Minutes to Happy Valley Towne Center and Deer Valley Towne Centre
- » One passenger elevator and a “monument” stair case in the lobby
- » Two-story atrium lobby
- » “Through lobby” for excellent visitor and employee access
- » Monument signage to 19th Avenue
- » 2005 NAIOP Small Office Building of the Year

# FIRST FLOOR

**ANCONA**  
OFFICE CENTRE

SUITE 139: ±2,462 SF

SUITE 114: ±2,202 SF



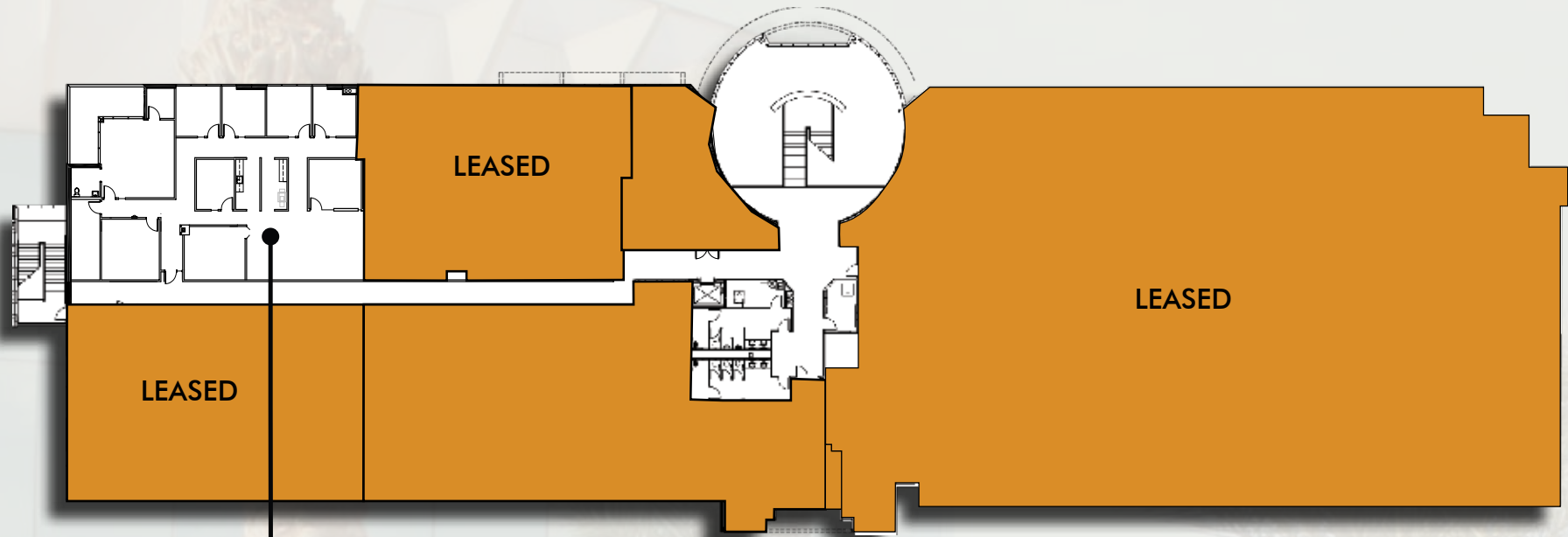




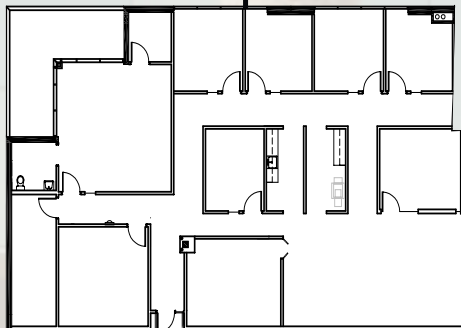
# ANCONA OFFICE CENTRE

21410 NORTH 19TH AVENUE PHOENIX, ARIZONA 85027

## SECOND FLOOR



SUITE 206  
±3,916 SF  
AVAILABLE  
3/1/2019





21410 NORTH 19TH AVENUE

Phoenix, Arizona



Site plan not to scale

19TH AVENUE

NORTH

Exclusively represented by:

**ASHLEY A. BROOKS, JR., SIOR**  
 Senior Vice President  
 602.735.1758  
 ashley.brooks@cbre.com

**CBRE**

**JASMINA SUBASIC**  
 Client Services Specialist  
 602.735.5262  
 jasmina.subasic@cbre.com

2575 East Camelback Road • Phoenix, Arizona 85016-4290 • T 602.735.5555 • F 602.735.5655 • www.cbre.com/phoenix

© 2017 CBRE, Inc. All rights reserved. This information has been obtained from sources believed reliable, but has not been verified for accuracy or completeness. You should conduct a careful, independent investigation of the property and verify all information. Any reliance on this information is solely at your own risk. CBRE and the CBRE logo are service marks of CBRE, Inc. and/or its affiliated or related companies in the United States and other countries. All other marks displayed on this document are the property of their respective owners. Photos herein are the property of their respective owners and use of these images without the express written consent of the owner is prohibited. ABS187\_01/16