

OFFICE SPACE FOR LEASE

12630 Brookhurst Street, Garden Grove



Property Features:

UNIT C - Approximately 1,000 SF

- ❖ Upgraded Flooring
- ❖ Private Offices

UNIT D – Approximately 1,380 SF

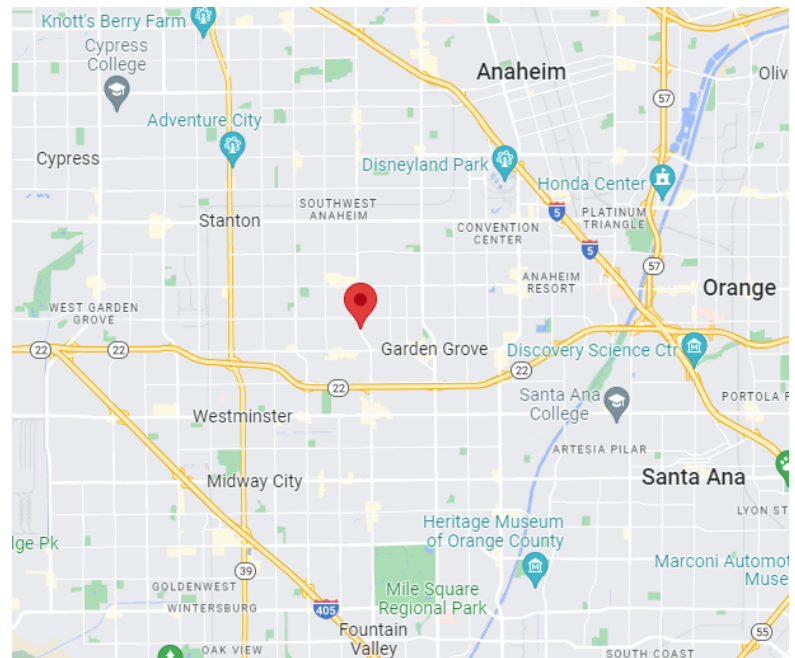
- ❖ Four Large Offices
- ❖ Two Small Private Offices
- ❖ Kitchenette

UNIT E – Approximately 985 SF

- ❖ One Large Office
- ❖ One Small Office/ Breakroom
- ❖ Two Bullpen Style Areas with Four Cubicles in Each Bullpen

Units C, D & E can be contiguous to total 3,365 SF

LEASE RATE: 1.50/SF Gross



Your Entrepreneurial Real Estate Partner.
Building Wealth Together.

ANTHONY GONZALEZ

T: (562) 498-3395
D: (562) 296-1311
agonzalez@incocommercial.com
DRE Lic. 02052380

STEVE JONES

T: (714) 636-9800
F: (714) 636-9900
steve@olympiacorp.net
DRE Lic. 01841959



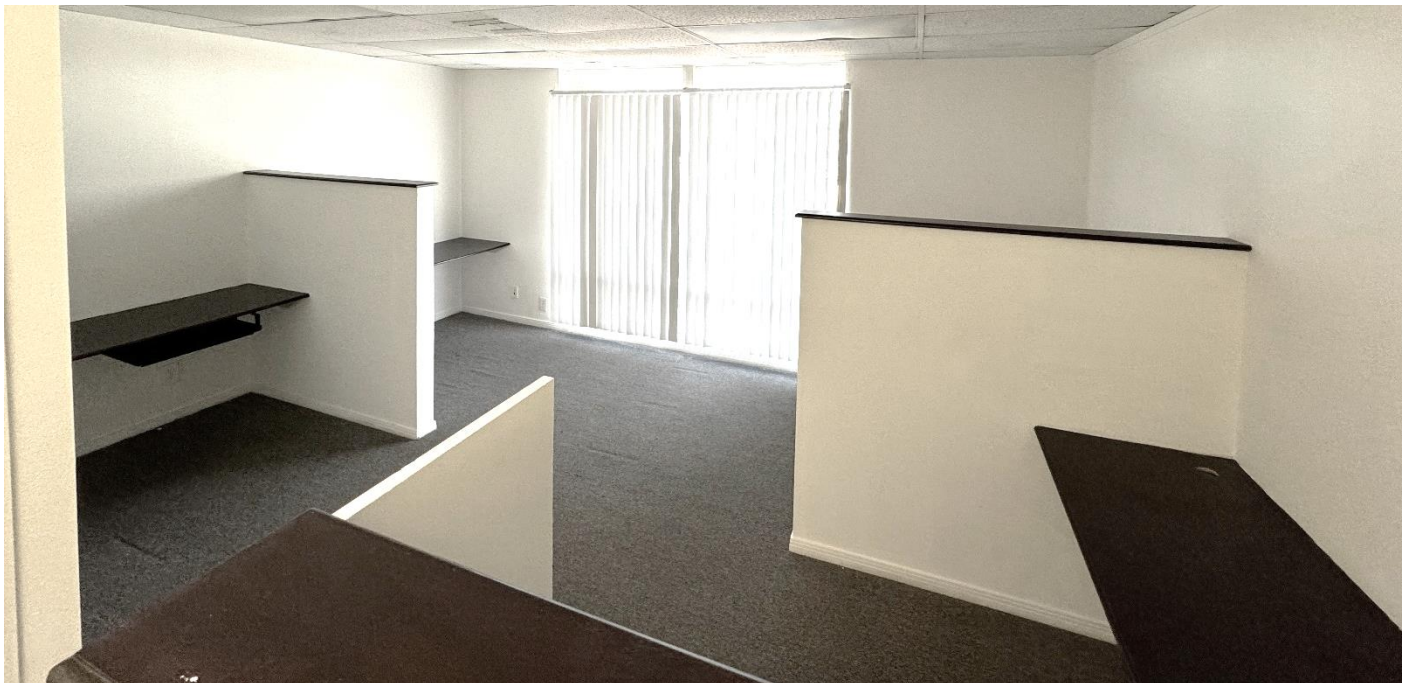
OFFICE SPACE FOR LEASE

12630 Brookhurst Street, Garden Grove

UNIT D – Approximately 1,380 SF



UNIT E – Approximate 985 SF



Your Entrepreneurial Real Estate Partner.
Building Wealth Together.

ANTHONY GONZALEZ

T: (562) 498-3395
D: (562) 296-1311
agonzalez@incocommercial.com
DRE Lic. 02052380

STEVE JONES

T: (714) 636-9800
F: (714) 636-9900
steve@olympiacorp.net
DRE Lic. 01841959

6621 E. Pacific Coast Hwy., Suite 280, Long Beach, CA 90803 | 562.498.3395 | **BRE#01359006**

This information contained herein was obtained from third parties and has not been independently verified by real estate brokers. Buyers and tenants should have experts of their choice inspect the property and verify all information. Real Estate Brokers are not qualified to act as or select experts with respect to legal, tax, environmental, building construction, soil drainage or other such matters.