

158 11TH STREET

FOR LEASE | STAND ALONE CREATIVE OFFICE BUILDING

TCP
TOUCHSTONE
COMMERCIAL PARTNERS



WWW.TCPRE.COM

ZACH HAUPERT zhaupert@tcpre.com
D 415.539.1121 | C 415.812.1219

MICHAEL SANBERG msanberg@tcpre.com
D 415.539.1103 | C 415.697.6088

158 11TH STREET

PROPERTY SUMMARY

ADDRESS

158 11th Street, San Francisco, CA 94103

AVAILABLE SPACE

+/- 7,500 Square Feet

RENTAL RATE

\$38 / Year, Industrial Gross

AVAILABLE

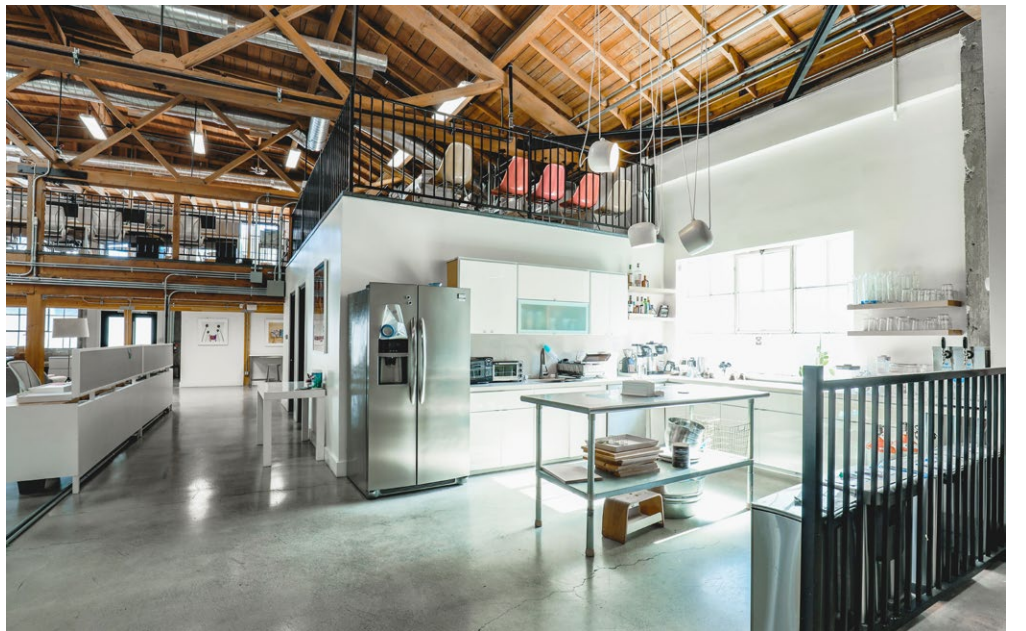
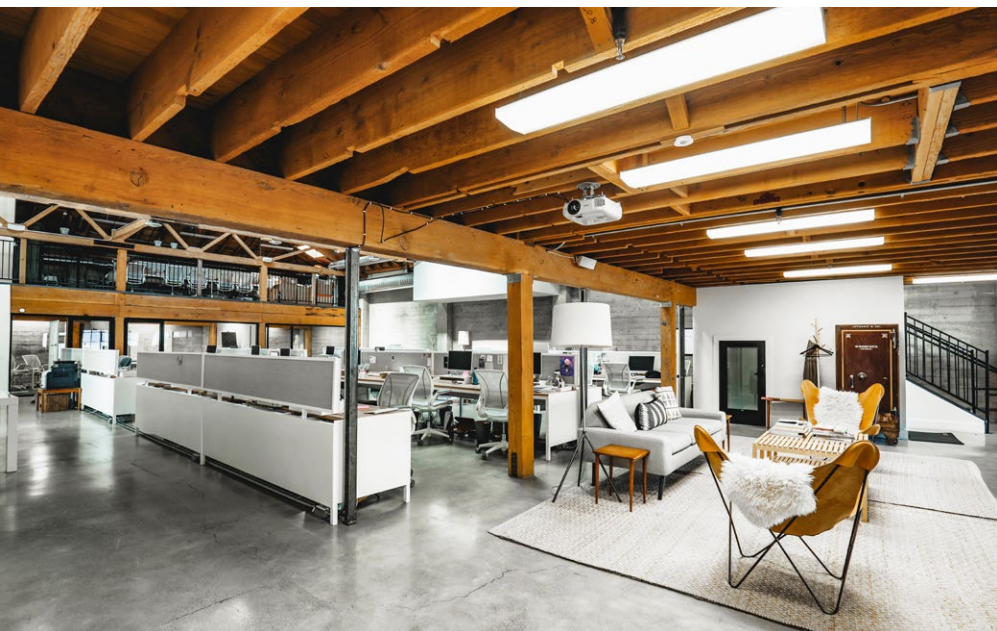
Immediately

BUILDING ATTRIBUTES

- + Hardwood & Epoxy Concrete Floors Throughout
- + Exposed Bow Truss Timber Vaulted Ceiling
- + One (1) Large Conference Room
- + Two (2) Medium Conference/Meeting Rooms
- + One (1) Small Office
- + Mothers Lounge
- + One (1) Drive-In Roll-Up Door
- + Full Kitchenette
- + Men's and Women's ADA Restrooms w/ Shower
- + Furniture Available If Desired



158 11TH STREET



158 11TH STREET

LOCATION OVERVIEW

Desirable South of Market location, walkable to nearby amenities, public transportation and to surrounding neighborhoods.



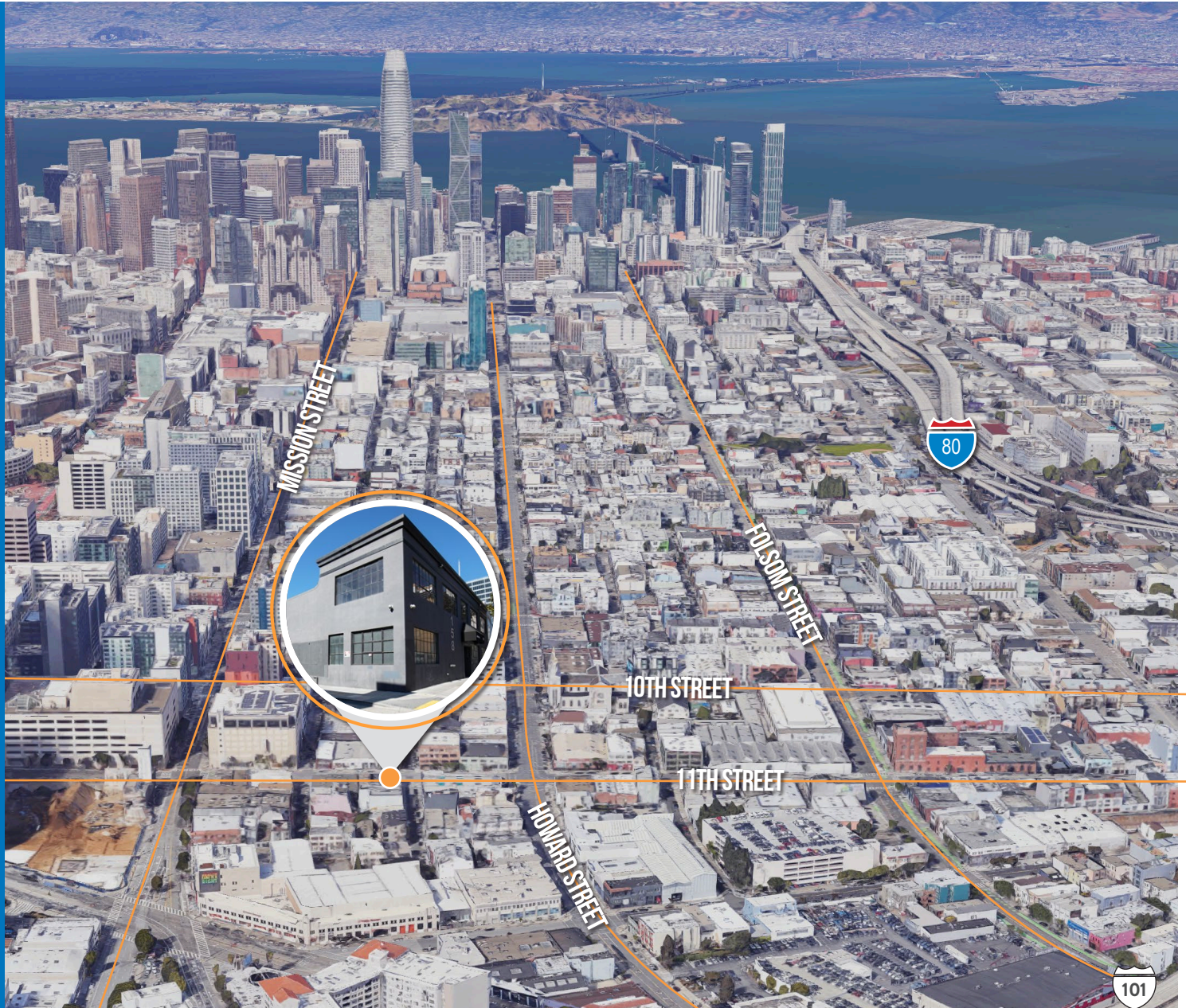
06 MIN to Market St.
11 MIN to Civic Center Bart



05 MIN to Hayes Valley
10 MIN to Union Square
15 MIN to Financial District



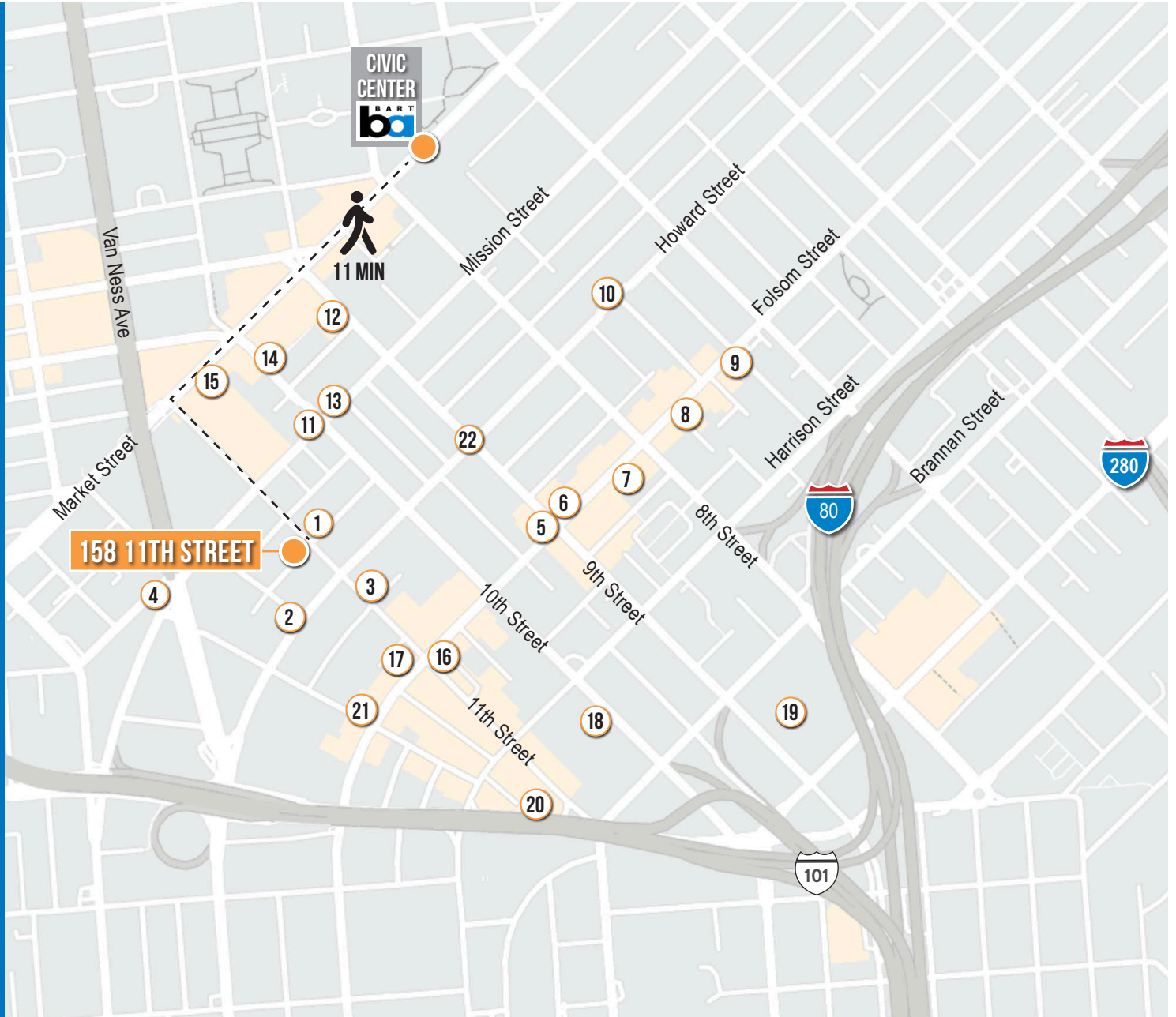
03 MIN to 101 On-Ramp
05 MIN to 80 On-Ramp



158 11TH STREET

NEARBY AMENITIES

- 1..... Joint Venture Kitchen
- 2..... Sushi Ondo
- 3..... Don Ramon's
- 4..... Taqueria Cazadores
- 5..... Kama Sushi Soma
- 6..... Azúcar Lounge
- 7..... Driftwood
- 8..... Basil Thai Restaurant & Bar
- 9..... Trademark & Copyright
- 10..... Cellarmaker Brewing Co.
- 11..... Peet's Coffee
- 12..... Cadillac Outdoor Bar & Grill
- 13..... Cumaica: Artesanos del Cafe
- 14..... Blue Bottle Coffee
- 15..... Kagawa-Ya Udon
- 16..... Basil Canteen
- 17..... Eat Sushi Restaurant
- 18..... Costco Wholesale
- 19..... Trader Joe's
- 20..... SoMa StrEat Food Park
- 21..... The Willows
- 22..... Chantal Guillon Patisserie



158 11TH STREET



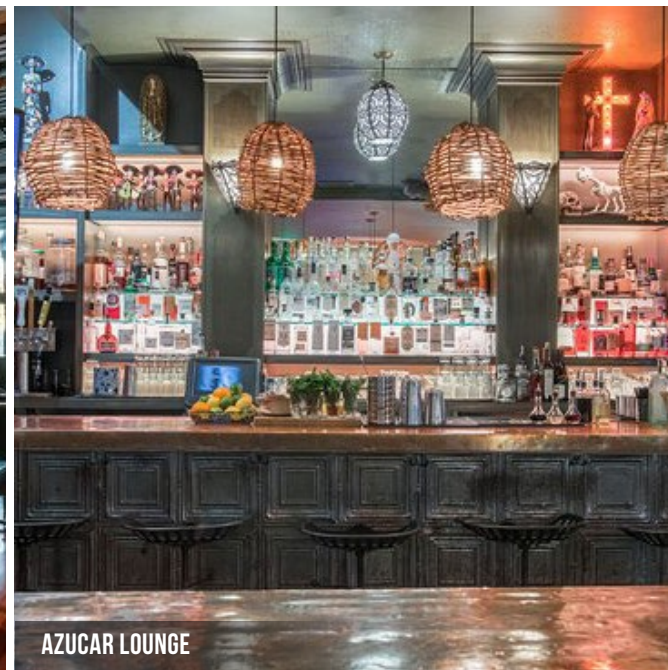
TRADEMARK & COPYRIGHT



THE WILLOWS



BASIL THAI RESTAURANT



AZUCAR LOUNGE



JOINT VENTURE KITCHEN

158 11TH
STREET



Corp. Lic. 01112906
www.tcpre.com

ZACH HAUPERT

D 415.539.1121 C 415.812.1219
zhaupert@tcpre.com DRE # 01822907

MICHAEL SANBERG

D 415.539.1103 C 415.697.6088
msanberg@tcpre.com DRE # 01930041

This document has been prepared by Touchstone Commercial Partners for advertising and general information only. Touchstone Commercial Partners makes no guarantees, representations or warranties of any kind, expressed or implied, regarding the information including, but not limited to, warranties of content, accuracy and reliability. Any interested party should undertake their own inquiries as to the accuracy of the information. Touchstone Commercial Partners excludes unequivocally all inferred or implied terms, conditions and warranties arising out of this document and excludes all liability for loss and damages arising there from. This publication is the copyrighted property of Touchstone Commercial Partners and/or its licensor(s). ©2023. All rights reserved.