

12 Berkeley Street, Mayfair, London, W1J
8DT

mellersh
& harding



Refurbished Grade A office - Commercial property to let in Mayfair

Offices

To Let

1,460 to 3,260 sq ft

(135.64 to 302.86 sq m)

- Beautifully refurbished floor
- Partly fitted out
- Commissionaire

12 Berkeley Street, Mayfair, London, W1J 8DT

Summary

Available Size	1,460 to 3,260 sq ft
Rent	£72.50 - £82.50 per sq ft
Rates Payable	£37.52 per sq ft
EPC Rating	Upon Enquiry

Description

12 Berkeley Street provides modern, Grade A office space in Mayfair behind a restored Portland stone façade. The reception and common parts have recently been refurbished.

The 4th floor has been newly refurbished to comprise high-quality, open plan office space and is available to let immediately.

Location

The property is located on the east side of Berkeley Street, opposite the junction with Stratton Street and close to Berkeley Square, in Mayfair. Green Park underground station (Jubilee, Victoria and Piccadilly lines) is a short walk away.

Accommodation

The accommodation comprises of the following

Name	Sq ft	Sq m	Rent	Availability
4th	1,460	135.64	£72.50 per sq ft	Available
2nd	1,800	167.23	£82.50 per sq ft	Available
Total	3,260	302.86		

Specification

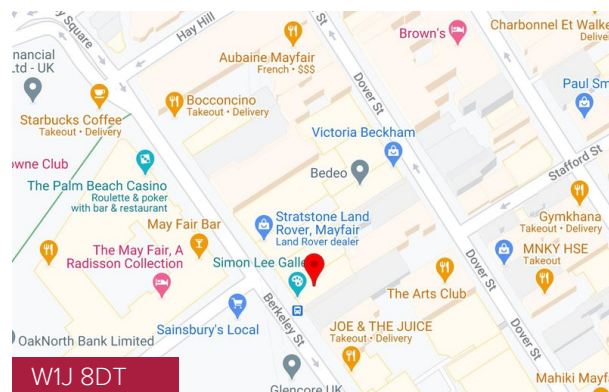
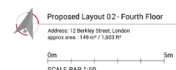
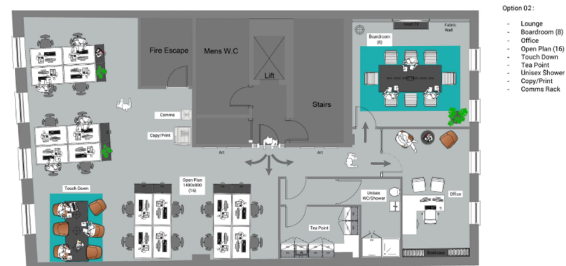
Commissionaire
LG7 compliant lighting
Open-plan format
New suspended ceiling
10 person passenger lift
New accessible raised floors
4-pipe fan-coil air conditioning
WCs on each floor in the common parts and 1 demised WC and shower on the 4th floor
Fitted kitchen

Viewings

Strictly by appointment via the sole letting agents Mellersh and Harding. Please contact Julian Leech or Sammy Conway.

Terms

The floor is available for a term by arrangement, direct from the superior Landlord.



Viewing & Further Information



Sammy Conway

0207 522 8524 | 07741198724

sconway@mellersh.co.uk

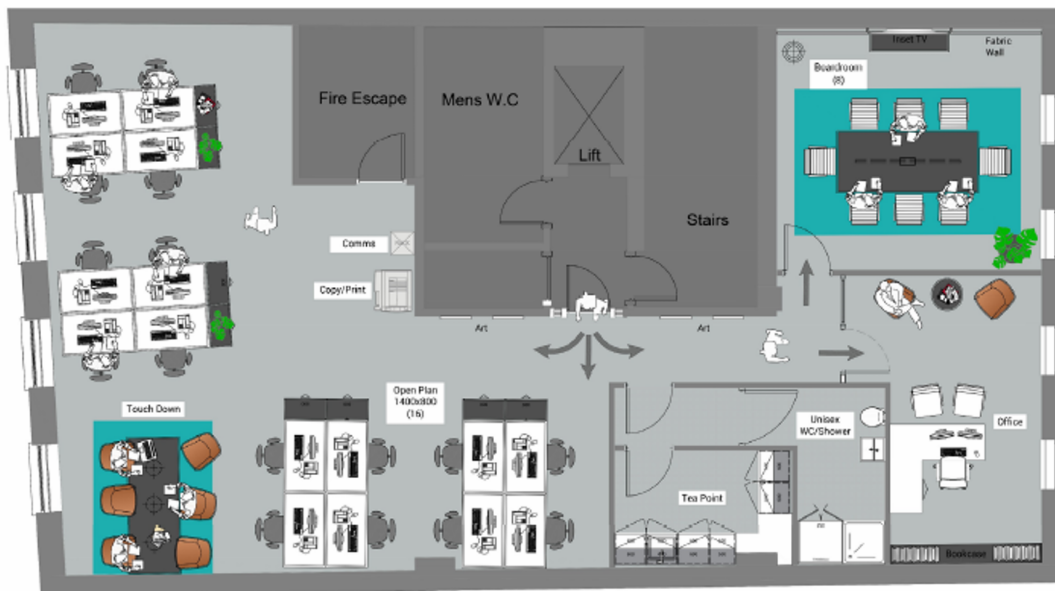


Julian Leech

020 7522 8525 | 07870 644694

jleech@mellersh.co.uk

More properties @ mellersh.co.uk



Option 02:

- Lounge
- Boardroom (8)
- Office
- Open Plan (16)
- Touch Down
- Tea Point
- Unisex Show
- Copy/Print
- Comms Rack



Proposed Layout 02 - Fourth Floor

Address: 12 Berkley Street, London
approx area : 149 m² / 1,603 ft²

0m 5m
SCALE BAR 1:50

