

FOR SALE OR BUILD-TO-SUIT



LOCATION: Shadow Butte Industrial Park
2622 W. Success Way
Emmett, ID 83617

PRICE: \$59,629.28 (\$0.65/SF).

AREA: 2.106 Acres (91,737 SF).

DIMENSIONS: Corner lot approx. 300' X 300'.

ZONING: Industrial.

TAX PARCEL NO: RPC95000030010.

LEGAL: Lot 1, Block 3, Phase 1, Shadow Butte Industrial Park.

IMPROVEMENTS: City sewer, common area water supply, underground power, gas, phone/internet, wide paved streets, sidewalks, landscaping, fire hydrants, and subdivision monument signage.

Incentives: Contact Gem County Development Services.

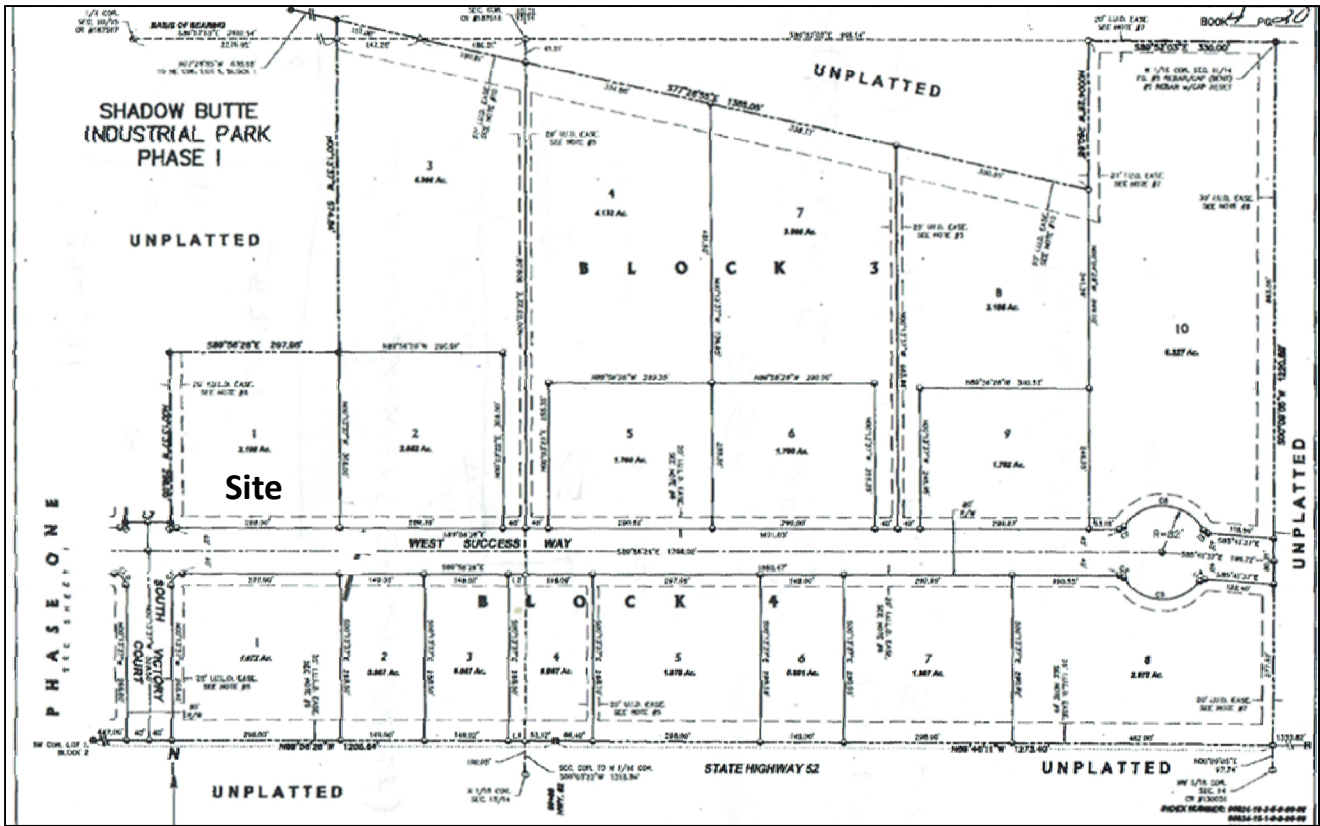


Contact: _____
RFR Properties, LLC, PO Box 2579, Eagle, ID 83616
www.rfrproperties.com

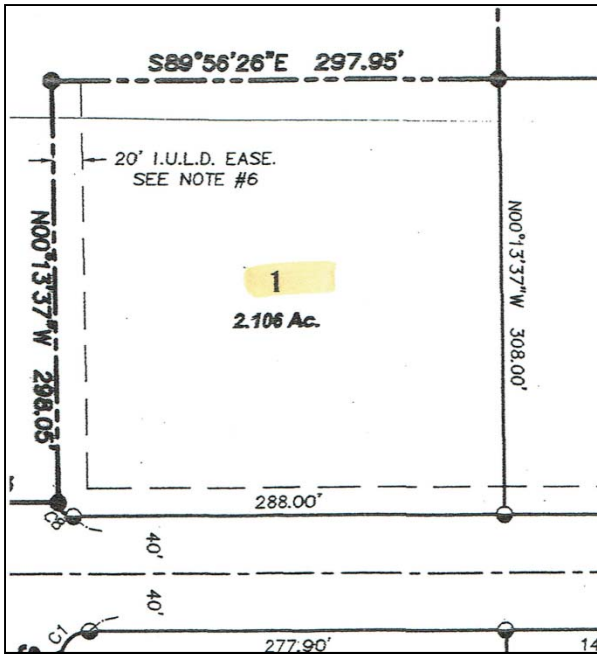
Bob Runyan: 208.863.8209 or br@rfrproperties.com

The information contained herein has been obtained by reliable sources, but is not guaranteed. This offering is subject to errors, omissions, prior sale, price change, and withdrawal.

Plat



Site Dimensions



Build-to-Suite



Flex building offering a combination of office, warehouse & yard space.

For more information contact: RFR Properties, LLC, PO Box 2579, Eagle, Idaho 83616 (208)863-8209 br@rfrproperties.com

The information contained herein has been obtained by reliable sources, but is not guaranteed. This offering is subject to errors, omissions, prior sale, price change, and withdrawal.