



\$849,900

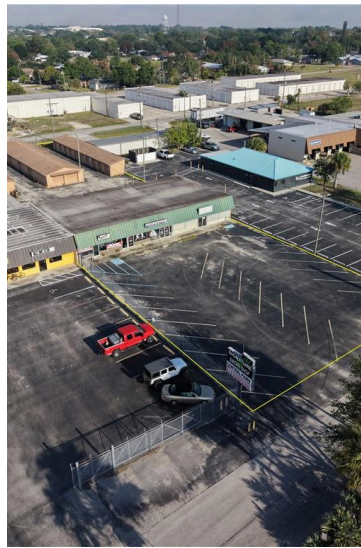
708 US 27 HIGHWAY S, LAKE PLACID, FL



Artist Rendering Potential



Artist Rendering Potential



Features

- Prime Retail
- 4650+-SF
- Storage Facility (30 Units)
- \$150/SF
- Highway Frontage High Exposure
- Artist Rendered Photos for Demonstration

**BEST OF ALL
UPSIDE POTENTIAL!**

This commercial property consists of 4 structures, containing the addresses: 708 - 714 US 27 S, Lake Placid. The front building facing US 27 is a 4650 SF Retail Building with 4 store fronts. This building can be used as 1 space or divided into 4 individual spaces. There are 3 buildings at the back with access from Wirick Rd - which consists of 30 Mini Storage Units. There is also an upside potential of adding more storage units or adding RV/Boat storage at the back of the building.

CONTACT US



Nancy Newman May,
Realtor
863-852-6687



Greg Karlson,
Broker/Owner
863-381-4932

**FOR MORE DETAILS
CONNECT WITH US!**