

19 FULTON

 OKADA & CO.





SEAPORT DISTRICT | **19**
FULTON | [VIEW MORE](#)

WHERE HERITAGE MEETS MODERN HUSTLE.

Nestled in the heart of Manhattan's historic Seaport District, 19 Fulton Street offers a rare opportunity to anchor your business in a neighborhood defined by its storied past and energetic future. This premier leasing opportunity features 10,581 SF of versatile space, blending authentic architectural charm with the sophisticated demands of today's commercial landscape.

| AVAILABLE SPACES

SUITE 308B	3,249	SF
SUITE 407	3,332	SF
SUITE 408	4,000	SF

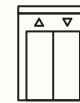
| HIGHLIGHTS



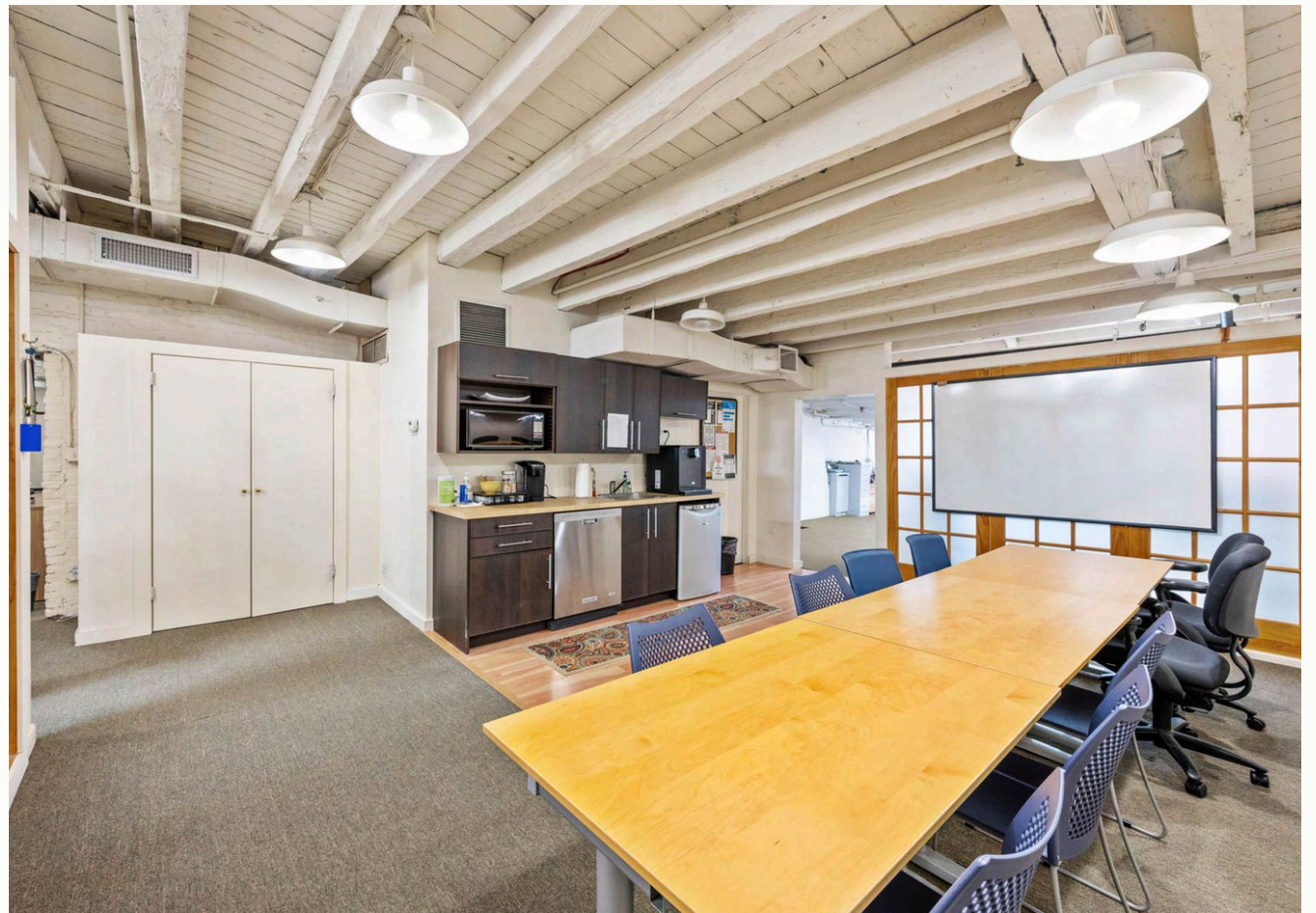
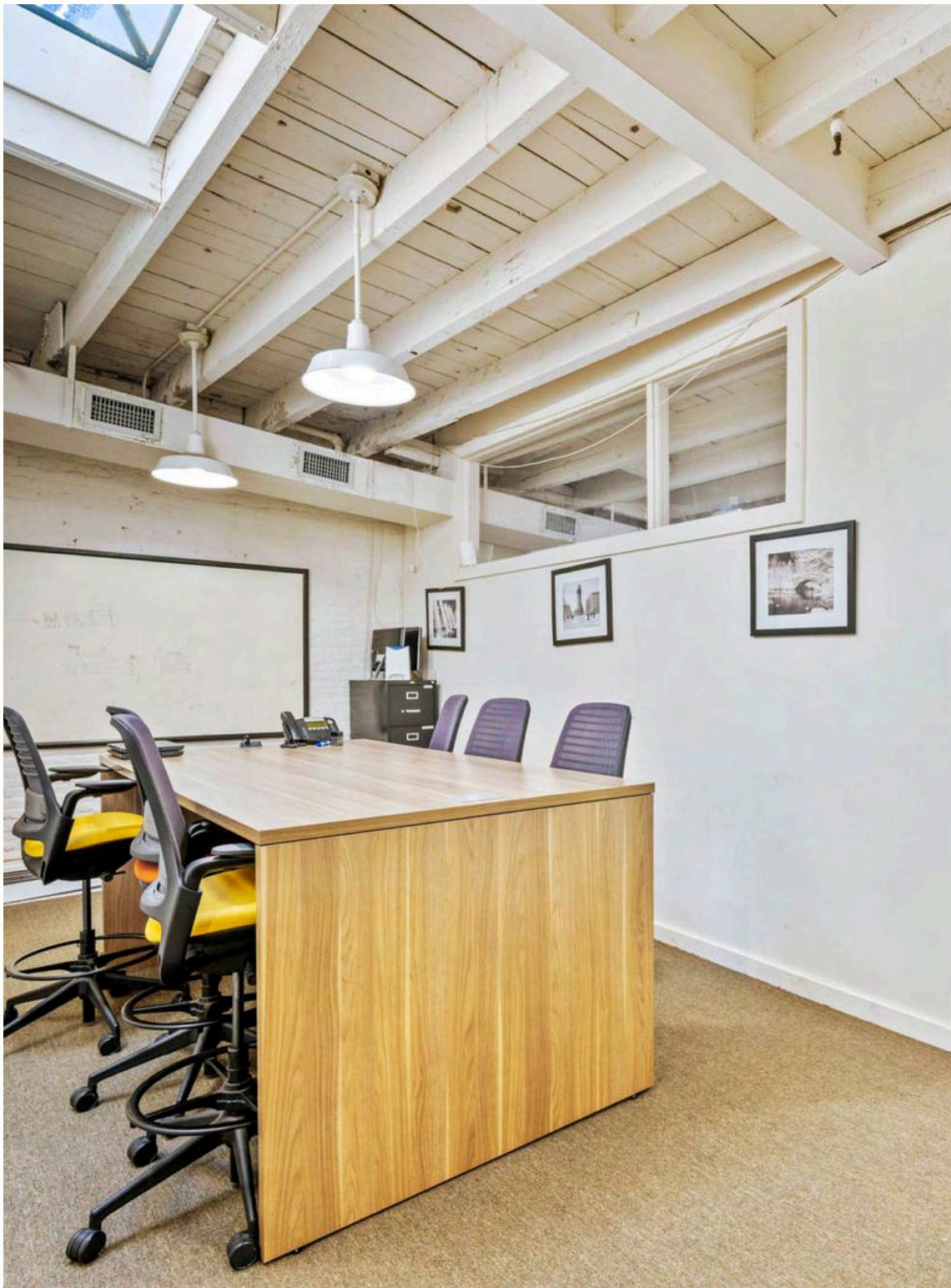
ACCESS



NATURAL LIGHT



ELEVATOR



OFFICE | SUITE 408

BUILDING LEGACIES THAT OUTLAST THE ERA.

Skylights flood this expansive open-concept office with natural light, featuring a convenient wet pantry and a versatile layout designed to foster high-capacity collaboration and a vibrant, productive work culture.

4,000 RSF | ASK: INQUIRE WITHIN

THE NEW FRONTIER OF BUSINESS.

OFFICE | SUITE 408

OFFICE | SUITE 408

SECURE THE FUTURE YOU DESERVE HERE.

The space can accommodate anyone looking to be successful in the industry. Its historic charm gives tenants the ability to express themselves in a distinctive, character-rich environment that blends timeless architecture with modern functionality.



LAW

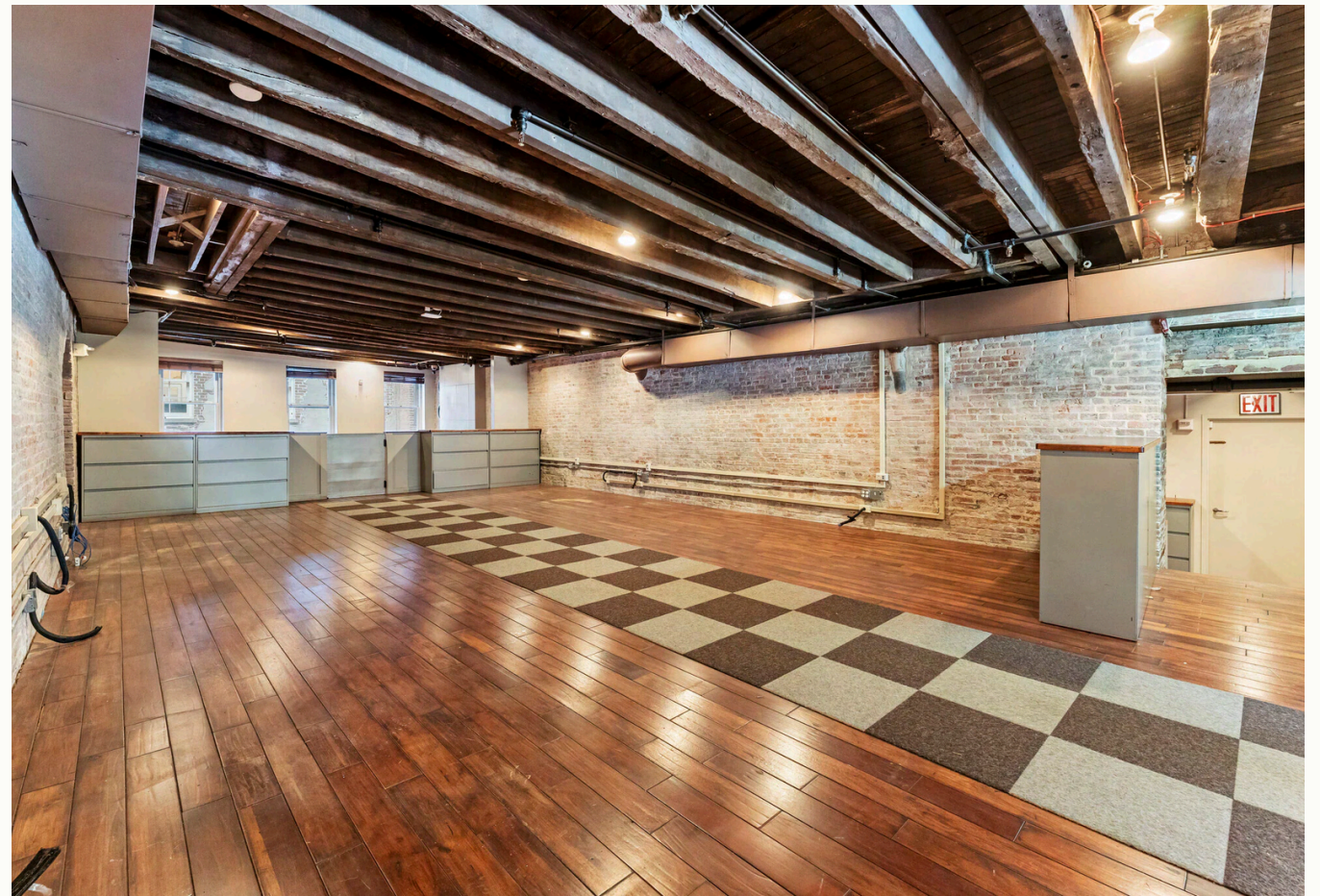
HEALTHCARE

FINANCE

FASHION

TECH

MARKETING



OFFICE | SUITE 308B

MODERN LOFT OFFICE WITH INDUSTRIAL CHARACTER

This industrial-style office features exposed brick walls, timber ceiling beams, and polished wood floors. Large windows provide natural light, while checkered carpet accents and recessed lighting create a professional, modern atmosphere.

3,249 RSF | ASK: INQUIRE WITHIN

TIMELESS WORK STYLE

SUITE 308B



SUITE 508B | PANTRY



SUITE 508B | HALLWAY

An empty office suite with a curved desk area and large windows. The room features a dark brown carpet, a white ceiling with recessed lighting, and a curved desk area with a light-colored finish. The windows offer a view of a cityscape with brick buildings and a bridge. The text is overlaid on the bottom left of the image.

OFFICE | SUITE 407

ENVISION YOUR POTENTIAL HERE.

3,332 RSF | ASK: INQUIRE WITHIN



THE NEIGHBORHOOD

Located in the historic South Street Seaport, 19 Fulton Street sits among cobblestone streets, waterfront piers, restaurants, and shops, blending preserved 18th-century architecture with modern retail, cultural venues, and vibrant public spaces in Lower Manhattan's Financial District.

19 FULTON



AVERY REAVILL
Associate Director
Avery@okadaco.com
M: (860) 841-1277
O: (212) 244-4240 Ext. 304



PARVEEN RAMPERSAUD
Associate
Parveen@okadaco.com
M: (347) 884-4586
O: (212) 244-4240 Ext. 327



135 W 36th Street, 14th Floor, New York, NY 10018