

TRI-STATE CREAMERY AT UPTOWN

Suite 211 Available for Lease



524 N. Main Avenue, Suite 211
Sioux Falls, SD 57104

FOR LEASE

\$14.00 / SF NNN
1,862 SF

SIZE

- 1,862 SF

PRICE

- \$14.00/SF NNN
- Estimated NNN: \$6.31/SF

LOCATION

- This restored historic Tri-State Creamery building is conveniently located in Uptown Sioux Falls at the intersection of 4th St. and Main Ave.

DESCRIPTION

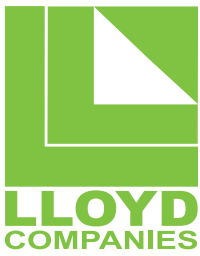
- Now Available
- Located across from the Larson Square Lofts & Phillips Avenue Lofts
- 187 lofts in the immediate area
- Space is available for your vision offering a link between Downtown Sioux Falls & Falls Park tourist attractions
- Floor plan includes four offices, work room, storage room, open work area, and reception area
- Owner is a South Dakota licensed Real Estate Broker
- Contact Broker to schedule showing

Find out more at Lloydcompanies.com

RAQUEL BLOUNT, SIOR

605 728-9092

raquel@lloydcompanies.com



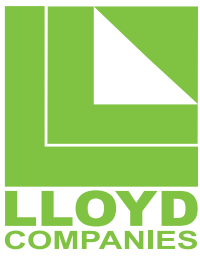
TRI-STATE CREAMERY AT UPTOWN

Suite 211 Available for Lease



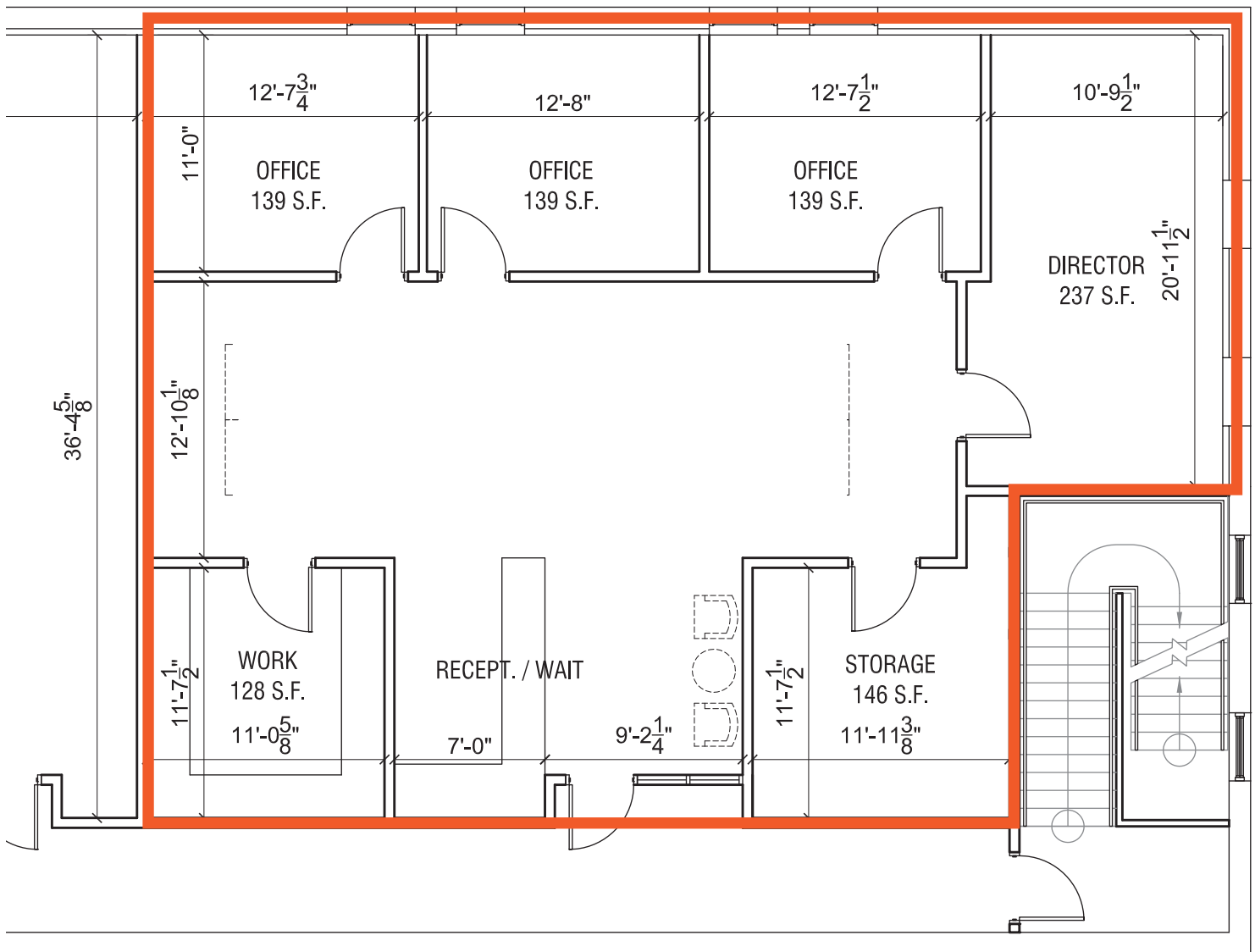
RAQUEL BLOUNT, SIOR
605-728-9092
raquel@lloydcompanies.com

INTERIOR PHOTOS



TRI-STATE CREAMERY AT UPTOWN

Suite 211 Available for Lease

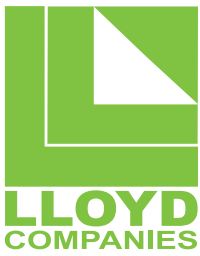


FLOOR PLAN

RAQUEL BLOUNT, SIOR

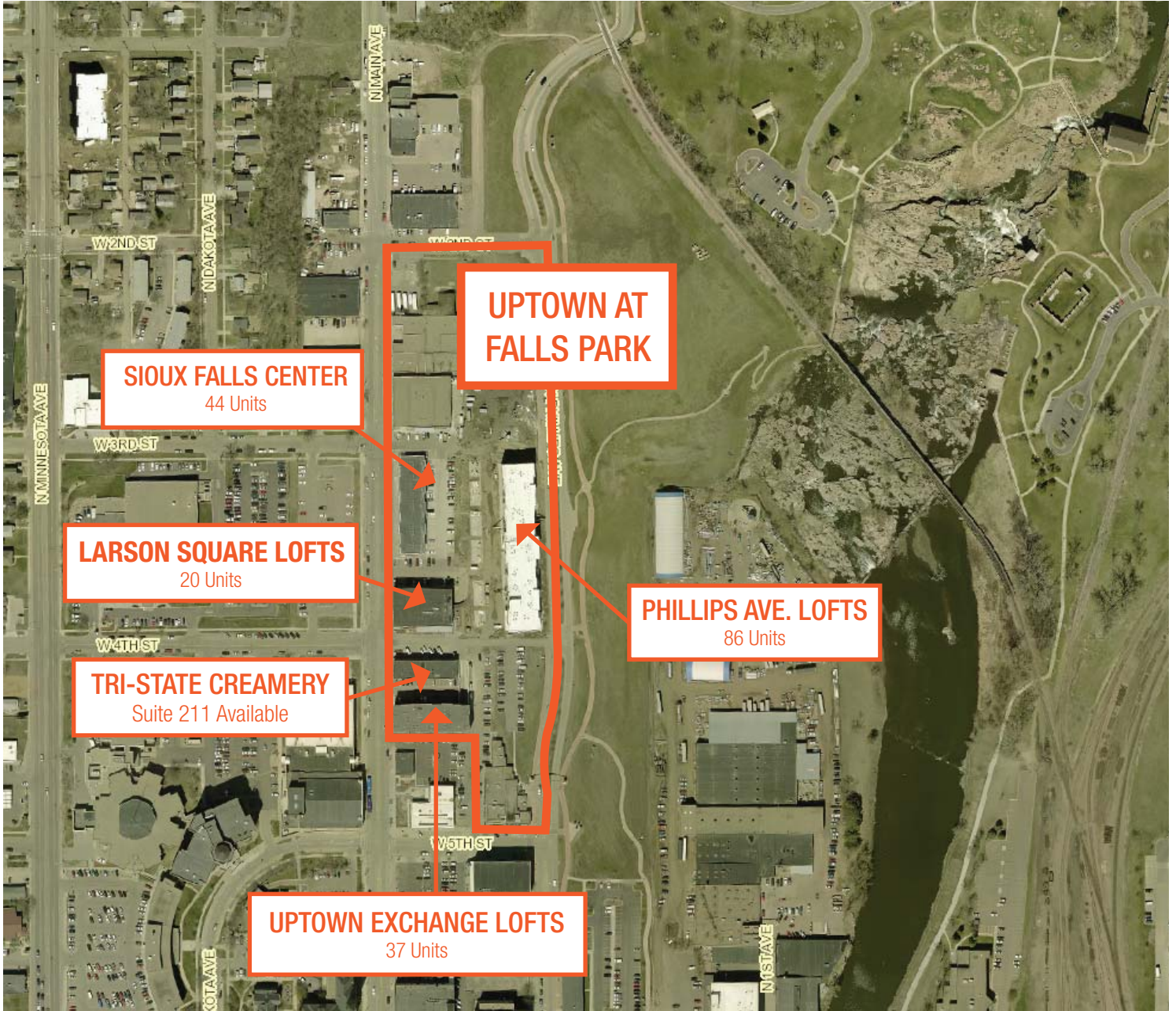
605 728-9092

raquel@lloydcompanies.com



TRI-STATE CREAMERY AT UPTOWN

Suite 211 Available for Lease



SITE MAP

RAQUEL BLOUNT, SIOR

605 728-9092

raquel@lloydcompanies.com